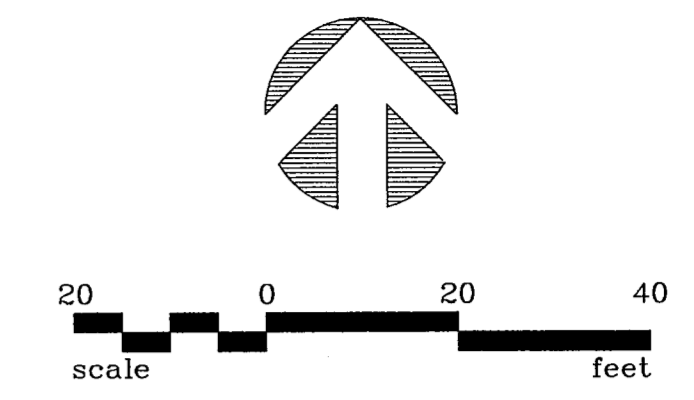
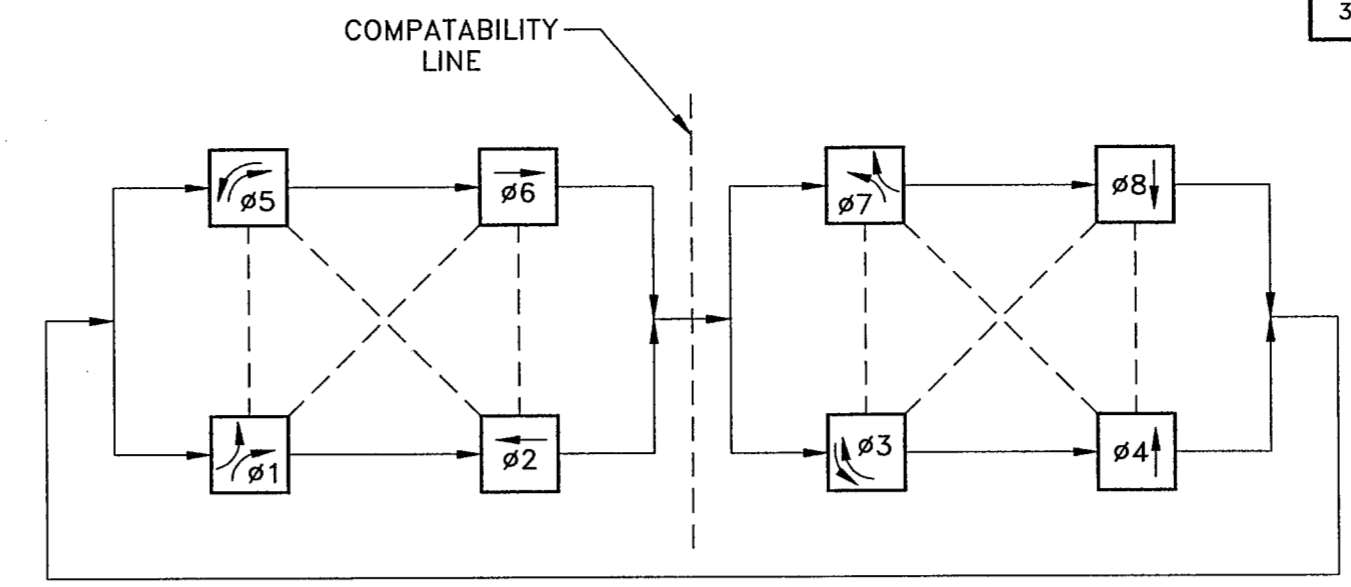


NO.	DATE	REVISION	APPROV.
1	2/06/02	PER ADDENDUM No.2	BRG
2			
3			

SIGNAL PLACEMENT STATION & OFFSET
T-1 PAV. STA. 10+77.73, 55.38' LT.
T-2 PAV. STA. 10+64.58, 42.23' RT.

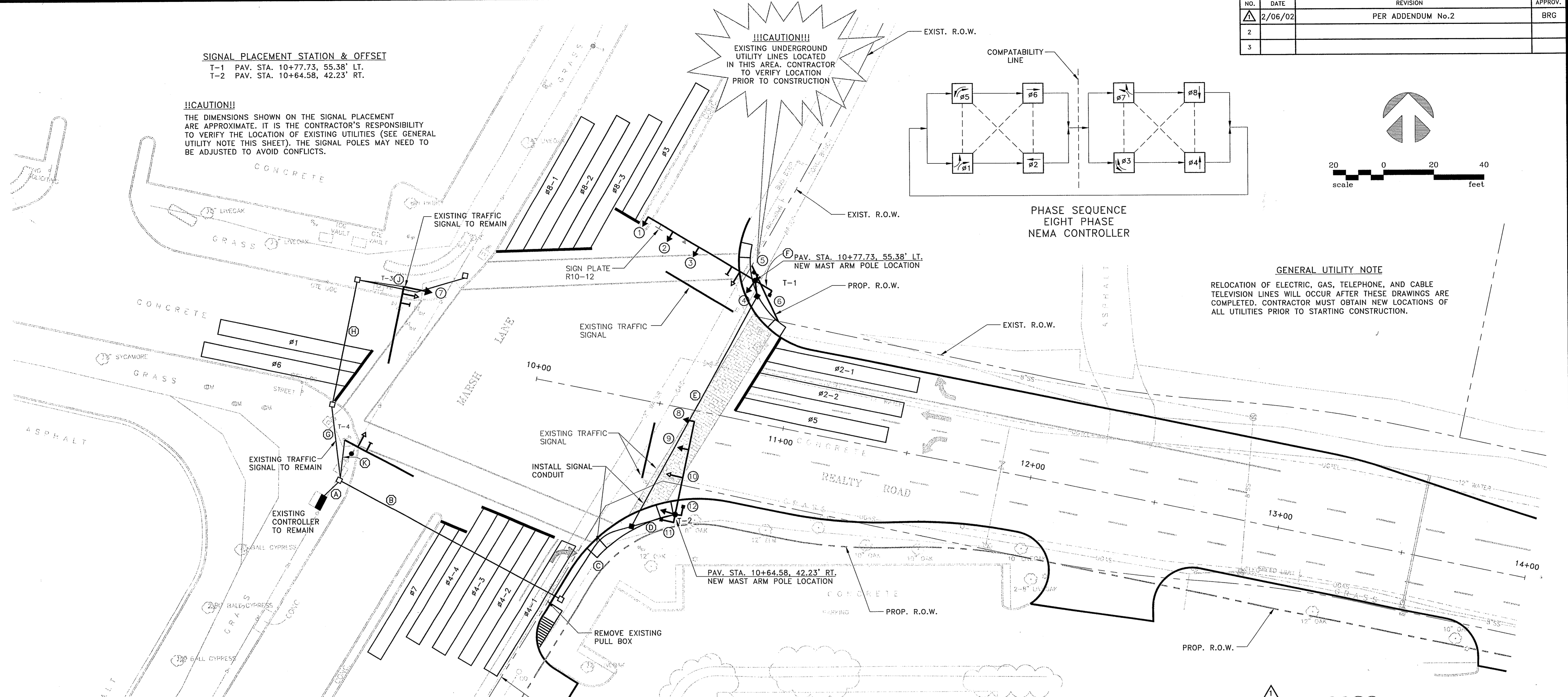
!!CAUTION!!
THE DIMENSIONS SHOWN ON THE SIGNAL PLACEMENT ARE APPROXIMATE. IT IS THE CONTRACTOR'S RESPONSIBILITY TO VERIFY THE LOCATION OF EXISTING UTILITIES (SEE GENERAL UTILITY NOTE THIS SHEET). THE SIGNAL POLES MAY NEED TO BE ADJUSTED TO AVOID CONFLICTS.

!!CAUTION!!
EXISTING UNDERGROUND UTILITY LINES LOCATED IN THIS AREA. CONTRACTOR TO VERIFY LOCATION PRIOR TO CONSTRUCTION



PHASE SEQUENCE
EIGHT PHASE
NEMA CONTROLLER

GENERAL UTILITY NOTE
RELOCATION OF ELECTRIC, GAS, TELEPHONE, AND CABLE TELEVISION LINES WILL OCCUR AFTER THESE DRAWINGS ARE COMPLETED. CONTRACTOR MUST OBTAIN NEW LOCATIONS OF ALL UTILITIES PRIOR TO STARTING CONSTRUCTION.



GENERAL TRAFFIC NOTE:

- ALL WORK SHALL BE PERFORMED IN ACCORDANCE WITH TOWN OF ADDISON AND TXDOT STANDARDS AND SPECIFICATIONS. IN THE EVENT OF A CONFLICT, TOWN OF ADDISON STANDARDS SHALL GOVERN.
- ALL TRAFFIC SIGNAL WORK SHALL BE BID UNDER THE LUMP SUM BID ITEMS.

NOTES:

- SIGNAL HEAD 6, 7 AND 8 SHALL BE ORDERED BUT NOT INSTALLED IN THIS CONTRACT. DELIVER TO TOWN OF ADDISON STORAGE YARD.
- ALL PEDESTRIAN SIGNAL HEADS SHALL BE "COUNTDOWN" TYPE.
- TRAFFIC SIGNAL CONTROLLER SHALL BE WIRED FOR RAILROAD PRECEDENCE.
- ALL TRAFFIC SIGNAL AND PEDESTRIAN HEADS SHALL BE LED.
- CONTRACTOR SHALL INSTALL 2" CONDUIT (PVC) FROM CLOSEST PULL BOX TO CONTROLLER FOR TWO TELEPHONE LINES.
- NO ILSN CLAMPS SHALL BE ALLOWED. PELCO MOUNTS SHALL BE USED.

LEGEND

FIRE HYDRANT	⊙	TRAFFIC SIGNAL ON ARM W/POLE	●
POWER POLE	○	COMB. ST. LIGHT/SIGNAL POLE	●
LIGHT STANDARD WITH PHOTOCELL	⊘	SIGNAL HEAD IDENTIFIER	①
RIGHT-OF-WAY	---	SIGNAL CONDUIT	---
VIDEO DETECTION CAMERA	→	CONDUIT IDENTIFIER	⊙
ZONE DETECTOR (VIDEO)	▭	INSTALL PULL BOX TYPE A	■
OPTICOM DETECTOR	≡	INSTALL PULL BOX TYPE C	■
INSTALL SIGN PLATE	— OR —	PEDESTRIAN SIGNAL WITH BUTTONS, AND R10-4b SIGNS	⊥
PROPOSED SIGNAL POLE IDENTIFIER	T-3	PEDESTAL POLE W/SIGNALS WITH BUTTONS, AND R10-4b SIGNS	⊥
SIGN PLATE AND POLE TO BE INSTALLED	⊔	INSTALL CONTROLLER FOUNDATION/CABINET	⊔
		INTERNALLY ILLUMINATED STREET NAME SIGN	⊥
		EXISTING PULL BOX	□

BUILT AS PER SPECIFICATIONS AND PLANS BY DURABLE SPECIALTIES INC. PROJECT COORDINATOR: [Signature]



THE SEAL APPEARING ON THIS DOCUMENT WAS AUTHORIZED BY: WILLIAM J. HATCHELL ON 2/15/12. ALTERATION OF A SEALED DOCUMENT WITHOUT PROPER NOTIFICATION TO THE RESPONSIBLE ENGINEER IS AN OFFENSE UNDER THE TEXAS ENGINEERING PRACTICE ACT.

DATE: DECEMBER, 2001	SCALE: 1"=20'	JOB NO.: 00-249
DRAWN: GBW	DESIGN: JFW	REVIEWED: [Signature]
		DWG: TRFLITE0120.DWG

**ARAPAHO ROAD PHASE II
ARAPAHO AT MARSH LANE
TRAFFIC SIGNAL PLAN**

TOWN OF ADDISON

Grantham, Burge & Waldbauer
Engineers, Inc.
1919 S. SHILOH ROAD, SUITE 530, L.B. 27 GARLAND, TEXAS 75042
(972) 840-1916 (TEL)
(972) 840-2156 (FAX)

SHT. TS-1 OF TS-21