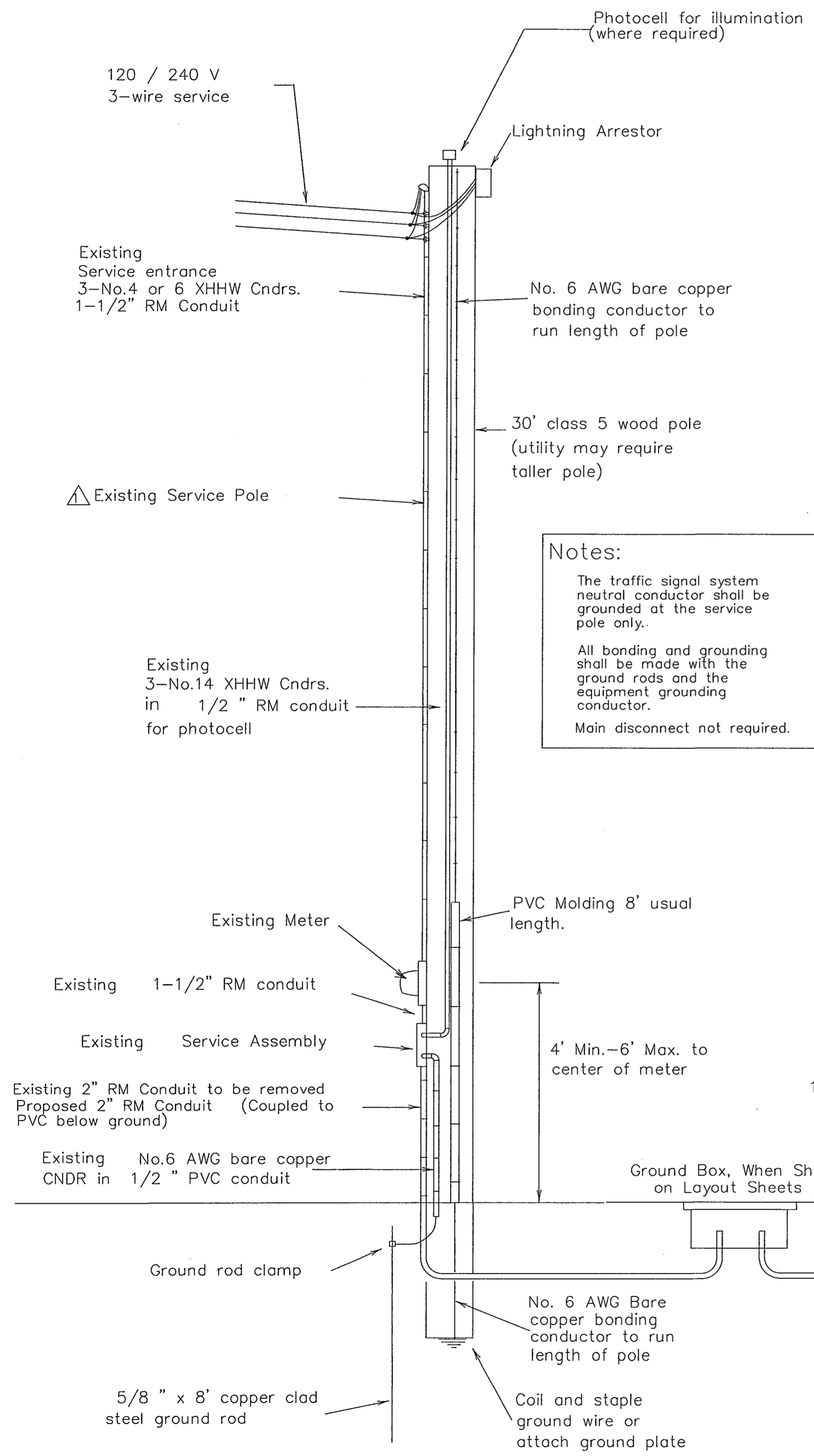


NO.	DATE	REVISION	APPROV.
1			
2			
3			

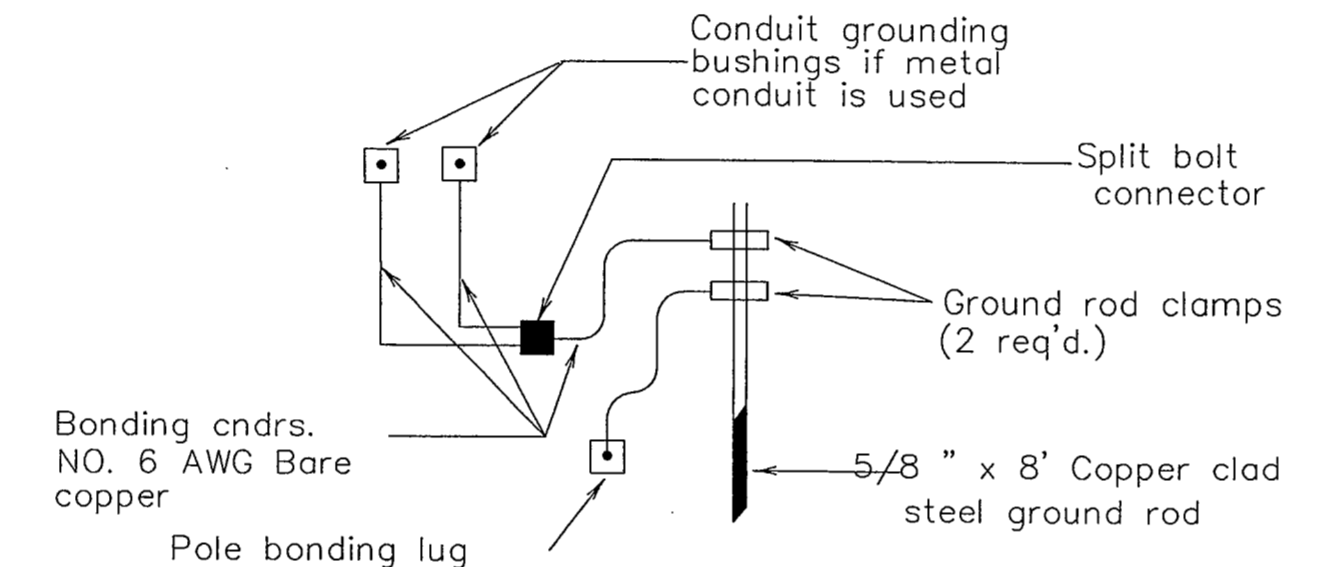
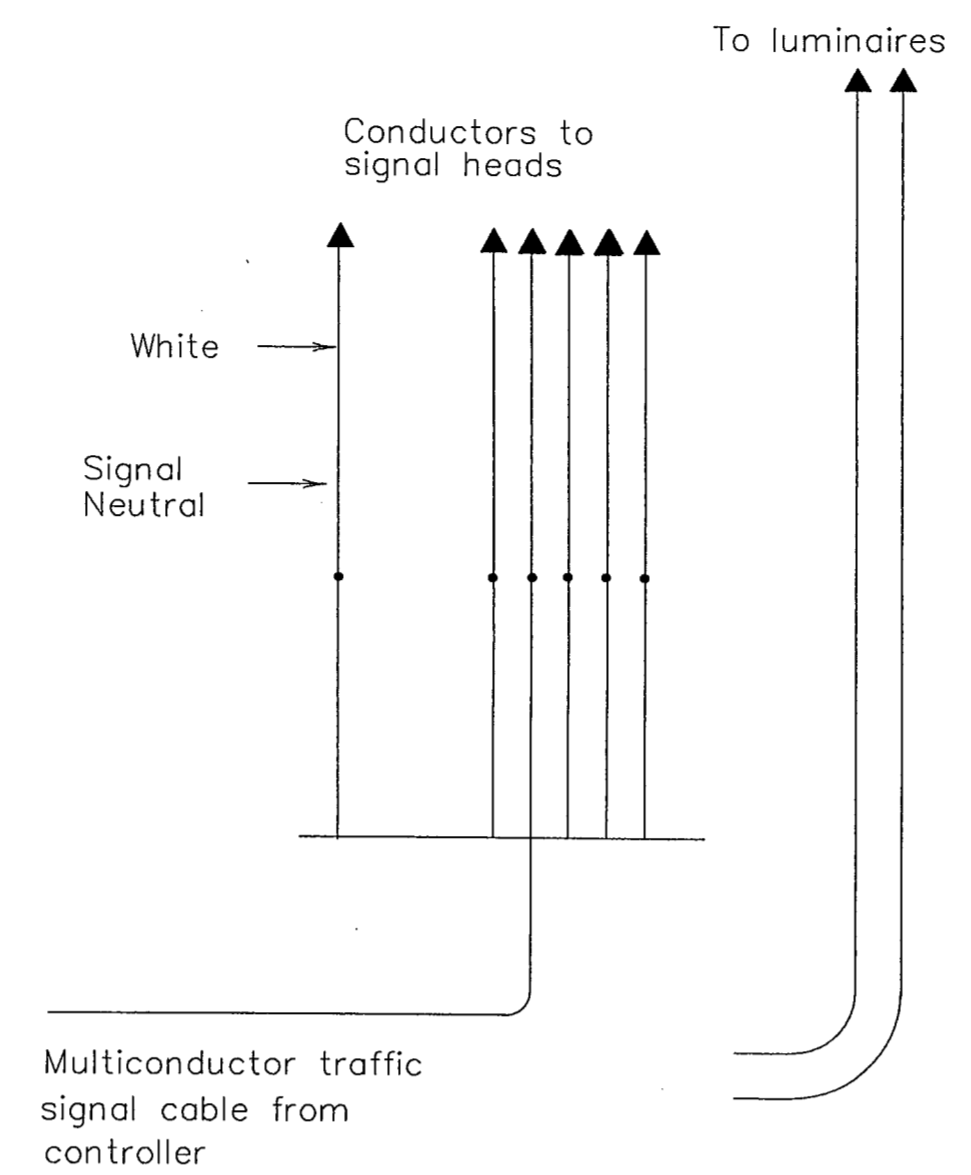


Notes:

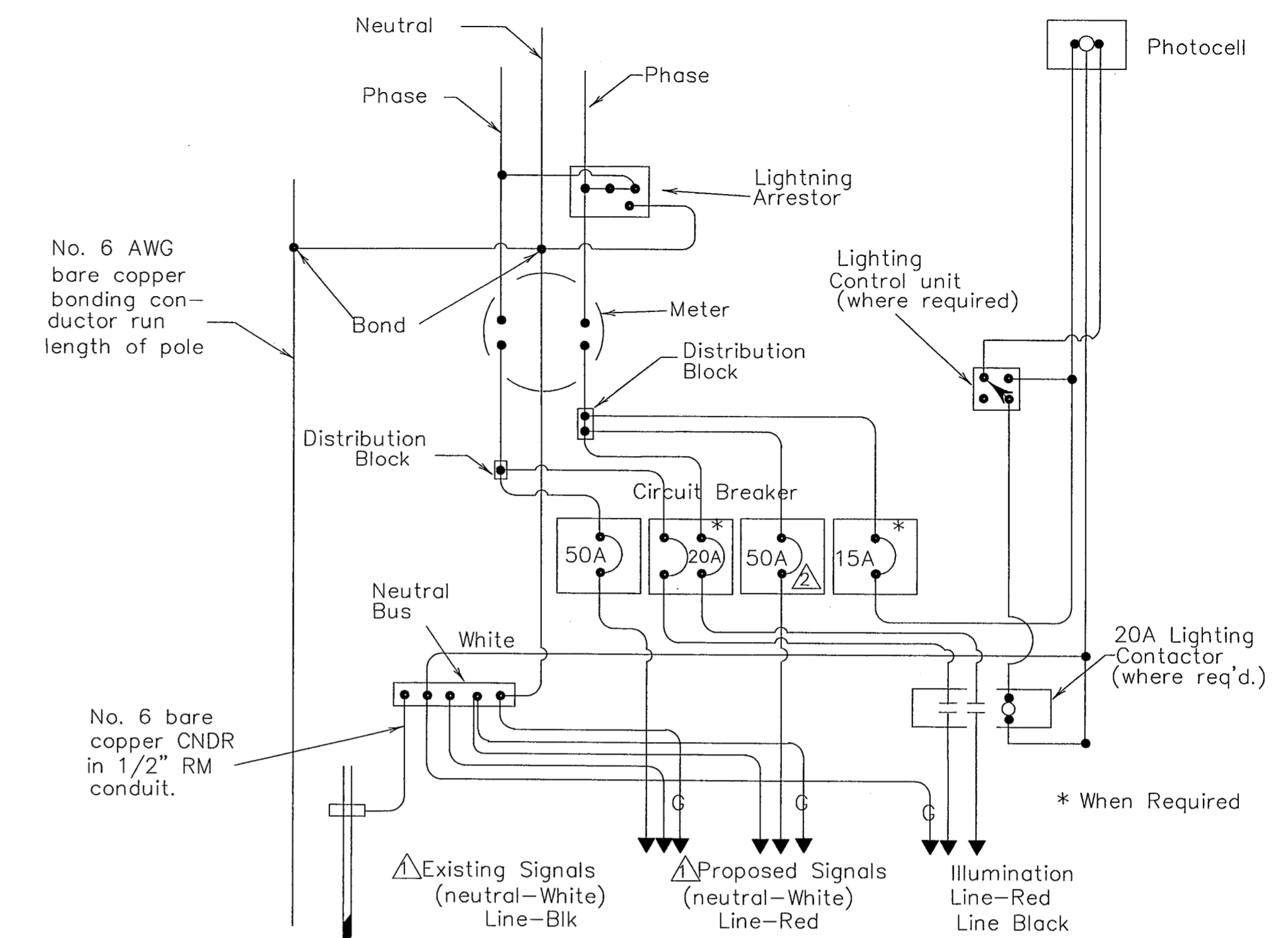
The traffic signal system neutral conductor shall be grounded at the service pole only.

All bonding and grounding shall be made with the ground rods and the equipment grounding conductor.

Main disconnect not required.

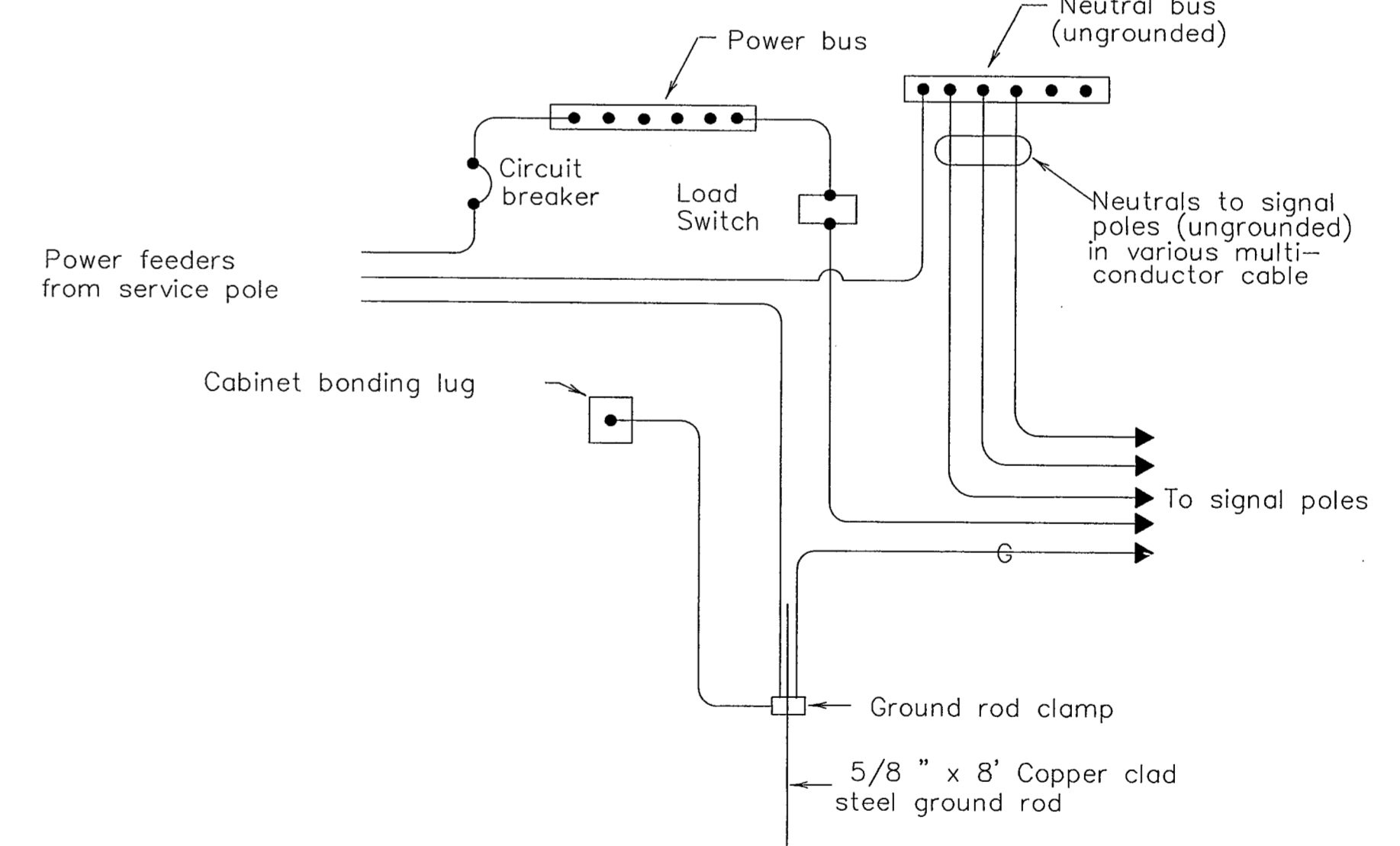


CONNECTION AT STEEL POLE BASE

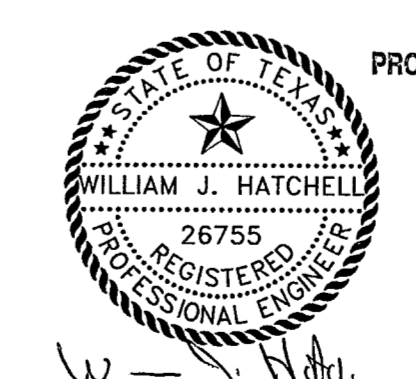


**CONNECTIONS AT SERVICE SCHEMATIC TY SE
120/240 VOLT - THREE WIRE SERVICE**

All circuit breakers are existing. The contractor shall install a new 50 AMP breaker for the new controller and remove the existing 50 AMP breaker for the existing controller after signals are operational.



CONNECTIONS AT SIGNAL CONTROLLERS



THE SEAL APPEARING ON THIS DOCUMENT WAS AUTHORIZED BY: WILLIAM J. HATCHELL ON 2/18/01

ALTERATION OF A SEALED DOCUMENT WITHOUT PROPER NOTIFICATION TO THE RESPONSIBLE ENGINEER IS AN OFFENSE UNDER THE TEXAS ENGINEERING PRACTICE ACT.

DATE: DECEMBER, 2001	SCALE: NOT TO SCALE	JOB NO.: 00-249	79
DRAWN: GBW	DESIGN: WJH	REVIEWED:	DWG: 249DETAILS-TRAF

**ARAPAHO ROAD PHASE II
SERVICE POLE
DETAILS**

TOWN OF ADDISON

**Grantham, Burge & Waldbauer
Engineers, Inc.**

1919 S. SHILOH ROAD, SUITE 530, L.B. 27
GARLAND, TEXAS 75042

(972) 840-1916 (TELE)
(972) 840-2156 (FAX)

SHT. TS-19
OF TS-21

THIS DETAIL SHEET WAS OBTAINED FROM TXDOT