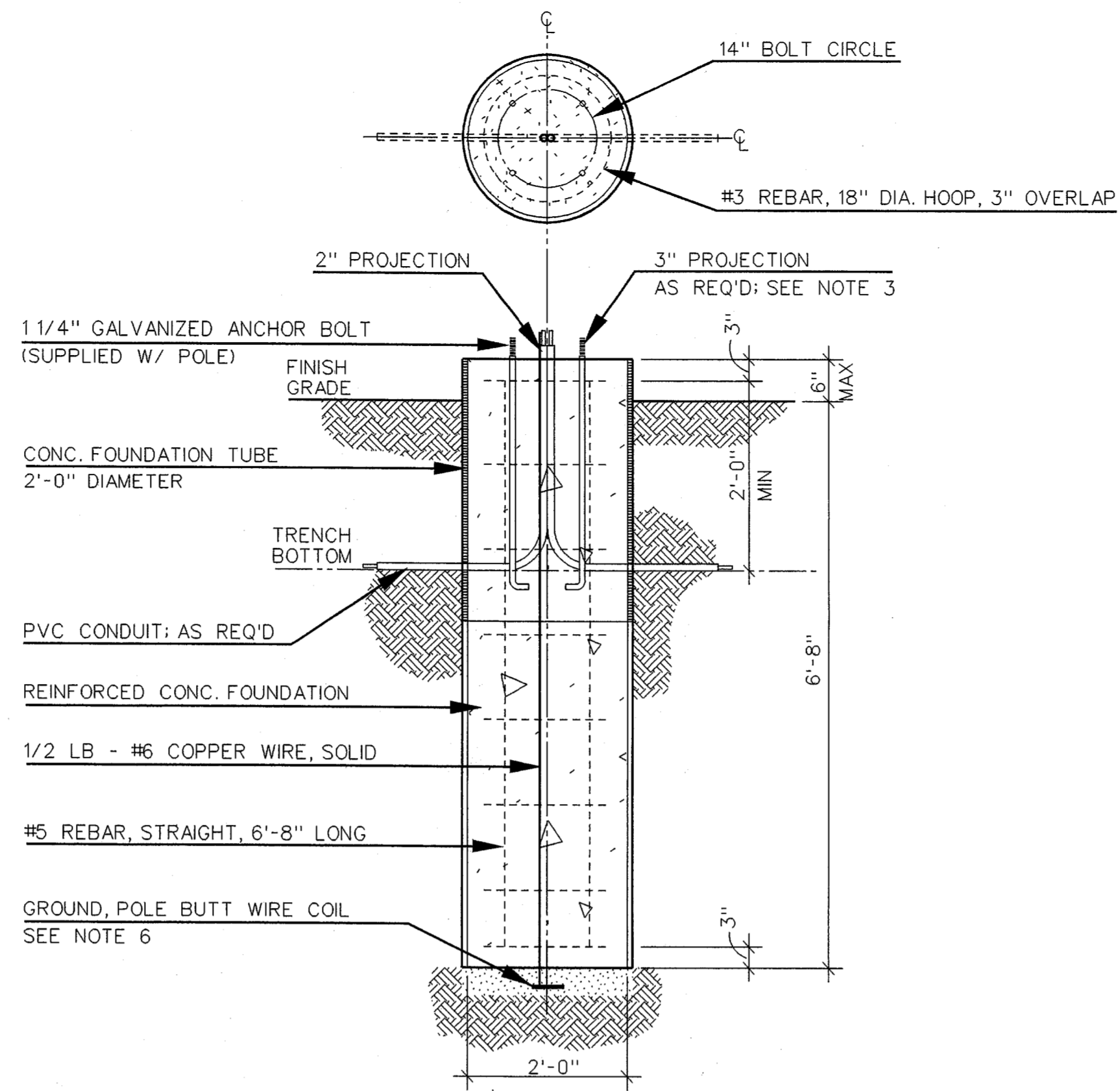
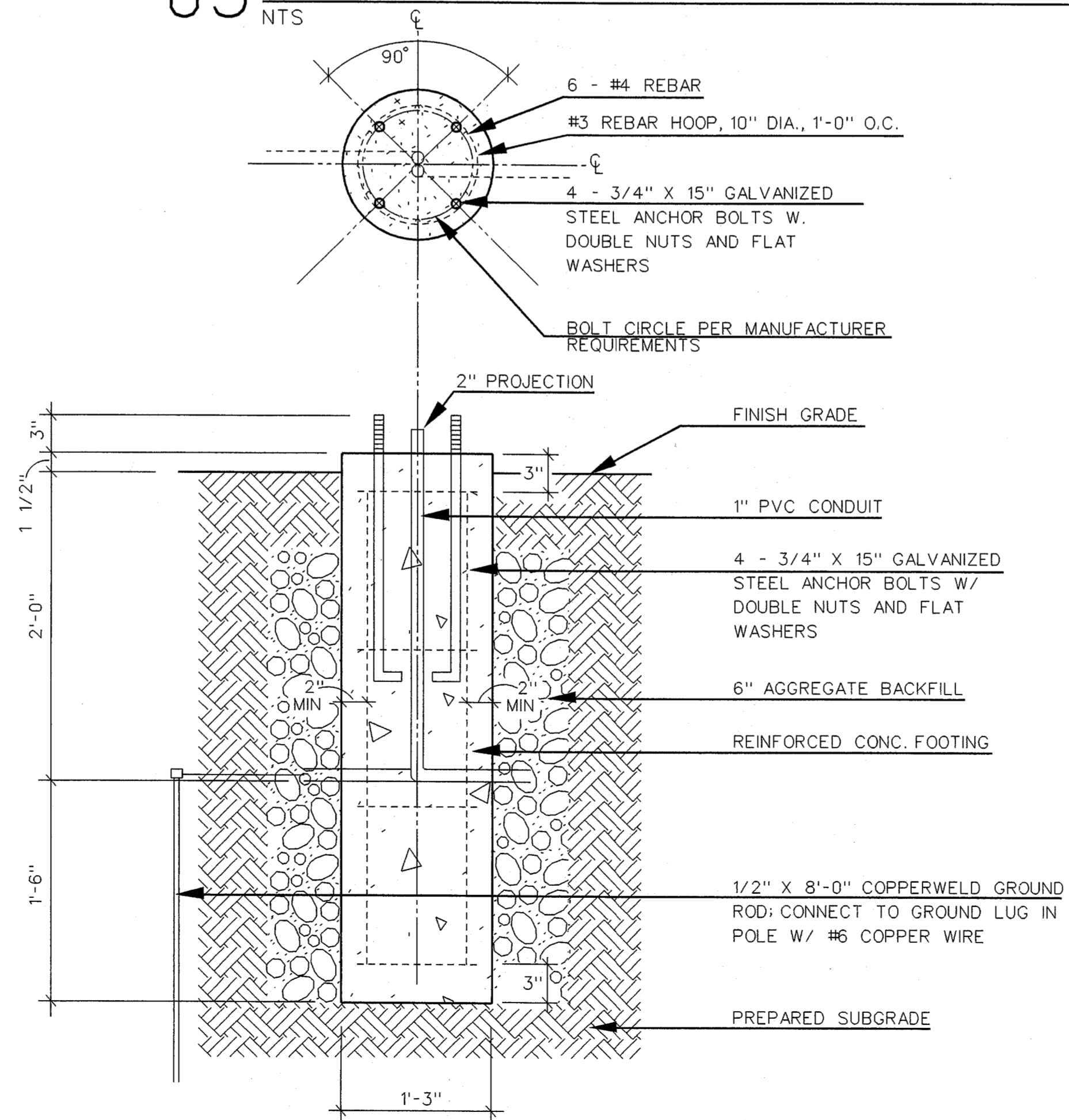


NOTES:

1. CONCRETE TO BE MINIMUM 3000 PSI AT 28 DAYS. MAXIMUM AGGREGATE 3/4" TOP OF FOUNDATION TO BE TROWELED TO A FLAT AND LEVEL SURFACE. AVOID EXCESSIVE TROWELING. CONCRETE TO SET A MINIMUM OF 72 HOURS BEFORE POLE INSTALLATION.
2. REBAR HOOPS ARE TIED BEGINNING 3" BELOW TOP OF CONCRETE FORM AND ARE REPEATED AT APPROX. 1' INTERVALS TO BOTTOM OF FOUNDATION.
3. ANCHOR BOLTS TO BE SUPPLIED WITH POLE. USE TEMPLATE FURNISHED BY POLE MANUFACTURER FOR ALIGNING ANCHOR BOLTS. PROJECTION OF 3" ON 25' & 30' SQUARE AND 3 1/2" ON 40' SQUARE AND 37' ROUND POLES.
4. CONCRETE FORM OF SONOTUBE TO EXTEND TO BOTTOM OF TRENCH OR AS NEEDED.
5. PROVIDE 2'-0" PITTAIL FOR CONNECTION OF GROUND WIRE TO POLE.
6. A MINIMUM OF 12" OF BARE #6 SD CU WIRE TO BE PLACED IN BOTTOM OF HOLE AND COVERED W/ 2" OF DIRT.
7. IF SOIL HAS BEEN DISTURBED, EXTEND FOUNDATION BY DEPTH OF DISTURBED SOIL.
8. TXU WILL REMOVE THE EXISTING COBRA HEAD LIGHTS WHEN THE NEW LIGHTS ARE INSTALLED.



05 STREET LIGHT FOUNDATION DETAIL

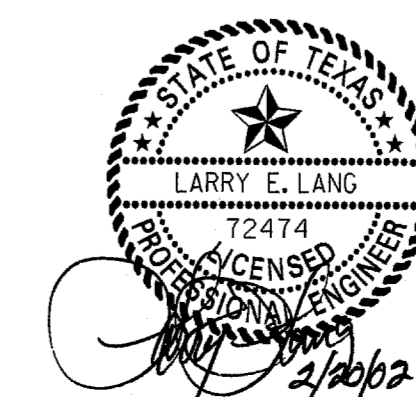


04 PEDESTRIAN LIGHT FOUNDATION DETAIL

19-FEB-2002

J:\25768\DWGS\L-300.dgn

25768



NO.		DATE		REVISION		APPROV.	
98							
<b>HNTB</b> ARCHITECTS ENGINEERS PLANNERS <i>The HNTB Companies</i>							
<b>ARAPAHO ROAD - PHASE II</b>							
MARSH LANE TO SURVEYOR BOULEVARD							
SITE WORK DETAILS							
TOWN OF ADDISON, TEXAS							
Design	JGS	Drawn	TGM	DATE	SCALE	PROJECT NO.	SHEET NO.
Check	LEL	Check	JGS	OCT 11		25768	IL-7