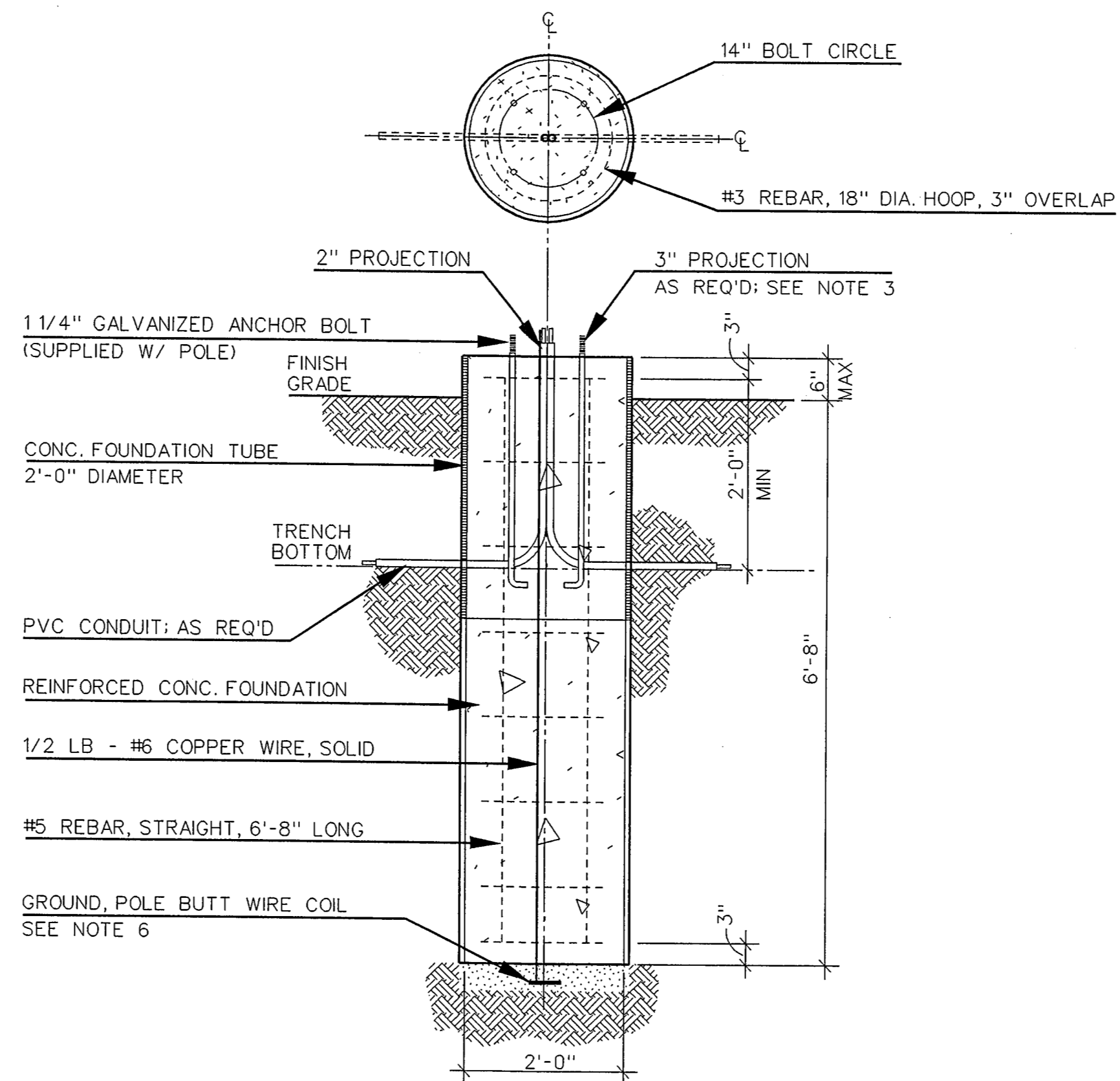
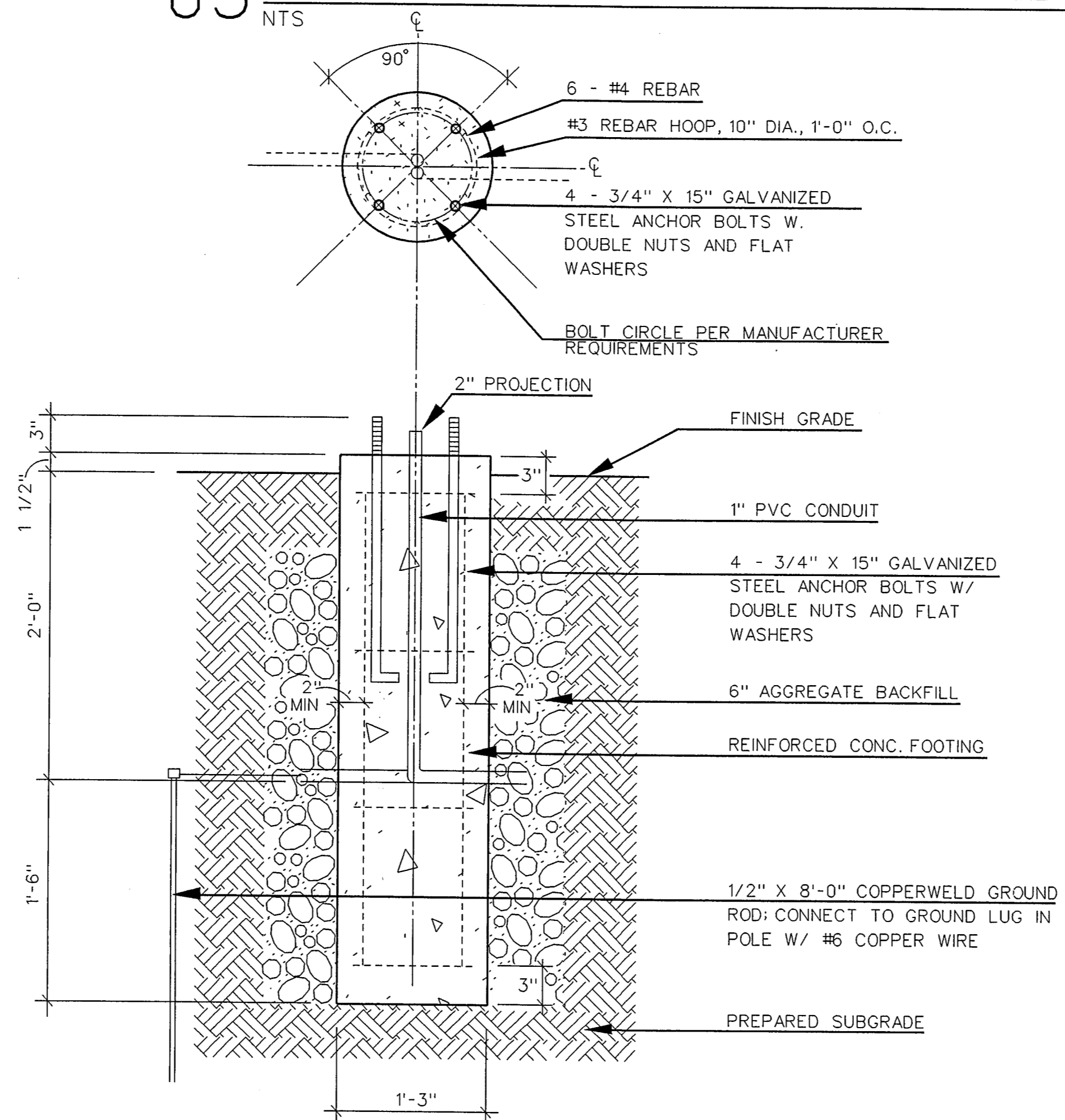


NOTES:

1. CONCRETE TO BE MINIMUM 3000 PSI AT 28 DAYS. MAXIMUM AGGREGATE 3/4". TOP OF FOUNDATION TO BE TROWELED TO A FLAT AND LEVEL SURFACE. AVOID EXCESSIVE TROWELING. CONCRETE TO SET A MINIMUM OF 72 HOURS BEFORE POLE INSTALLATION.
2. REBAR HOOPS ARE TIED BEGINNING 3" BELOW TOP OF CONCRETE FORM AND ARE REPEATED AT APPROX. 1' INTERVALS TO BOTTOM OF FOUNDATION.
3. ANCHOR BOLTS TO BE SUPPLIED WITH POLE. USE TEMPLATE FURNISHED BY POLE MANUFACTURER FOR ALIGNING ANCHOR BOLTS. PROJECTION OF 3" ON 25' & 30' SQUARE AND 3 1/2" ON 40' SQUARE AND 37' ROUND POLES.
4. CONCRETE FORM OF SONOTUBE TO EXTEND TO BOTTOM OF TRENCH OR AS NEEDED.
5. PROVIDE 2'-0" PIGTAIL FOR CONNECTION OF GROUND WIRE TO POLE.
6. A MINIMUM OF 12" OF BARE #6 SD CU WIRE TO BE PLACED IN BOTTOM OF HOLE AND COVERED W/ 2" OF DIRT.
7. IF SOIL HAS BEEN DISTURBED, EXTEND FOUNDATION BY DEPTH OF DISTURBED SOIL.
8. TXU WILL REMOVE THE EXISTING COBRA HEAD LIGHTS WHEN THE NEW LIGHTS ARE INSTALLED.

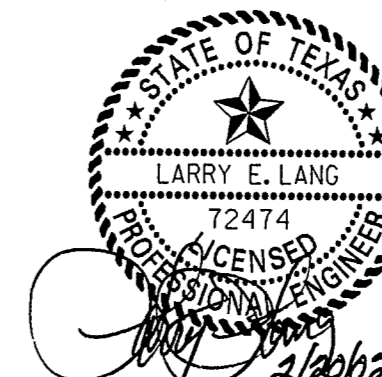


05 STREET LIGHT FOUNDATION DETAIL
NTS



04 PEDESTRIAN LIGHT FOUNDATION DETAIL
NTS

BUILT AS PER SPECIFICATIONS AND PLANS BY DURABLE SPECIALTIES INC. PROJECT COORDINATOR *[Signature]*



NO.	DATE	REVISION	APPROV.
HNTB ARCHITECTS ENGINEERS PLANNERS <small>The HNTB Companies</small>			
ARAPAHO ROAD - PHASE II			
MARSH LANE TO SURVEYOR BOULEVARD			
SITE WORK DETAILS			
TOWN OF ADDISON, TEXAS			
Design	JGS	Drawn	TGM
Check	LEL	Check	JGS
DATE	OCT 11	SCALE	
PROJECT NO.	25768	SHEET NO.	IL-7

98