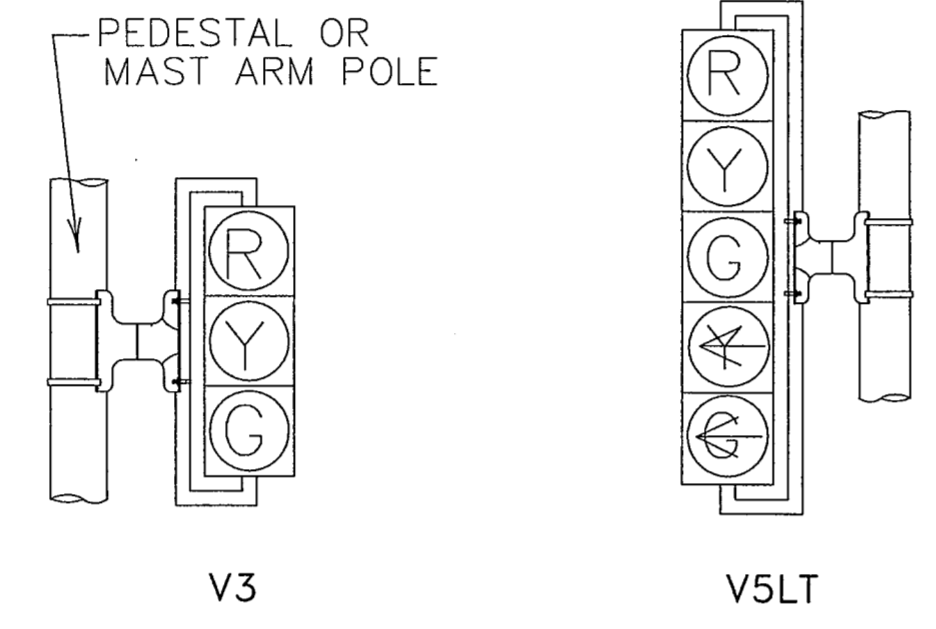
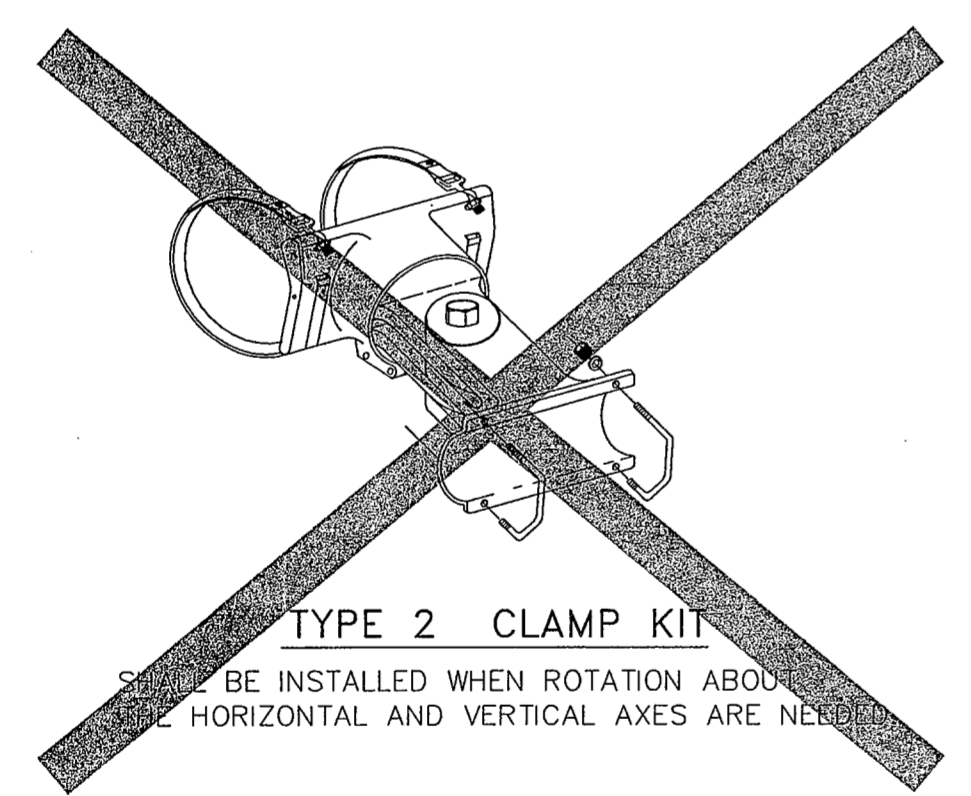
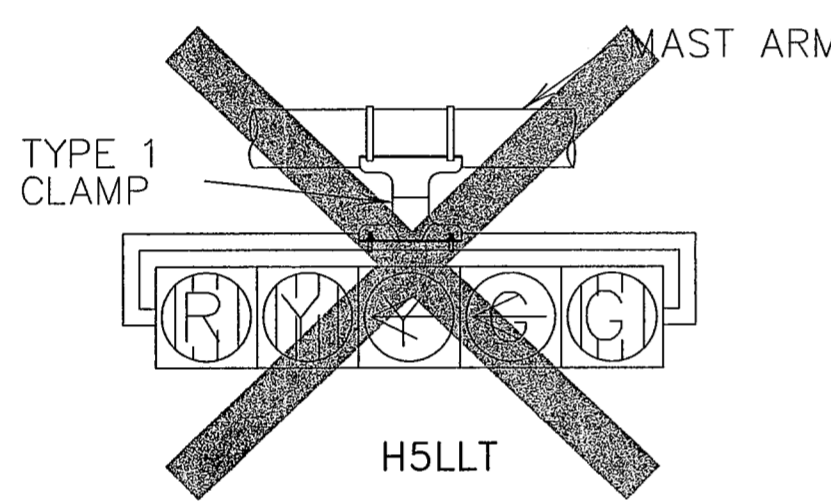
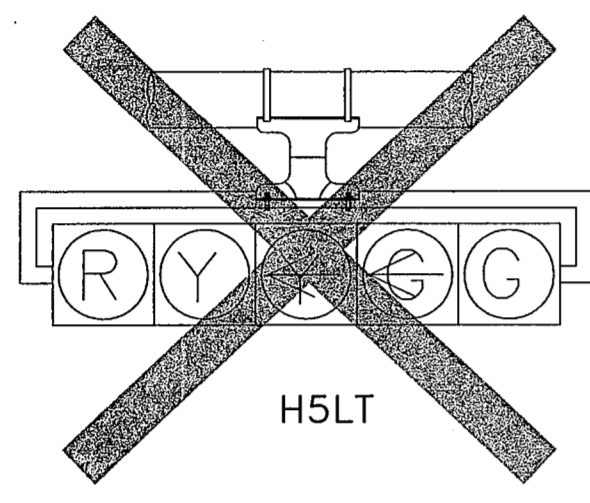
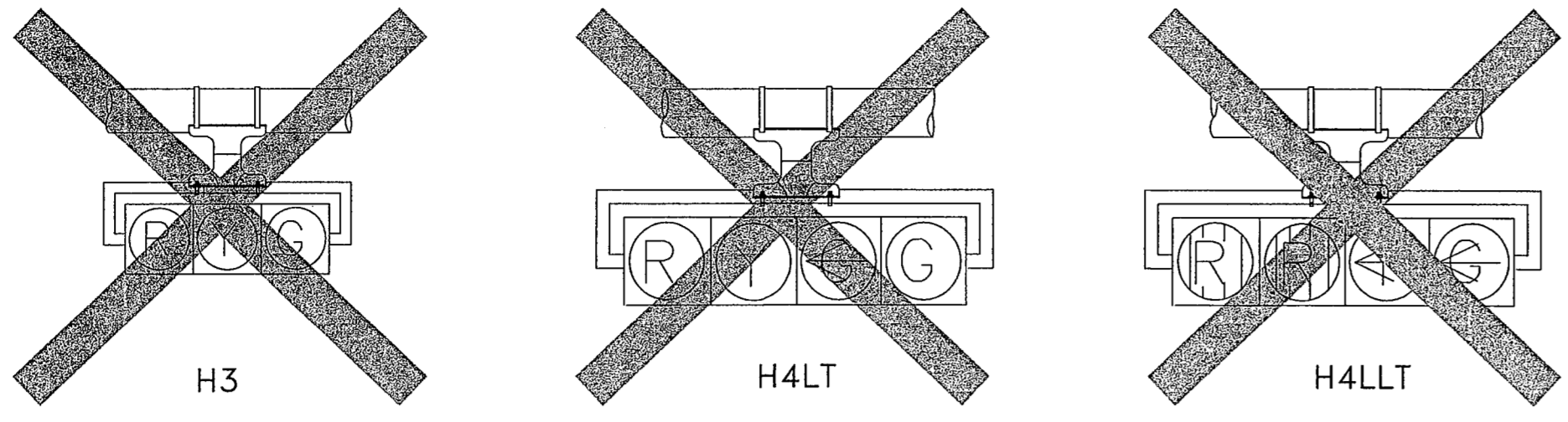
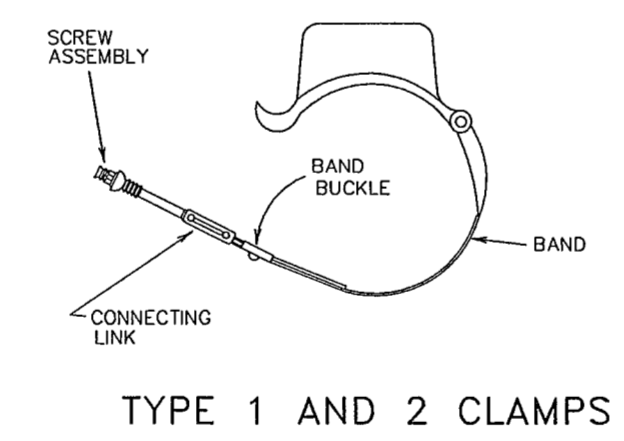


NO.	DATE	REVISION	APPROV.
1			
2			
3			

NOTE:
ALL SIGNAL HEADS TO BE MOUNTED VERTICALLY ON MAST ARM PER MANUFACTURERS SPECIFICATIONS.

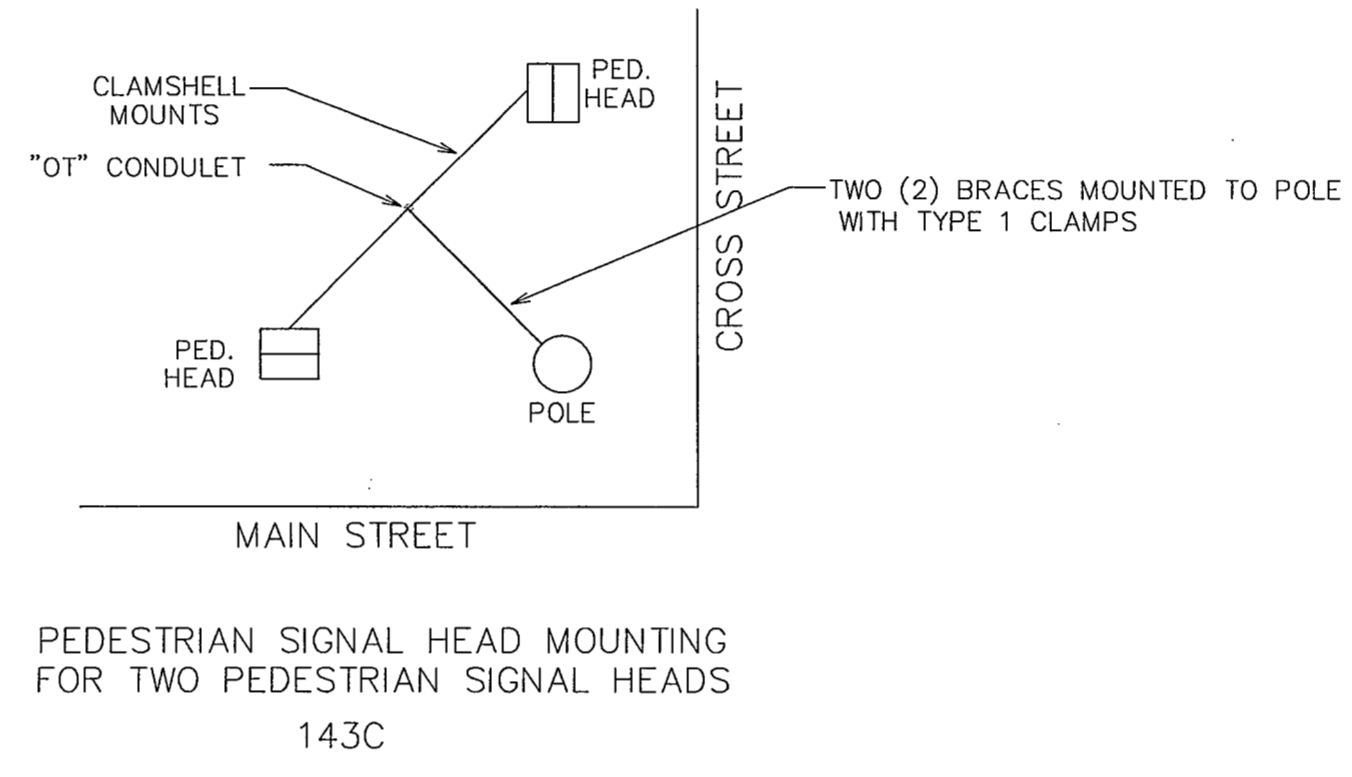
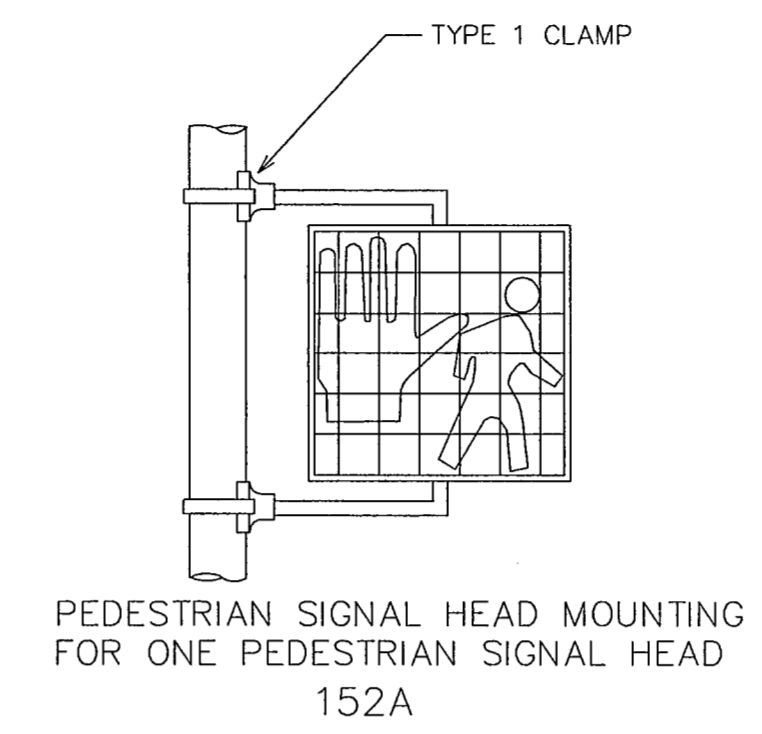


NOTE:
VERTICAL LOUVERS SHALL BE INSTALLED ON HORIZONTAL MOUNTED SIGNALS, HORIZONTAL LOUVERS SHALL BE INSTALLED ON VERTICAL MOUNTED SIGNAL WHEN NEEDED.

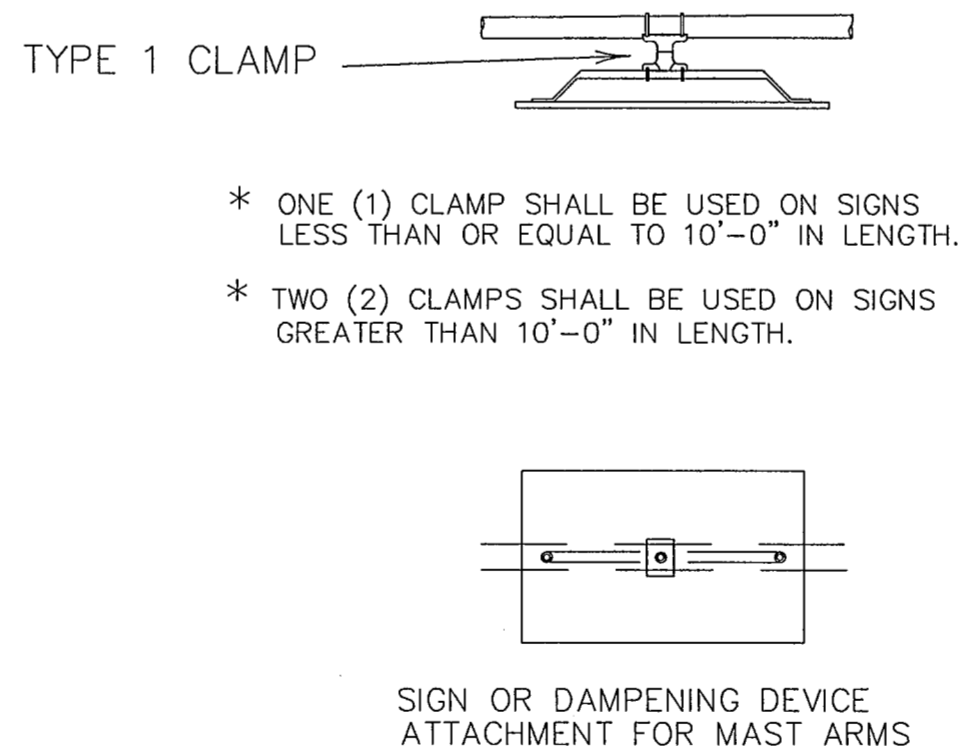
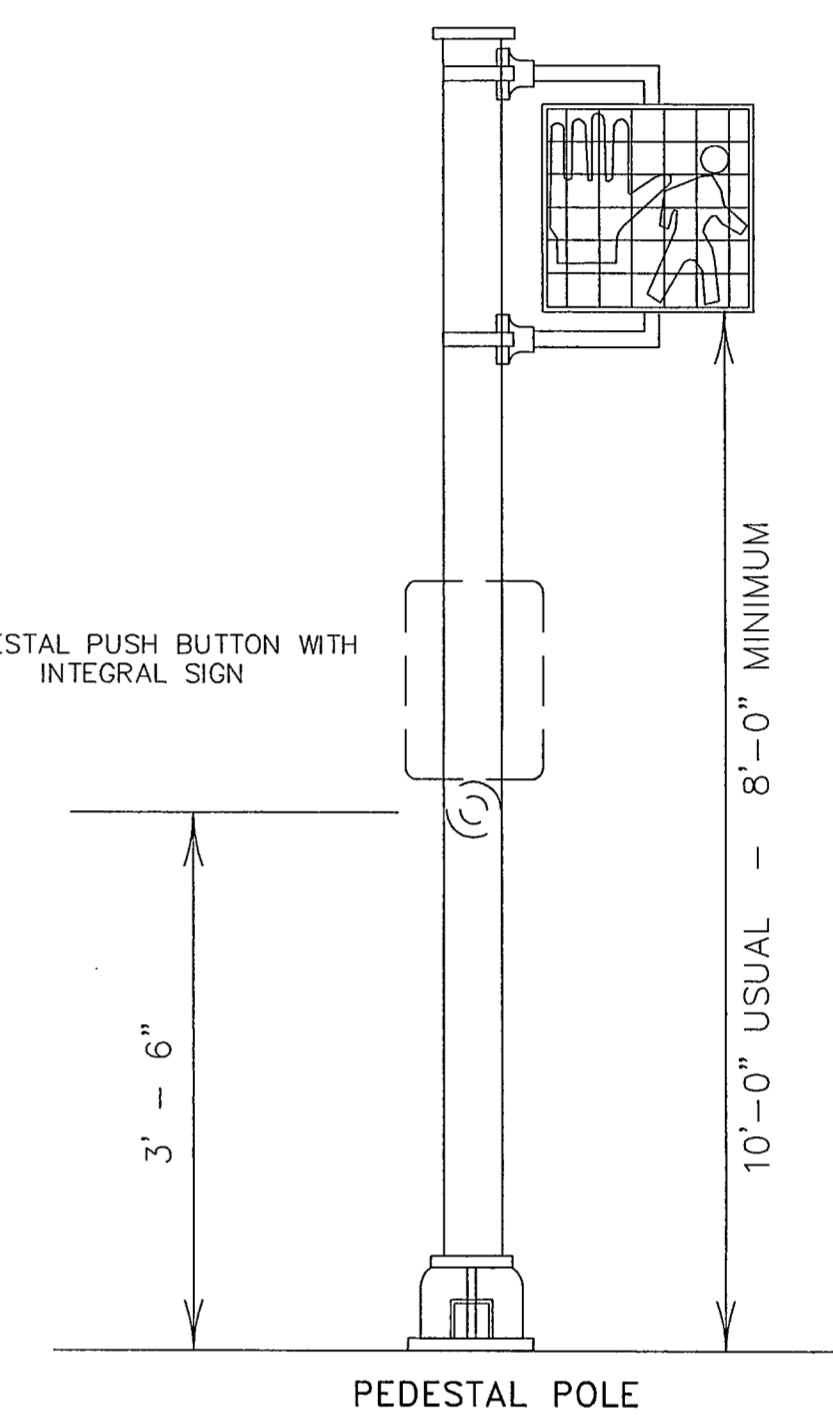


NOTE: CLAM SHELL MOUNTING HARDWARE MAY BE USED INSTEAD OF MOUNTING HARDWARE SHOWN ABOVE, AS APPROVED BY THE ENGINEER. ICC P/N 4805 OR MCCAIN QUICKMOUNT OR APPROVED EQUAL.

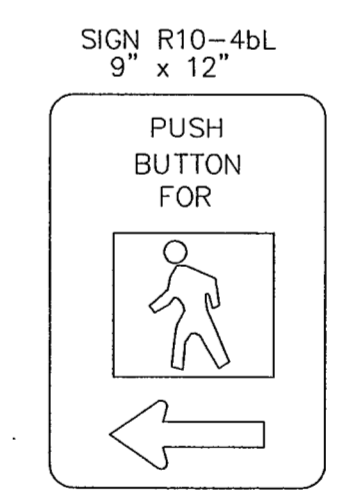
- NOTES:**
1. PEDESTRIAN SIGNAL HEADS SHALL BE MOUNTED WITH TYPE 1 CLAMPS AND APPROPRIATE TUBING.
 2. ALL PEDESTRIAN SIGNAL HEADS SHALL BE INSTALLED ON THE AWAY-FROM-TRAFFIC SIDE OF THE PEDESTAL OR MAST ARM POLE.
 3. ALL WIRING FOR PEDESTRIAN SIGNALS SHALL BE TOTALLY ENCLOSED WITHIN THE SIGNAL MOUNTING HARDWARE.
 4. ALL PEDESTRIAN SIGNAL HEADS AND PUSH BUTTON SIGNS SHALL DISPLAY THE SYMBOLIZED MESSAGES SHOWN ABOVE.



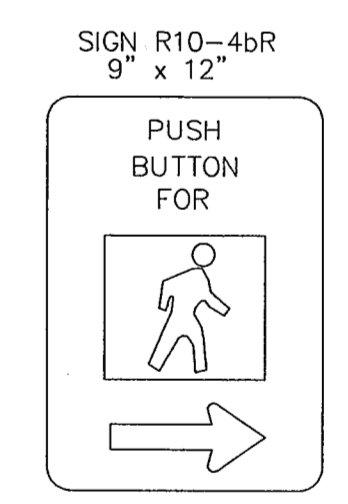
NOTE:
THE POLE ON THIS DRAWING IS SHOWN AS AN EXAMPLE ONLY. POLES OF SIMILAR DESIGN FOR ANY CROSS SECTION WHICH MEET THE SPECIFICATIONS AND REQUIREMENTS SHOWN ON THESE DRAWINGS AND ARE APPROVED BY THE TOWN WILL BE DEEMED ACCEPTABLE.



- * ONE (1) CLAMP SHALL BE USED ON SIGNS LESS THAN OR EQUAL TO 10'-0" IN LENGTH.
- * TWO (2) CLAMPS SHALL BE USED ON SIGNS GREATER THAN 10'-0" IN LENGTH.



PEDESTRIAN PUSHBUTTON SIGN DETAILS



PEDESTRIAN PUSHBUTTON SIGN DETAILS



THE SEAL APPEARING ON THIS DOCUMENT WAS AUTHORIZED BY: WILLIAM J. HATCHELL ON 2/18/11 ALTERATION OF A SEALED DOCUMENT WITHOUT PROPER NOTIFICATION TO THE RESPONSIBLE ENGINEER IS AN OFFENSE UNDER THE TEXAS ENGINEERING PRACTICE ACT.

THIS DETAIL SHEET WAS OBTAINED FROM TXDOT

BUILT AS PER SPECIFICATIONS AND PLANS BY DURABLE SPECIALTIES INC. PROJECT COORDINATOR

DATE: DECEMBER, 2001	SCALE: NOT TO SCALE	JOB NO.: 00-249	80
DRAWN: GBW	DESIGN: WJH	REVIEWED:	DWG: 249DETAILS-TRAF

ARAPAHO ROAD PHASE II
TRAFFIC AND PEDESTRIAN SIGNAL HEAD IDENTIFICATION

TOWN OF ADDISON

Grantham, Burge & Waldbauer
Engineers, Inc.

1919 S. SHILOH ROAD, SUITE 530, L.B. 27 GARLAND, TEXAS 75042
(972) 840-1916 (TEL)
(972) 840-2156 (FAX)

SHT. TS-20
OF
TS-21