

ARAPAHO WATER
B-26-12 04/02

Arapaho Ph. II water line revisions

B26-12

NO.	DATE	REVISION
1	2/06/02	PER ADDENDUM No.2
2	4/22/02	REVISED WATER LINE PLAN & PROFILE

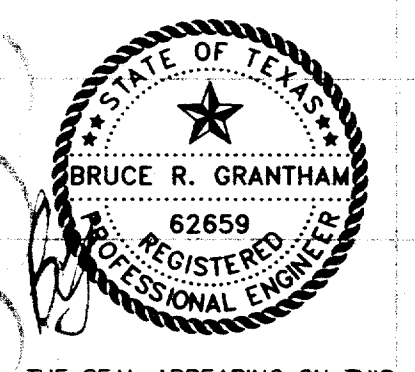
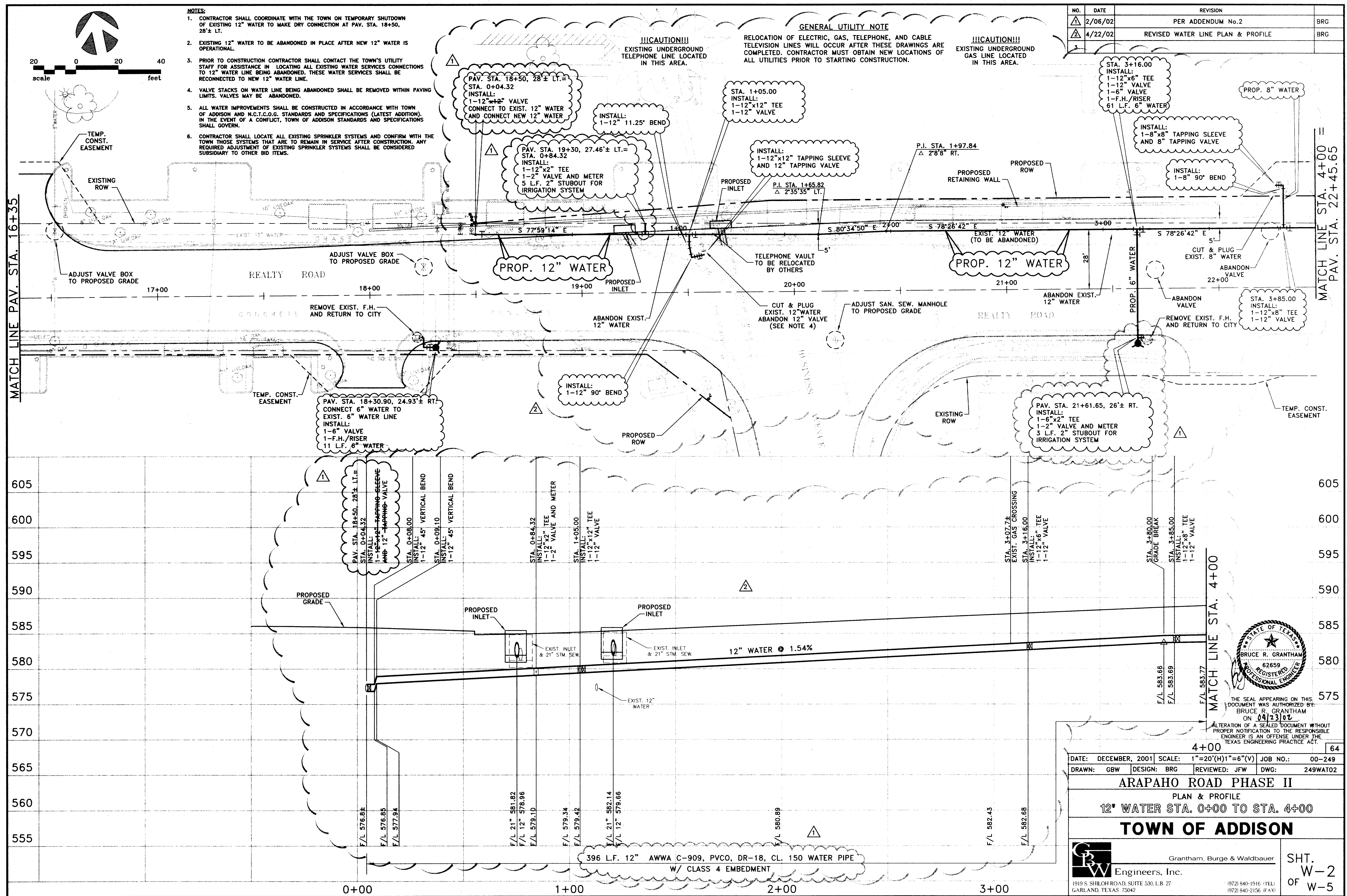
- NOTES:**
- CONTRACTOR SHALL COORDINATE WITH THE TOWN ON TEMPORARY SHUTDOWN OF EXISTING 12" WATER TO MAKE DRY CONNECTION AT PAV. STA. 18+50, 28'± LT.
 - EXISTING 12" WATER TO BE ABANDONED IN PLACE AFTER NEW 12" WATER IS OPERATIONAL.
 - PRIOR TO CONSTRUCTION CONTRACTOR SHALL CONTACT THE TOWN'S UTILITY STAFF FOR ASSISTANCE IN LOCATING ALL EXISTING WATER SERVICES CONNECTIONS TO 12" WATER LINE BEING ABANDONED. THESE WATER SERVICES SHALL BE RECONNECTED TO NEW 12" WATER LINE.
 - VALVE STACKS ON WATER LINE BEING ABANDONED SHALL BE REMOVED WITHIN PAVING LIMITS. VALVES MAY BE ABANDONED.
 - ALL WATER IMPROVEMENTS SHALL BE CONSTRUCTED IN ACCORDANCE WITH TOWN OF ADDISON AND M.C.T.C.O.G. STANDARDS AND SPECIFICATIONS (LATEST ADDITION). IN THE EVENT OF A CONFLICT, TOWN OF ADDISON STANDARDS AND SPECIFICATIONS SHALL GOVERN.
 - CONTRACTOR SHALL LOCATE ALL EXISTING SPRINKLER SYSTEMS AND CONFIRM WITH THE TOWN THOSE SYSTEMS THAT ARE TO REMAIN IN SERVICE AFTER CONSTRUCTION. ANY REQUIRED ADJUSTMENT OF EXISTING SPRINKLER SYSTEMS SHALL BE CONSIDERED SUBSIDIARY TO OTHER BID ITEMS.

GENERAL UTILITY NOTE

RELOCATION OF ELECTRIC, GAS, TELEPHONE, AND CABLE TELEVISION LINES WILL OCCUR AFTER THESE DRAWINGS ARE COMPLETED. CONTRACTOR MUST OBTAIN NEW LOCATIONS OF ALL UTILITIES PRIOR TO STARTING CONSTRUCTION.

!!!CAUTION!!!
EXISTING UNDERGROUND GAS LINE LOCATED IN THIS AREA.

!!!CAUTION!!!
EXISTING UNDERGROUND TELEPHONE LINE LOCATED IN THIS AREA.



THE SEAL APPEARING ON THIS DOCUMENT WAS AUTHORIZED BY: BRUCE R. GRANTHAM ON 04/23/02
ALTERATION OF A SEALED DOCUMENT WITHOUT PROPER NOTIFICATION TO THE RESPONSIBLE ENGINEER IS AN OFFENSE UNDER THE TEXAS ENGINEERING PRACTICE ACT.

DATE: DECEMBER, 2001	SCALE: 1"=20'(H)1"=6'(V)	JOB NO.: 00-249
DRAWN: GBW	DESIGN: BRG	REVIEWED: JFW
		DWG: 249WAT02

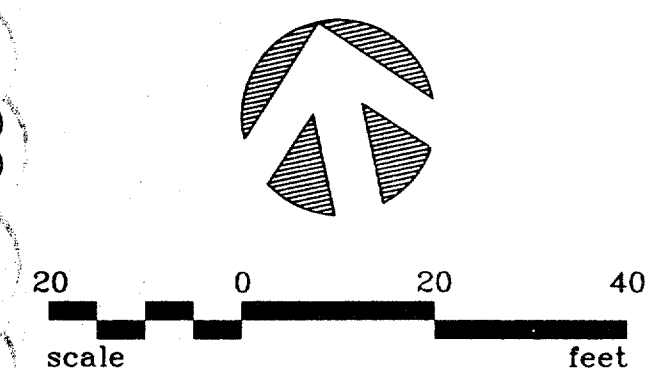
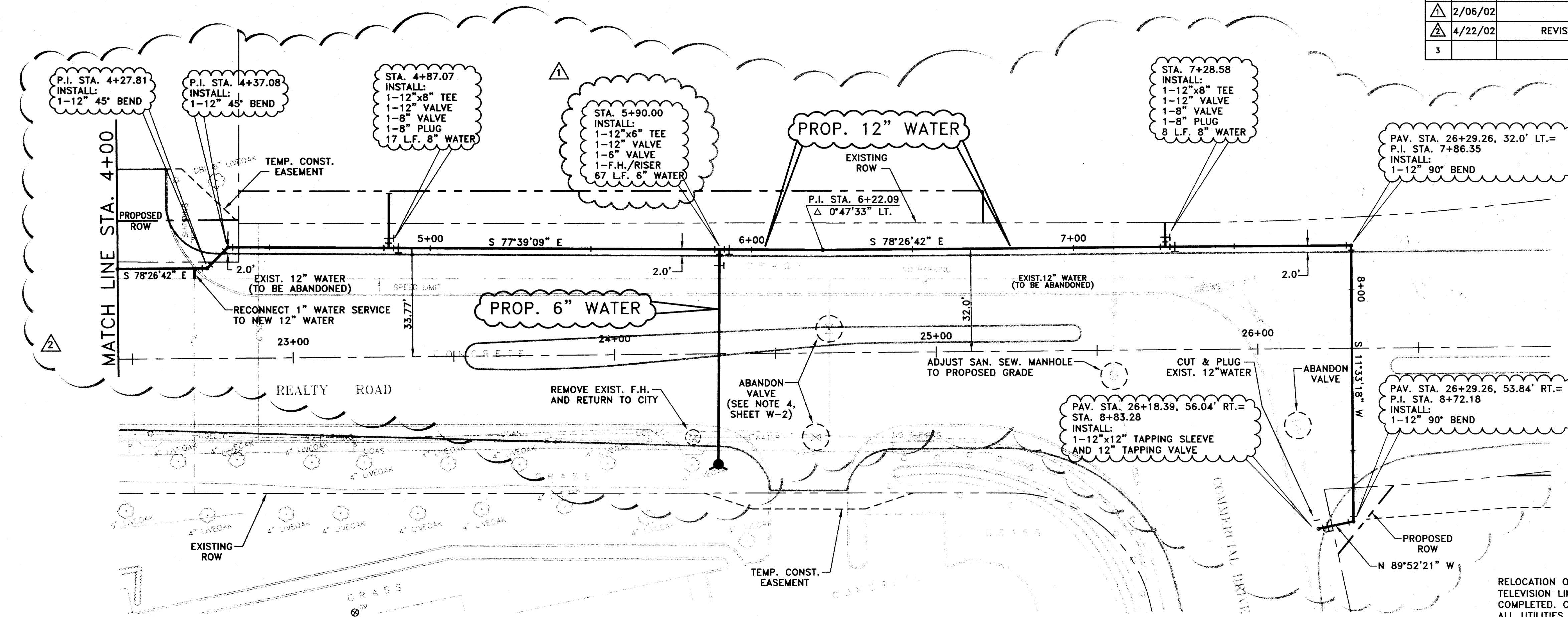
ARAPAHO ROAD PHASE II
PLAN & PROFILE
12" WATER STA. 0+00 TO STA. 4+00

TOWN OF ADDISON

Grantham, Burge & Waldbauer
Engineers, Inc.
1919 S. SHILOH ROAD, SUITE 530, L.B. 27 GARLAND, TEXAS 75042
(972) 840-1916 (TEL)
(972) 840-2156 (FAX)

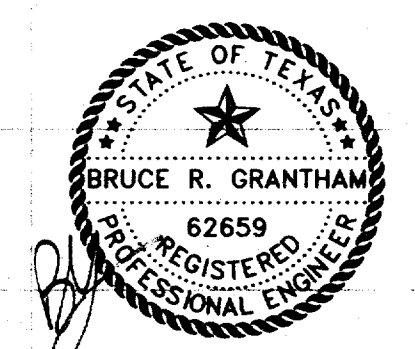
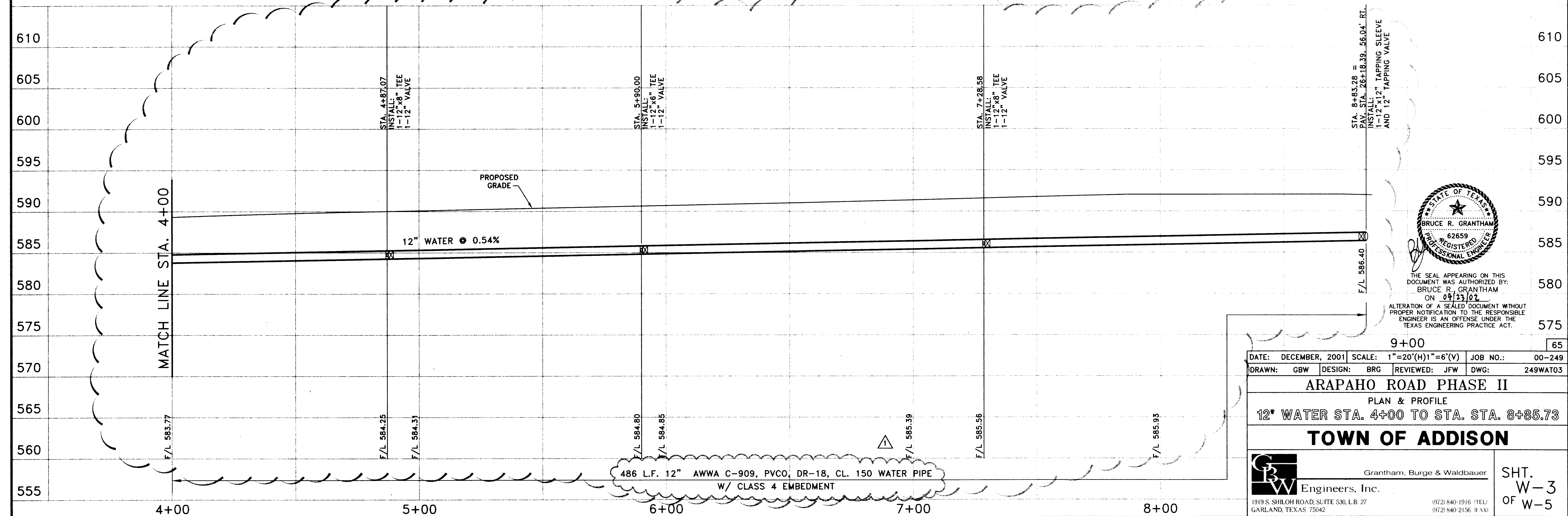
SHT. W-2 OF W-5

NO.	DATE	REVISION	
1	2/06/02	PER ADDENDUM No.2	BRG
2	4/22/02	REVISED WATER LOCATION, ADD STUBOUTS	BRG
3			



NOTES:
1. SEE SHEET W-2 FOR ADDITIONAL WATER NOTES.

GENERAL UTILITY NOTE
RELOCATION OF ELECTRIC, GAS, TELEPHONE, AND CABLE TELEVISION LINES WILL OCCUR AFTER THESE DRAWINGS ARE COMPLETED. CONTRACTOR MUST OBTAIN NEW LOCATIONS OF ALL UTILITIES PRIOR TO STARTING CONSTRUCTION.



THE SEAL APPEARING ON THIS DOCUMENT WAS AUTHORIZED BY:
BRUCE R. GRANTHAM
ON 05/23/02
ALTERATION OF A SEALED DOCUMENT WITHOUT PROPER NOTIFICATION TO THE RESPONSIBLE ENGINEER IS AN OFFENSE UNDER THE TEXAS ENGINEERING PRACTICE ACT.

DATE:	DECEMBER, 2001	SCALE:	1"=20'(H)1"=6'(V)	JOB NO.:	00-249
DRAWN:	GBW	DESIGN:	BRG	REVIEWED:	JFW
		DWG:	249WAT03		

ARAPAHO ROAD PHASE II
PLAN & PROFILE
12" WATER STA. 4+00 TO STA. STA. 8+85.73

TOWN OF ADDISON

SHT. W-3 OF W-5

Grantham, Burge & Waldbauer
Engineers, Inc.
1919 S. SHILOH ROAD, SUITE 530, L.B. 27 GARLAND, TEXAS 75042
(972) 540-1916 (FAX) (972) 540-2156 (FAX)