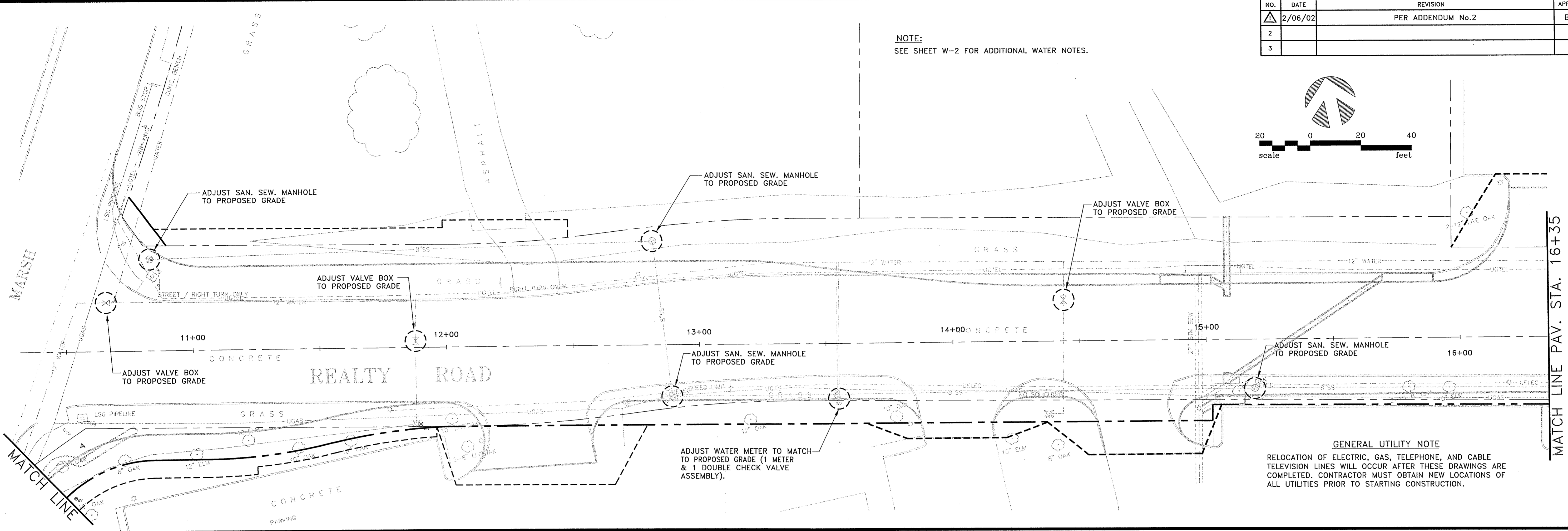
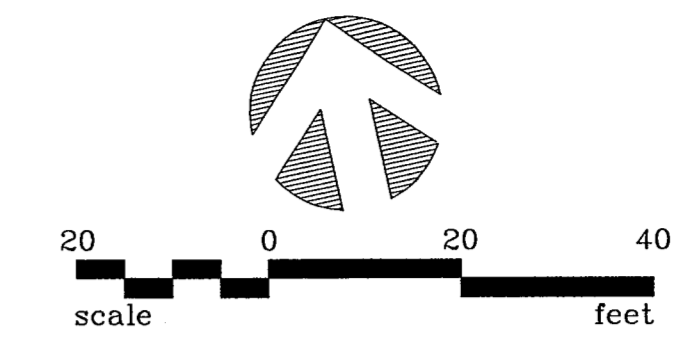


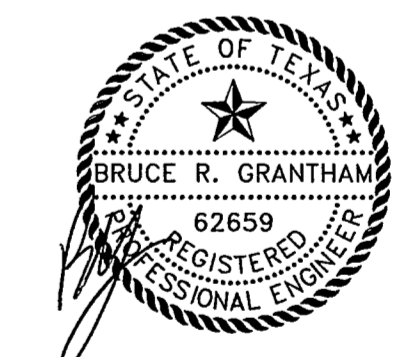
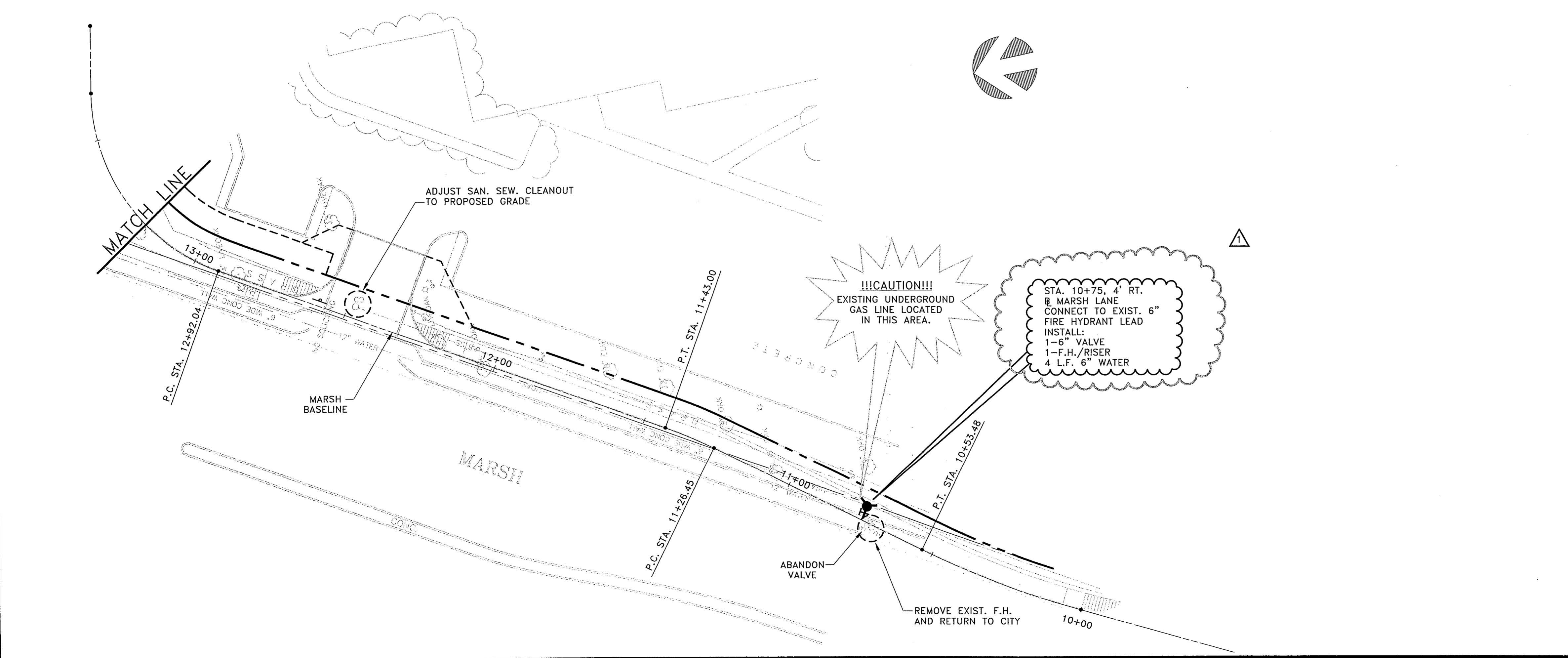
NO.	DATE	REVISION	APPROV.
1	2/06/02	PER ADDENDUM No.2	BRG
2			
3			

NOTE:
SEE SHEET W-2 FOR ADDITIONAL WATER NOTES.



GENERAL UTILITY NOTE
RELOCATION OF ELECTRIC, GAS, TELEPHONE, AND CABLE TELEVISION LINES WILL OCCUR AFTER THESE DRAWINGS ARE COMPLETED. CONTRACTOR MUST OBTAIN NEW LOCATIONS OF ALL UTILITIES PRIOR TO STARTING CONSTRUCTION.

NOTE:
SEE SHEET W-2 FOR ADDITIONAL WATER NOTES.



THE SEAL APPEARING ON THIS DOCUMENT WAS AUTHORIZED BY:
BRUCE R. GRANTHAM
ON 02/14/02
ALTERATION OF A SEALED DOCUMENT WITHOUT PROPER NOTIFICATION TO THE RESPONSIBLE ENGINEER IS AN OFFENSE UNDER THE TEXAS ENGINEERING PRACTICE ACT.

DATE: DECEMBER, 2001	SCALE: 1" = 20'	JOB NO.: 00-249
DRAWN: GBW	DESIGN: JFW	REVIEWED: BRG
DWG: 249WAT01		

ARAPAHO ROAD PHASE II
PLAN VIEW
UTILITY ADJUSTMENT PLAN
TOWN OF ADDISON

Grantham, Burge & Waldbauer
Engineers, Inc.
1919 S. SHILOH ROAD, SUITE 530, L.B. 27
GARLAND, TEXAS 75042
(972) 840-1916 (TEL)
(972) 840-2156 (FAX)

SHT. W-1
OF W-5