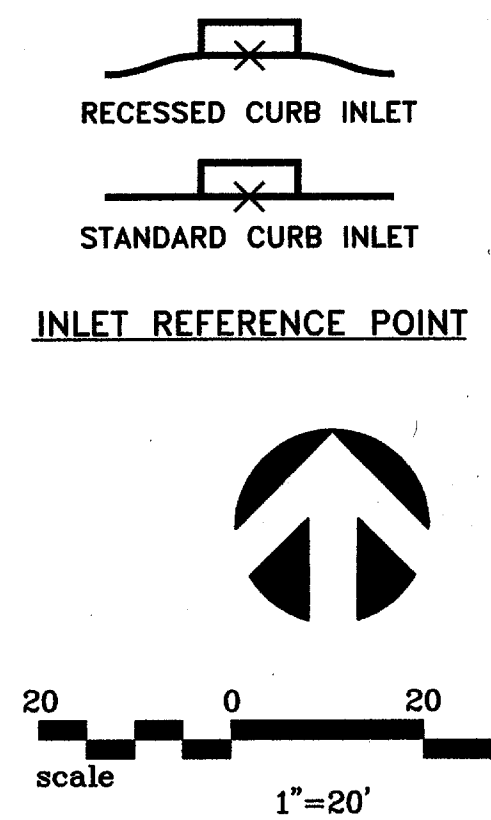
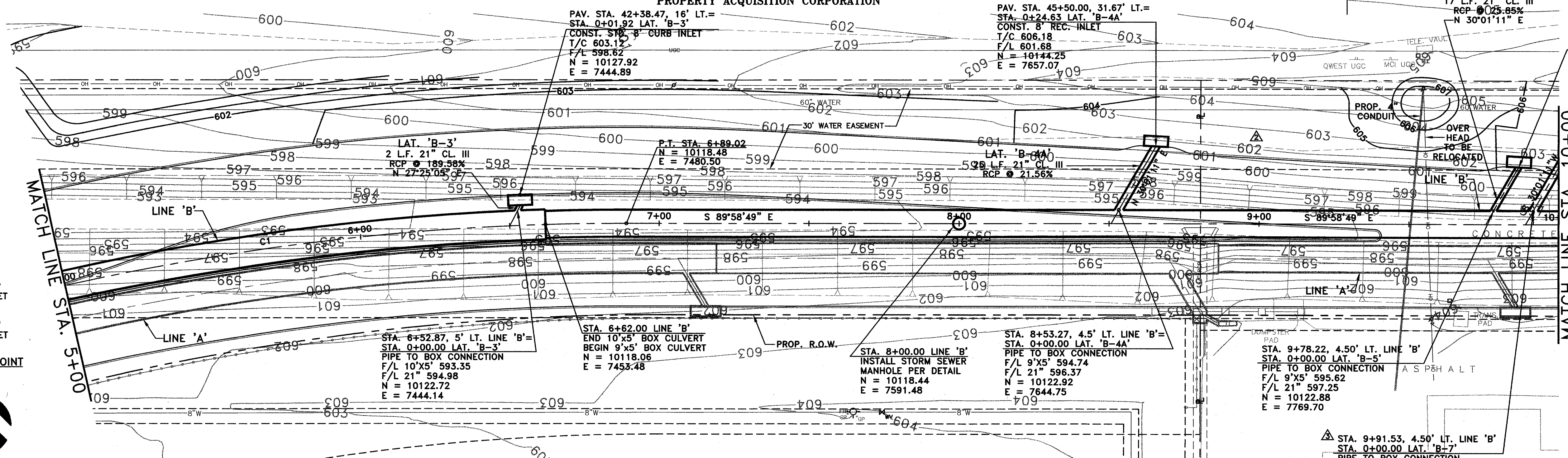


NO.	DATE	REVISION	APPROV.
△	06/28/04	REVISED PER ADDENDA	A.K.C.
△	06/28/04	REVISED PER G & A	A.K.C.
△	12/15/04	REVISED PER RFI #40	

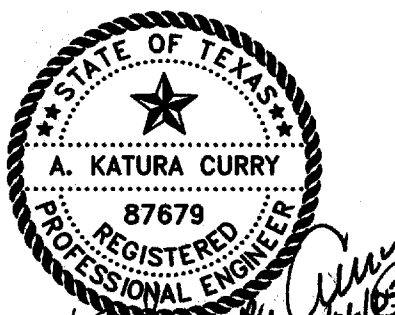
DALLAS AREA RAPID TRANSIT
PROPERTY ACQUISITION CORPORATION



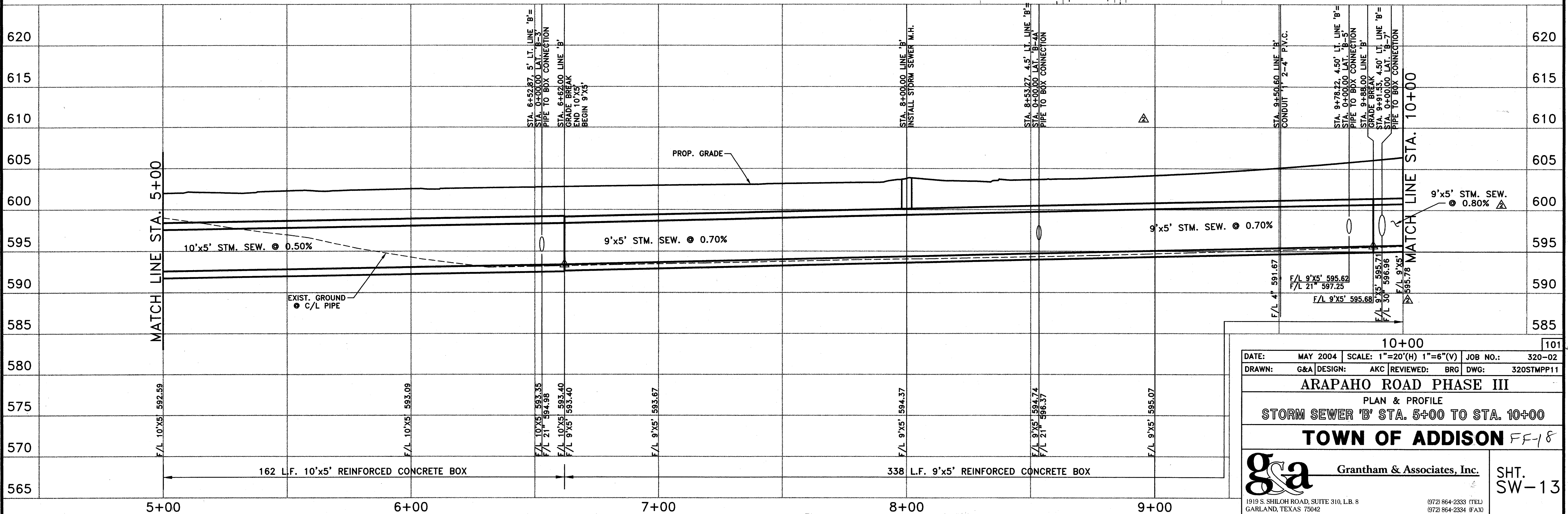
LINE 'B' CURVE DATA

NUMBER	RADIUS	DELTA	ARC LENGTH	CHORD BEARING	CHORD LENGTH
C1	855.83	25°41'58"	383.88	N 77°10'12" E	380.67

NOTE
REFER TO SW-1 FOR
STORM SEWER NOTES



THE SEAL APPEARING ON THIS DOCUMENT WAS AUTHORIZED BY:
A. KATURA CURRY
ON 12-16-04
ALTERATION OF A SEALED DOCUMENT WITHOUT PROPER NOTIFICATION TO THE RESPONSIBLE ENGINEER IS AN OFFENSE UNDER THE TEXAS ENGINEERING PRACTICE ACT.



10+00 101

DATE: MAY 2004 SCALE: 1"=20'(H) 1"=6'(V) JOB NO.: 320-02
DRAWN: G&A DESIGN: AKC REVIEWED: BRG DWG: 320STMP11

ARAPAHO ROAD PHASE III
PLAN & PROFILE
STORM SEWER 'B' STA. 5+00 TO STA. 10+00

TOWN OF ADDISON FF-18

g&a Grantham & Associates, Inc. SHT. SW-13

1919 S. SHILOH ROAD, SUITE 310, L.B. 8 GARLAND, TEXAS 75042 (972) 864-2333 (TEL) (972) 864-2334 (FAX)

ARAPAHO Storm Drain Rev.3 12/15/04 FF-18