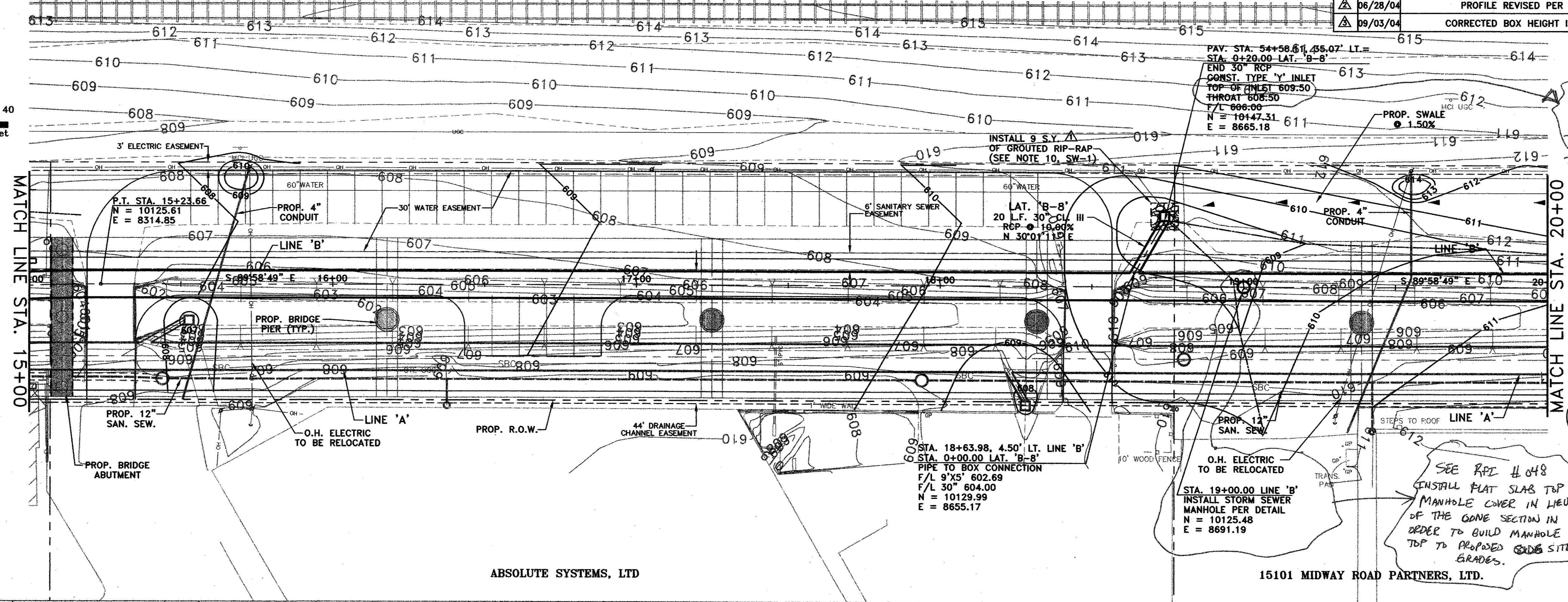
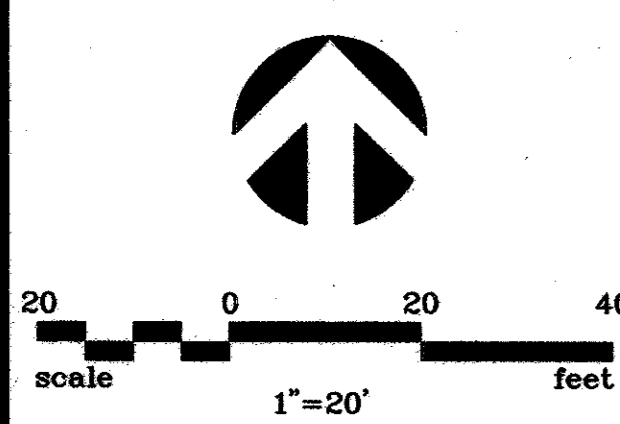


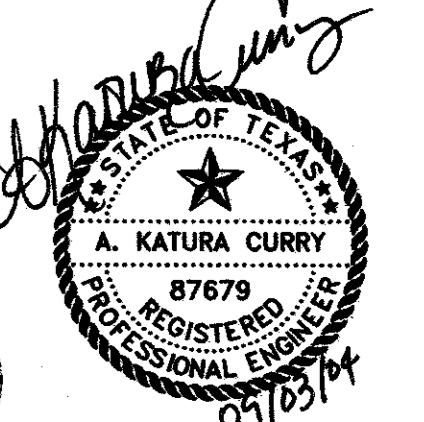
DALLAS AREA RAPID TRANSIT
PROPERTY ACQUISITION CORPORATION

NO.	DATE	REVISION	APPROV.
△	06/28/04	REVISED PER ADDENDA	A.K.C.
△	06/28/04	PROFILE REVISED PER G & A	A.K.C.
△	09/03/04	CORRECTED BOX HEIGHT IN PROFILE	A.K.C.

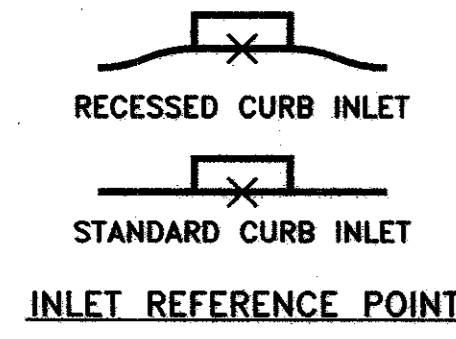


SEE RFI # 059
CHANGES TO INLET
B-8.
TOP INLET = 610.20
THROAT = 609.20

NOTE
REFER TO SW-1 FOR
STORM SEWER NOTES

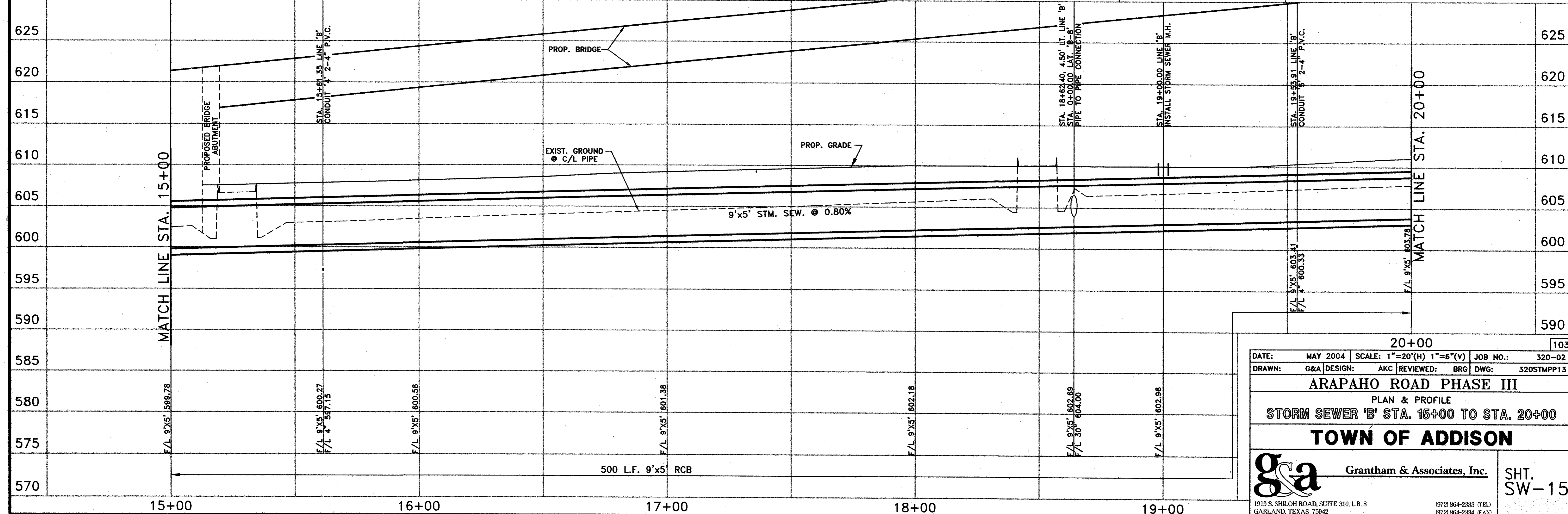


THE SEAL APPEARING ON THIS DOCUMENT WAS AUTHORIZED BY:
A. KATURA CURRY
ON 9-3-04.
ALTERATION OF A SEALED DOCUMENT WITHOUT PROPER NOTIFICATION TO THE RESPONSIBLE ENGINEER IS AN OFFENSE UNDER THE TEXAS ENGINEERING PRACTICE ACT.



ABSOLUTE SYSTEMS, LTD

15101 MIDWAY ROAD PARTNERS, LTD.



20+00				103	
DATE:	MAY 2004	SCALE:	1"=20'(H) 1"=6'(V)	JOB NO.:	320-02
DRAWN:	G&A	DESIGN:	AKC	REVIEWED:	BRG
ARAPAHO ROAD PHASE III				DWG: 320STMP13	
PLAN & PROFILE					
STORM SEWER 'B' STA. 15+00 TO STA. 20+00					
TOWN OF ADDISON					
Grantham & Associates, Inc.				SHT. SW-15	
1919 S. SHILOH ROAD, SUITE 310, L.B. 8 GARLAND, TEXAS 75042				(972) 864-2333 (TEL) (972) 864-2334 (FAX)	