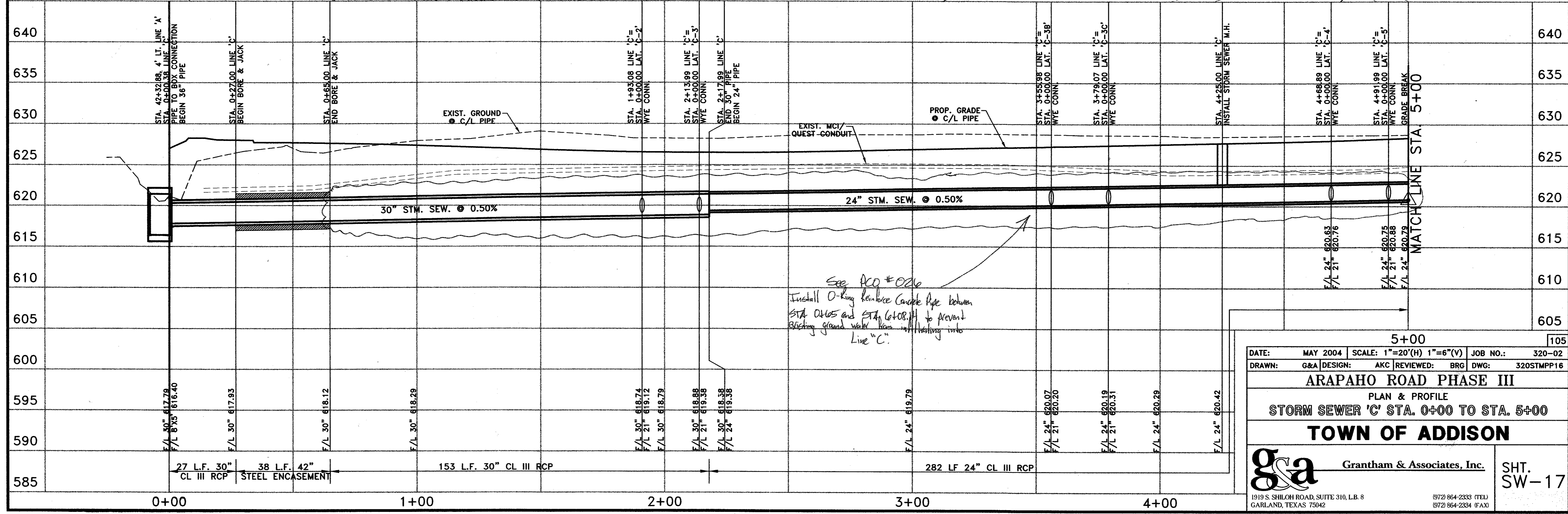
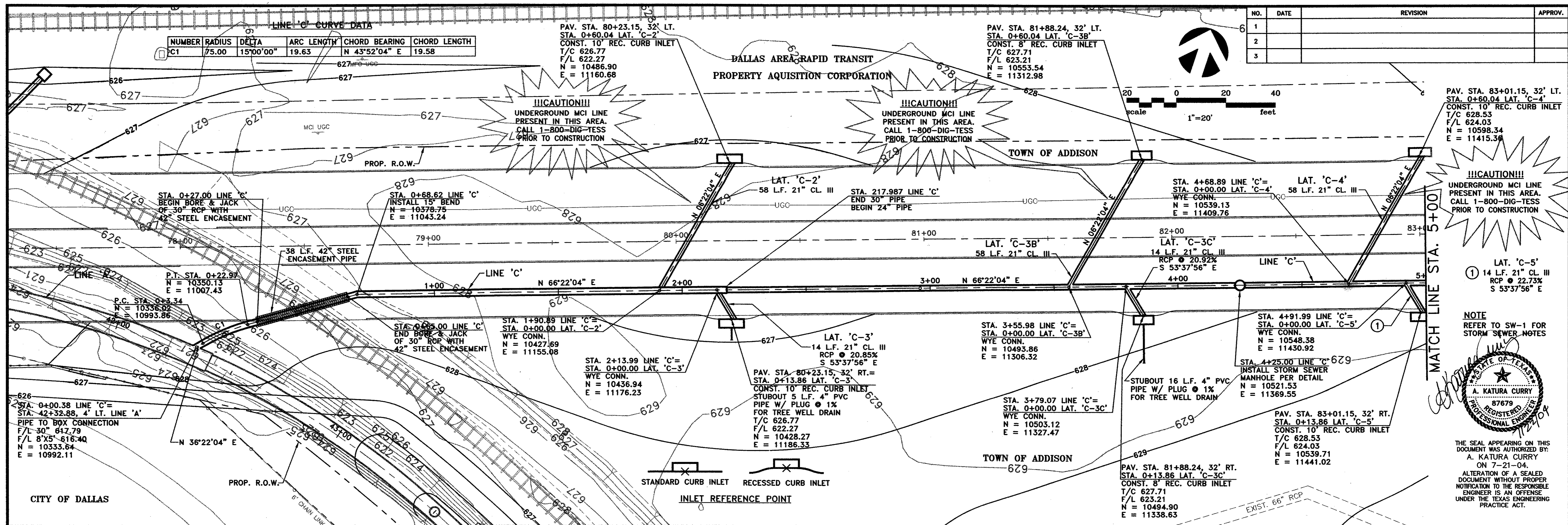


NO.	DATE	REVISION	APPROV.
1			
2			
3			

NUMBER	RADIUS	DELTA	ARC LENGTH	CHORD BEARING	CHORD LENGTH
C1	75.00	15°00'00"	19.63	N 43°52'04" E	19.58



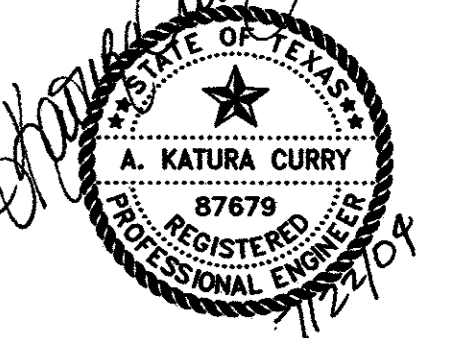
See ACO #026
Install O-ring Reinforced Concrete Pipe between STA. 0+105 and STA. 0+108.11 to prevent backing ground water from infiltrating into Line "C".

!!!CAUTION!!!
UNDERGROUND MCI LINE PRESENT IN THIS AREA. CALL 1-800-DIG-TESS PRIOR TO CONSTRUCTION

!!!CAUTION!!!
UNDERGROUND MCI LINE PRESENT IN THIS AREA. CALL 1-800-DIG-TESS PRIOR TO CONSTRUCTION

!!!CAUTION!!!
LAT. 'C-5'
14 L.F. 21" CL. III
RCP @ 22.73%
S 53°37'56" E

NOTE
REFER TO SW-1 FOR STORM SEWER NOTES



THE SEAL APPEARING ON THIS DOCUMENT WAS AUTHORIZED BY:
A. KATURA CURRY
ON 7-21-04.
ALTERATION OF A SEALED DOCUMENT WITHOUT PROPER NOTIFICATION TO THE RESPONSIBLE ENGINEER IS AN OFFENSE UNDER THE TEXAS ENGINEERING PRACTICE ACT.

5+00 105

DATE: MAY 2004 SCALE: 1"=20'(H) 1"=6"(V) JOB NO.: 320-02
 DRAWN: G&A DESIGN: AKC REVIEWED: BRG DWG: 320STMP16

ARAPAHO ROAD PHASE III
 PLAN & PROFILE
STORM SEWER 'C' STA. 0+00 TO STA. 5+00
TOWN OF ADDISON

g&a Grantham & Associates, Inc. SHT. SW-17

1919 S. SHILOH ROAD, SUITE 310, L.B. 8 GARLAND, TEXAS 75042 (972) 864-2333 (TEL) (972) 864-2334 (FAX)