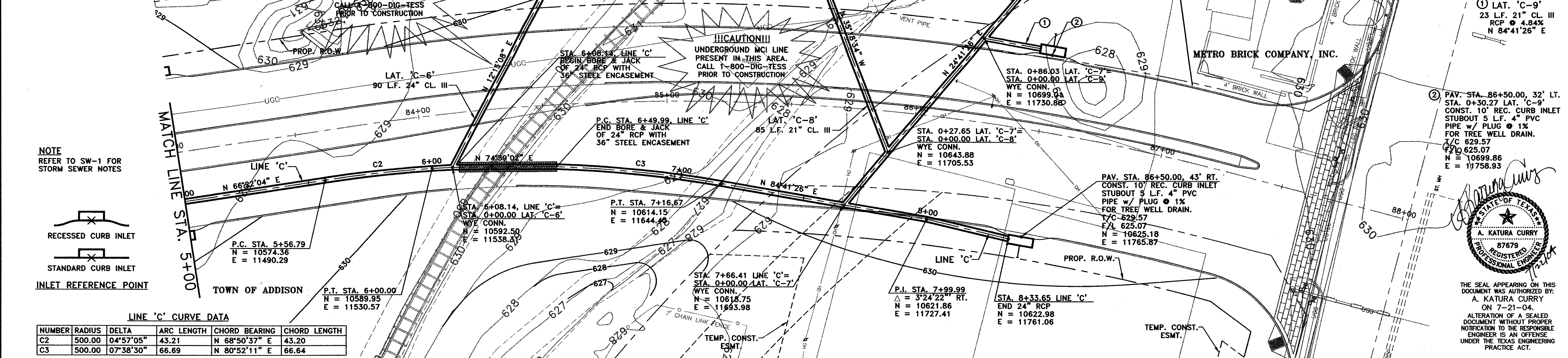
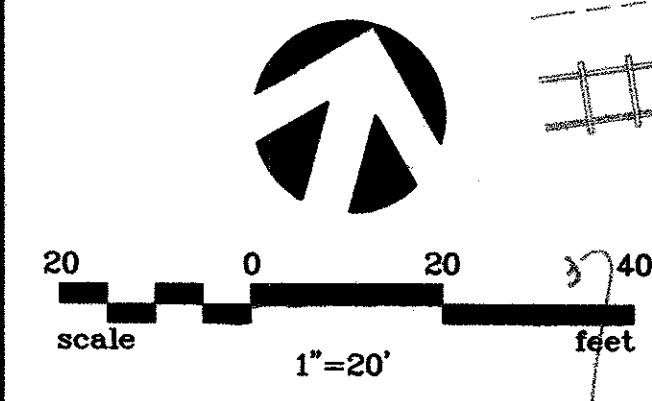
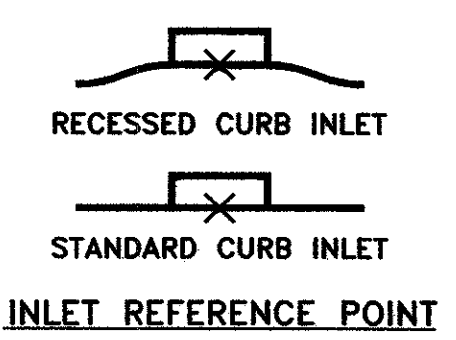


NO.	DATE	REVISION	APPROV.
1	06/28/04	REVISED PER ADDENDA	A.K.C.
2			
3			

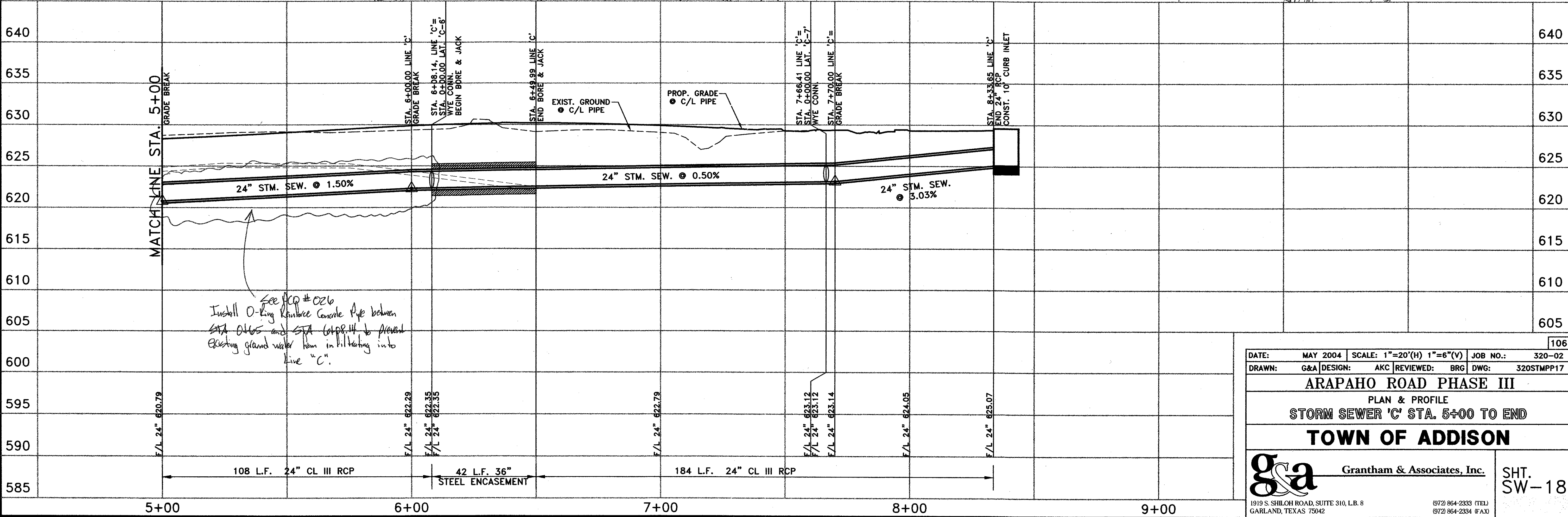


NOTE
REFER TO SW-1 FOR
STORM SEWER NOTES

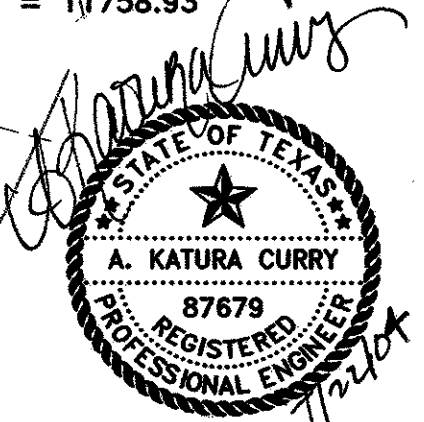


LINE 'C' CURVE DATA

NUMBER	RADIUS	DELTA	ARC LENGTH	CHORD BEARING	CHORD LENGTH
C2	500.00	04°57'05"	43.21	N 68°50'37" E	43.20
C3	500.00	07°38'30"	66.69	N 80°52'11" E	66.64



See ICP #026
Install O-Ring Rubber Conduit Pipe between
STA. 6+08 and STA. 6+49.99 to prevent
existing ground water from infiltrating into
Line "C".



THE SEAL APPEARING ON THIS DOCUMENT WAS AUTHORIZED BY:
A. KATURA CURRY
ON 7-21-04.
ALTERATION OF A SEALED DOCUMENT WITHOUT PROPER NOTIFICATION TO THE RESPONSIBLE ENGINEER IS AN OFFENSE UNDER THE TEXAS ENGINEERING PRACTICE ACT.

DATE:	MAY 2004	SCALE:	1"=20'(H) 1"=6"(V)	JOB NO.:	320-02
DRAWN:	G&A	DESIGN:	AKC	REVIEWED:	BRG
ARAPAHO ROAD PHASE III				DWG: 320STMP17	
PLAN & PROFILE					
STORM SEWER 'C' STA. 5+00 TO END					
TOWN OF ADDISON					
g&a Grantham & Associates, Inc.				SHT. SW-18	
1919 S. SHILOH ROAD, SUITE 310, L.B. 8 GARLAND, TEXAS 75042				(972) 864-2333 (TEL) (972) 864-2334 (FAX)	