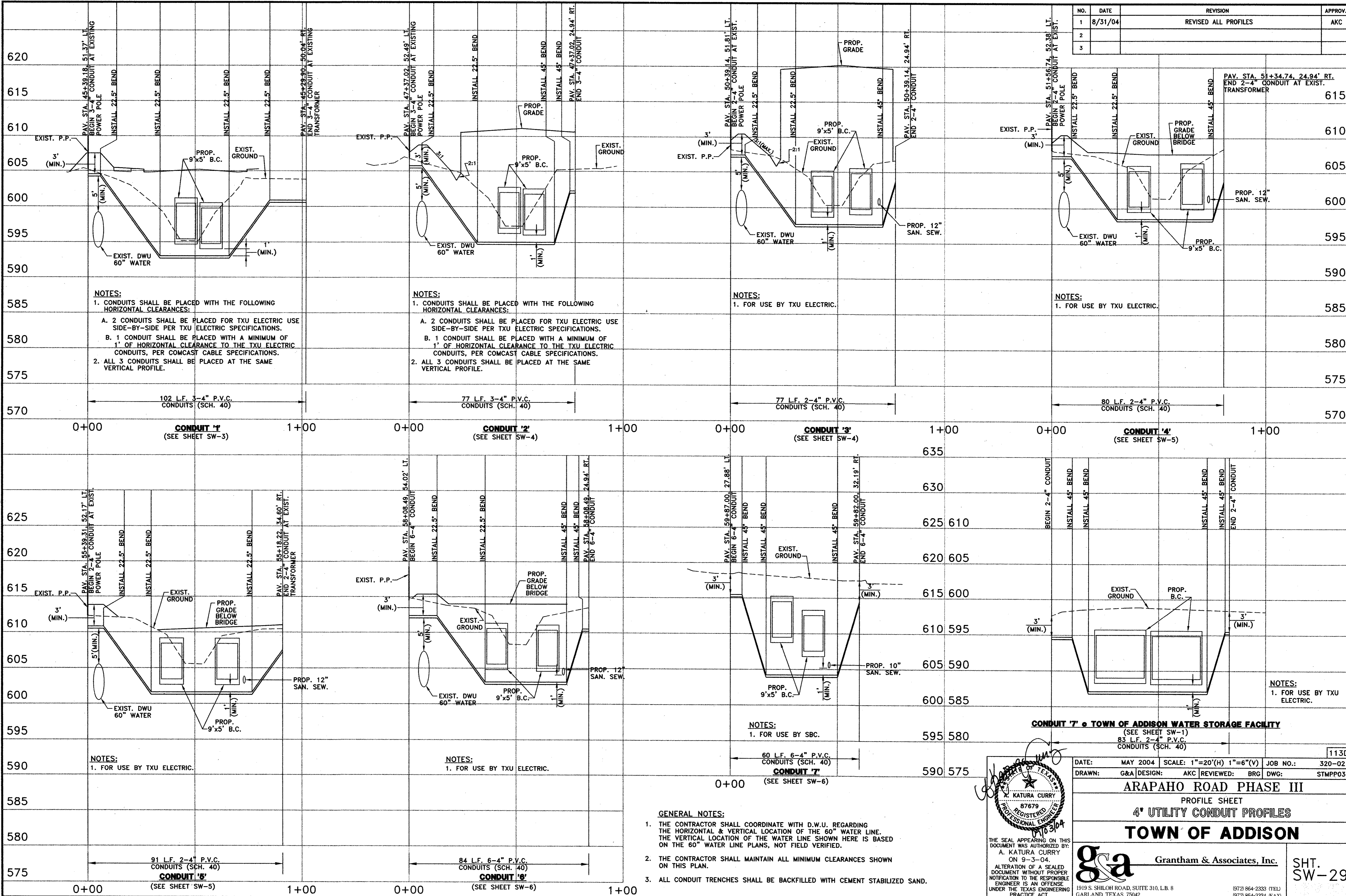


NO.	DATE	REVISION	APPROV.
1	8/31/04	REVISED ALL PROFILES	AKC
2			
3			



**NOTES:**  
 1. CONDUITS SHALL BE PLACED WITH THE FOLLOWING HORIZONTAL CLEARANCES:  
 A. 2 CONDUITS SHALL BE PLACED FOR TXU ELECTRIC USE SIDE-BY-SIDE PER TXU ELECTRIC SPECIFICATIONS.  
 B. 1 CONDUIT SHALL BE PLACED WITH A MINIMUM OF 1' OF HORIZONTAL CLEARANCE TO THE TXU ELECTRIC CONDUITS, PER COMCAST CABLE SPECIFICATIONS.  
 2. ALL 3 CONDUITS SHALL BE PLACED AT THE SAME VERTICAL PROFILE.

**NOTES:**  
 1. CONDUITS SHALL BE PLACED WITH THE FOLLOWING HORIZONTAL CLEARANCES:  
 A. 2 CONDUITS SHALL BE PLACED FOR TXU ELECTRIC USE SIDE-BY-SIDE PER TXU ELECTRIC SPECIFICATIONS.  
 B. 1 CONDUIT SHALL BE PLACED WITH A MINIMUM OF 1' OF HORIZONTAL CLEARANCE TO THE TXU ELECTRIC CONDUITS, PER COMCAST CABLE SPECIFICATIONS.  
 2. ALL 3 CONDUITS SHALL BE PLACED AT THE SAME VERTICAL PROFILE.

**NOTES:**  
 1. FOR USE BY TXU ELECTRIC.

**NOTES:**  
 1. FOR USE BY TXU ELECTRIC.

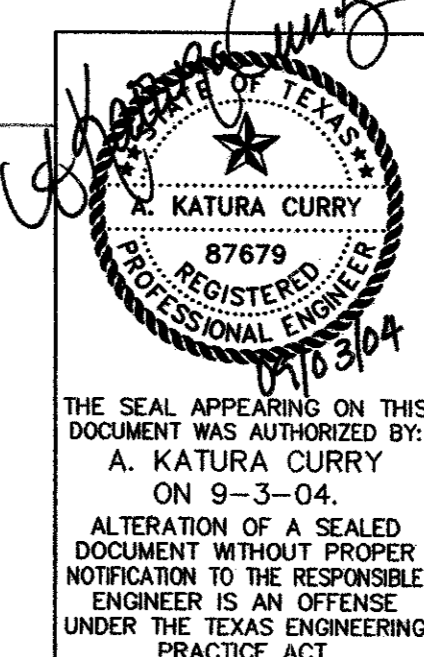
**NOTES:**  
 1. FOR USE BY TXU ELECTRIC.

**NOTES:**  
 1. FOR USE BY TXU ELECTRIC.

**NOTES:**  
 1. FOR USE BY SBC.

**NOTES:**  
 1. FOR USE BY TXU ELECTRIC.

- GENERAL NOTES:**
- THE CONTRACTOR SHALL COORDINATE WITH D.W.U. REGARDING THE HORIZONTAL & VERTICAL LOCATION OF THE 60" WATER LINE. THE VERTICAL LOCATION OF THE WATER LINE SHOWN HERE IS BASED ON THE 60" WATER LINE PLANS, NOT FIELD VERIFIED.
  - THE CONTRACTOR SHALL MAINTAIN ALL MINIMUM CLEARANCES SHOWN ON THIS PLAN.
  - ALL CONDUIT TRENCHES SHALL BE BACKFILLED WITH CEMENT STABILIZED SAND.



DATE:	MAY 2004	SCALE:	1"=20'(H) 1"=6'(V)	JOB NO.:	320-02
DRAWN:	G&A	DESIGN:	AKC	REVIEWED:	BRG
		DWG:			STMP03

**ARAPAHO ROAD PHASE III**  
 PROFILE SHEET  
**4" UTILITY CONDUIT PROFILES**  
**TOWN OF ADDISON**

**g&a** Grantham & Associates, Inc. **SHT. SW-29**

1919 S. SHILOH ROAD, SUITE 310, L.B. 8 GARLAND, TEXAS 75042 (972) 864-2333 (TEL) (972) 864-2334 (FAX)