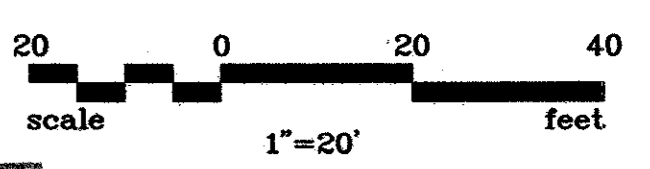
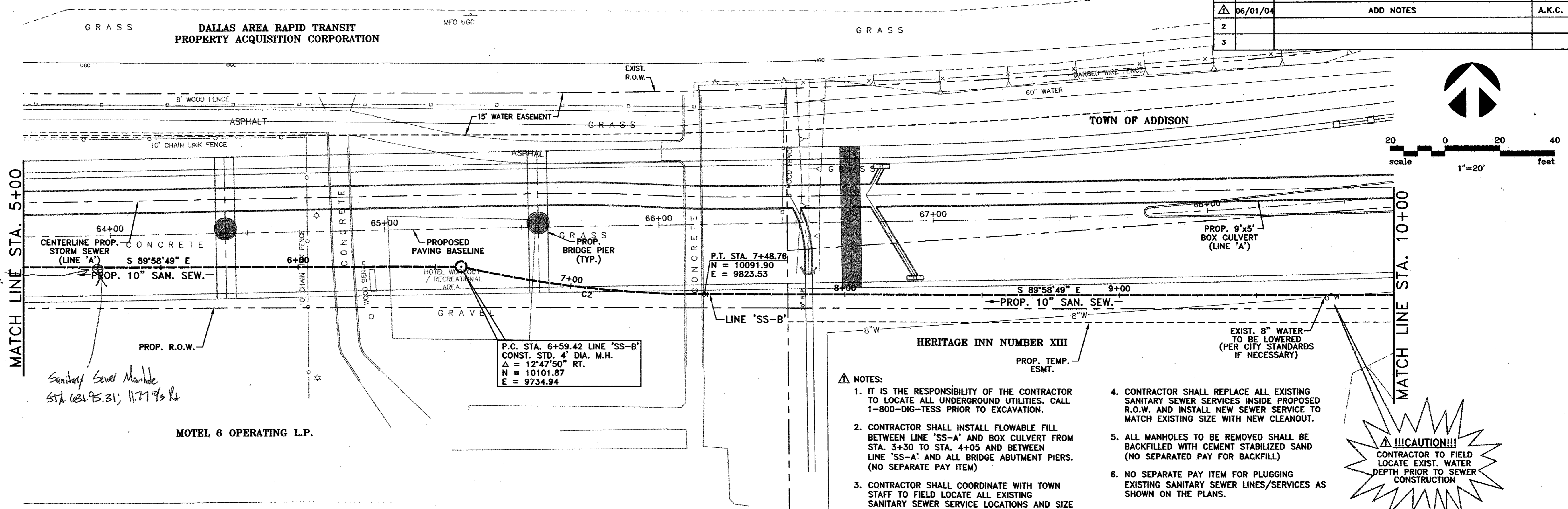


NO.	DATE	REVISION	APPROV.
1	06/01/04	ADD NOTES	A.K.C.
2			
3			



MATCH LINE STA. 5+00

MATCH LINE STA. 10+00

*Sanitary Sewer Manhole
Sta. 6+95.31, 11.77' R*

MOTEL 6 OPERATING L.P.

P.C. STA. 6+59.42 LINE 'SS-B'
CONST. STD. 4' DIA. M.H.
Δ = 12°47'50" RT.
N = 10101.87
E = 9734.94

P.T. STA. 7+48.76
N = 10091.90
E = 9823.53

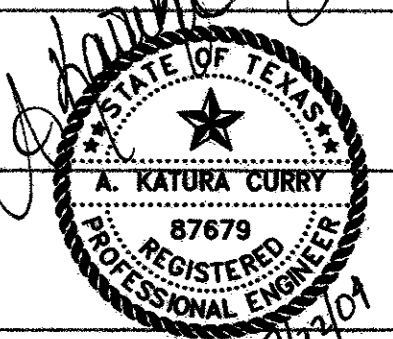
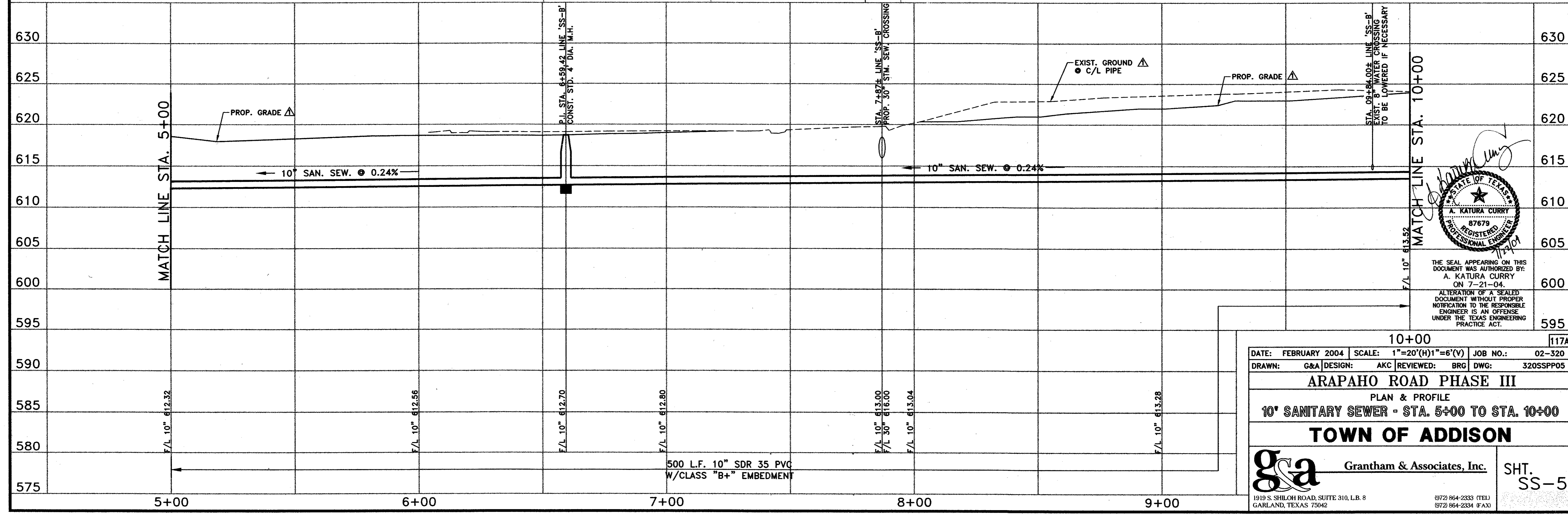
NOTES:

- IT IS THE RESPONSIBILITY OF THE CONTRACTOR TO LOCATE ALL UNDERGROUND UTILITIES. CALL 1-800-DIG-TESS PRIOR TO EXCAVATION.
- CONTRACTOR SHALL INSTALL FLOWABLE FILL BETWEEN LINE 'SS-A' AND BOX CULVERT FROM STA. 3+30 TO STA. 4+05 AND BETWEEN LINE 'SS-A' AND ALL BRIDGE ABUTMENT PIERS. (NO SEPARATE PAY ITEM)
- CONTRACTOR SHALL COORDINATE WITH TOWN STAFF TO FIELD LOCATE ALL EXISTING SANITARY SEWER SERVICE LOCATIONS AND SIZE PRIOR TO CONSTRUCTION. ALL NEW AND EXPOSED EXISTING SANITARY SEWER SERVICE LINES SHALL BE INSPECTED FOR CONDITION PRIOR TO BACKFILL WITH CEMENT STABILIZED SAND. (NO SEPARATE PAY ITEM)
- CONTRACTOR SHALL REPLACE ALL EXISTING SANITARY SEWER SERVICES INSIDE PROPOSED R.O.W. AND INSTALL NEW SEWER SERVICE TO MATCH EXISTING SIZE WITH NEW CLEANOUT.
- ALL MANHOLES TO BE REMOVED SHALL BE BACKFILLED WITH CEMENT STABILIZED SAND (NO SEPARATED PAY FOR BACKFILL)
- NO SEPARATE PAY ITEM FOR PLUGGING EXISTING SANITARY SEWER LINES/SERVICES AS SHOWN ON THE PLANS.

!!!CAUTION!!!
CONTRACTOR TO FIELD LOCATE EXIST. WATER DEPTH PRIOR TO SEWER CONSTRUCTION

LINE 'SS-B' CURVE DATA:

NUMBER	RADIUS	DELTA	ARC LENGTH	CHORD BEARING	CHORD LENGTH
C2	400.00'	12°47'50"	89.34'	S 83°34'54" E	89.16'



THE SEAL APPEARING ON THIS DOCUMENT WAS AUTHORIZED BY:
A. KATURA CURRY
ON 7-21-04.
ALTERATION OF A SEALED DOCUMENT WITHOUT PROPER NOTIFICATION TO THE RESPONSIBLE ENGINEER IS AN OFFENSE UNDER THE TEXAS ENGINEERING PRACTICE ACT.

10+00 117A

DATE: FEBRUARY 2004 SCALE: 1"=20'(H)1"=6'(V) JOB NO.: 02-320
 DRAWN: G&A DESIGN: AKC REVIEWED: BRG DWG: 320SSPP05

ARAPAHO ROAD PHASE III
 PLAN & PROFILE
10' SANITARY SEWER - STA. 5+00 TO STA. 10+00

TOWN OF ADDISON

g&a Grantham & Associates, Inc. SHT. SS-5

1919 S. SHILOH ROAD, SUITE 310, L.B. 8 GARLAND, TEXAS 75042 (972) 864-2333 (TEL) (972) 864-2334 (FAX)