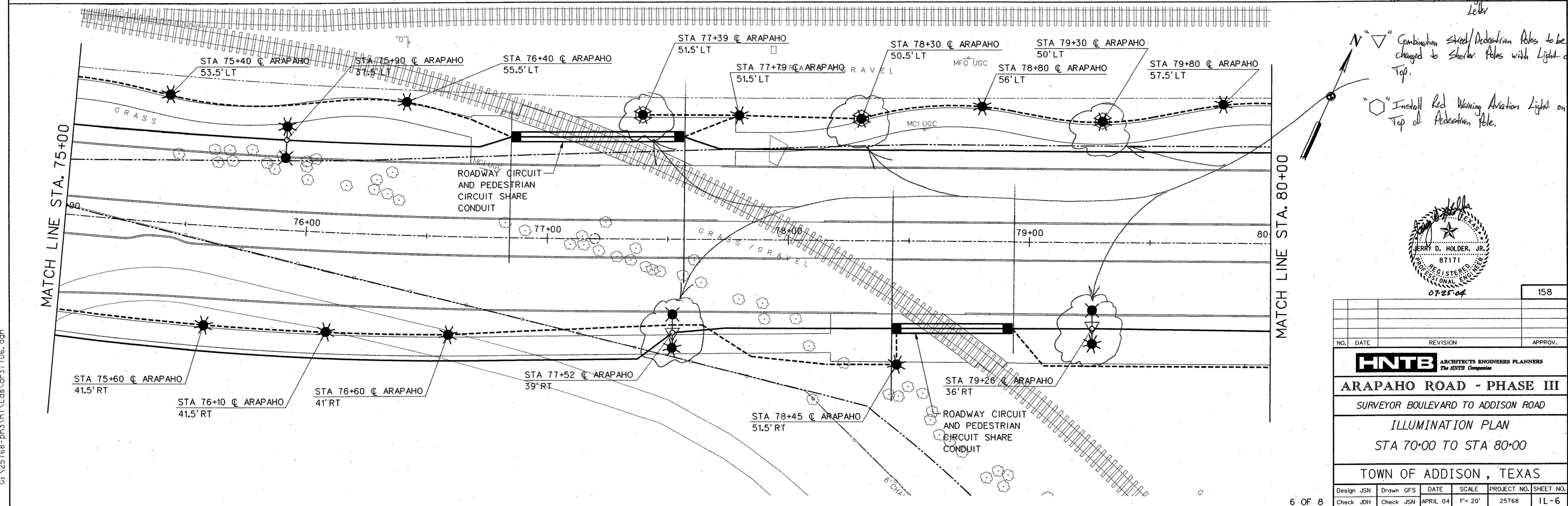


- LEGEND:**
- 4" SCH 40 PVC CONDUIT, BORED UNDER RAILROAD TRACK
  - STREET LIGHTING STANDARD, SEE NOTE 1
  - PEDESTRIAN LIGHTING STANDARD
  - COMBINATION STREET LIGHT STANDARD AND PEDESTRIAN LUMINAIRE
  - CONDUIT, 2" SCH 40 PVC W/2#6, 1#6 GND (ROADWAY CIRCUIT)
  - CONDUIT, 2" SCH 40 PVC W/2#6, 1#6 GND (PEDESTRIAN CIRCUIT)
  - GROUND MOUNTED PULLBOX, TYPE A

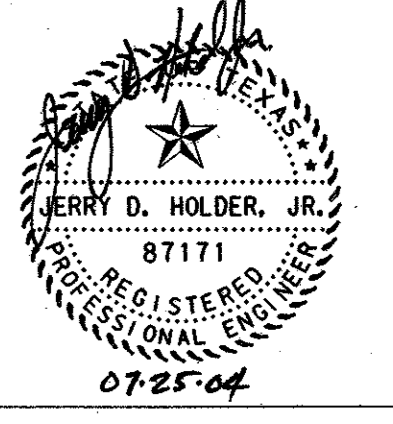
- NOTES:**
1. CONTRACTOR TO INSTALL POLE FOUNDATIONS, CONDUIT, CIRCUIT CONDUCTORS AND STREET LIGHTING STANDARDS.
  2. SEE SPECIFICATIONS FOR TOWN OF ADDISON LIGHTING DETAILS.



See Additional Aviation Lights At Vertical Obstructions Letter

Combination Street/Pedestrian Poles to be changed to Shoulder Poles with Light on Top.

Install Red Warning Aviation Light on Top of Pedestrian Pole.



NO.		DATE	REVISION	APPROV.
158				
<b>HNTB</b> ARCHITECTS ENGINEERS PLANNERS The HNTB Companies				
<b>ARAPAHO ROAD - PHASE III</b>				
SURVEYOR BOULEVARD TO ADDISON ROAD				
ILLUMINATION PLAN				
STA 70+00 TO STA 80+00				
TOWN OF ADDISON, TEXAS				
Design JSN	Drawn GFS	DATE	SCALE	PROJECT NO. SHEET NO.
Check JQH	Check JSN	APRIL 04	1" = 20'	25768 1L-6

29-JUN-2004 13:02  
G:\25768-PI3\N1\CDAS\or31106.dgn