

STREET LIGHT FOUNDATION NOTES:

1. CONCRETE TO BE A MINIMUM 3000 PSI AT 28 DAYS. MAXIMUM AGGREGATE 3/4". TOP OF FOUNDATION TO BE TROWELED TO A FLAT AND LEVEL SURFACE. AVOID EXCESSIVE TROWELING. CONCRETE TO SET A MINIMUM OF 72 HOURS BEFORE POLE INSTALLATION.

2. REBAR HOOPS ARE TIED BEGINNING 3" BELOW TOP OF CONCRETE FORM AND REPEATED AT APPROXIMATE 1 FT. INTERVALS TO BOTTOM OF FOUNDATION.

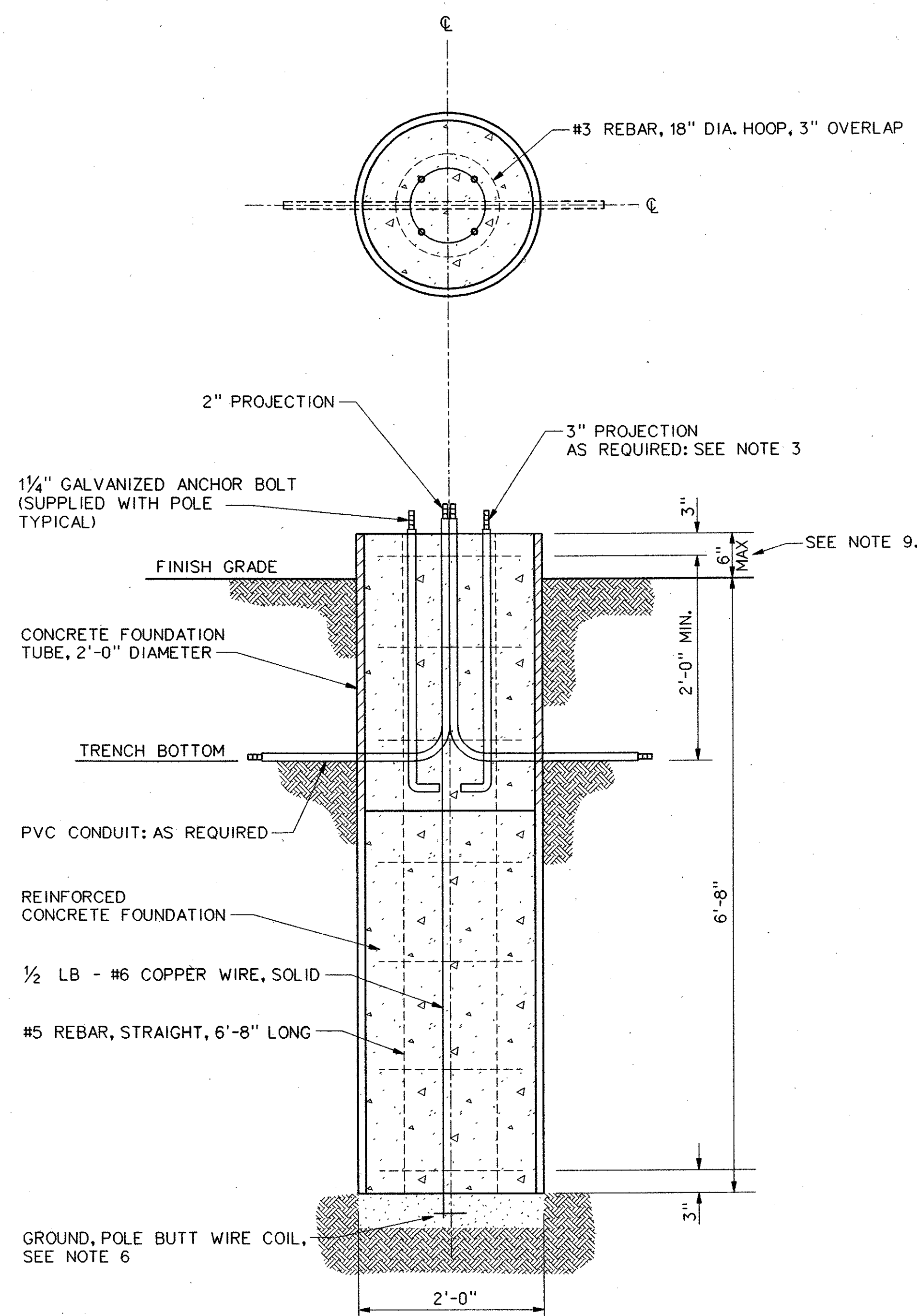
3. ANCHOR BOLTS AND BOLT CIRCLE PER MANUFACTURER SPECIFICATIONS.

4. CONCRETE FORM OF SONOTUBE TO EXTEND TO BOTTOM OF TRENCH OR AS NEEDED.

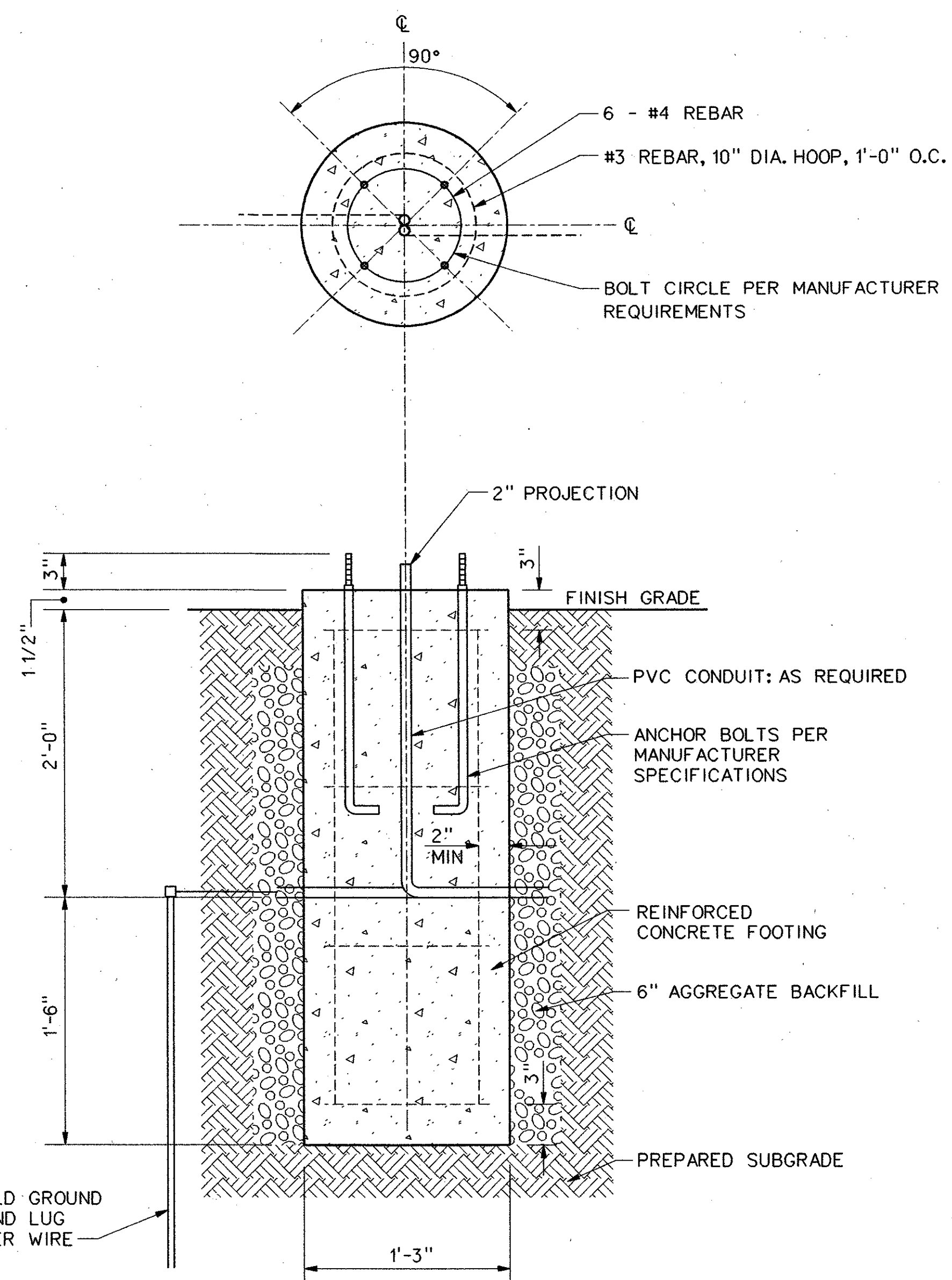
5. PROVIDE 2'-0" PIGTALE FOR CONNECTION OF GROUND WIRE TO POLE

6. A MINIMUM OF 12" OF BARE #6 SD CU WIRE TO BE PLACED IN BOTTOM OF HOLE AND COVERED WITH 2" OF DIRT.

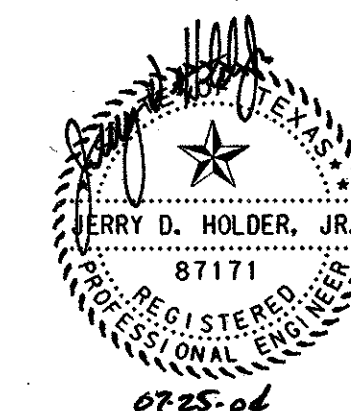
7. IF SOIL HAS BEEN DISTURBED, EXTEND FOUNDATION BY DEPTH OF DISTURBED SOIL.



STREET LIGHT FOUNDATION DETAIL
NOT TO SCALE



PEDESTRIAN LIGHT FOUNDATION DETAIL
NOT TO SCALE



				162A
NO.	DATE	REVISION	APPROV.	
HNTB ARCHITECTS ENGINEERS PLANNERS <i>The HNTB Companies</i>				
ARAPAHO ROAD - PHASE III				
SURVEYOR BOULEVARD TO ADDISON ROAD				
LIGHT POLE FOUNDATION DETAILS				
TOWN OF ADDISON, TEXAS				
Design JSN	Drawn GFS	DATE	SCALE	PROJECT NO. SHEET NO.
Check JDH	Check JSN	APRIL 04	NTS	25768 IL-11