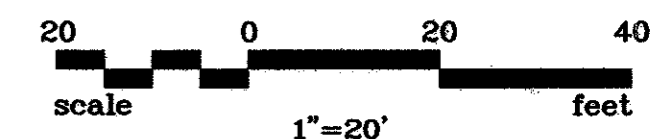


NO.	DATE	REVISION	APPROV.
1	06/28/04	REVISED PER G & A	A.K.C.
2			
3			

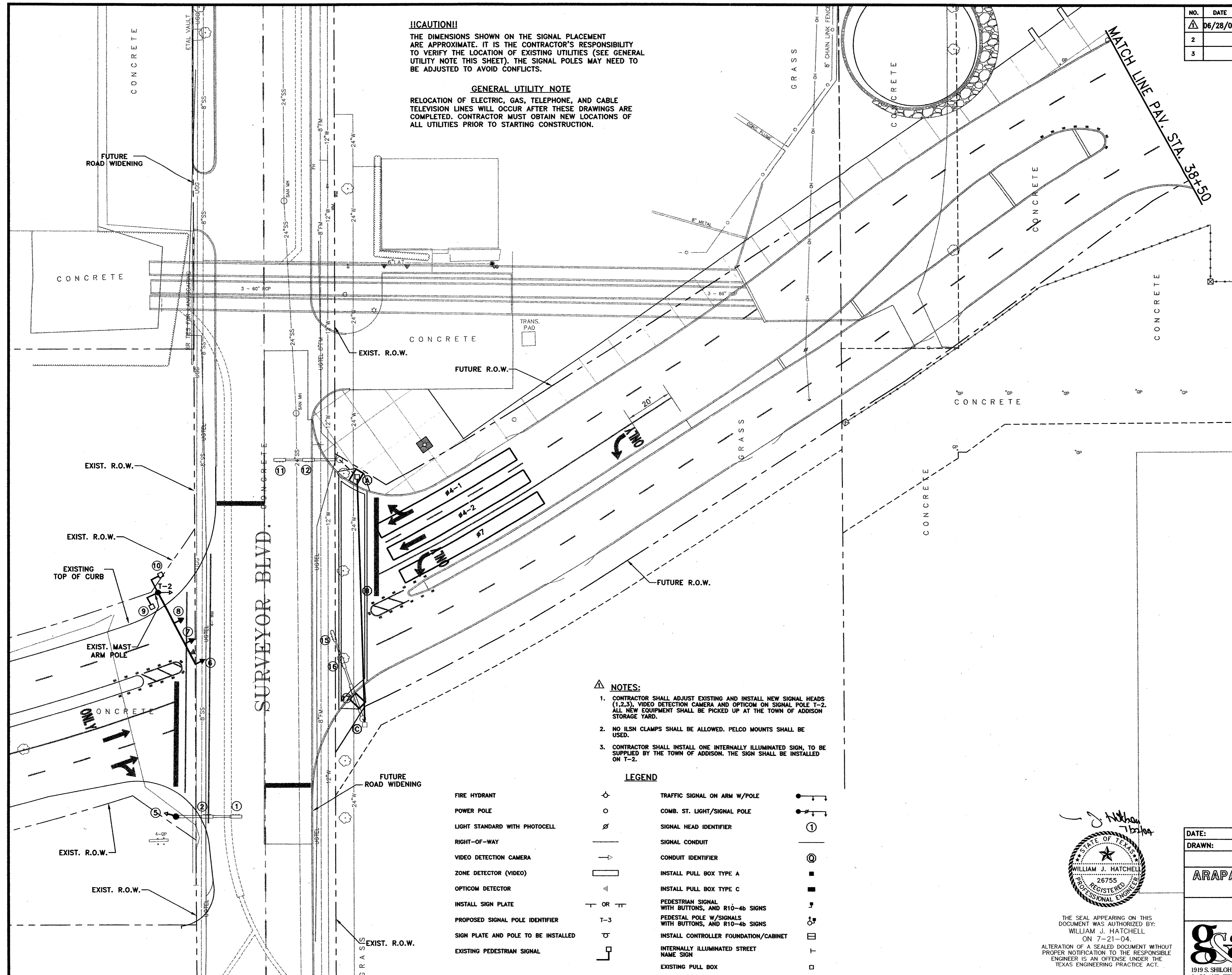


GENERAL TRAFFIC NOTE:

1. ALL WORK SHALL BE PERFORMED IN ACCORDANCE WITH TOWN OF ADDISON AND TXDOT STANDARDS AND SPECIFICATIONS. IN THE EVENT OF A CONFLICT, TOWN OF ADDISON STANDARDS SHALL GOVERN.
2. ALL TRAFFIC SIGNAL WORK SHALL BE BID UNDER THE LUMP SUM BID ITEMS.

!!CAUTION!!
 THE DIMENSIONS SHOWN ON THE SIGNAL PLACEMENT ARE APPROXIMATE. IT IS THE CONTRACTOR'S RESPONSIBILITY TO VERIFY THE LOCATION OF EXISTING UTILITIES (SEE GENERAL UTILITY NOTE THIS SHEET). THE SIGNAL POLES MAY NEED TO BE ADJUSTED TO AVOID CONFLICTS.

GENERAL UTILITY NOTE
 RELOCATION OF ELECTRIC, GAS, TELEPHONE, AND CABLE TELEVISION LINES WILL OCCUR AFTER THESE DRAWINGS ARE COMPLETED. CONTRACTOR MUST OBTAIN NEW LOCATIONS OF ALL UTILITIES PRIOR TO STARTING CONSTRUCTION.

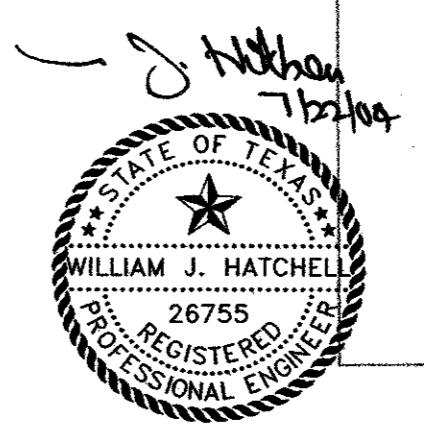


NOTES:

1. CONTRACTOR SHALL ADJUST EXISTING AND INSTALL NEW SIGNAL HEADS (1,2,3), VIDEO DETECTION CAMERA AND OPTICOM ON SIGNAL POLE T-2. ALL NEW EQUIPMENT SHALL BE PICKED UP AT THE TOWN OF ADDISON STORAGE YARD.
2. NO ILSN CLAMPS SHALL BE ALLOWED. PELCO MOUNTS SHALL BE USED.
3. CONTRACTOR SHALL INSTALL ONE INTERNALLY ILLUMINATED SIGN, TO BE SUPPLIED BY THE TOWN OF ADDISON. THE SIGN SHALL BE INSTALLED ON T-2.

LEGEND

FIRE HYDRANT		TRAFFIC SIGNAL ON ARM W/POLE	
POWER POLE		COMB. ST. LIGHT/SIGNAL POLE	
LIGHT STANDARD WITH PHOTOCELL		SIGNAL HEAD IDENTIFIER	
RIGHT-OF-WAY		SIGNAL CONDUIT	
VIDEO DETECTION CAMERA		CONDUIT IDENTIFIER	
ZONE DETECTOR (VIDEO)		INSTALL PULL BOX TYPE A	
OPTICOM DETECTOR		INSTALL PULL BOX TYPE C	
INSTALL SIGN PLATE		PEDESTRIAN SIGNAL WITH BUTTONS, AND R10-4b SIGNS	
PROPOSED SIGNAL POLE IDENTIFIER		PEDESTAL POLE W/SIGNALS WITH BUTTONS, AND R10-4b SIGNS	
SIGN PLATE AND POLE TO BE INSTALLED		INSTALL CONTROLLER FOUNDATION/CABINET	
EXISTING PEDESTRIAN SIGNAL		INTERNALLY ILLUMINATED STREET NAME SIGN	
		EXISTING PULL BOX	



THE SEAL APPEARING ON THIS DOCUMENT WAS AUTHORIZED BY: WILLIAM J. HATCHELL ON 7-21-04. ALTERATION OF A SEALED DOCUMENT WITHOUT PROPER NOTIFICATION TO THE RESPONSIBLE ENGINEER IS AN OFFENSE UNDER THE TEXAS ENGINEERING PRACTICE ACT.

DATE:	MAY 2004	SCALE:	1"=20'	JOB NO.:	02-320
DRAWN:	G&A	DESIGN:	WJH	REVIEWED:	DWG: 320SIGNAL01.DWG

**ARAPAHO ROAD PHASE III
 ARAPAHO ROAD AT SURVEYOR BOULEVARD
 TRAFFIC SIGNAL PLAN**

TOWN OF ADDISON

g&a Grantham & Associates, Inc. SHT. TS-1

1919 S. SHILOH ROAD, SUITE 310, L.B. 8 GARLAND, TEXAS 75042 (972) 864-2333 (TEL) (972) 864-2334 (FAX)