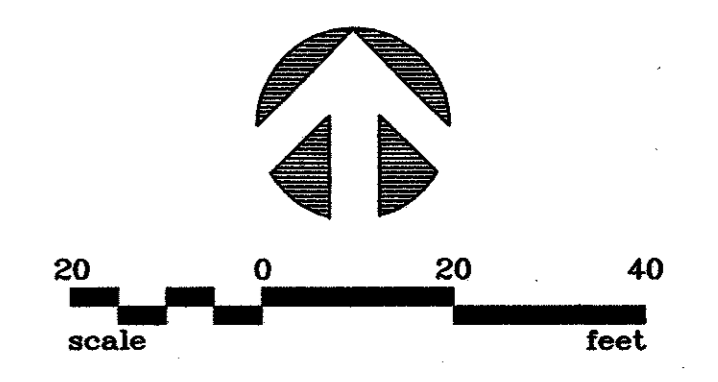


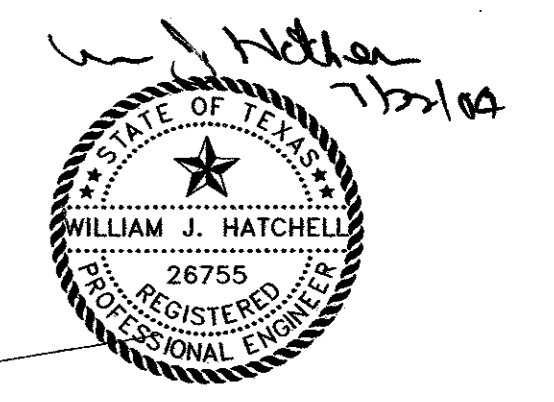
NO.	DATE	REVISION	APPROV.
1			
2			
3			



**!!CAUTION!!**  
 THE DIMENSIONS SHOWN ON THE SIGNAL PLACEMENT ARE APPROXIMATE. IT IS THE CONTRACTOR'S RESPONSIBILITY TO VERIFY THE LOCATION OF EXISTING UTILITIES (SEE GENERAL UTILITY NOTE THIS SHEET). THE SIGNAL POLES MAY NEED TO BE ADJUSTED TO AVOID CONFLICTS.

**GENERAL UTILITY NOTE**  
 RELOCATION OF ELECTRIC, GAS, TELEPHONE, AND CABLE TELEVISION LINES WILL OCCUR AFTER THESE DRAWINGS ARE COMPLETED. CONTRACTOR MUST OBTAIN NEW LOCATIONS OF ALL UTILITIES PRIOR TO STARTING CONSTRUCTION.

EXISTING (PHASING CHANGES ONLY)



THE SEAL APPEARING ON THIS DOCUMENT WAS AUTHORIZED BY: WILLIAM J. HATCHELL ON 7-14-04. ALTERATION OF A SEALED DOCUMENT WITHOUT PROPER NOTIFICATION TO THE RESPONSIBLE ENGINEER IS AN OFFENSE UNDER THE TEXAS ENGINEERING PRACTICE ACT.

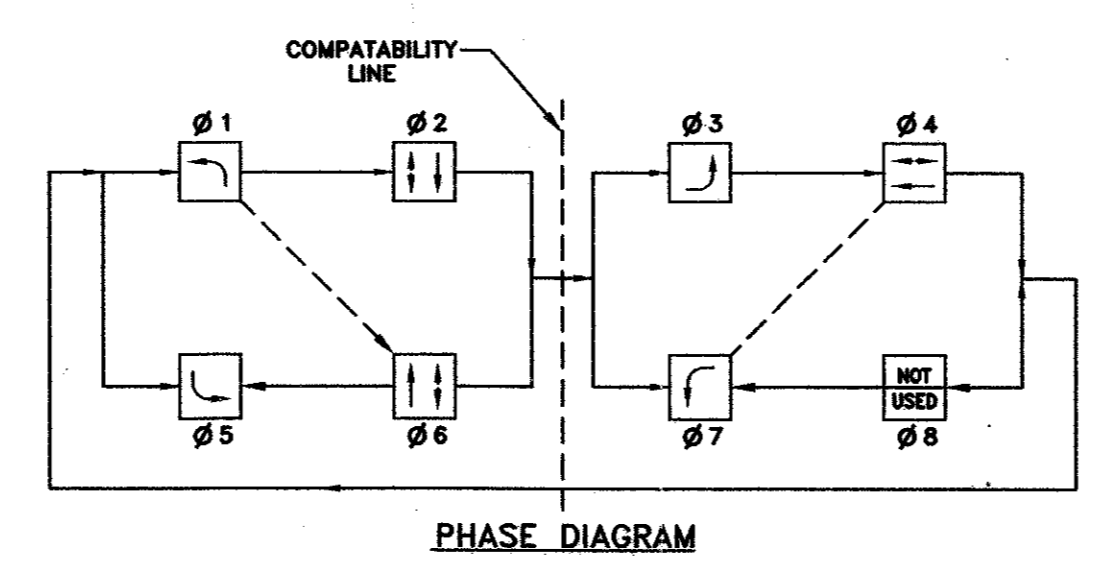
**LEGEND**

FIRE HYDRANT	⊙	TRAFFIC SIGNAL ON ARM W/POLE	⊕
POWER POLE	○	COMB. ST. LIGHT/SIGNAL POLE	⊕
LIGHT STANDARD WITH PHOTOCELL	⊙	SIGNAL HEAD IDENTIFIER	①
RIGHT-OF-WAY	—	SIGNAL CONDUIT	—
VIDEO DETECTION CAMERA	⊙	CONDUIT IDENTIFIER	⊙
ZONE DETECTOR (VIDEO)	⊙	INSTALL PULL BOX TYPE A	■
OPTICOM DETECTOR	⊙	INSTALL PULL BOX TYPE C	■
INSTALL SIGN PLATE	—	PEDESTRIAN SIGNAL WITH BUTTONS, AND R10-4b SIGNS	⊕
PROPOSED SIGNAL POLE IDENTIFIER	T-3	PEDESTAL POLE W/SIGNALS WITH BUTTONS, AND R10-4b SIGNS	⊕
SIGN PLATE AND POLE TO BE INSTALLED	⊕	INSTALL CONTROLLER FOUNDATION/CABINET	⊕
EXISTING CONDUIT	---	INTERNALLY ILLUMINATED STREET NAME SIGN	⊕
EXISTING TRAFFIC SIGNAL	⊕	EXISTING PULL BOX	□
EXISTING PEDESTRIAN SIGNAL	⊕		

**GENERAL TRAFFIC NOTE:**

- ALL WORK SHALL BE PERFORMED IN ACCORDANCE WITH TOWN OF ADDISON AND TXDOT STANDARDS AND SPECIFICATIONS. IN THE EVENT OF A CONFLICT, TOWN OF ADDISON STANDARDS SHALL GOVERN.
- ALL TRAFFIC SIGNAL WORK SHALL BE BID UNDER THE LUMP SUM BID ITEMS.

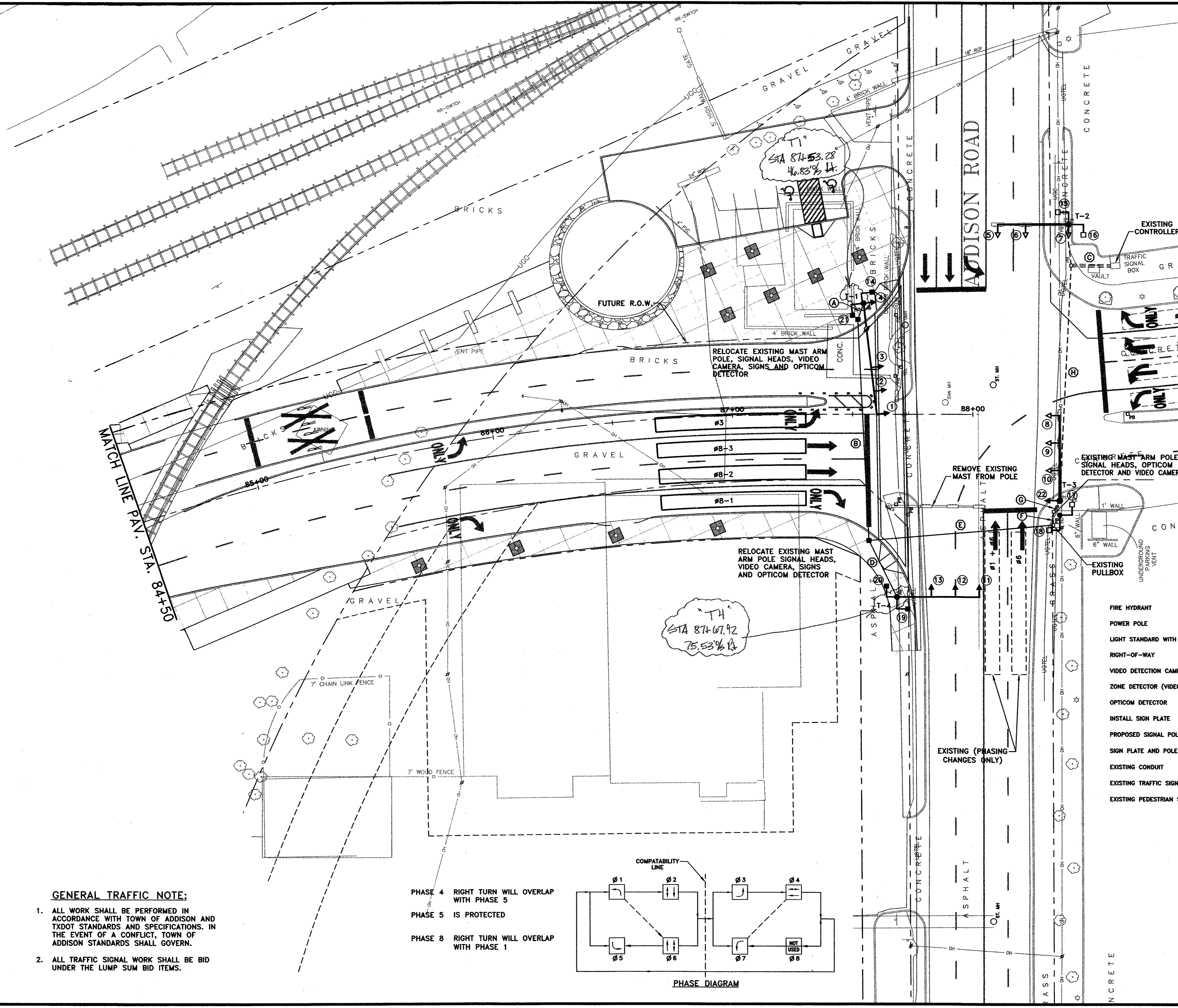
- PHASE 4 RIGHT TURN WILL OVERLAP WITH PHASE 5  
 PHASE 5 IS PROTECTED  
 PHASE 8 RIGHT TURN WILL OVERLAP WITH PHASE 1



MATCH LINE PAV. STA. 84+50

ADDISON ROAD

CONCRETE



DATE:	MAY 2004	SCALE:	1"=20'	JOB NO.:	02-320
DRAWN:	G&A	DESIGN:	WJH	REVIEWED:	DWG: 320SIGNAL02.DWG

**ARAPAHO ROAD PHASE III  
 ARAPAHO ROAD AT ADDISON ROAD  
 TRAFFIC SIGNAL PLAN**

**TOWN OF ADDISON**

**g&a** Grantham & Associates, Inc. SHT. TS-3

1919 S. SHILOH ROAD, SUITE 310, L.B. 8 GARLAND, TEXAS 75042 (972) 864-2333 (TEL) (972) 864-2334 (FAX)