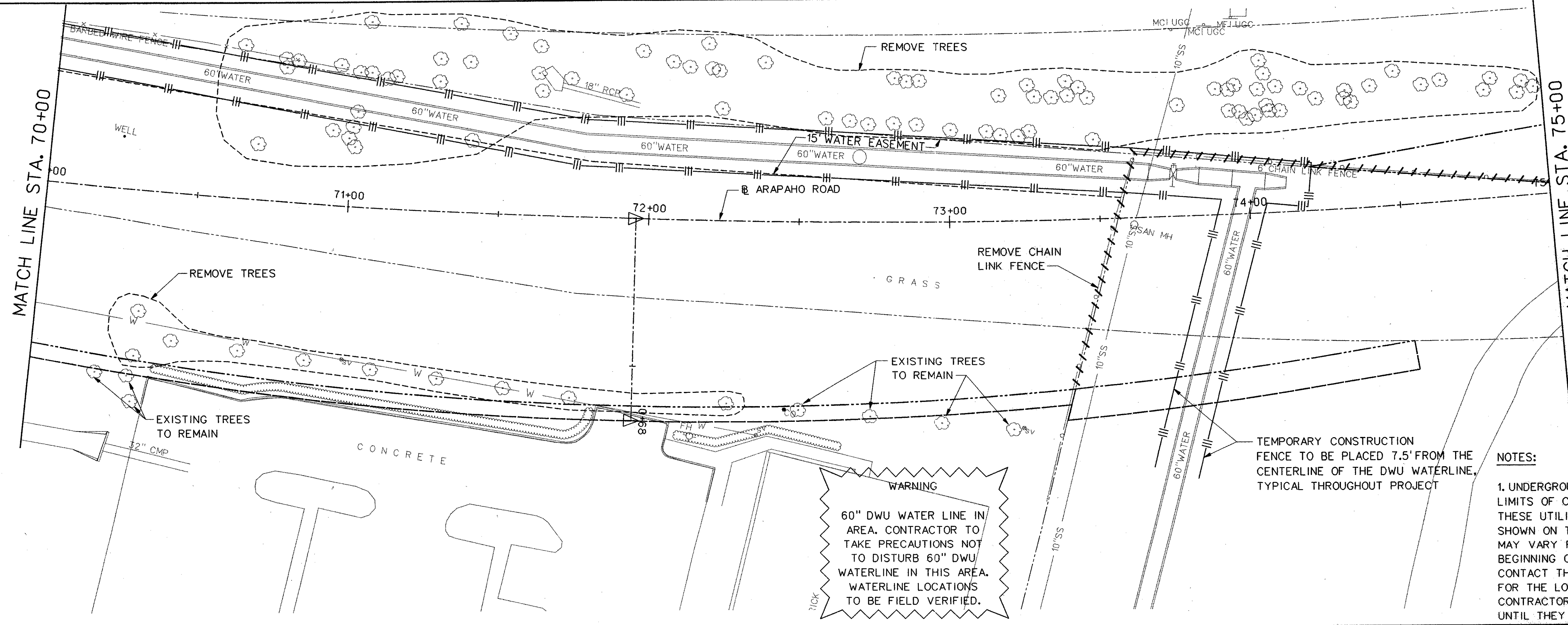
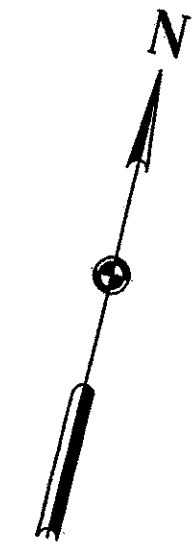




SCALE IN FEET

LEGEND

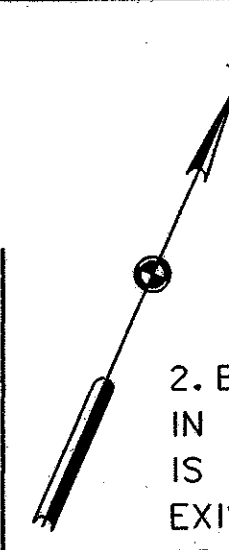
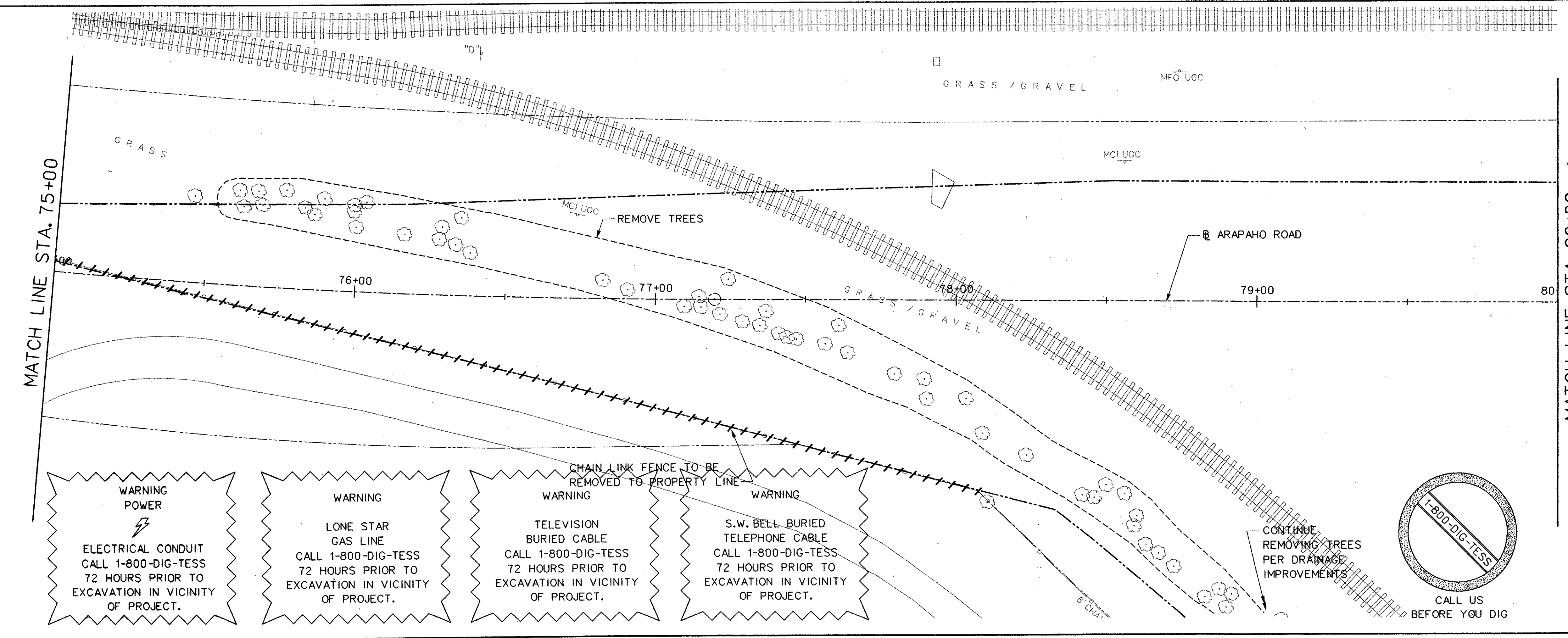
- PAVEMENT REMOVAL
- BRIDGE REMOVAL
- GRAVEL REMOVAL
- SIDEWALK REMOVAL
- CONCRETE CHANNEL REMOVAL
- PROPOSED
- ROW
- TEMPORARY CONSTRUCTION EASEMENT
- EXISTING EASEMENT
- TEMPORARY CONSTRUCTION FENCE
- FENCE REMOVAL



**WARNING**  
60" DWU WATER LINE IN AREA. CONTRACTOR TO TAKE PRECAUTIONS NOT TO DISTURB 60" DWU WATERLINE IN THIS AREA. WATERLINE LOCATIONS TO BE FIELD VERIFIED.

NOTES:

1. UNDERGROUND UTILITIES EXIST WITHIN AND ADJACENT TO THE LIMITS OF CONSTRUCTION. AN ATTEMPT HAS BEEN MADE TO LOCATE THESE UTILITIES ON THE PLANS. ALL EXISTING UTILITIES MAY NOT BE SHOWN ON THE PLANS, AND THE LOCATION OF THE UTILITIES SHOWN MAY VARY FROM THE LOCATION ON THE PLANS. PRIOR TO THE BEGINNING OF ANY TYPE OF EXCAVATION, THE CONTRACTOR SHALL CONTACT THE UTILITIES INVOLVED AND MAKE ARRANGEMENTS FOR THE LOCATION OF THE UTILITY ON THE GROUND. THE CONTRACTOR SHALL MAINTAIN THE UTILITY LOCATION MARKINGS UNTIL THEY ARE NO LONGER NECESSARY.

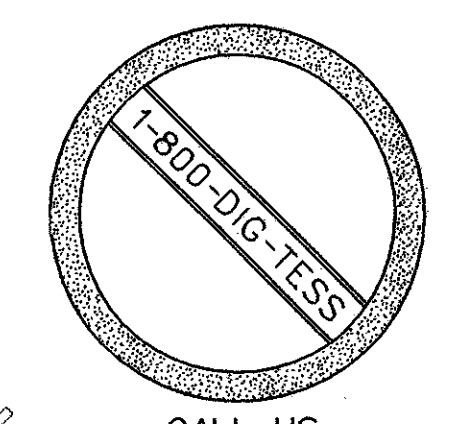


2. BETWEEN STATION 78+20 AND 86+50 AND WITHIN THE LIMITS OF CONSTRUCTION, THE CONTRACTOR IS TO REMOVE A MINIMUM OF 4- FEET BELOW EXISTING GRADE TO REMOVE MISC BRICK AND GRAVEL, SEE SOILS REPORT FOR BORINGS IN THIS AREA. CONTRACTOR TO BRING IN TxDOT TYPE A GRADE II FILL OR APPROVED EQUAL. CONTRACTOR TO TAKE PRECAUTIONS NOT TO DISTURB RAILROAD SPUR AS A PART OF THIS EXCAVATION.



|                                                                                                                                           |           |          |               |
|-------------------------------------------------------------------------------------------------------------------------------------------|-----------|----------|---------------|
| NO.                                                                                                                                       | DATE      | REVISION | APPROV.       |
|                                                                                                                                           |           |          |               |
| <b>HNTB</b> ARCHITECTS ENGINEERS PLANNERS<br>The HNTB Companies                                                                           |           |          | 25            |
| <b>ARAPAHO ROAD - PHASE III</b><br>SURVEYOR BOULEVARD TO ADDISON ROAD<br>REMOVAL PLAN<br>STA 70+00 TO STA 80+00<br>TOWN OF ADDISON, TEXAS |           |          |               |
| Design JSN                                                                                                                                | Drawn GFS | DATE     | SCALE         |
| Check JDH                                                                                                                                 | Check JSN | APRIL 04 | 1" = 20'      |
| PROJECT NO. 25768                                                                                                                         |           |          | SHEET NO. R-6 |

- WARNING**  
ELECTRICAL CONDUIT  
CALL 1-800-DIG-TESS  
72 HOURS PRIOR TO EXCAVATION IN VICINITY OF PROJECT.
- WARNING**  
LONE STAR GAS LINE  
CALL 1-800-DIG-TESS  
72 HOURS PRIOR TO EXCAVATION IN VICINITY OF PROJECT.
- WARNING**  
TELEVISION BURIED CABLE  
CALL 1-800-DIG-TESS  
72 HOURS PRIOR TO EXCAVATION IN VICINITY OF PROJECT.
- WARNING**  
S.W. BELL BURIED TELEPHONE CABLE  
CALL 1-800-DIG-TESS  
72 HOURS PRIOR TO EXCAVATION IN VICINITY OF PROJECT.



29-JUN-2004 12:14 G:\25768-ph3\h1\Cas\ar3rem06.dgn