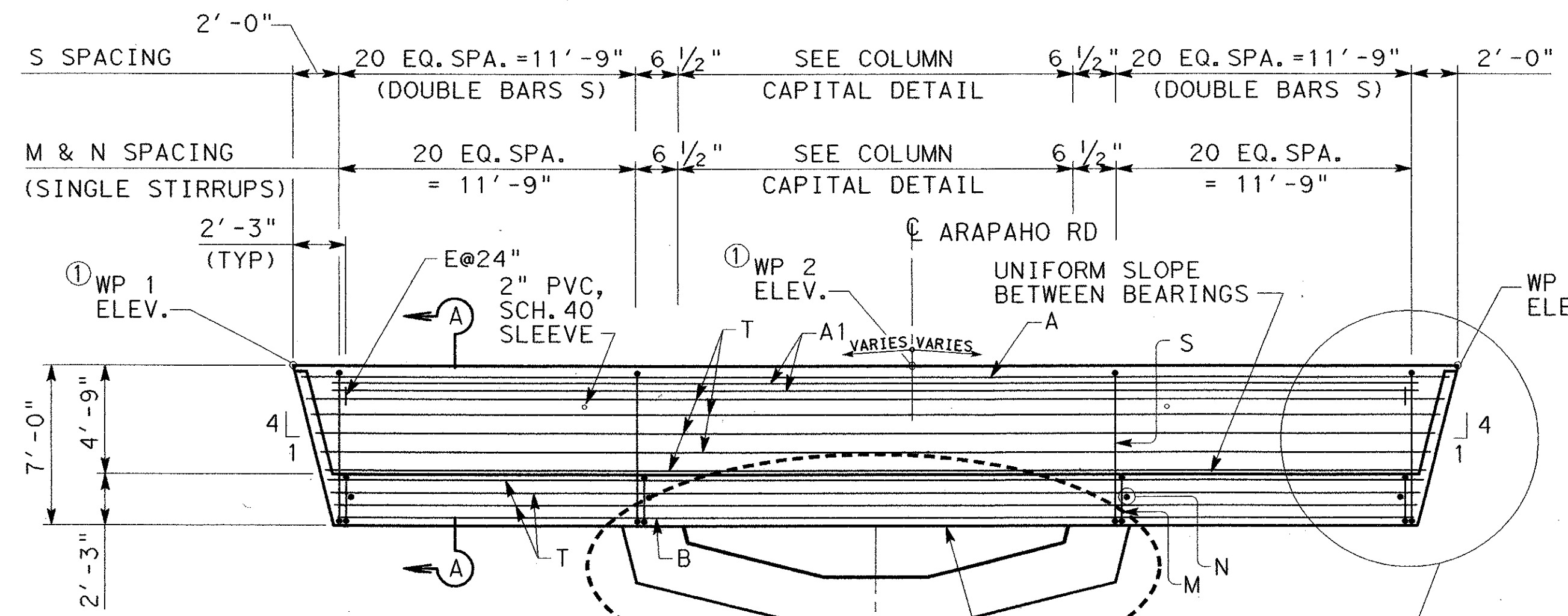


PLAN

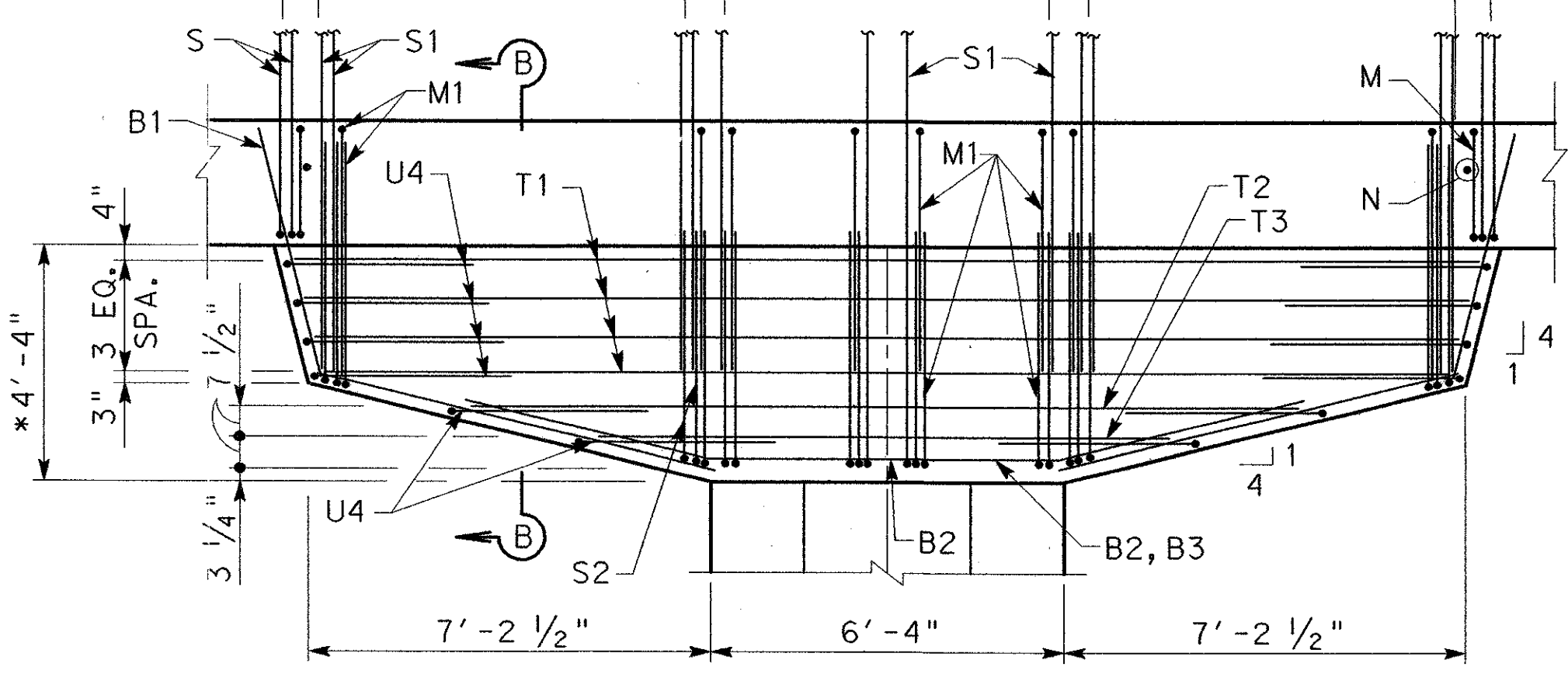
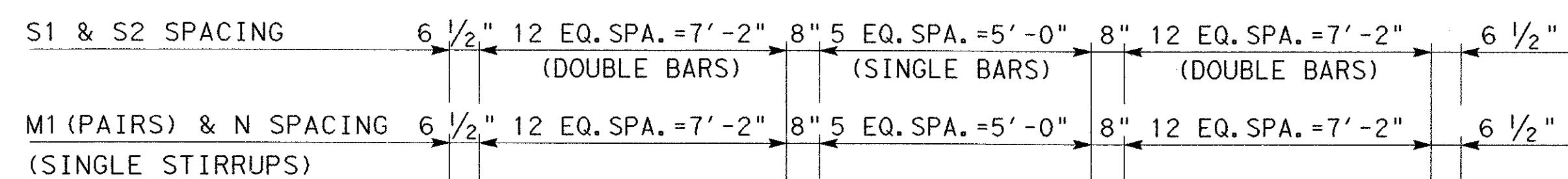
SEE "FRAMING PLAN" FOR BEAM ANGLES ~ TYPICAL

ALL BUILD-UPS GREATER THAN 3" SHALL HAVE REINF. STEEL. SEE UBB STANDARD FOR BEARING SEAT BUILD-UPS

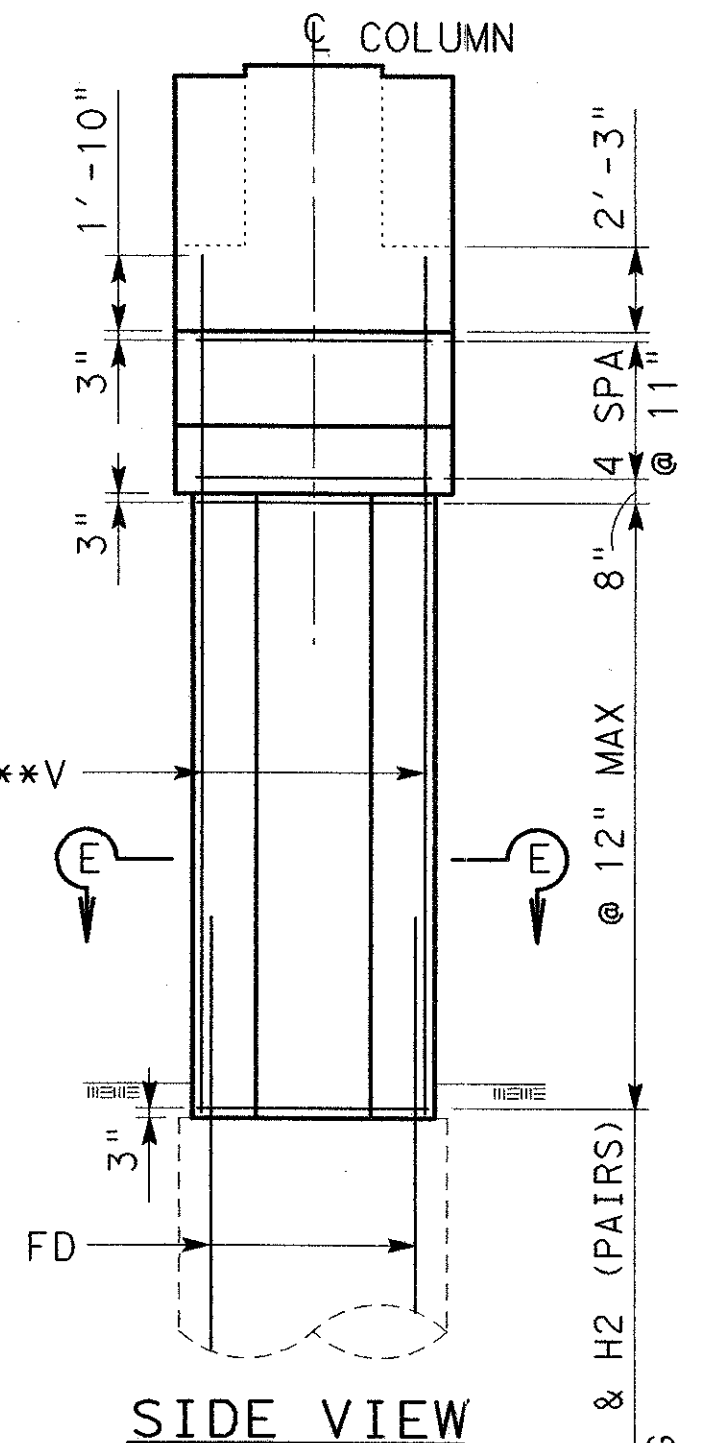


ELEVATION

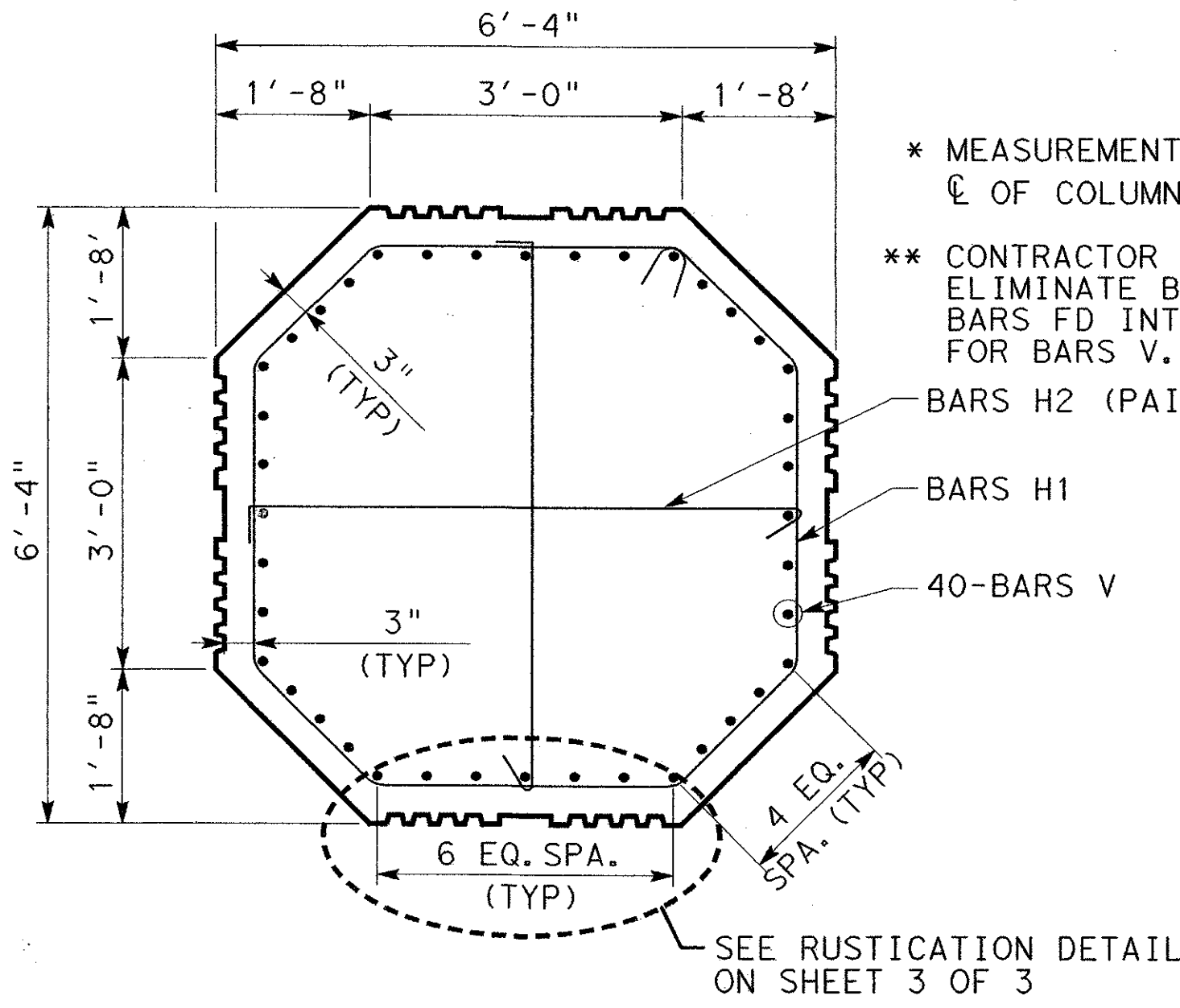
- ① SEE SHEET 2 OF 3 FOR TABLE OF WORK POINT ELEVATIONS.
- ② 2" PVC, SCH. 40 SLEEVE BENTS 2-8, 11-13 ONLY.
- ③ 2" PVC, SCH. 40 SLEEVE BENTS 8 & 11-13 ONLY.



COLUMN CAPITAL DETAIL



SIDE VIEW



SECTION E-E

- * MEASUREMENT AT THE \bar{C} OF COLUMN
- ** CONTRACTOR HAS THE OPTION TO ELIMINATE BARS V BY EXTENDING BARS FD INTO THE CAP AS REQUIRED FOR BARS V.

BENT	COLUMN HEIGHT "H" (FT)	TABLE OF COLUMN QUANTITIES										TOTAL ESTIMATED QUANTITIES (COLUMN & CAP)		
		BAR V (#11)		BARS H1 (#4) 20'-6"		BARS H2 (#4) 7'-0"		BARS FD (#11) 17'-10"		CLASS "F" CONCRETE	SUB-TOTAL REINF STEEL	CLASS "F" CONCRETE	REINF STEEL	
		No.	Length	(lbs)	No.	(lbs)	No.	(lbs)	No.	(lbs)	(CY)	(lbs)	(CY)	(lbs)
2	5'-0"	40	10'-11"	2,320	11	151	22	103	40	3,790	6.4	6,363	86.3	27,434
3	7'-0"	40	12'-11"	2,745	13	178	26	122	40	3,790	9.0	6,835	88.9	27,906
4	9'-6"	40	15'-5"	3,276	15	205	30	140	40	3,790	12.2	7,412	92.1	28,458
5	12'-6"	40	18'-5"	3,914	18	246	36	168	40	3,790	16.0	8,119	95.9	29,190
6	14'-6"	40	20'-5"	4,339	20	274	40	187	40	3,790	18.6	8,590	98.5	29,661
7	16'-0"	40	21'-11"	4,658	22	301	44	206	40	3,790	20.5	8,955	100.4	30,001
8	16'-0"	40	21'-11"	4,658	22	301	44	206	40	3,790	20.5	8,955	100.4	30,026
11	15'-0"	40	20'-11"	4,445	21	288	42	196	40	3,790	19.2	8,719	99.1	29,790
12	12'-6"	40	18'-5"	3,914	18	246	36	168	40	3,790	16.0	8,119	95.9	29,165
13	9'-0"	40	14'-11"	3,170	15	205	30	140	40	3,790	11.5	7,306	91.5	28,377
14	6'-6"	40	12'-5"	2,639	12	164	24	112	40	3,790	8.3	6,705	88.3	27,776

GENERAL NOTES:

1. DESIGNED IN ACCORDANCE WITH "STANDARD SPECIFICATIONS FOR HIGHWAY BRIDGES", 16TH EDITION 1996, WITH CURRENT INTERIM SPECIFICATIONS.
2. REFER TO UBA, UBB, UBNs STANDARD FOR BEAM AND BEARING PAD DETAILS.
3. REINFORCING STEEL QUANTITY IS FOR CONTRACTOR'S INFORMATION ONLY.
4. ALL BAR DIMENSIONS ARE GIVEN TO \bar{C} BARS. CLEAR CONCRETE COVER SHALL BE 2 INCHES UNLESS NOTED OTHERWISE.
5. FOR LIMITS AND COLOR OF PAINT SYSTEM, SEE PAINT DETAIL AND SURFACE FINISHES FOR STRUCTURES STANDARD DRAWING
6. CLASS "F" CONCRETE STRENGTH $f'c=5000$ psi.
7. ALL REINFORCING STEEL SHALL BE GRADE 60.
8. REFER TO FOUNDATION DETAIL SHEET FOR FOUNDATION DETAILS AND NOTES.
9. FORM STRAIGHT LINES BETWEEN ELEVATIONS SHOWN. BOTTOM OF CAP SHALL BE PARALLEL TO TOP OF CAP.
10. U-BEAM SPACING AT TOP OF BEAM MAY VARY FROM FRAMING PLAN DUE TO VARYING BEAM CROSS-SLOPES.



NO.	DATE	REVISION	APPROV.
URS			
GREYSTONE CENTRE 5010 LBJ FREEWAY, SUITE 1500 DALLAS, TX 75234			
ARAPAHO ROAD - PHASE III			
SURVEYOR BOULEVARD TO ADDISON ROAD			
BENTS 2 - 8 & 11 - 14 DETAILS			
SHEET 1 OF 3			
TOWN OF ADDISON, TEXAS			
Design	Drawn	DATE	SCALE
Check	Check	05-07-04	25768
PROJECT NO.	SHEET NO.		
25768	BR-18		

7/2/2004 10:32:57 AM

I:\urssd\del\data\projects\arapaho_road_bridges\ecadd\structures\bents and abutments\ar-3\brd02a.dgn