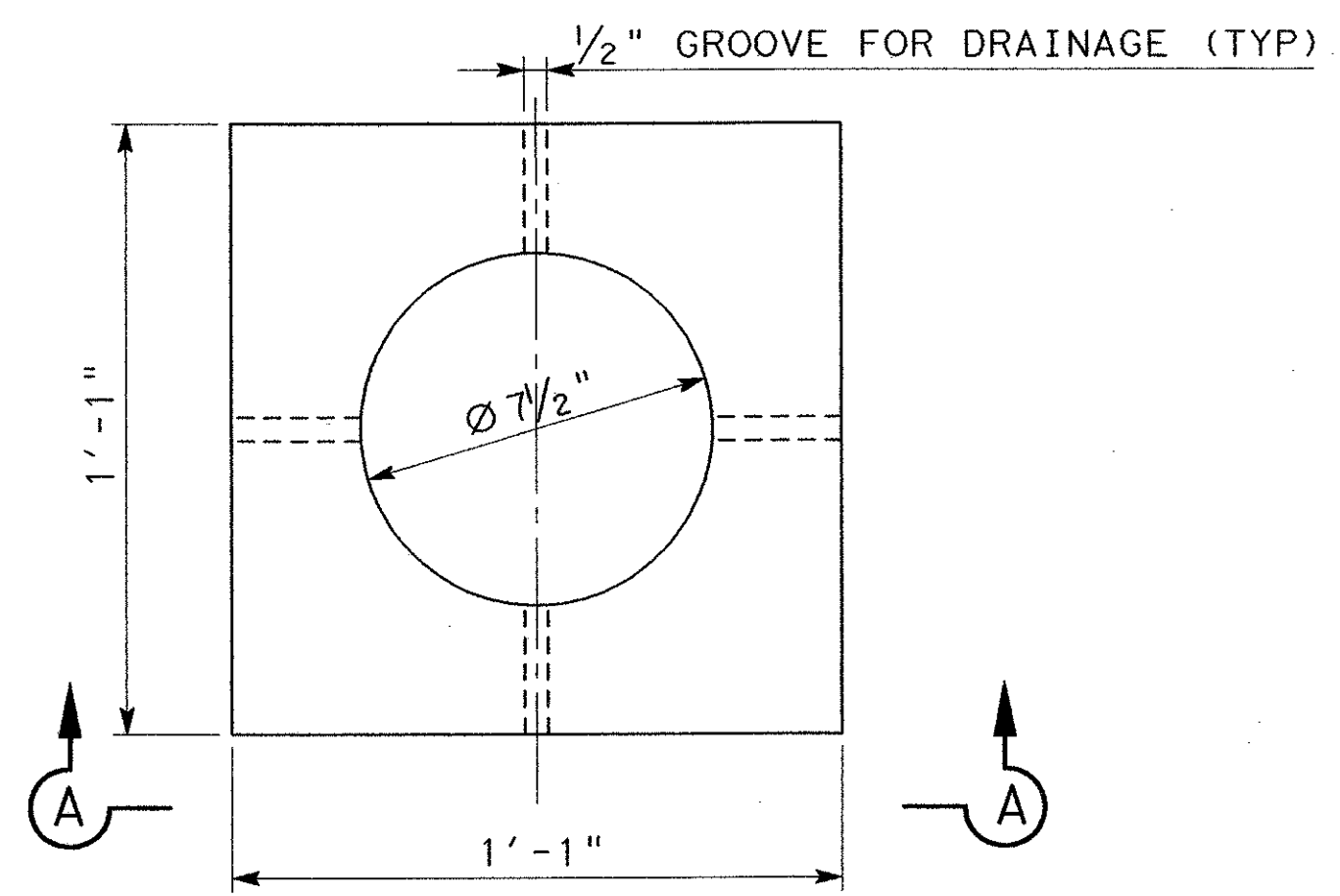
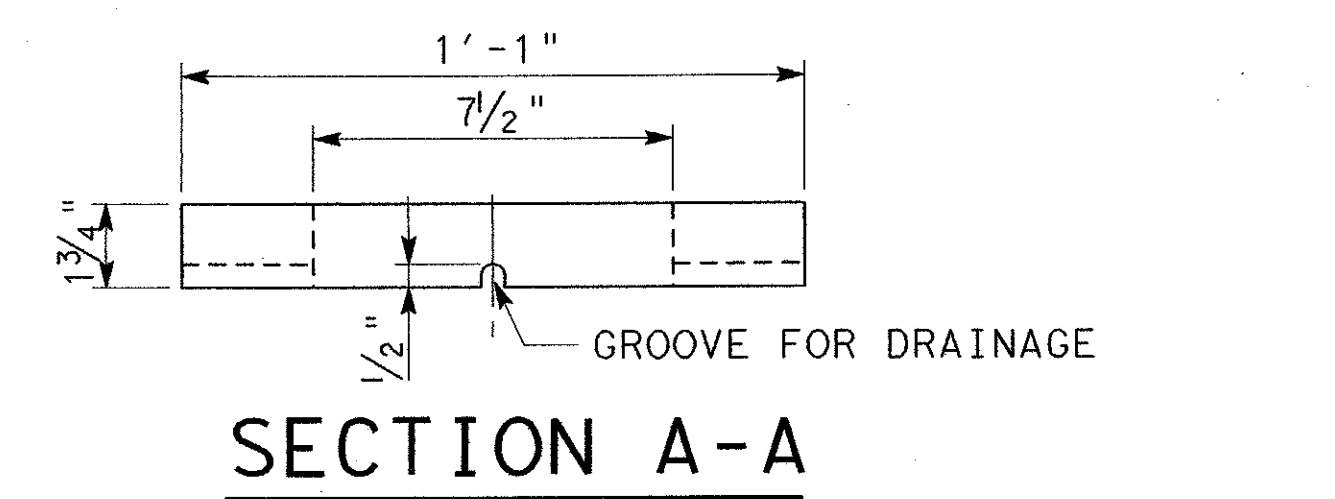


TRANSVERSE SECTION AT \odot HANGER
 (HANGERS 1 AND 9 SHOWN LOOKING STATIONS AHEAD- OTHERS ARE SIMILAR)



BEARING PLATE PLAN

NOTES

1. STRUCTURAL STRAND SHALL CONFORM TO ASTM A586, HELICAL STEEL WIRE STRUCTURAL STRAND, CLASS A. THE BREAKING STRENGTH SHALL BE 790 KIPS. MODULUS OF ELASTICITY ASSUMED FOR DESIGN IS 24,000,000 PSI.
2. NEOPRENE BOOT, GUIDE PIPE AND BEARING PLATE SHALL BE INCLUDED IN THE COST OF THE STRUCTURAL STRAND HANGERS.
3. STEEL GUIDE PIPE AND BEARING PLATE SHALL BE GRADE 36 STRUCTURAL STEEL AND GALVANIZED IN ACCORDANCE WITH ASTM A123.
4. BASED ON DISTANCE FROM \odot OF PIN TO BOTTOM OF BEARING PLATE, THERE IS APPROXIMATELY 412' OF STRUCTURAL HANGER REQUIRED.

SPAN NUMBER	HANGERS
9	L. S.

WORKING POINT ELEVATIONS FOR THE ARCH RIBS AND THE DIAPHRAGMS

HANGER	ELEV. (FT) W.P. AT ARCH	ELEV. (FT) W.P. AT DIAPHRAGM
NORTH 1	653.087	643.329
SOUTH 1	653.087	642.663
NORTH 2	660.412	643.404
SOUTH 2	660.412	642.738
NORTH 3	665.650	643.465
SOUTH 3	665.650	642.799
NORTH 4	668.795	643.512
SOUTH 4	668.795	642.846
NORTH 5	669.844	643.546
SOUTH 5	669.844	642.880
NORTH 6	668.795	643.566
SOUTH 6	668.795	642.900
NORTH 7	665.650	643.573
SOUTH 7	665.650	642.907
NORTH 8	660.412	643.566
SOUTH 8	660.412	642.900
NORTH 9	653.087	643.545
SOUTH 9	653.087	642.879



280

NO.	DATE	REVISION	APPROV.

URS GREYSTONE CENTRE
 3010 LBJ FREEWAY, SUITE 1500
 DALLAS, TX 75254

ARAPAHO ROAD - PHASE III
 SURVEYOR BOULEVARD TO ADDISON ROAD

HANGER DETAIL
 UNIT 4

TOWN OF ADDISON, TEXAS

Design	Drawn	RJB	DATE	SCALE	PROJECT NO.	SHEET NO.
Check	Check		05-07-04	NONE	25768	BR-42

12:59:32 PM 6/29/2004

\\urs01\dca\projects\arapaho_road_brlodge\cadd\from_tampa\5-24-04\ar3ma0401.dgn