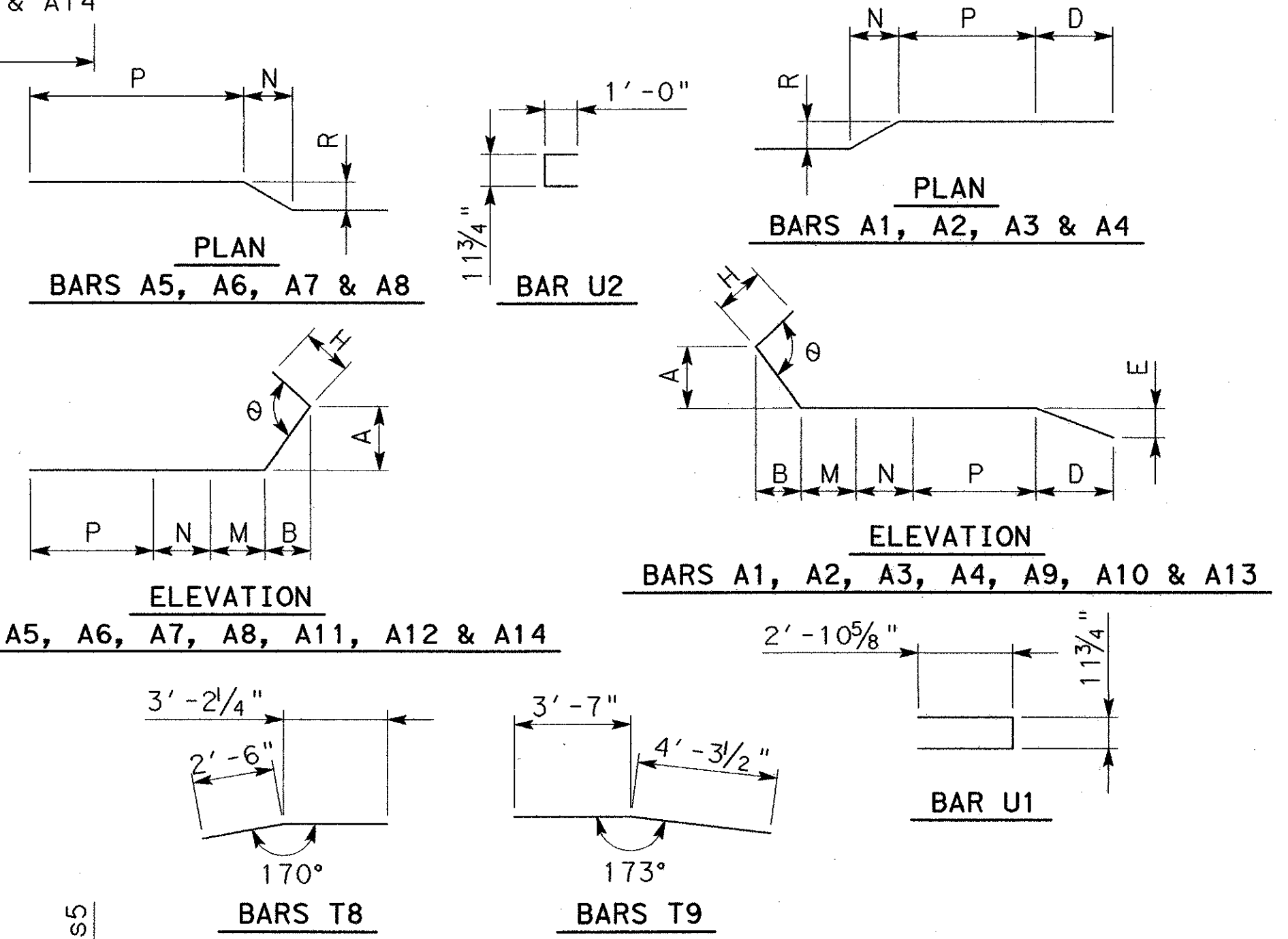


**DRIP DETAIL**  
(TYP BOTH ENDS)

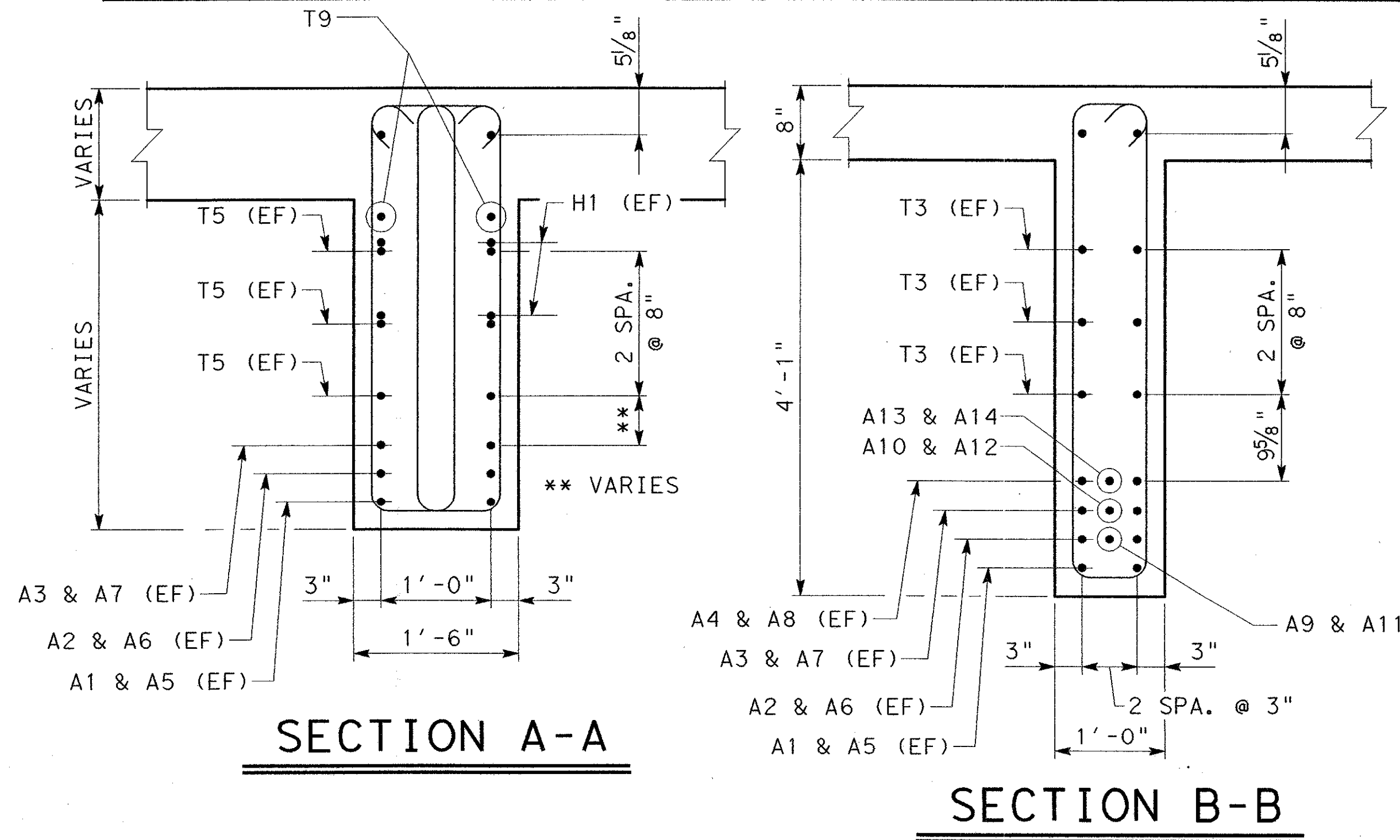
**TYPICAL DIAPHRAGM**



**DIAPHRAGM TABLE OF ESTIMATED QUANTITIES**

BAR	NO.	SIZE	LENGTH	WEIGHT
A1	2	#9	44'-0"	300
A2	2	#9	43'-8"	297
A3	2	#9	42'-3"	288
A4	3	#9	35'-8"	364
A5	2	#9	19'-2"	131
A6	2	#9	18'-10"	129
A7	2	#9	16'-6"	113
A8	3	#9	13'-2"	135
A9	1	#9	35'-7"	121
A10	1	#9	35'-7"	121
A11	1	#9	16'-6"	57
A12	1	#9	16'-6"	57
A13	1	#9	39'-1"	133
A14	1	#9	13'-2"	45
T1	84	#5	2'-3" AVG	198
T2	24	#5	5'-1" AVG	128
T3	18	#5	6'-5" AVG	121
T4	2	#5	33'-6"	70
T5	6	#5	6'-10" AVG	43
T6	6	#5	4'-11" AVG	31
T7	2	#5	25'-0"	53
T8	2	#5	5'-5"	12
T9	2	#5	7'-11"	17
H1	4	#6	3'-8"	23
S1	14	#6	9'-10" AVG	207
S2	10	#6	10'-2" AVG	153
S3	20	#6	12'-3" AVG	368
S4	18	#6	11'-9"	318
S5	12	#6	11'-9"	212
S6	16	#6	9'-7" AVG	231
S7	14	#6	7'-1" AVG	149
U1	3	#6	6'-9"	31
U2	3	#6	3'-0"	14
REINFORCING STEEL			Lb	4670
CLASS "F" CONC (CAP)			CY	9.0

BAR	A	B	D	E	M	N	P	R	H	θ
A1	2'-1"	9'-4 <sup>1</sup> / <sub>16</sub> "	7'-10"	3"	8 <sup>3</sup> / <sub>16</sub> "	3'-7"	20'-9"	3"	1'-7"	101
A2	2'-1"	9'-3 <sup>3</sup> / <sub>4</sub> "	7'-10"	3"	8 <sup>3</sup> / <sub>16</sub> "	3'-7"	20'-9"	3"	1'-4"	101
A3	2'-1"	9'-2 <sup>5</sup> / <sub>16</sub> "	7'-10"	3"	8 <sup>3</sup> / <sub>16</sub> "	3'-7"	20'-9"	3"		
A4	7 <sup>5</sup> / <sub>16</sub> "	2'-9"	7'-10"	3"	8 <sup>3</sup> / <sub>16</sub> "	3'-7"	20'-9"	3"		
A5	1'-11 <sup>1</sup> / <sub>2</sub> "	6'-10"			8 <sup>3</sup> / <sub>16</sub> "	3'-7"	6'-2 <sup>1</sup> / <sub>2</sub> "	3"	1'-6 <sup>3</sup> / <sub>16</sub> "	104
A6	1'-11 <sup>1</sup> / <sub>4</sub> "	6'-9"			8 <sup>3</sup> / <sub>16</sub> "	3'-7"	6'-2 <sup>1</sup> / <sub>2</sub> "	3"	1'-3 <sup>1</sup> / <sub>4</sub> "	104
A7	1'-8"	5'-9"			8 <sup>3</sup> / <sub>16</sub> "	3'-7"	6'-2 <sup>1</sup> / <sub>2</sub> "	3"		
A8	9"	2'-7"			8 <sup>3</sup> / <sub>16</sub> "	3'-7"	6'-2 <sup>1</sup> / <sub>2</sub> "	3"		
A9	7 <sup>5</sup> / <sub>16</sub> "	2'-9"	7'-10"	3"	8 <sup>3</sup> / <sub>16</sub> "	3'-7"	20'-9"			
A10	7 <sup>5</sup> / <sub>16</sub> "	2'-9"	7'-10"	3"	8 <sup>3</sup> / <sub>16</sub> "	3'-7"	20'-9"			
A11	1'-8"	5'-9"			8 <sup>3</sup> / <sub>16</sub> "	3'-7"	6'-2 <sup>1</sup> / <sub>2</sub> "			
A12	1'-8"	5'-9"			8 <sup>3</sup> / <sub>16</sub> "	3'-7"	6'-2 <sup>1</sup> / <sub>2</sub> "			
A13	7 <sup>5</sup> / <sub>16</sub> "	2'-9"			8 <sup>3</sup> / <sub>16</sub> "	3'-7"	20'-9"			
A14	9"	2'-7"			8 <sup>3</sup> / <sub>16</sub> "	3'-7"	6'-2 <sup>1</sup> / <sub>2</sub> "			



**REINFORCING BAR BEND DETAILS**

**NOTES**

1. CLASS "F" CONCRETE STRENGTH f'c=5000 psi.
2. ALL REINFORCING STEEL SHALL BE GRADE 60.
3. ROUGHEN SURFACES BETWEEN U-BEAMS AND DIAPHRAGMS TO A FULL AMPLITUDE OF APPROX. 1/4".
4. TRANSVERSE DIAPHRAGMS 1 AND 11 SHALL END AT EDGE OF SLAB. ADJUST REINFORCEMENT ACCORDINGLY.



NO.	DATE	REVISION	APPROV.
<b>URS</b>			
GREYSTONE CENTRE 3010 LBJ FREEWAY, SUITE 1300 DALLAS, TX 75234			
<b>ARAPAHO ROAD - PHASE III</b>			
SURVEYOR BOULEVARD TO ADDISON ROAD			
<b>DIAPHRAGM REINFORCEMENT</b>			
UNIT 4			
TOWN OF ADDISON, TEXAS			
Design	Drawn	RUB	DATE
Check	Check		05-07-04
SCALE	PROJECT NO.	SHEET NO.	
NONE	25768	BR-58	

12:59:31 PM 6/29/2004

C:\projects\arapaho\road\br\age\oad\from\temp\5-24-04\ar390040.dgn