

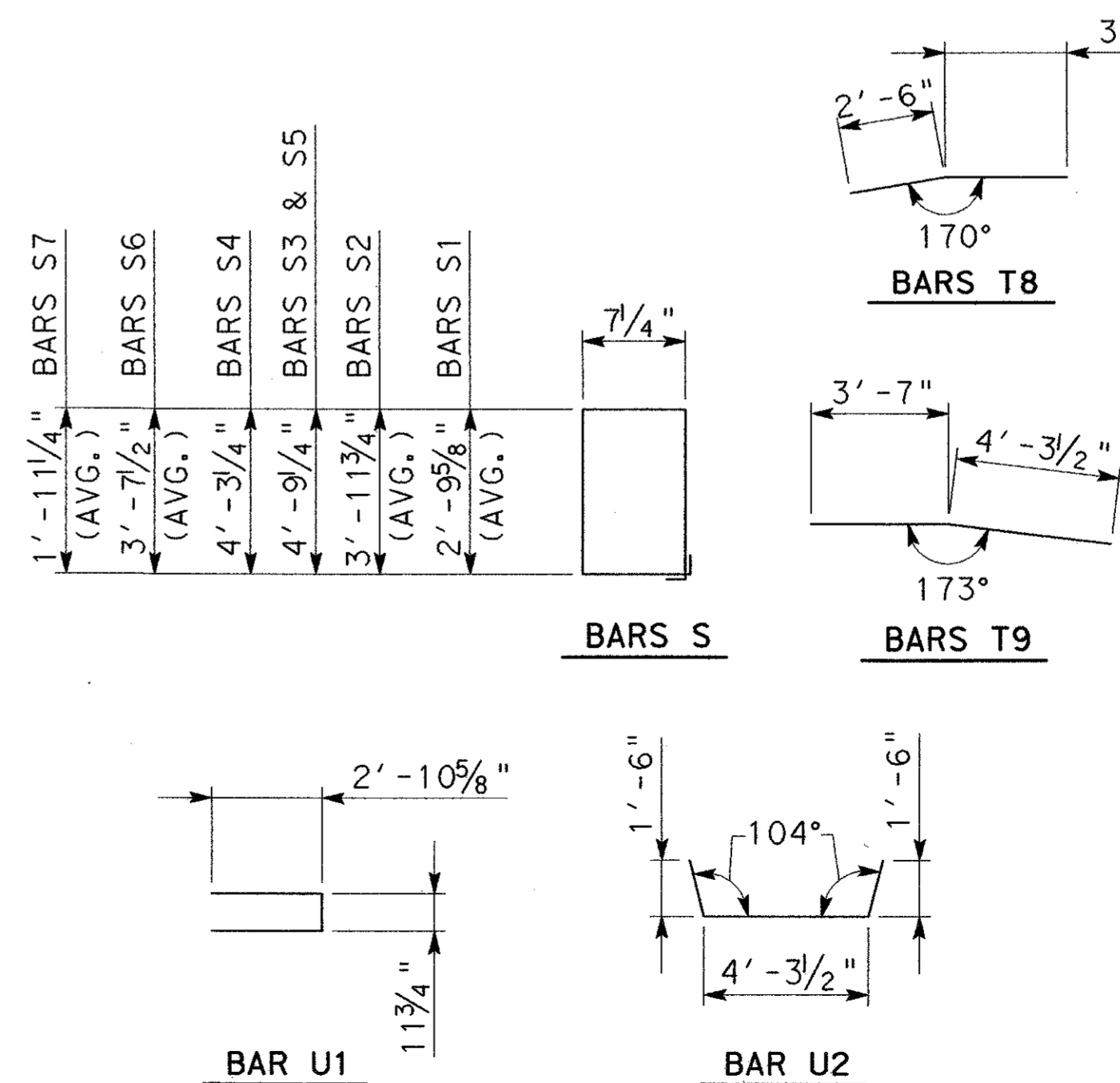
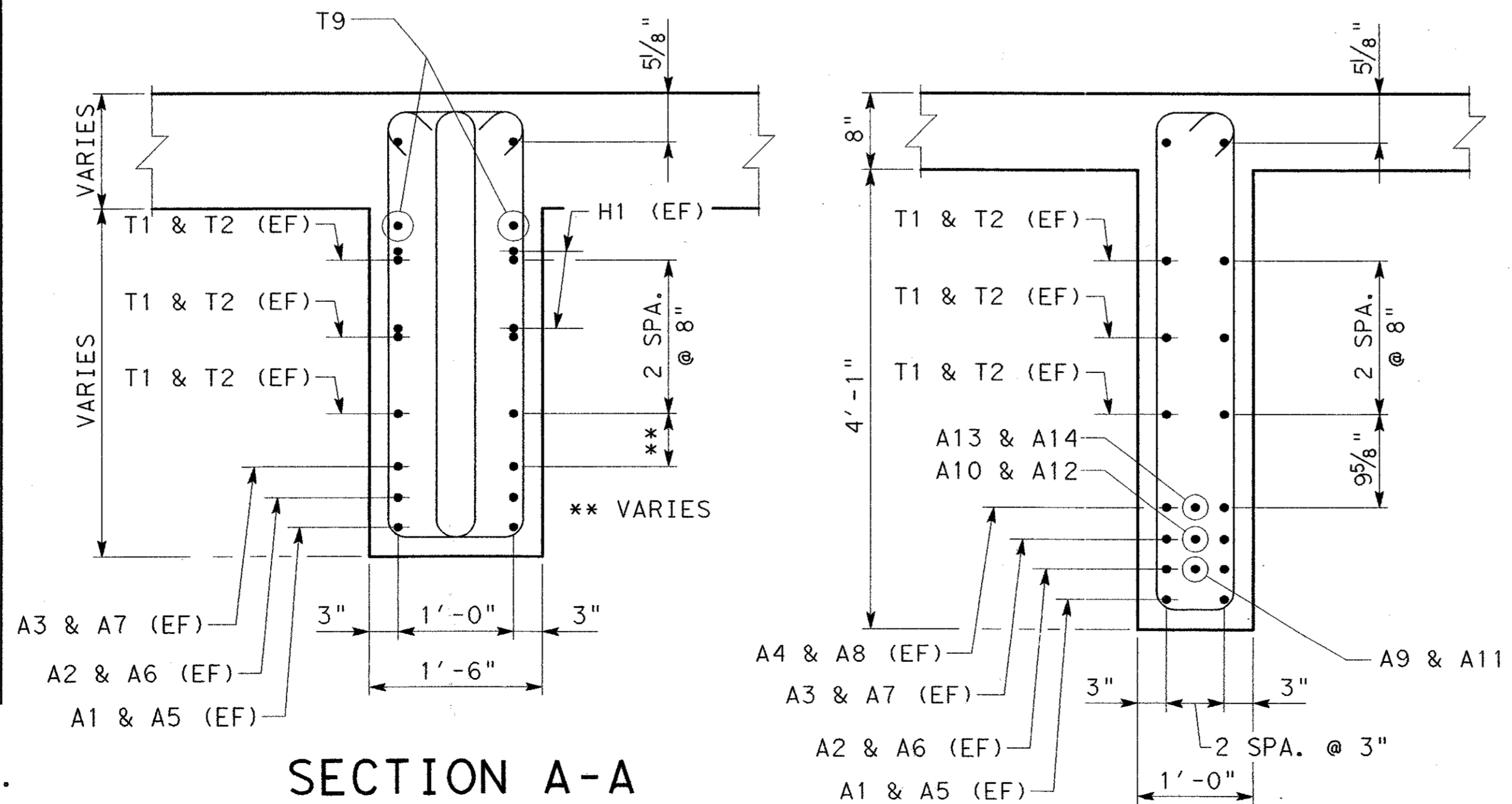
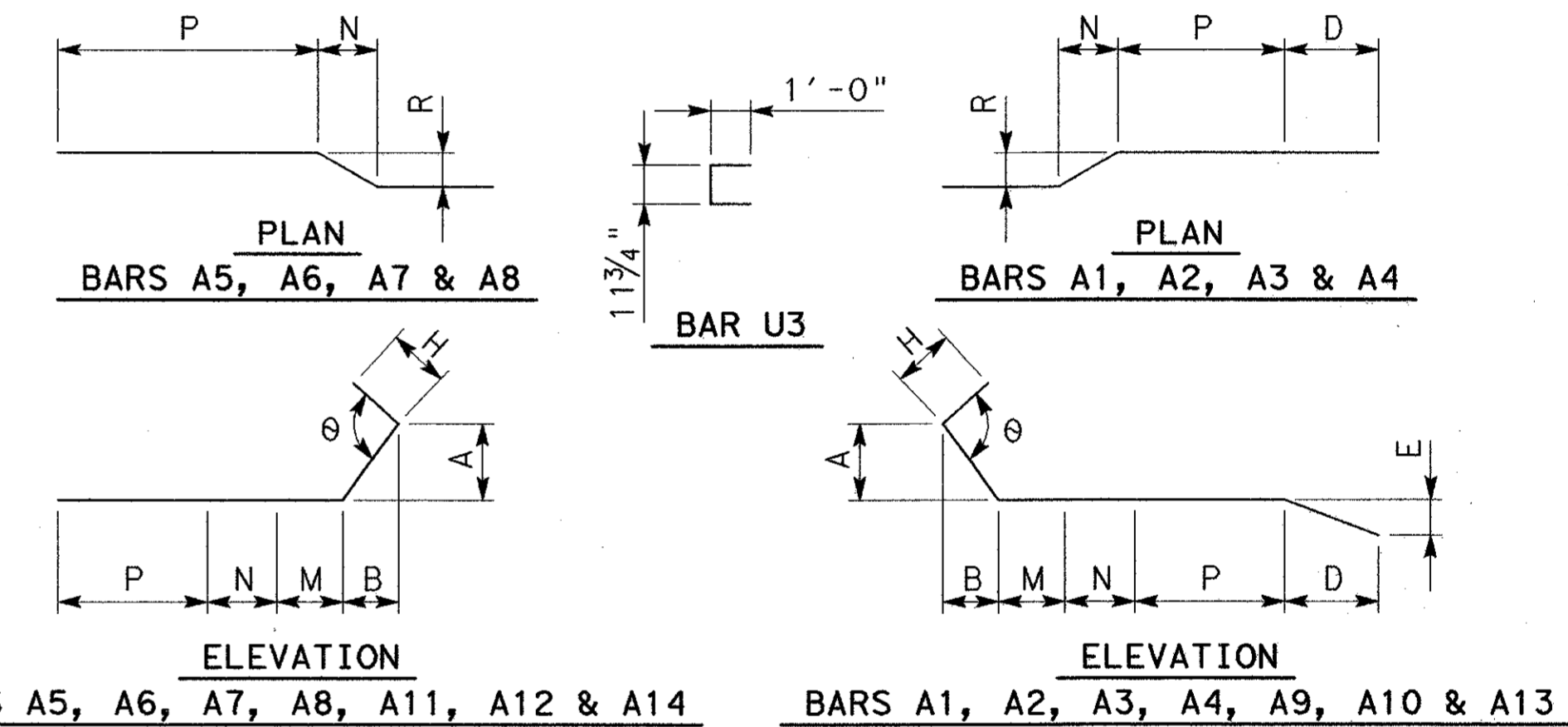
**DRIP DETAIL**  
(TYP BOTH ENDS)

**DIAPHRAGM AT  $\phi$  MAIN SPAN**

**DIAPHRAGM TABLE OF ESTIMATED QUANTITIES**

BAR	NO.	SIZE	LENGTH	WEIGHT
A1	2	#9	47'-5"	323
A2	2	#9	47'-1"	321
A3	2	#9	45'-8"	311
A4	3	#9	39'-1"	399
A5	2	#9	20'-3"	138
A6	2	#9	19'-11"	136
A7	2	#9	17'-7"	120
A8	3	#9	14'-3"	146
A9	1	#9	39'-1"	133
A10	1	#9	39'-1"	133
A11	1	#9	17'-7"	60
A12	1	#9	17'-7"	60
A13	1	#9	39'-1"	133
A14	1	#9	14'-3"	49
T1	6	#5	31'-3" AVG	196
T2	6	#5	26'-0" AVG	163
T3	2	#5	33'-6"	70
T4	2	#5	25'-0"	53
T8	2	#5	5'-9"	12
T9	2	#5	7'-11"	17
H1	4	#6	3'-8"	23
S1	14	#6	8'-10" AVG	186
S2	12	#6	11'-3" AVG	203
S3	36	#6	12'-10" AVG	694
S4	54	#6	11'-10"	480
S5	20	#6	12'-10"	193
S6	18	#6	10'-6" AVG	284
S7	10	#6	7'-2" AVG	108
U1	3	#6	6'-9"	31
U2	10	#6	7'-4"	111
U3	3	#6	3'-0"	14
REINFORCING STEEL			Lb	5286
CLASS "F" CONC			CY	9.4

BAR	A	B	D	E	M	N	P	R	H	$\theta$
A1	2'-1"	9'-4 1/4"	11'-2 3/4"	5 1/2"	8 1/4"	3'-7"	20'-8 3/4"	3"	1'-6 3/4"	101.38
A2	2'-0 5/8"	9'-3 1/4"	11'-2 3/4"	5 1/2"	8 1/4"	3'-7"	20'-8 3/4"	3"	1'-3 3/4"	101.38
A3	2'-0 5/8"	9'-2 1/4"	11'-2 3/4"	5 1/2"	8 1/4"	3'-7"	20'-8 3/4"	3"		
A4	7 1/4"	2'-8 3/4"	11'-2 3/4"	5 1/2"	8 1/4"	3'-7"	20'-8 3/4"	3"		
A5	1'-11 1/2"	6'-9 3/4"			8 1/4"	3'-7"	7'-3 1/2"	3"	1'-6 1/4"	104.83
A6	1'-11 1/4"	6'-9"			8 1/4"	3'-7"	7'-3 1/2"	3"	1'-3 1/4"	104.83
A7	1'-7 3/4"	5'-9"			8 1/4"	3'-7"	7'-3 1/2"	3"		
A8	8 3/4"	2'-6 3/4"			8 1/4"	3'-7"	7'-3 1/2"	3"		
A9	7 1/4"	2'-8 3/4"	11'-2 3/4"	5 1/2"	8 1/4"	3'-7"	20'-8 3/4"			
A10	7 1/4"	2'-8 3/4"	11'-2 3/4"	5 1/2"	8 1/4"	3'-7"	20'-8 3/4"			
A11	1'-7 3/4"	5'-9"			8 1/4"	3'-7"	7'-3 1/2"			
A12	1'-7 3/4"	5'-9"			8 1/4"	3'-7"	7'-3 1/2"			
A13	7 1/4"	2'-8 3/4"	11'-2 3/4"	5 1/2"	8 1/4"	3'-7"	20'-8 3/4"			
A14	8 3/4"	2'-6 3/4"			8 1/4"	3'-7"	7'-3 1/2"			



- NOTES**
- CLASS "F" CONCRETE STRENGTH  $f'_c=5000$  psi.
  - ALL REINFORCING STEEL SHALL BE GRADE 60.
  - DIAPHRAGM THICKNESS TRANSITION FROM 1'-6" TO 1'-0".
  - LONGITUDINAL U-BEAM CAST-IN-PLACE CLOSURE REINFORCEMENT IS NOT SHOWN. SEE SHEET BR-43.

NO.	DATE	REVISION	APPROV.

**URS**  
GREYSTONE CENTRE  
5010 LBJ FREEWAY, SUITE 1300  
DALLAS, TX 75254

**ARAPAHO ROAD - PHASE III**  
SURVEYOR BOULEVARD TO ADDISON ROAD

**DIAPHRAGM REINFORCEMENT**  
UNIT 4

SHEET 2 OF 2

Design	Drawn	RJB	DATE	SCALE	PROJECT NO.	SHEET NO.
Check	Check		05-07-04	NONE	25768	BR-59

12:59:31 PM 6/29/2004