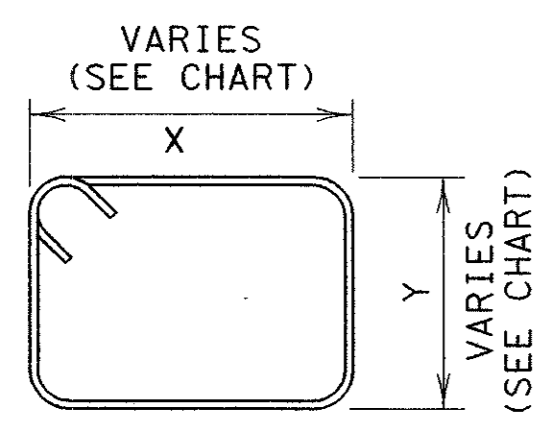
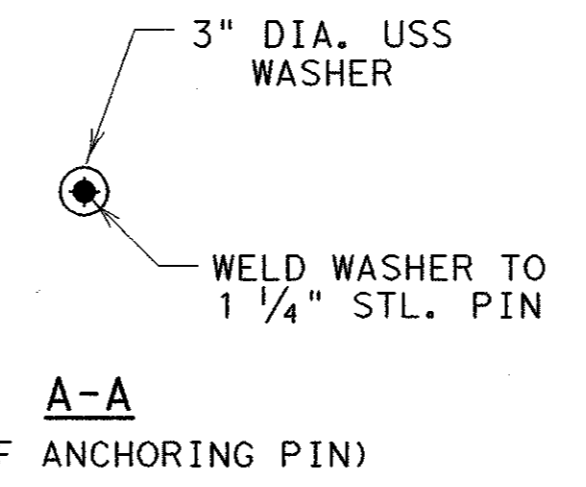
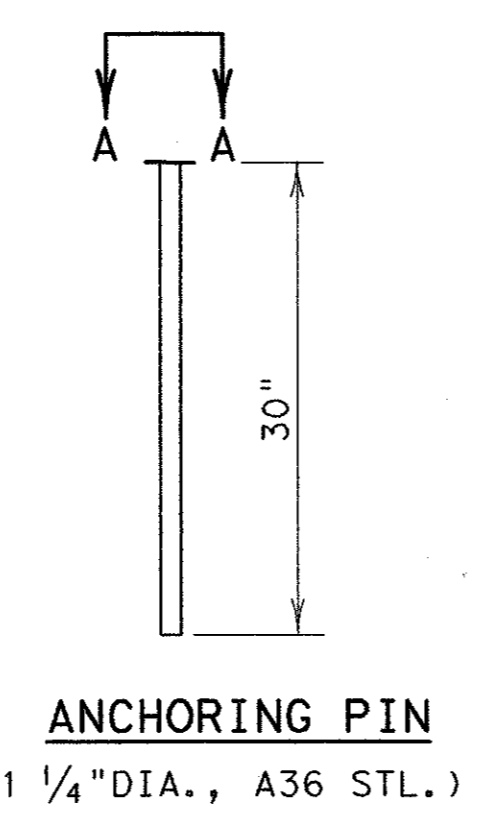
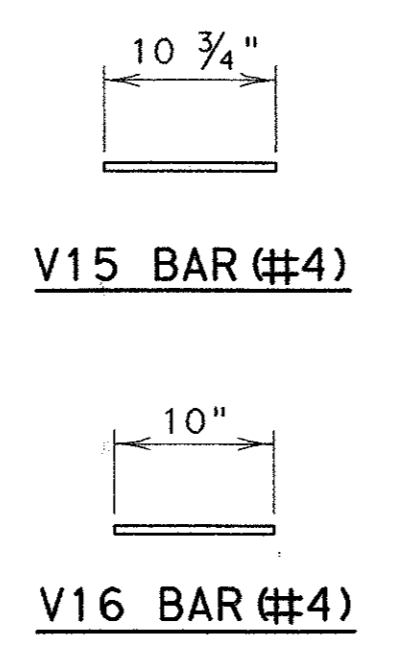
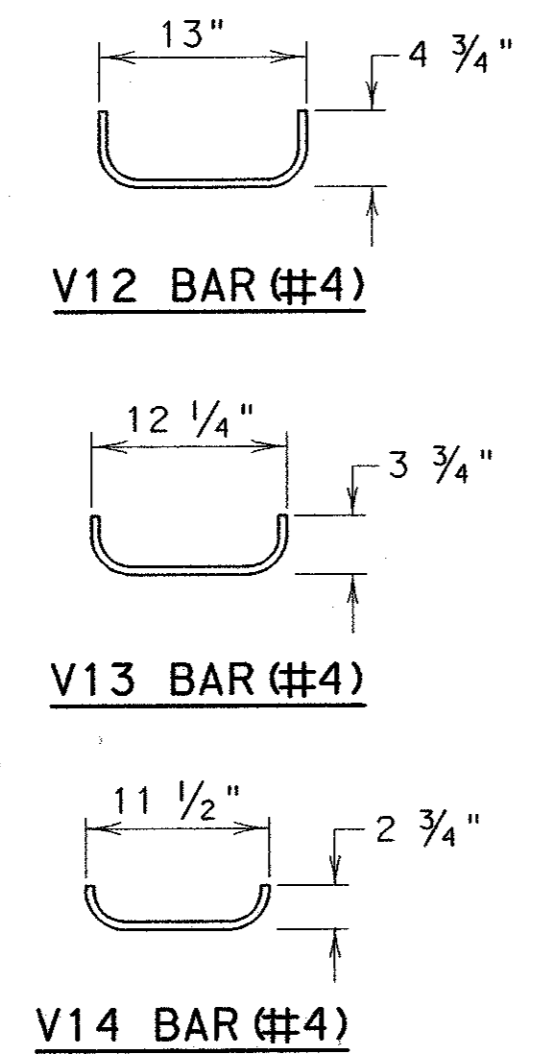


- GENERAL NOTES**
1. TYPE 2 BARRIER SHALL BE USED AS AN END TREATMENT FOR TYPE 1 BARRIER WHEN APPROPRIATE.
 2. THE ANCHORAGE PINS ARE ALL THE SAME LENGTH AND ARE INTENDED TO BE DRIVEN FLUSH WITH THE TOP OF THE BARRIER SURFACE.
 3. THE BENDS IN THE H3 AND H1 BARS ARE SLIGHT, NO FORMAL BEND IS NECESSARY.
 4. TYPE 2 BARRIER MUST BE LIFTED FROM REAR FIRST TO PREVENT CRACKING OF SLOPED SECTION.
 5. SEE SHEET 1 OF 2 FOR ADDITIONAL INFORMATION.



V 3-11 BARS (#4)

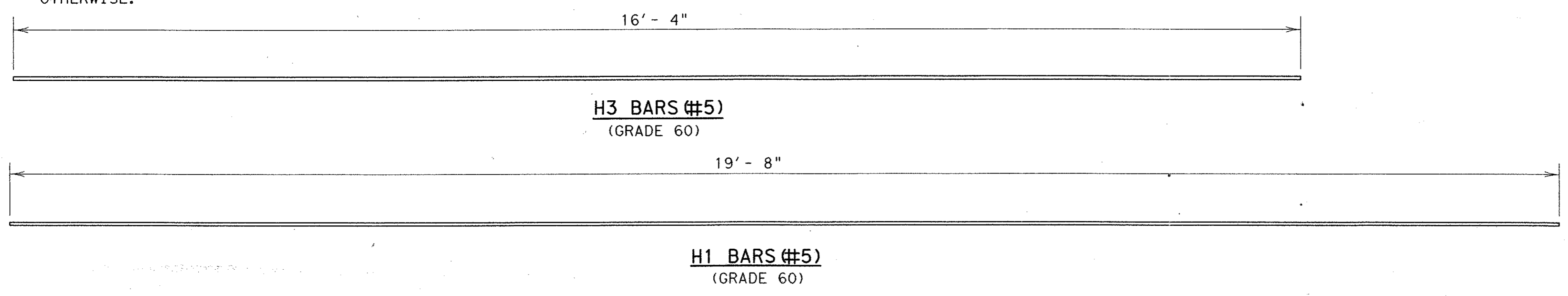
BAR (#4)	X (IN.)	Y (IN.)
V3 BAR	20 1/4	14 1/2
V4 BAR	19 1/2	13 1/2
V5 BAR	18 1/2	12 1/4
V6 BAR	17 1/2	11 1/4
V7 BAR	17	10 1/4
V8 BAR	16 1/4	9
V9 BAR	15 1/2	8
V10 BAR	14 1/2	7
V11 BAR	13 3/4	6



FOR CONTRACTORS INFORMATION ONLY

(TYPE 2)		
APPROX. QUANTITIES	20 FT. SECTION	
CONCRETE	CY	1.65
REINFORCING STEEL	LBS	240
TOTAL BARRIER WT.	LBS	7000

NOTE: ALL BENDING OF SHEAR REBAR IS AT A 2" RADIUS, UNLESS SPECIFIED OTHERWISE.



TEXAS DEPARTMENT OF TRANSPORTATION

LOW PROFILE CONCRETE BARRIER
(PORTABLE AND PRECAST)

LPCB (2) - 92

SHEET 2 OF 2

© TxDOT SEPTEMBER 1992	FED. RD. DIV. NO.	STATE	FEDERAL AID PROJECT NO.	SHEET NO.
MODIFICATIONS	6	TEXAS		TC-10
	STATE DIST. NO.	COUNTY	CONT.	SECT.
				JOB
				HIGHWAY NO.