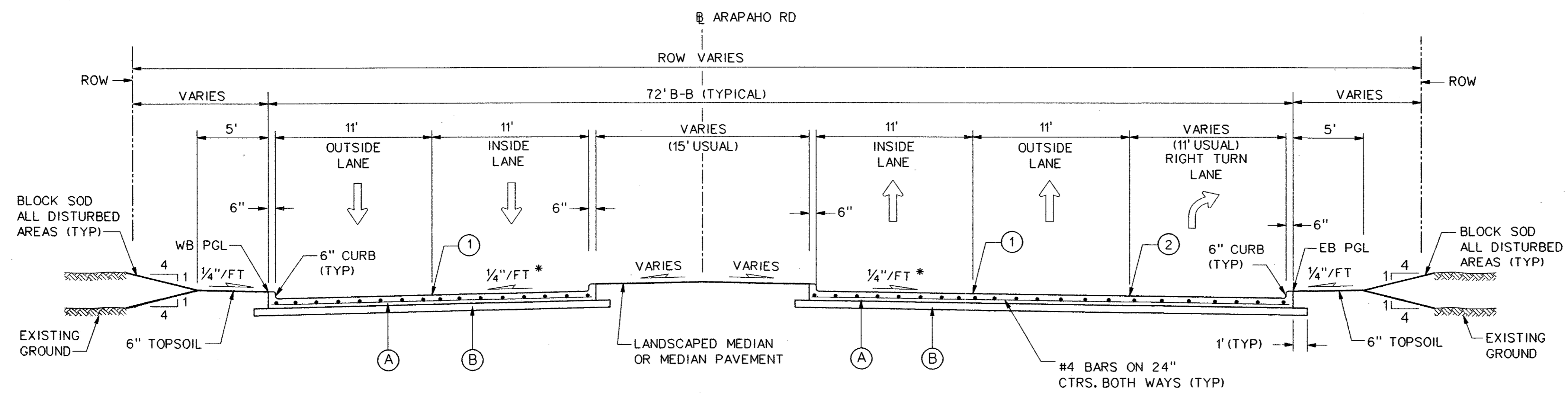


NOTES:

1. INTEGRAL CURB & GUTTER SHALL CONFORM TO NCTCOG STD DWG NO. 2120.
2. ALL TRANSVERSE JOINTS SHALL BE ON 11' CENTERS MAX.
3. PROFILE GRADES SHOWN ON THE PAVING PLAN & PROFILE SHEETS ARE TOP OF CURB UNLESS NOTED OTHERWISE ON THE PLANS.
4. SEE PAVING PLAN & PROFILE SHEETS FOR MEDIAN AND RIGHT TURN LANE TOP OF CURB GRADES.
5. THE FINAL FINISH ON THE CONCRETE STREET PAVEMENT SHALL CONSIST OF A COMBINATION OF A LONGITUDINAL CARPET DRAG AND TRANSVERSE METAL TINE FINISH AS DESCRIBED IN TxDOT STANDARD SPECIFICATIONS FOR ITEM 360 - CONCRETE PAVEMENT UNLESS SPECIFIED OTHERWISE IN THE PLANS.
6. TOPSOIL TO BE FINE GRADED AND RAKED BEFORE SOD IS INSTALLED.
7. SEE CROSS SECTION SHEETS FOR DETAILS OF REINFORCED CONCRETE BOX LOCATIONS.

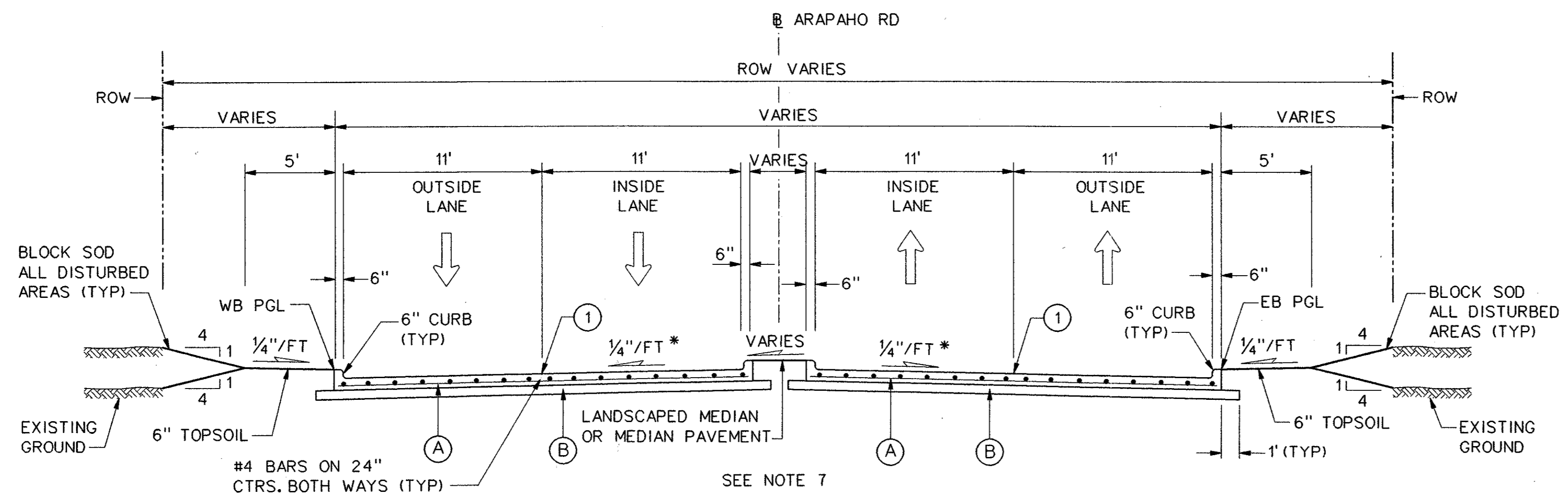


TYPICAL SECTION - ARAPAHO ROAD
4 LANE DIVIDED W/ EB RIGHT TURN LANE
 STA 69+12.85 TO STA 71+66.55

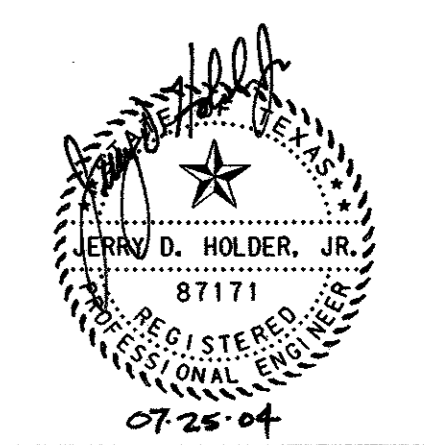
*PAVEMENT CROSS SLOPES VARY FROM THE TYPICAL 1/4"/FT. SEE PAVING PLANS FOR PROPOSED GRADES.

LEGEND

- (A) 10" 5000 p.s.i. REINFORCED PORTLAND CEMENT CONCRETE PVMT.
- (B) SCARIFY 6" DEPTH AND RECOMPACT TO 95% STANDARD PROCTOR DENSITY. SUBSIDIARY TO 10" REINFORCED CONCRETE PAY ITEM.
- (1) SAWED LONGITUDINAL DUMMY JOINT.
- (2) CONSTRUCTION JOINT (FULL WIDTH PAVING IS ALLOWED WHERE APPROVED BY THE TOWN OF ADDISON). IF FULL WIDTH PAVING IS APPROVED, SAWED JOINT.



TYPICAL SECTION - ARAPAHO ROAD
4 LANE DIVIDED
 STA 67+77.46 TO STA 69+12.85



				37
NO.	DATE	REVISION	APPROV.	
HNTB ARCHITECTS ENGINEERS PLANNERS The HNTB Companies				
ARAPAHO ROAD - PHASE III				
SURVEYOR BOULEVARD TO ADDISON ROAD				
PAVING TYPICAL SECTIONS				
SHEET 7 OF 9				
TOWN OF ADDISON, TEXAS				
Design JSN	Drawn GFS	DATE	SCALE	PROJECT NO. SHEET NO.
Check JDH	Check JSN	APRIL 04	1" = 5'	25768 PT-7

29-JUN-2004 12:17
 G:\25768-ph3\3\m\cads\or3\typ07.dgn