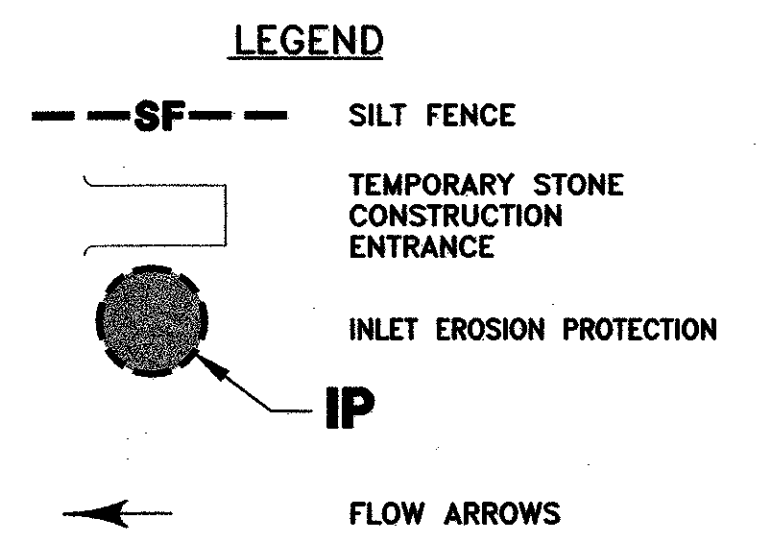
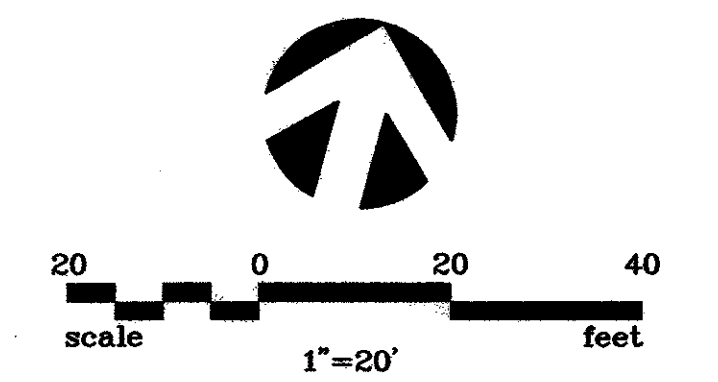
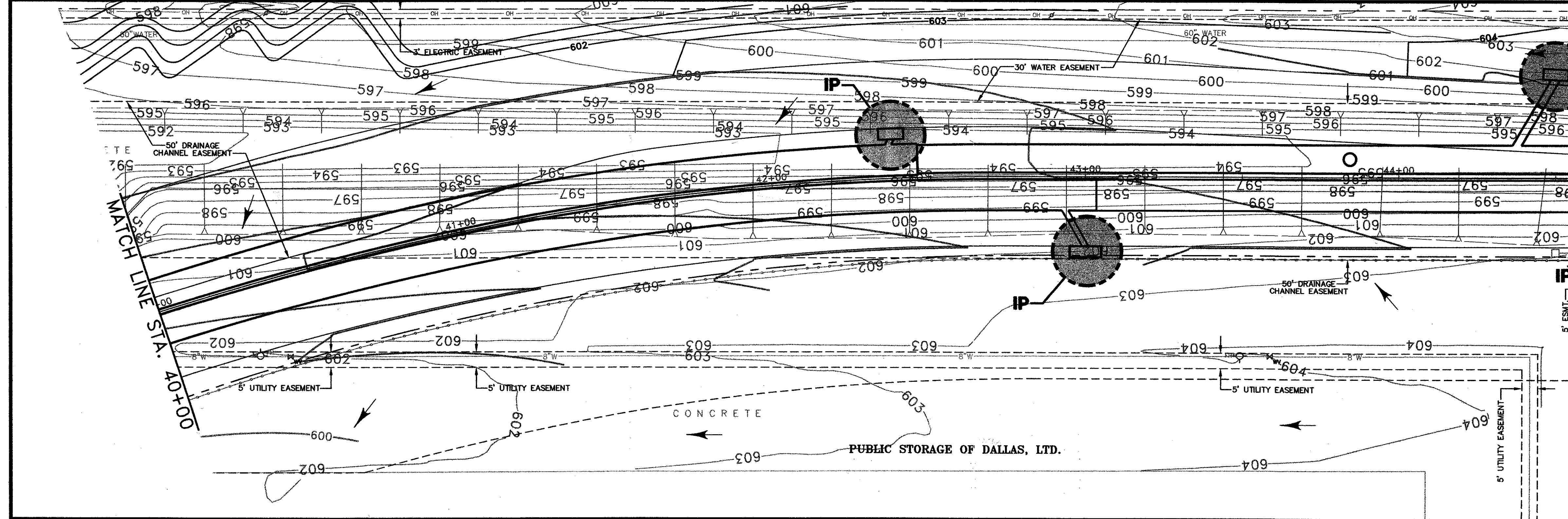
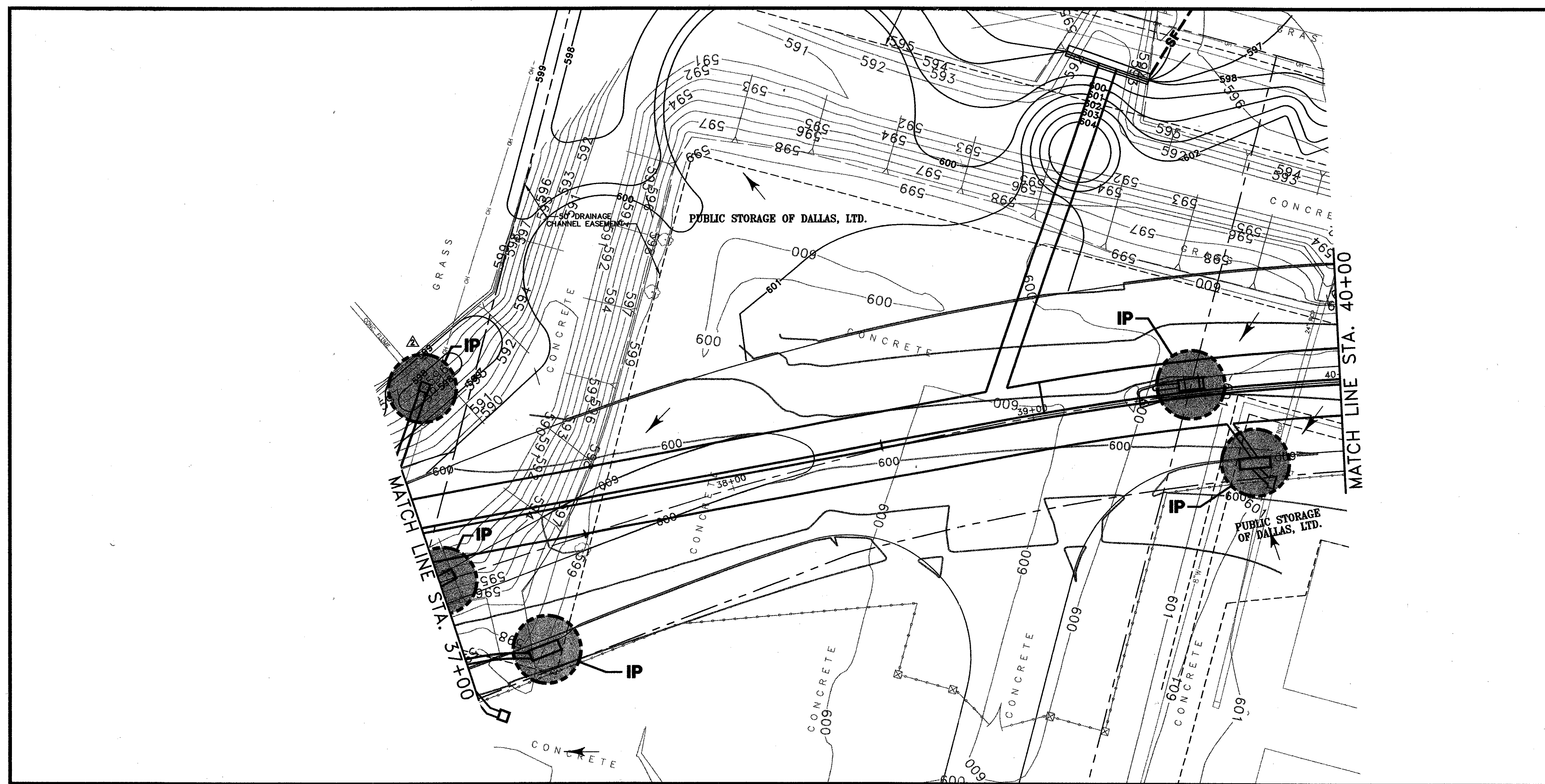


NO.	DATE	REVISION	APPROV.
1			
2	07/21/04	REVISED PER G & A	A.K.C.
3			



- NOTES:**
- SEE SHEET EC-7 FOR EROSION CONTROL DETAILS.
 - AFTER CURB AND PAVEMENT HAVE BEEN CONSTRUCTED, CONTRACTOR SHALL PLACE SILT FENCE BEHIND CURB UNTIL VEGETATION BEHIND CURB HAS STABILIZED.



THE SEAL APPEARING ON THIS DOCUMENT WAS AUTHORIZED BY:
 A. KATURA CURRY
 ON 7-21-04.
 ALTERATION OF A SEALED DOCUMENT WITHOUT PROPER NOTIFICATION TO THE RESPONSIBLE ENGINEER IS AN OFFENSE UNDER THE TEXAS ENGINEERING PRACTICE ACT.

DATE:	MAY 2004	SCALE:	1"=20'
JOB NO.:	02-320		
DRAWN:	G&A	DESIGN:	AKC
REVIEWED:		DWG:	320EROSION01.DWG
ARPAHO ROAD PHASE III			
EROSION CONTROL PLAN			
STA. 37+00 TO STA. 45+00			
TOWN OF ADDISON			
		Grantham & Associates, Inc.	
1919 S. SHILOH ROAD, SUITE 310, L.B. 8 GARLAND, TEXAS 75042		(972) 864-2333 (TEL) (972) 864-2334 (FAX)	

SHT.
EC-2