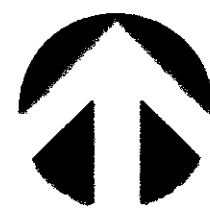
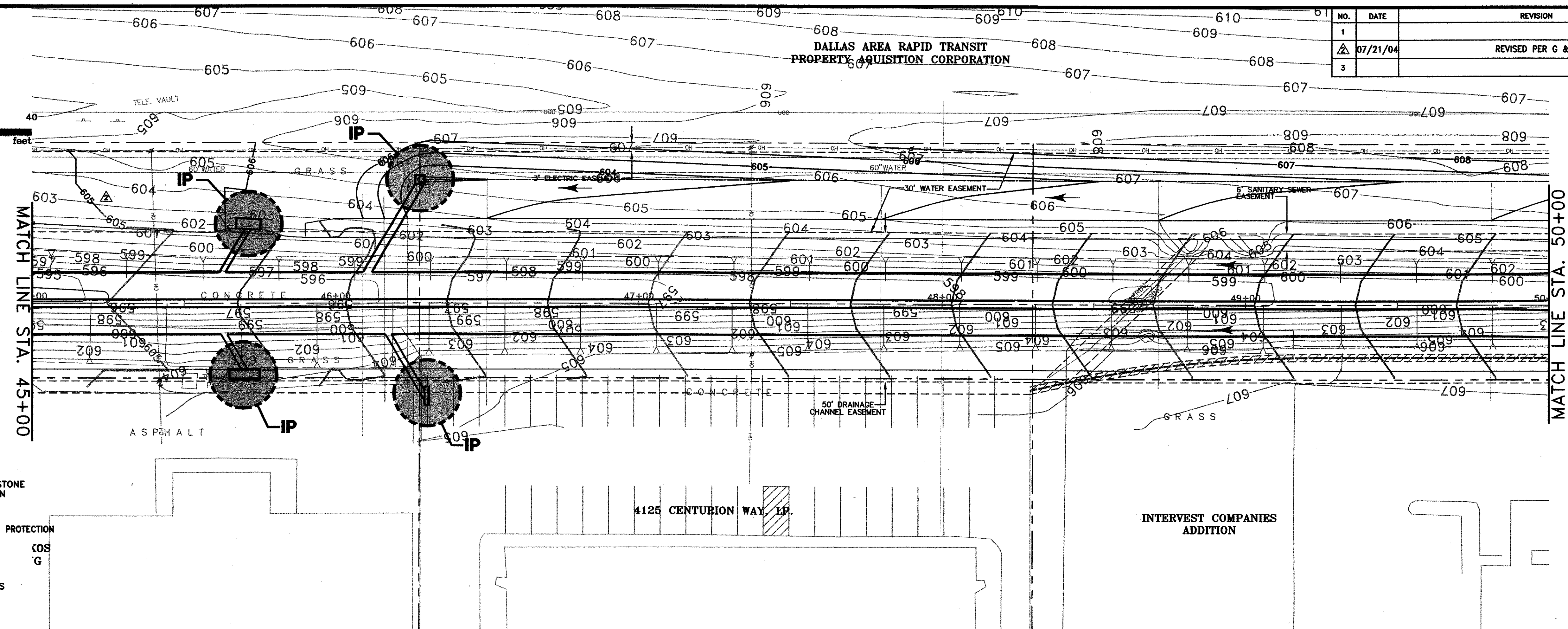


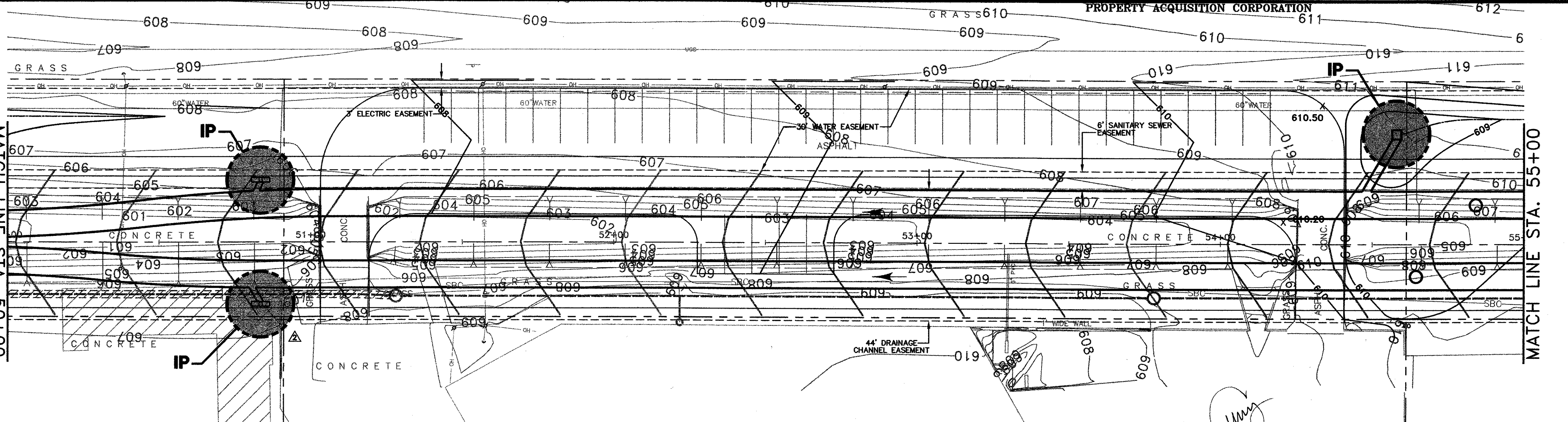
NO.	DATE	REVISION	APPROV.
1			
2	07/21/04	REVISED PER G & A	A.K.C.
3			



20 0 20 40  
scale 1"=20' feet

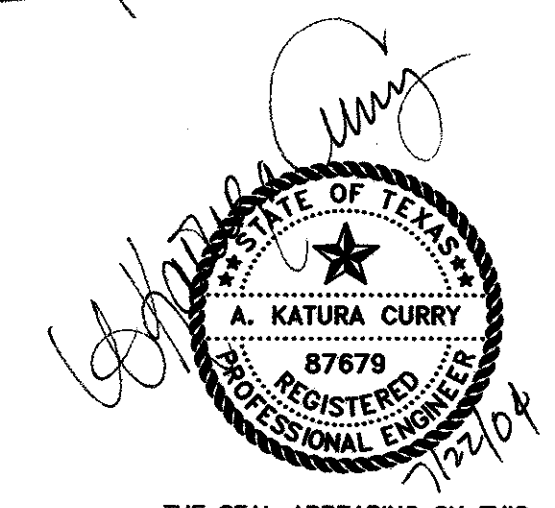


- LEGEND**
- SF SILT FENCE
  - TEMPORARY STONE CONSTRUCTION ENTRANCE
  - IP INLET EROSION PROTECTION
  - FLOW ARROWS



ABSOLUTE SYSTEMS, LTD

- NOTES:**
- SEE SHEET EC-7 FOR EROSION CONTROL DETAILS.
  - AFTER CURB AND PAVEMENT HAVE BEEN CONSTRUCTED, CONTRACTOR SHALL PLACE SILT FENCE BEHIND CURB UNTIL VEGETATION BEHIND CURB HAS STABILIZED.



THE SEAL APPEARING ON THIS DOCUMENT WAS AUTHORIZED BY:  
A. KATURA CURRY  
ON 7-21-04.  
ALTERATION OF A SEALED DOCUMENT WITHOUT PROPER NOTIFICATION TO THE RESPONSIBLE ENGINEER IS AN OFFENSE UNDER THE TEXAS ENGINEERING PRACTICE ACT.

DATE:	MAY 2004	SCALE:	1"=20'	JOB NO.:	02-320
DRAWN:	G&A	DESIGN:	AKC	REVIEWED:	DWG:320EROSION01.DWG
<b>ARAPAHO ROAD PHASE III</b>					
<b>EROSION CONTROL PLAN</b>					
<b>STA. 45+00 TO STA. 55+00</b>					
<b>TOWN OF ADDISON</b>					
				SHT. EC-3	
1919 S. SHILOH ROAD, SUITE 310, L.B. 8 GARLAND, TEXAS 75042				(972) 864-2333 (TEL) (972) 864-2334 (FAX)	