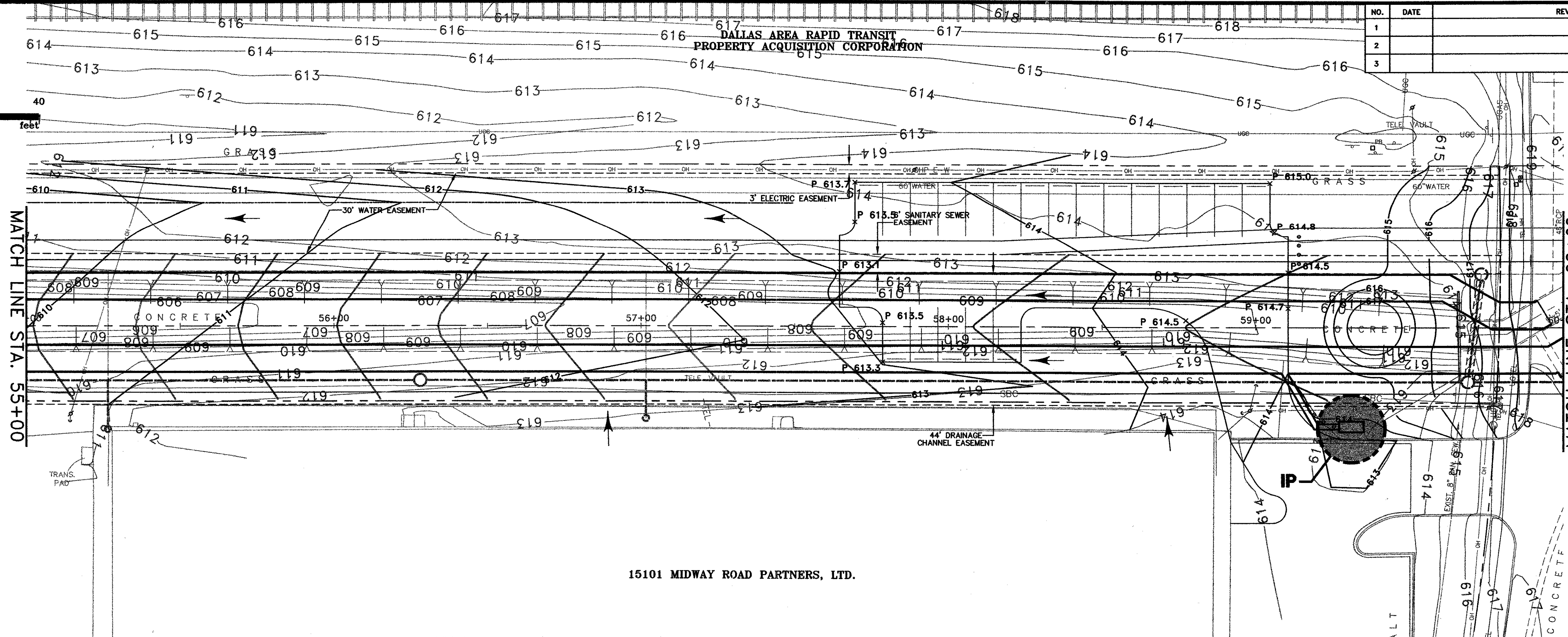


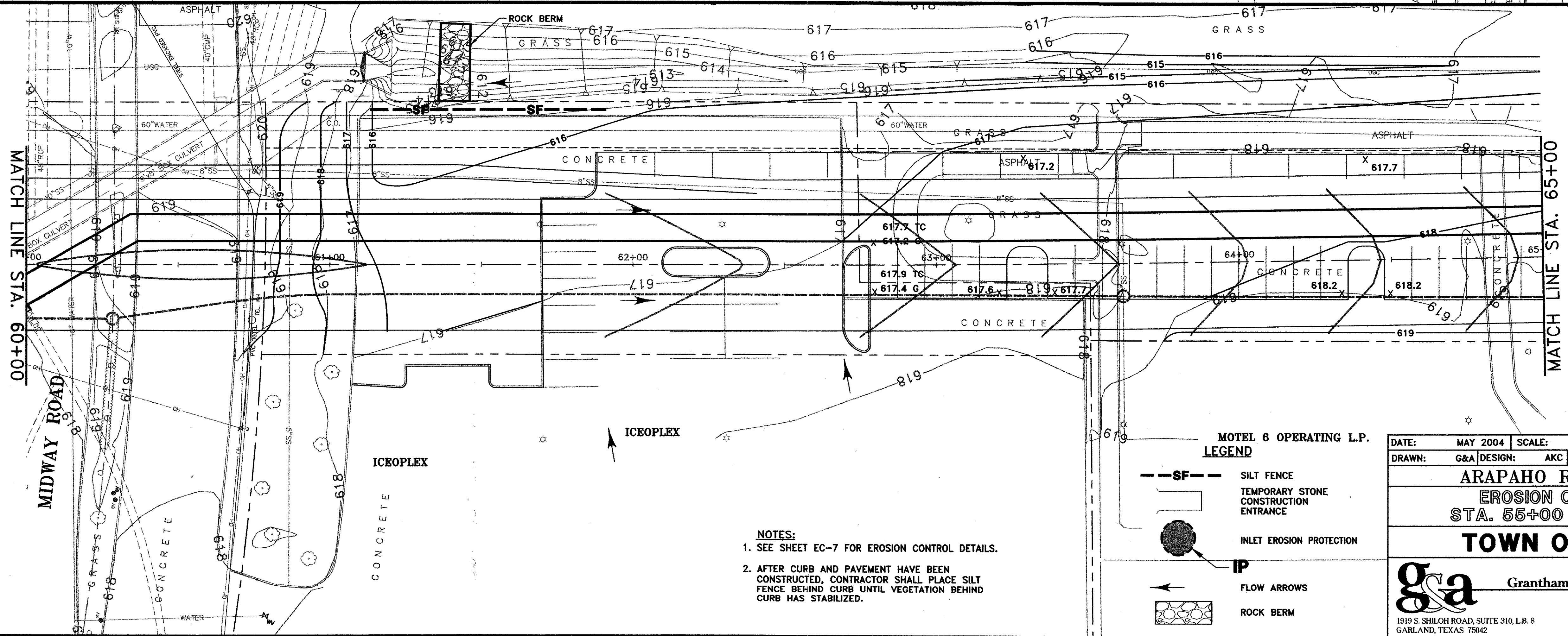


20 0 20 40
scale 1"=20'
feet

NO.	DATE	REVISION	APPROV.
1			
2			
3			



15101 MIDWAY ROAD PARTNERS, LTD.

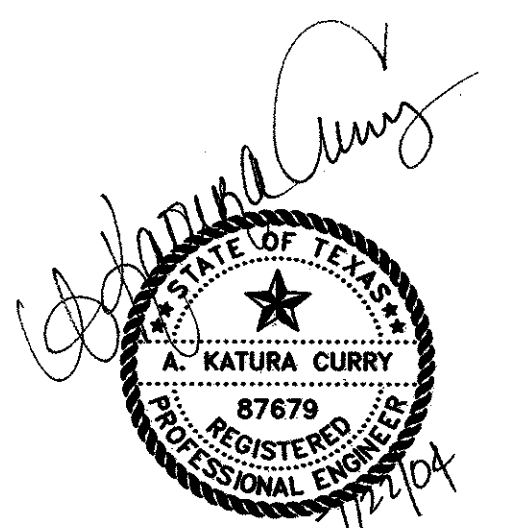


- NOTES:**
- SEE SHEET EC-7 FOR EROSION CONTROL DETAILS.
 - AFTER CURB AND PAVEMENT HAVE BEEN CONSTRUCTED, CONTRACTOR SHALL PLACE SILT FENCE BEHIND CURB UNTIL VEGETATION BEHIND CURB HAS STABILIZED.

MOTEL 6 OPERATING L.P.

LEGEND

- SILT FENCE
- TEMPORARY STONE CONSTRUCTION ENTRANCE
- INLET EROSION PROTECTION
- FLOW ARROWS
- ROCK BERM



THE SEAL APPEARING ON THIS DOCUMENT WAS AUTHORIZED BY:
A. KATURA CURRY
ON 7-21-04.
ALTERATION OF A SEALED DOCUMENT WITHOUT PROPER NOTIFICATION TO THE RESPONSIBLE ENGINEER IS AN OFFENSE UNDER THE TEXAS ENGINEERING PRACTICE ACT.

DATE:	MAY 2004	SCALE:	1"=20'	JOB NO.:	02-320
DRAWN:	G&A	DESIGN:	AKC	REVIEWED:	DWG-320EROSION01.DWG
ARAPAHO ROAD PHASE III					
EROSION CONTROL PLAN					
STA. 55+00 TO STA. 65+00					
TOWN OF ADDISON					
				Grantham & Associates, Inc.	
1919 S. SHILOH ROAD, SUITE 310, L.B. 8 GARLAND, TEXAS 75042				(972) 864-2333 (TEL) (972) 864-2334 (FAX)	

SHT. EC-4