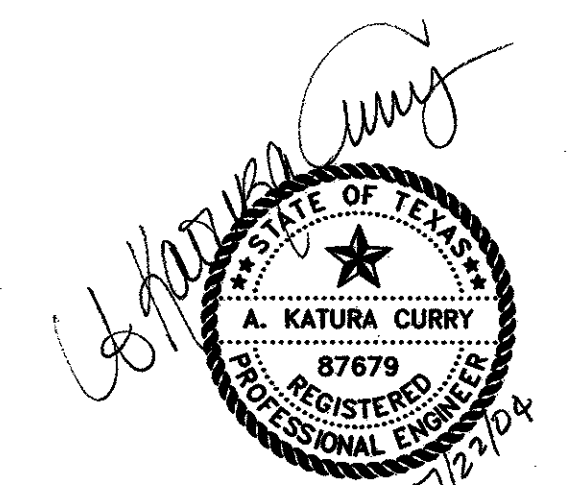
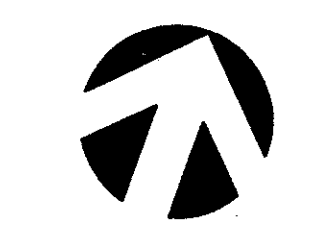
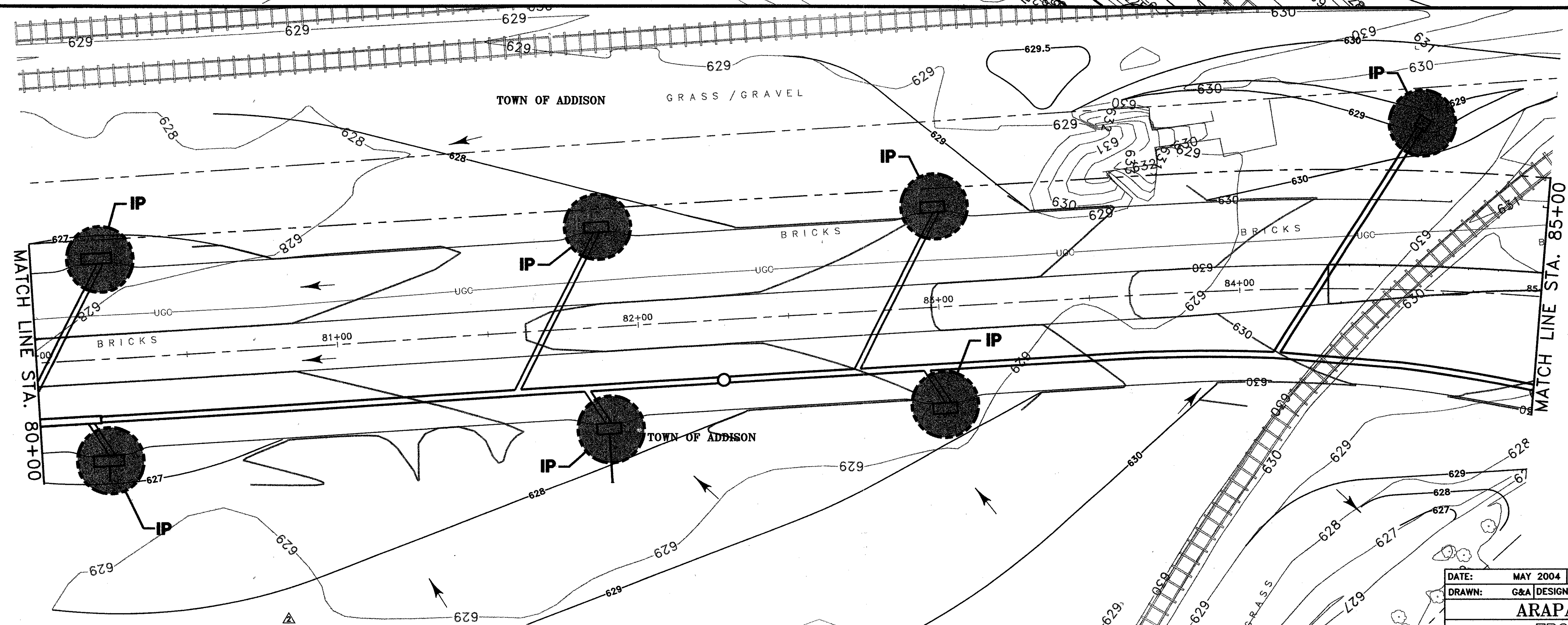
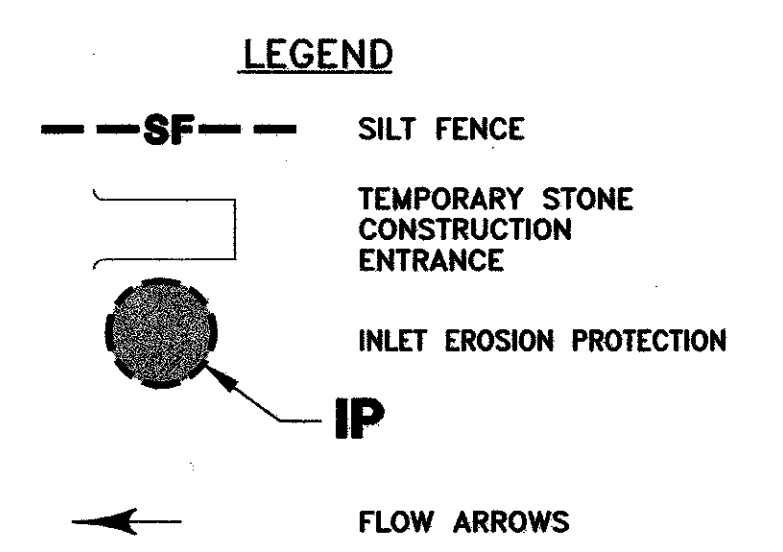
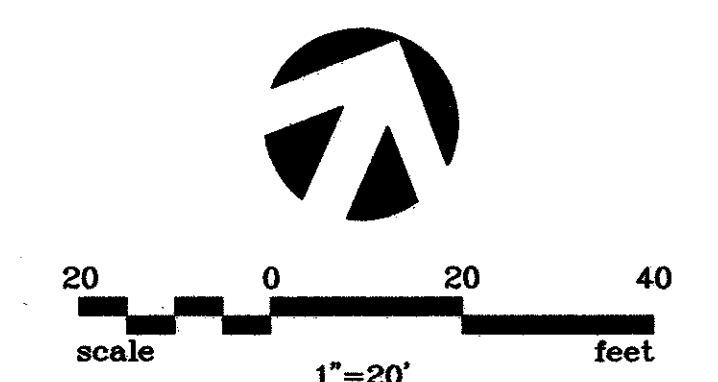
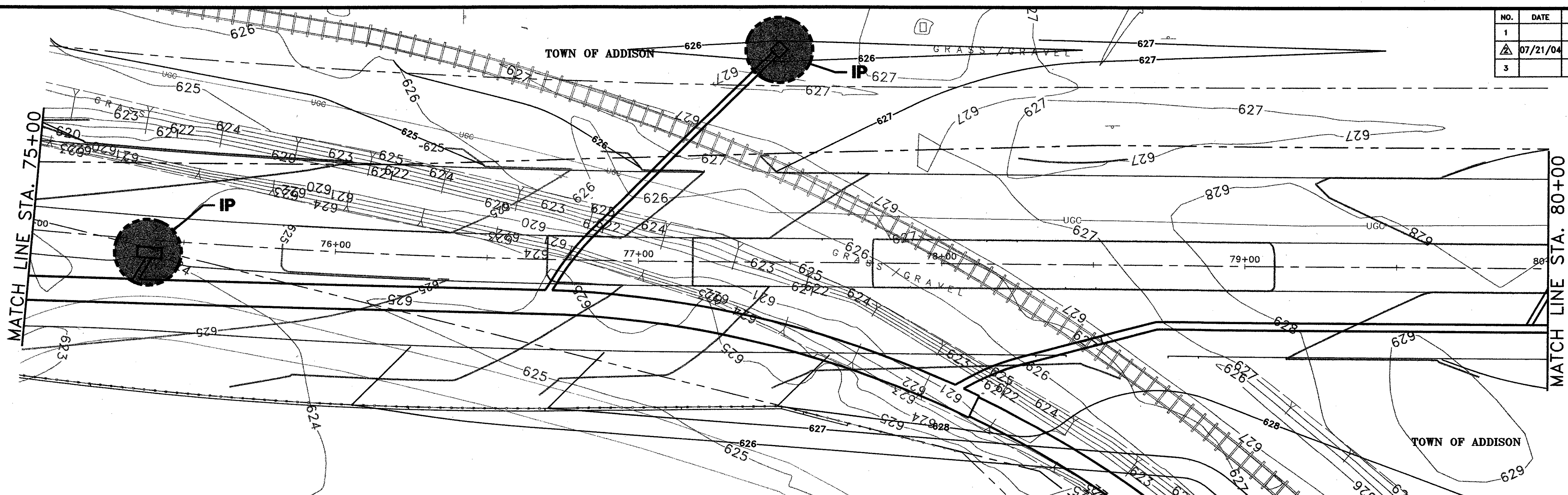


NO.	DATE	REVISION	APPROV.
1			
2	07/21/04	REVISED PER G & A	A.K.C.
3			



THE SEAL APPEARING ON THIS DOCUMENT WAS AUTHORIZED BY:
A. KATURA CURRY
ON 7-21-04.
ALTERATION OF A SEALED DOCUMENT WITHOUT PROPER NOTIFICATION TO THE RESPONSIBLE ENGINEER IS AN OFFENSE UNDER THE TEXAS ENGINEERING PRACTICE ACT.

- NOTES:**
- SEE SHEET EC-7 FOR EROSION CONTROL DETAILS..
 - AFTER CURB AND PAVEMENT HAVE BEEN CONSTRUCTED, CONTRACTOR SHALL PLACE SILT FENCE BEHIND CURB UNTIL VEGETATION BEHIND CURB HAS STABILIZED.

DATE:	MAY 2004	SCALE:	1"=20'	JOB NO.:	02-320
DRAWN:	G&A	DESIGN:	AKC	REVIEWED:	DWG:320EROSION01.DWG
ARAPAHO ROAD PHASE III					
EROSION CONTROL PLAN					
STA. 75+00 TO STA. 85+00					
TOWN OF ADDISON					
g&a			Grantham & Associates, Inc.		SHT. EC-6
1919 S. SHILOH ROAD, SUITE 310, LB. 8 GARLAND, TEXAS 75042			(972) 864-2333 (TEL) (972) 864-2334 (FAX)		