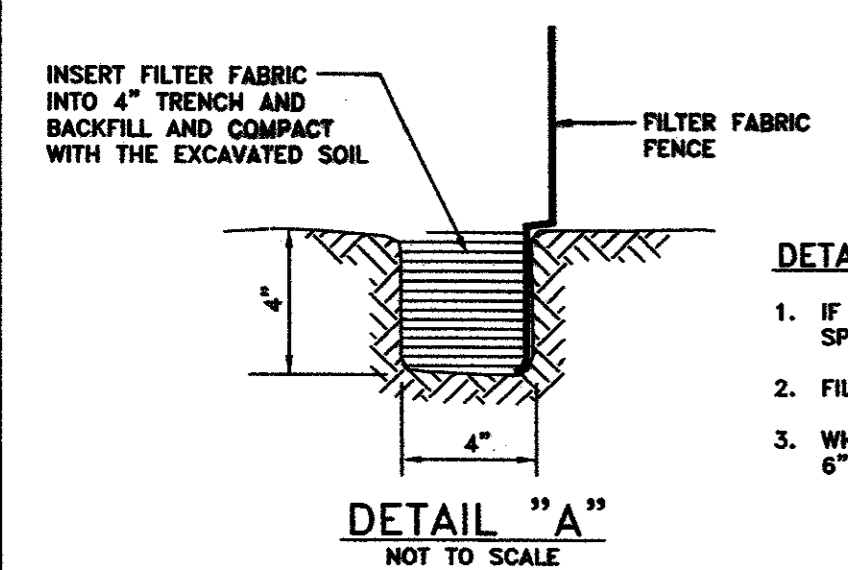
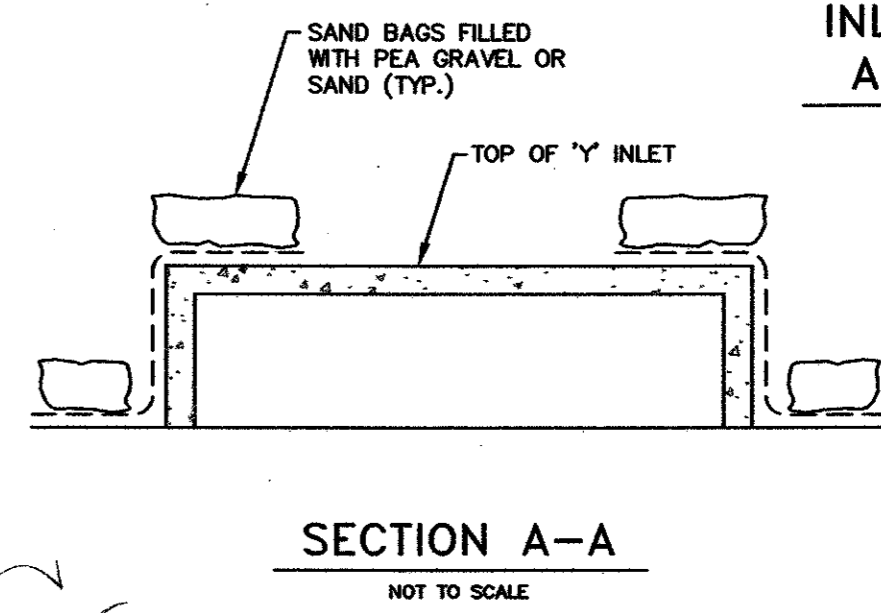
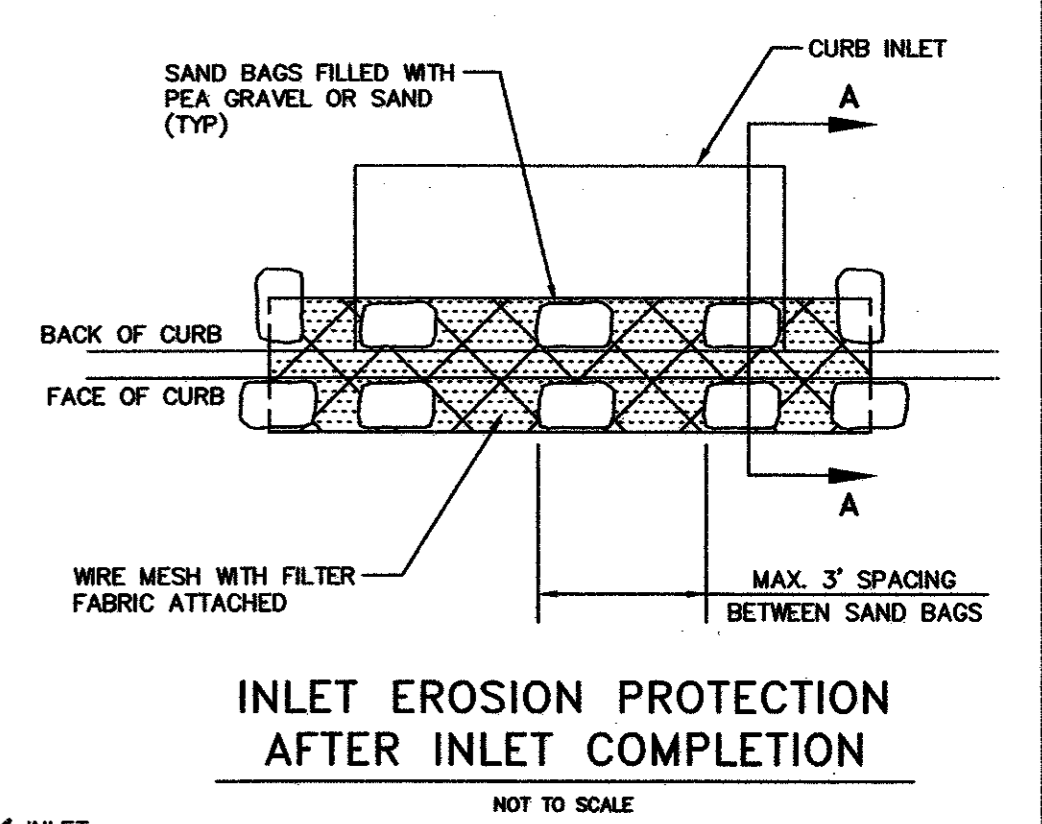
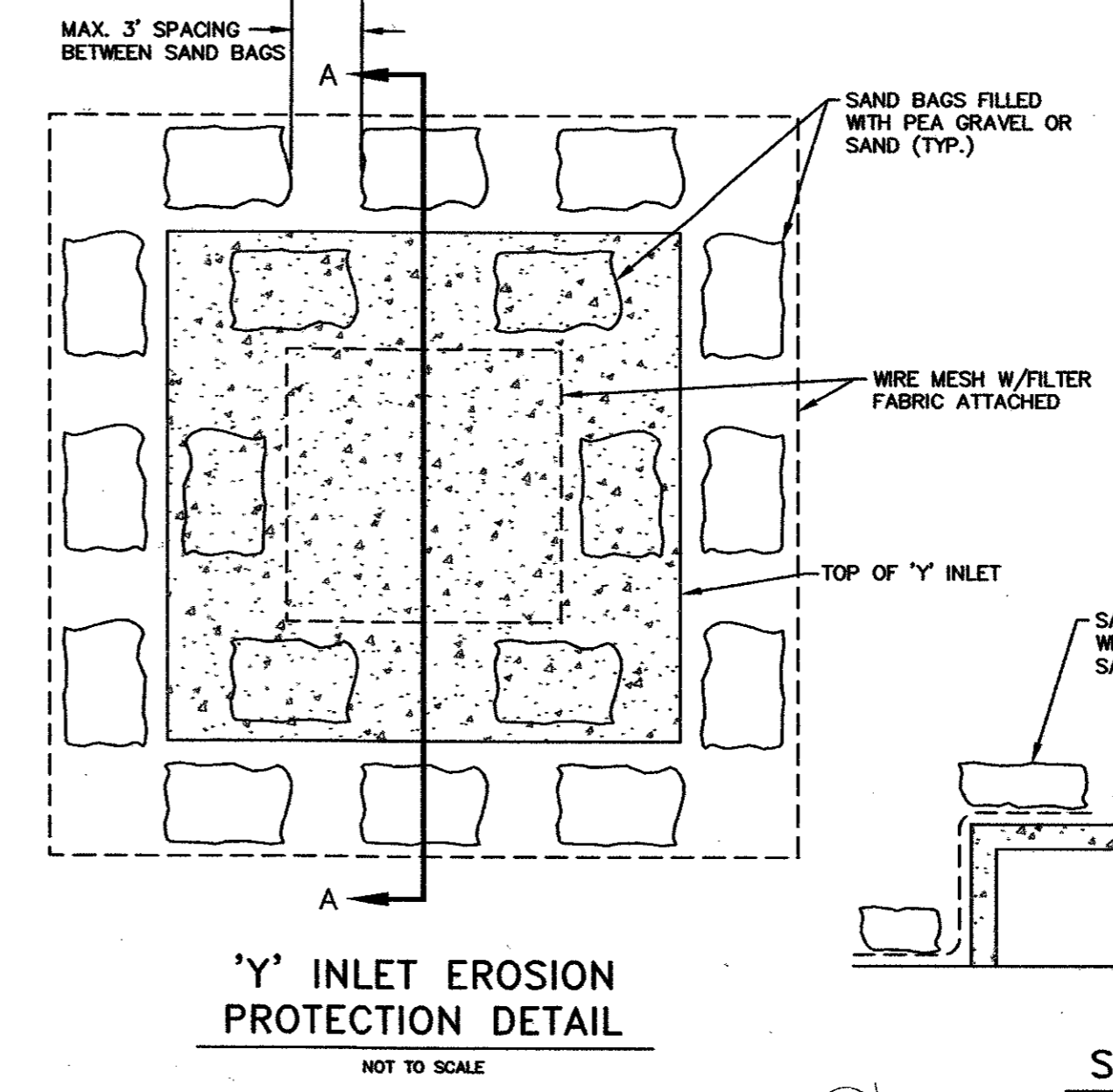
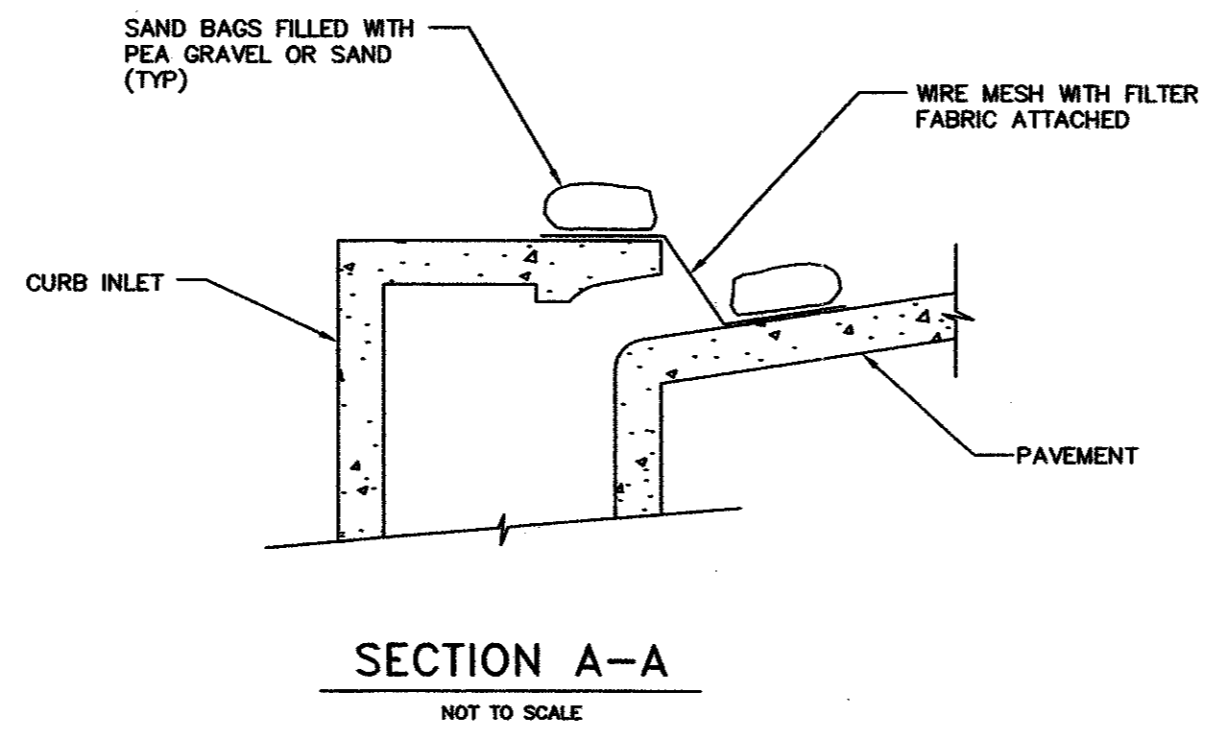
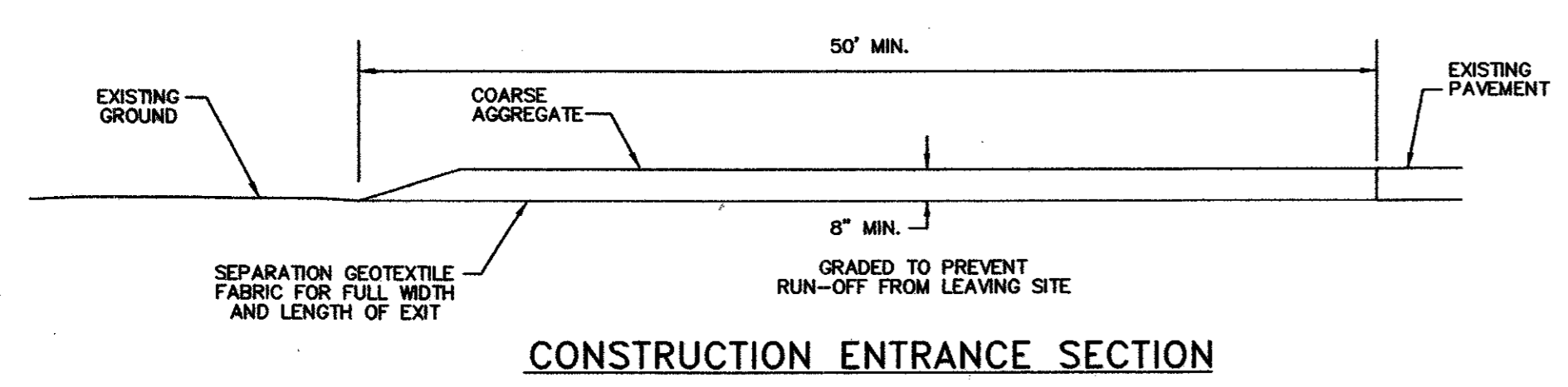
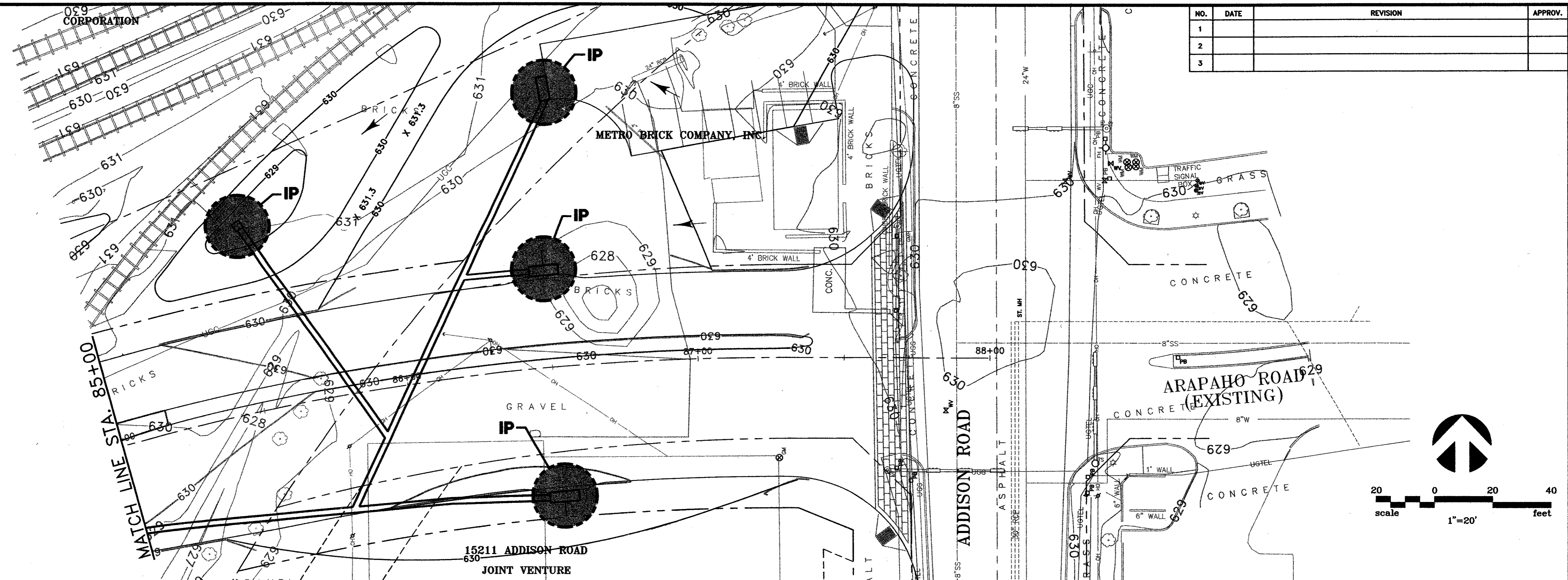
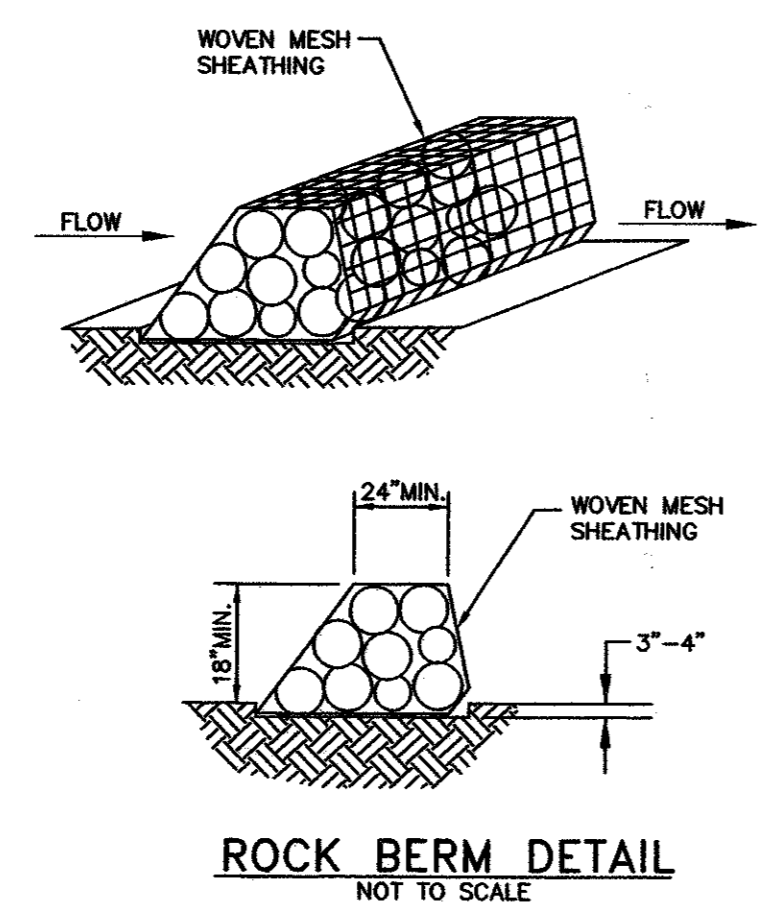
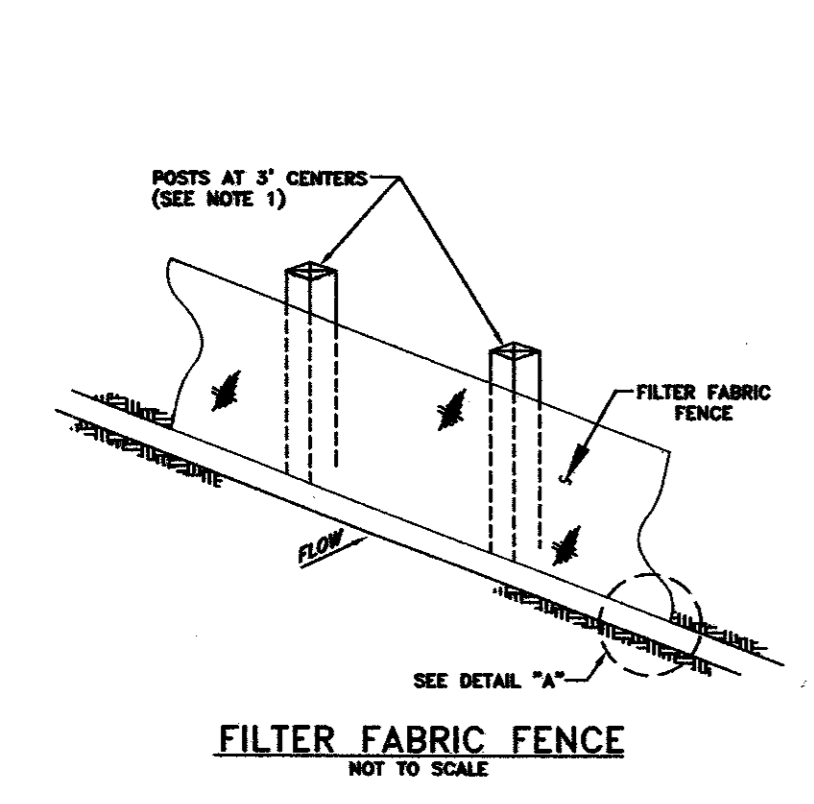


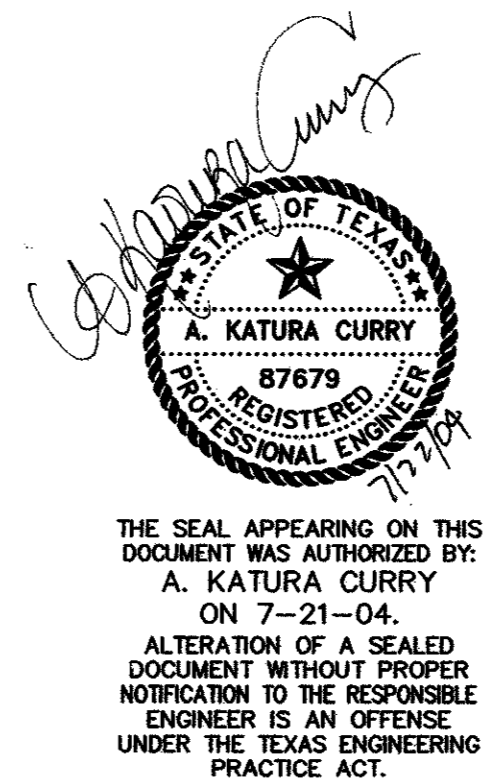
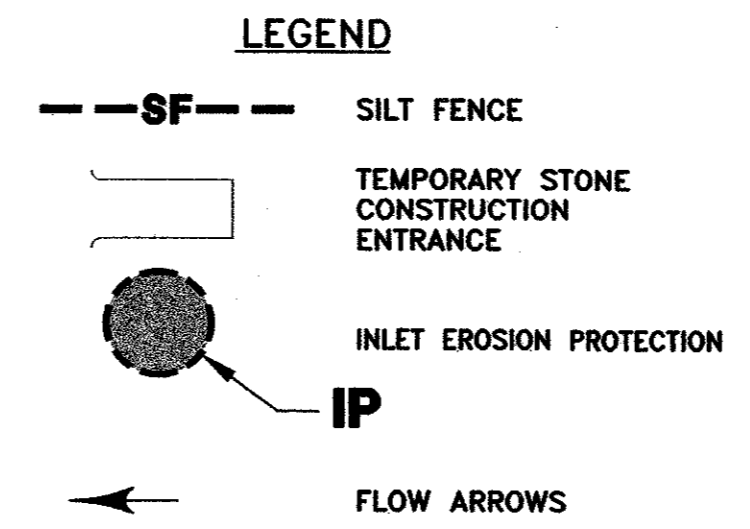
NO.	DATE	REVISION	APPROV.
1			
2			
3			



- DETAIL NOTES:**
- IF FACTORY PREASSEMBLED FENCE WITH SUPPORT NETTING IS USED, SPACING OF POSTS MAY INCREASE TO 8' MAXIMUM.
 - FILTER FABRIC SHALL BE AS PER ASTM D4833.
 - WHEN TWO SECTIONS OF FILTER FABRIC ADJOIN EACH OTHER, PROVIDE 6" OF OVERLAP AT THE POST AND FOLD.



- INLET PROTECTION NOTES:**
- WIRE MESH PER ASTM D4632 W/OPENING NOT TO EXCEED 1".
 - FILTER FABRIC SHALL BE AS PER ASTM D4833. FILTER FABRIC TO BE SECURED TO WIRE MESH WITH WIRE OR PLASTIC CABLE TIES.
 - SAND BAGS SHALL BE POLYETHYLENE OR COTTON BURLAP FABRIC 24" TO 30" IN LENGTH AND 15" TO 18" IN WIDTH. BAGS TO BE FILLED WITH PEA GRAVEL OR COARSE GRADE SAND TO APPROXIMATELY 40 POUNDS.
- NOTES:**
- AFTER CURB AND PAVEMENT HAVE BEEN CONSTRUCTED, CONTRACTOR SHALL PLACE SILT FENCE BEHIND CURB UNTIL VEGETATION BEHIND CURB HAS STABILIZED.



DATE:	MAY 2004	SCALE:	1"=20'	JOB NO.:	02-320
DRAWN:	G&A	DESIGN:	AKC	REVIEWED:	DWG:320EROSION01.DWG
ARAPAHO ROAD PHASE III					
EROSION CONTROL PLAN					
STA. 85+00 TO END					
TOWN OF ADDISON					
g&a Grantham & Associates, Inc.				SHT. EC-7	
1919 S. SHILOH ROAD, SUITE 310, L.B. 8 GARLAND, TEXAS 75042				(972) 864-2333 (TEL) (972) 864-2334 (FAX)	