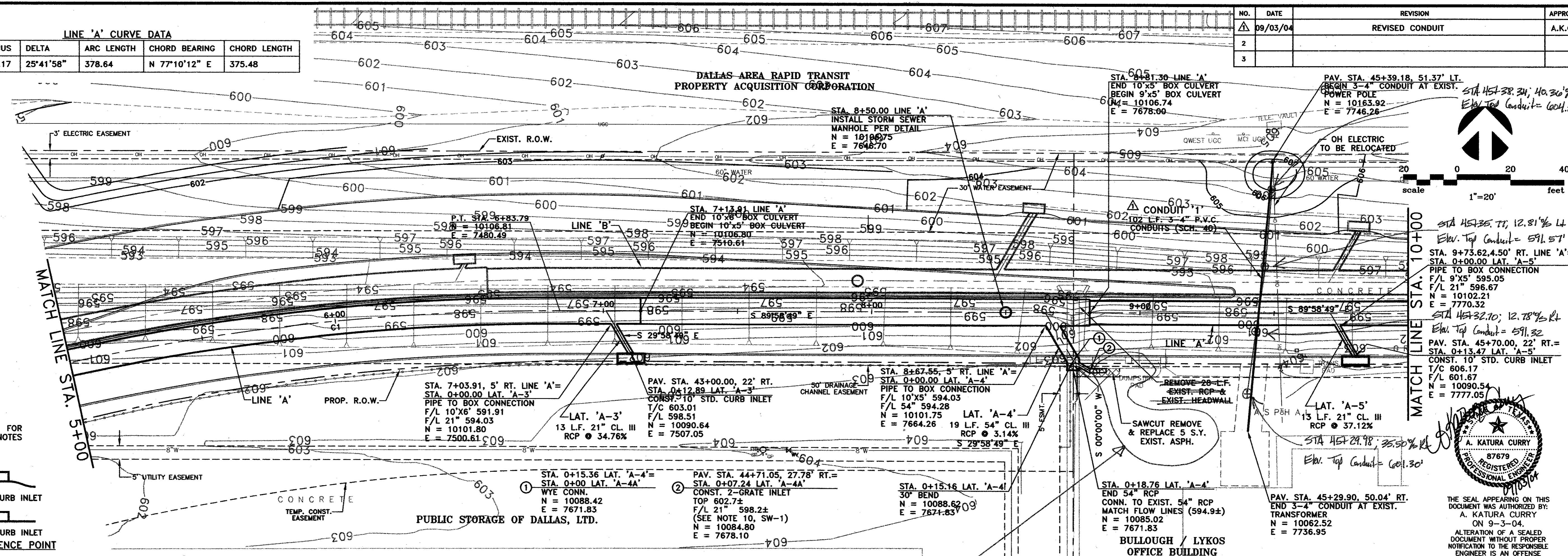
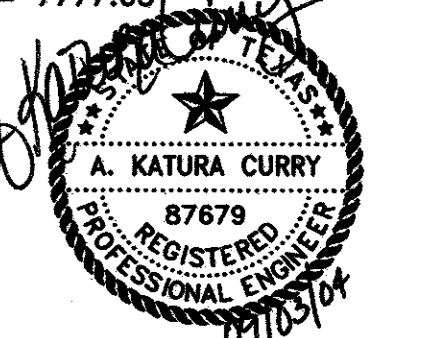
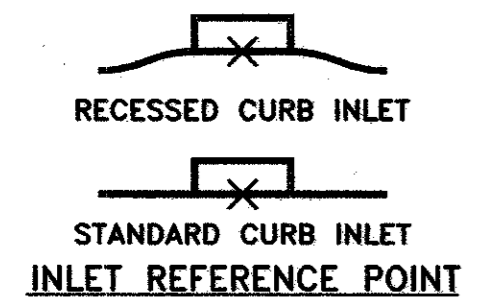


LINE 'A' CURVE DATA					
NUMBER	RADIUS	DELTA	ARC LENGTH	CHORD BEARING	CHORD LENGTH
C1	844.17	25°41'58"	378.64	N 77°10'12" E	375.48

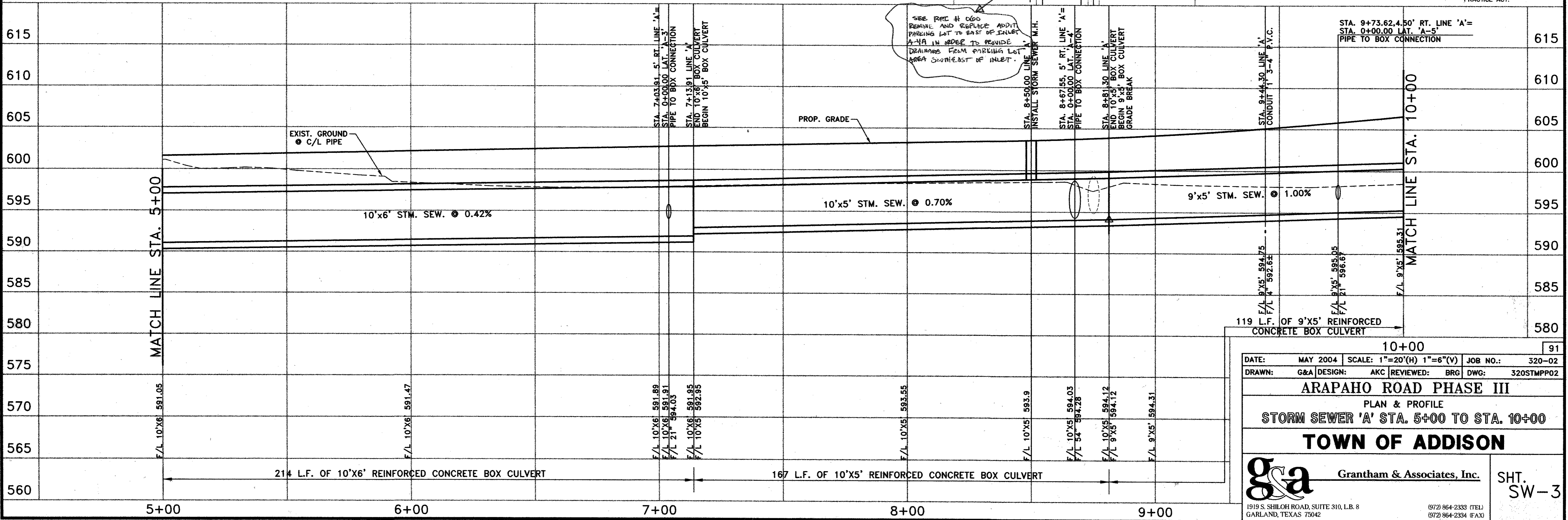
NO.	DATE	REVISION	APPROV.
1	09/03/04	REVISED CONDUIT	A.K.C.
2			
3			



NOTE  
REFER TO SW-1 FOR  
STORM SEWER NOTES



THE SEAL APPEARING ON THIS DOCUMENT WAS AUTHORIZED BY:  
A. KATURA CURRY  
ON 9-3-04.  
ALTERATION OF A SEALED DOCUMENT WITHOUT PROPER NOTIFICATION TO THE RESPONSIBLE ENGINEER IS AN OFFENSE UNDER THE TEXAS ENGINEERING PRACTICE ACT.



DATE:	MAY 2004	SCALE:	1"=20'(H) 1"=6'(V)	JOB NO.:	320-02
DRAWN:	G&A	DESIGN:	AKC	REVIEWED:	BRG
<b>ARAPAHO ROAD PHASE III</b>					
PLAN & PROFILE					
STORM SEWER 'A' STA. 5+00 TO STA. 10+00					
<b>TOWN OF ADDISON</b>					
<b>g&amp;a</b> Grantham & Associates, Inc.					SHT. SW-3
<small>1919 S. SHILOH ROAD, SUITE 310, L.B. 8 GARLAND, TEXAS 75042 (972) 864-2333 (TEL) (972) 864-2334 (FAX)</small>					