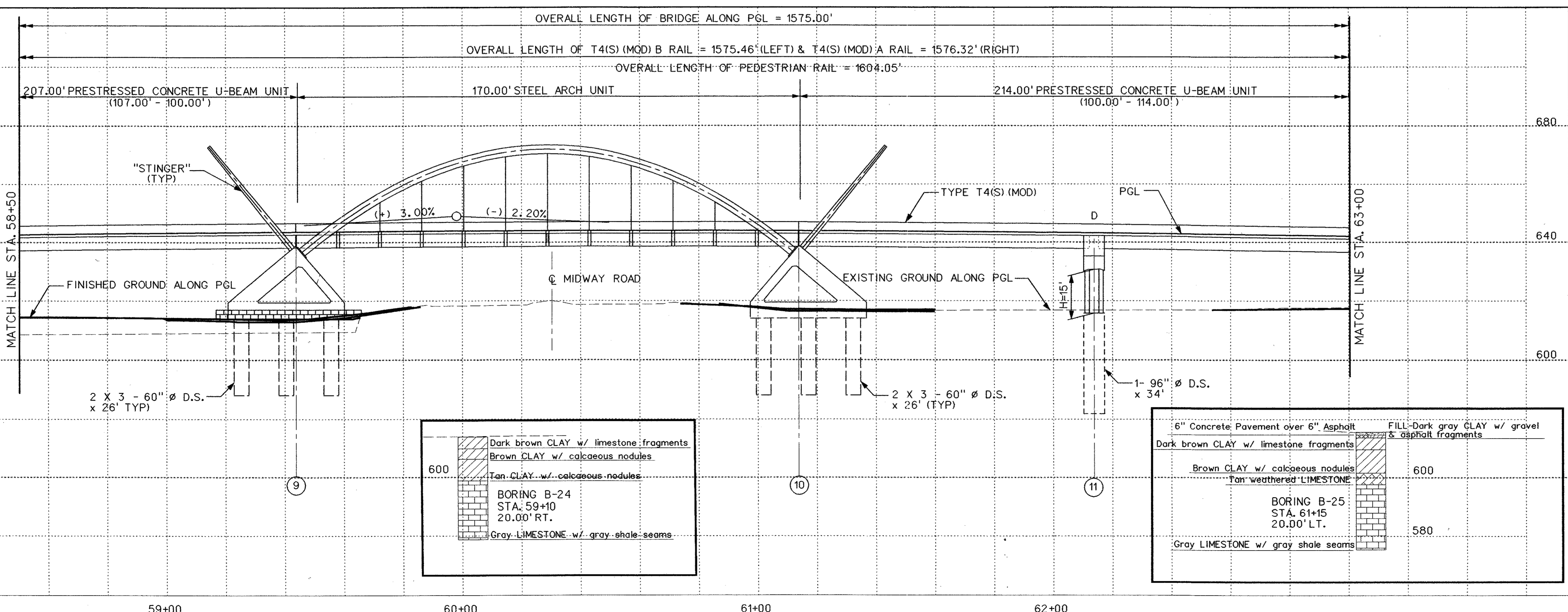
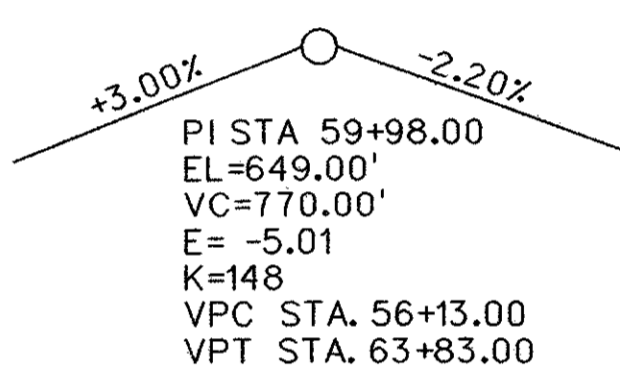


* SEE SHEET 4 OF 4 FOR LIGHT POLE LOCATIONS.

HORIZONTAL CURVE DATA
CURVE ARAP-3

PI STA 63+05.13
Δ=01°01'41" LT
D=01°08'45"
T=44.86'
L=89.72'
R=5000.00'
PC STA 62+60.27
PT STA 63+49.99

VERTICAL CURVE DATA



	Dark brown CLAY w/ limestone fragments
	Brown CLAY w/ calcaceous nodules
	Tan CLAY w/ calcaceous nodules
	BORING B-24 STA. 59+10 20.00' RT. Gray LIMESTONE w/ gray shale seams

6" Concrete Pavement over 6" Asphalt	FILL-Dark gray CLAY w/ gravel & asphalt fragments
Dark brown CLAY w/ limestone fragments	600
Brown CLAY w/ calcaceous nodules	600
Tan weathered LIMESTONE	600
BORING B-25 STA. 61+15 20.00' LT.	580
Gray LIMESTONE w/ gray shale seams	580



NO.	DATE	REVISION	APPROV.
241			
URS GREYSTONE CENTRE 3010 LBJ FREEWAY, SUITE 1500 DALLAS, TX 75234			
ARAPAHO ROAD - PHASE III SURVEYOR BOULEVARD TO ADDISON ROAD			
BRIDGE LAYOUT			
SHEET 3 OF 4			
TOWN OF ADDISON, TEXAS			
Design	Drawn	DATE	SCALE
Check	Check	05-07-04	PROJECT NO. 25768 SHEET NO. BR-3

7/2/2004 10:32:52 AM