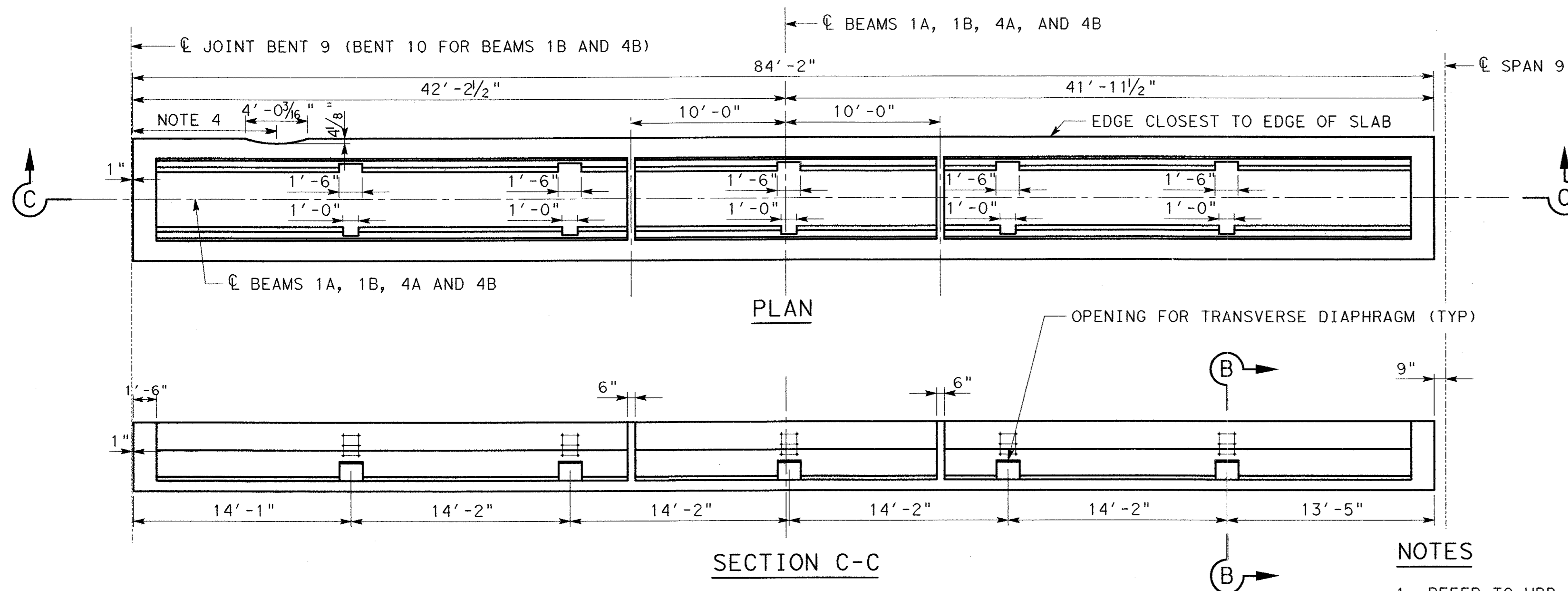
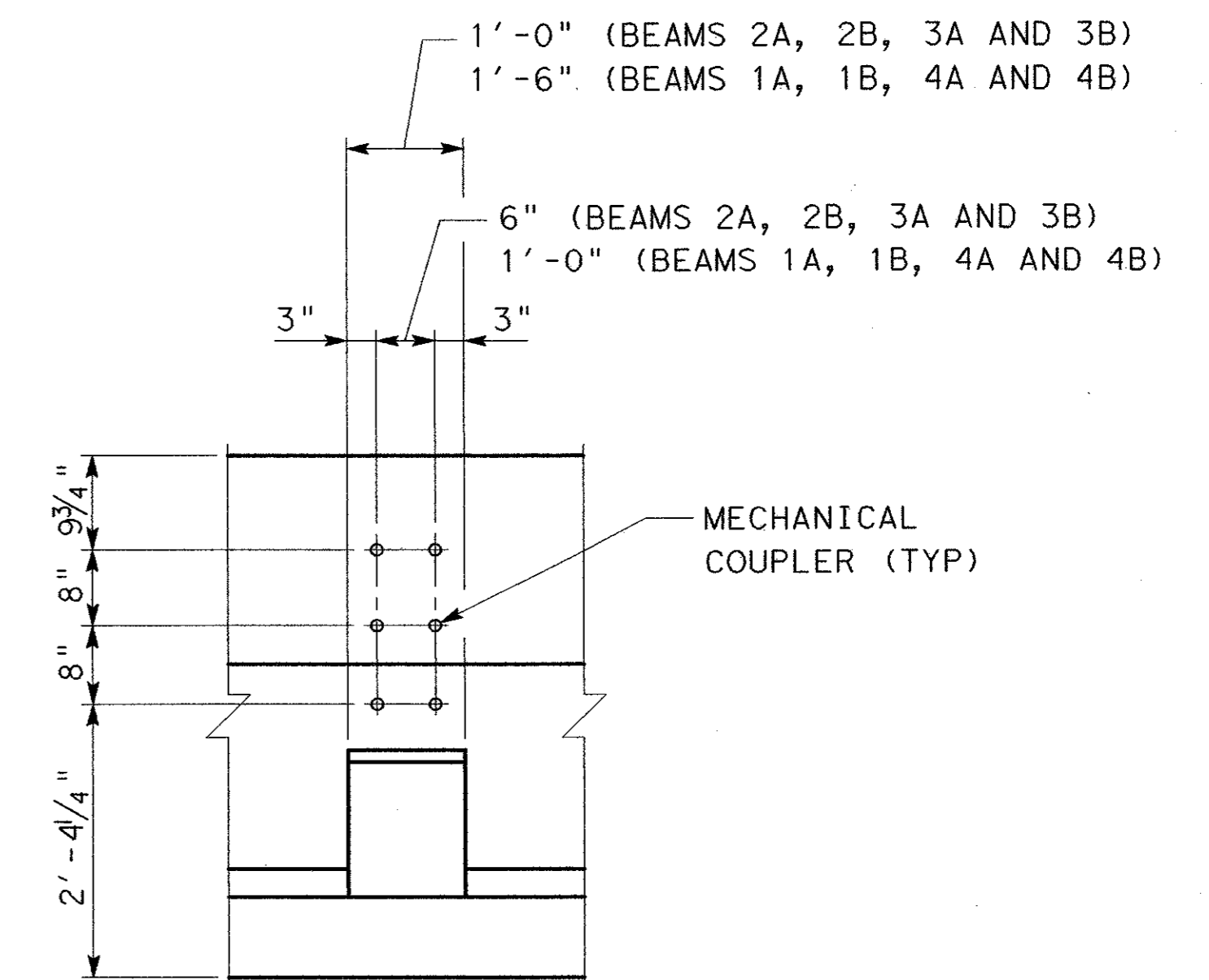
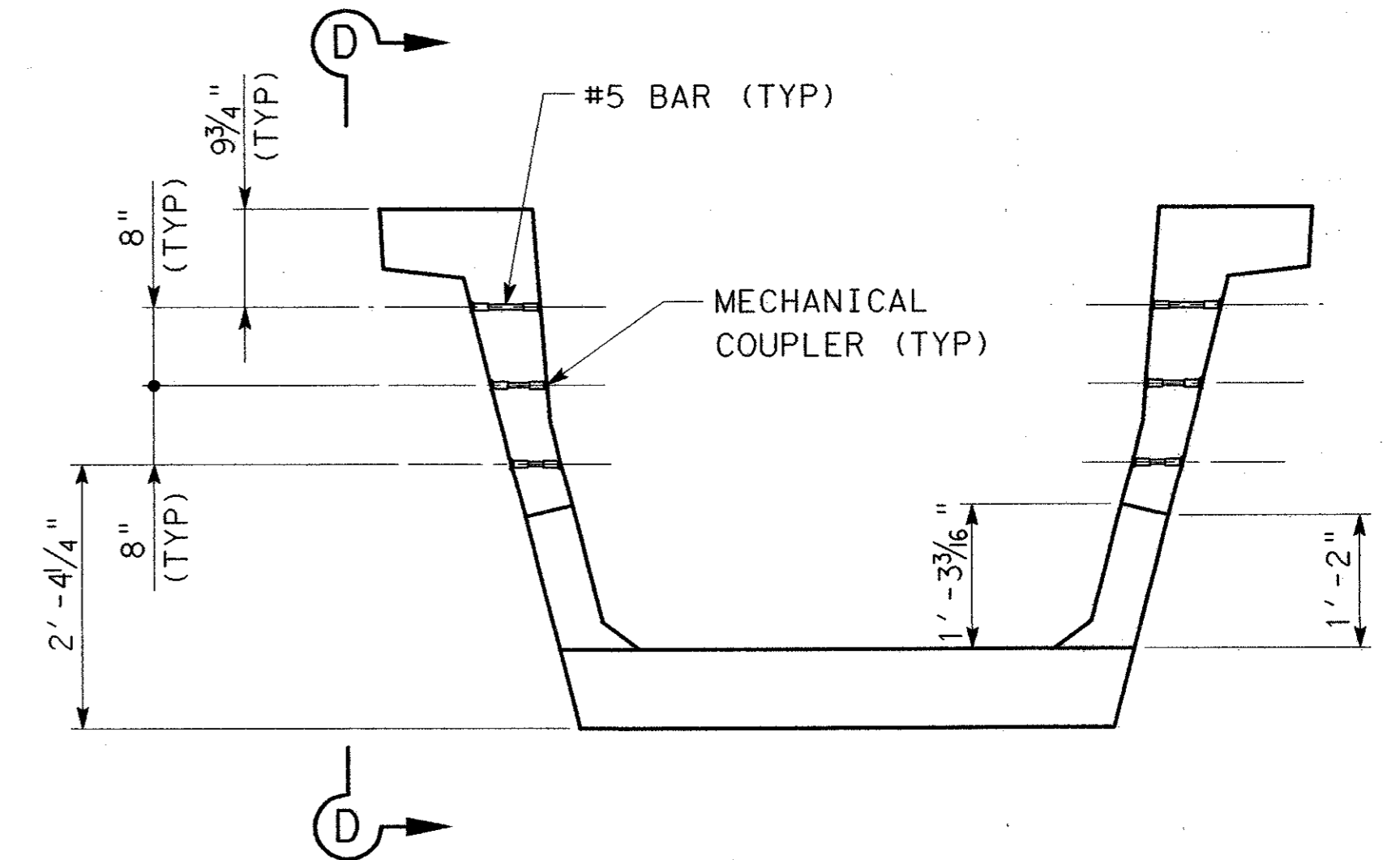


**BEAMS 2A, 2B, 3A, AND 3B**



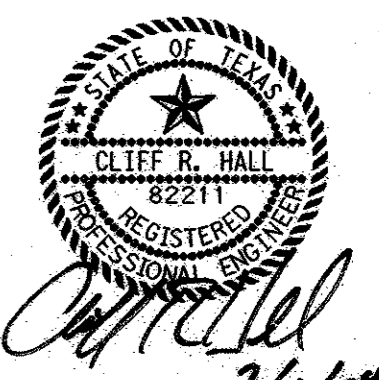
**BEAMS 1A, 1B, 4A, AND 4B**

(BEAM 1A AND 4B SHOWN, BEAMS 1B AND 4A ARE SIMILAR BUT OPPOSITE HAND)



**NOTES**

1. REFER TO UBB STANDARDS FOR ADDITIONAL DETAILS.
2. FOR ADD'L NON-STANDARD U-BEAM REINFORCEMENT, SEE SHEET BR-43.
3. CUT BARS R AND P TO MISS OPENINGS FOR TRANSVERSE DIAPHRAGMS. CUT BARS U AND X TO MISS NOTCH-OUT IN TOP FLANGE FOR ARCH RIB.
4. NOTCH-OUT TOP FLANGE FOR BEAMS 1A AND 1B TO CLEAR ARCH RIB. SEE SLAB PLAN FOR UNIT 4.  
DISTANCE TO  $\phi$  OF NOTCH-OUT - BEAM 1A - 9'-3/2"  
DISTANCE TO  $\phi$  OF NOTCH-OUT - BEAM 1B - 9'-9"



|   |       |             |           |
|---|-------|-------------|-----------|
| NO.   | DATE  | REVISION    | APPROV.   |
|   |       |             |           |
|   |       |             |           |
| GREYSTONE CENTRE<br>5010 LBJ FREEWAY, SUITE 1300<br>DALLAS, TX 75234  |       |             |           |
| <b>ARAPAHO ROAD - PHASE III</b><br>SURVEYOR BOULEVARD TO ADDISON ROAD |       |             |           |
| <b>U-BEAM DETAILS</b><br>UNIT 4                                       |       |             |           |
| SHEET 2 OF 2  |       |             |           |
| <b>TOWN OF ADDISON, TEXAS</b>   |       |             |           |
| Design  | Drawn | DATE        | SCALE     |
| Check   | Check | 05-07-04    | NONE      |
|   |       | PROJECT NO. | SHEET NO. |
|   |       | 25768       | BR-44     |