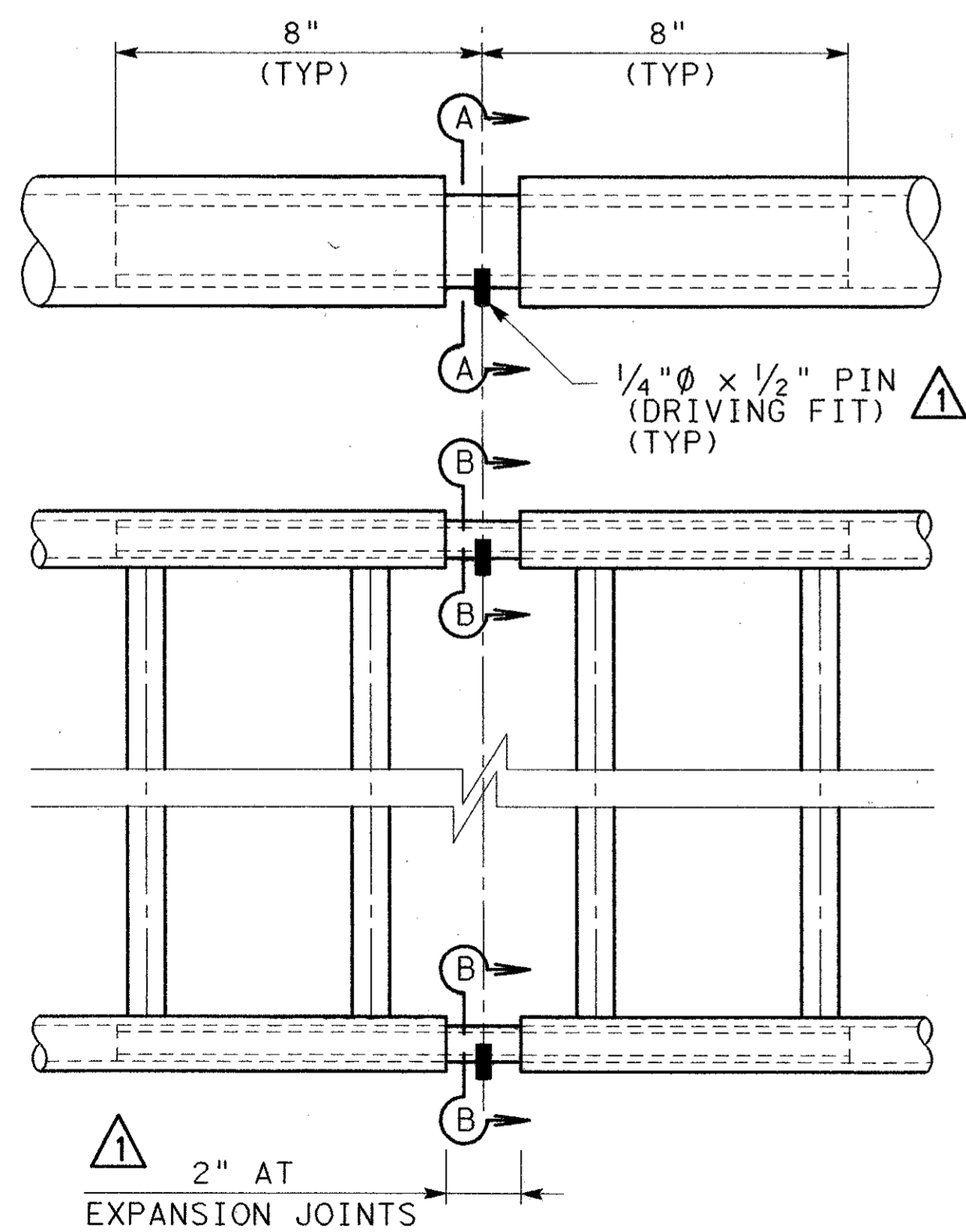


ROADWAY ELEVATION OF RAIL
(LOOKING SOUTH)

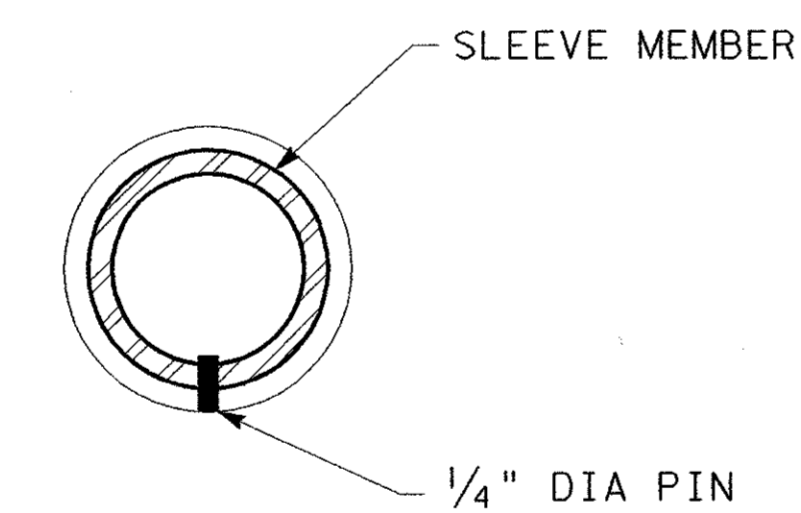
① POST UPRIGHT SHALL BE POSITIONED SO THAT THE BASE PLATE IS A MINIMUM OF 2" FROM THE BACK RAIL OF THE EXPANSION JOINT. FURTHER OFFSET MAY BE REQUIRED DEPENDING UPON LENGTH OF EXPANSION JOINT STUDS. ANCHOR BOLTS FOR RAIL PANEL ARE NOT TO INTERFERE WITH EXPANSION JOINT STUDS.

GENERAL NOTES:

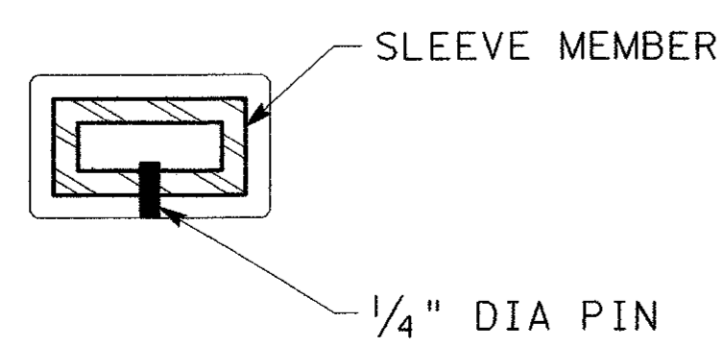
- DESIGNED IN ACCORDANCE WITH AASHTO "STANDARD SPECIFICATIONS FOR HIGHWAY BRIDGES" - 16TH EDITION WITH CURRENT INTERIM SPECIFICATIONS.
- PIPE FOR PIPE RAIL SHALL CONFORM TO ASTM A53 GRADE B OR A-501. POSTS AND INTERMEDIATE HORIZONTALS SHALL BE ASTM A500, GRADE B. PLATES AND RISERS SHALL BE ASTM A709, GRADE 50.
- ALL ANCHOR BOLTS, NUTS, WASHERS AND BOTTOM PLATES TO BE INCLUDED IN UNIT PRICE BID FOR RAILING.
- FACE OF RAIL AND POSTS SHALL BE VERTICAL TRANSVERSELY UNLESS OTHERWISE APPROVED BY THE ENGINEER. POSTS SHALL BE PERPENDICULAR TO ADJACENT ROADWAY GRADE. GROUT MAY BE USED UNDER BASE PLATES IF NECESSARY.



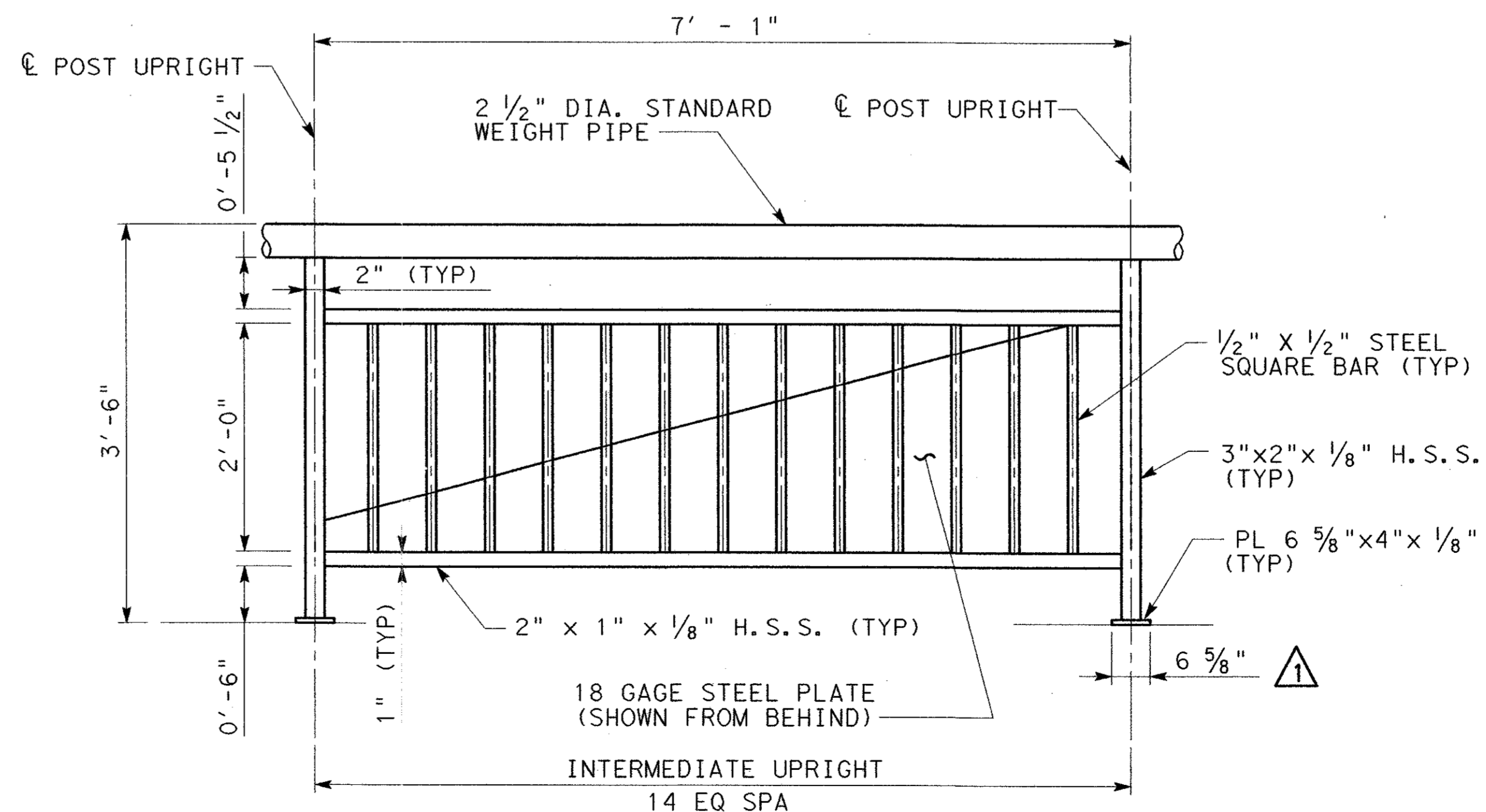
① **PIPE SPLICE DETAIL**
(AT EXPANSION JOINTS)



SECTION CUT A-A



① **SECTION CUT B-B**



TYPICAL RAIL PANEL ELEVATION



				300
1	05/24/04	ADDENDUM CHANGES		CRH
NO.	DATE	REVISION		APPROV.
URS GREYSTONE CENTRE 3010 LBJ FREEWAY, SUITE 1300 DALLAS, TX 75234				
ARAPAHO ROAD - PHASE III				
SURVEYOR BOULEVARD TO ADDISON ROAD				
PEDESTRIAN RAIL DETAILS				
SHEET 1 OF 2				
TOWN OF ADDISON, TEXAS				
Design	Drawn	DATE	SCALE	PROJECT NO. SHEET NO.
Check	Check	05-07-04	25768	BR-62