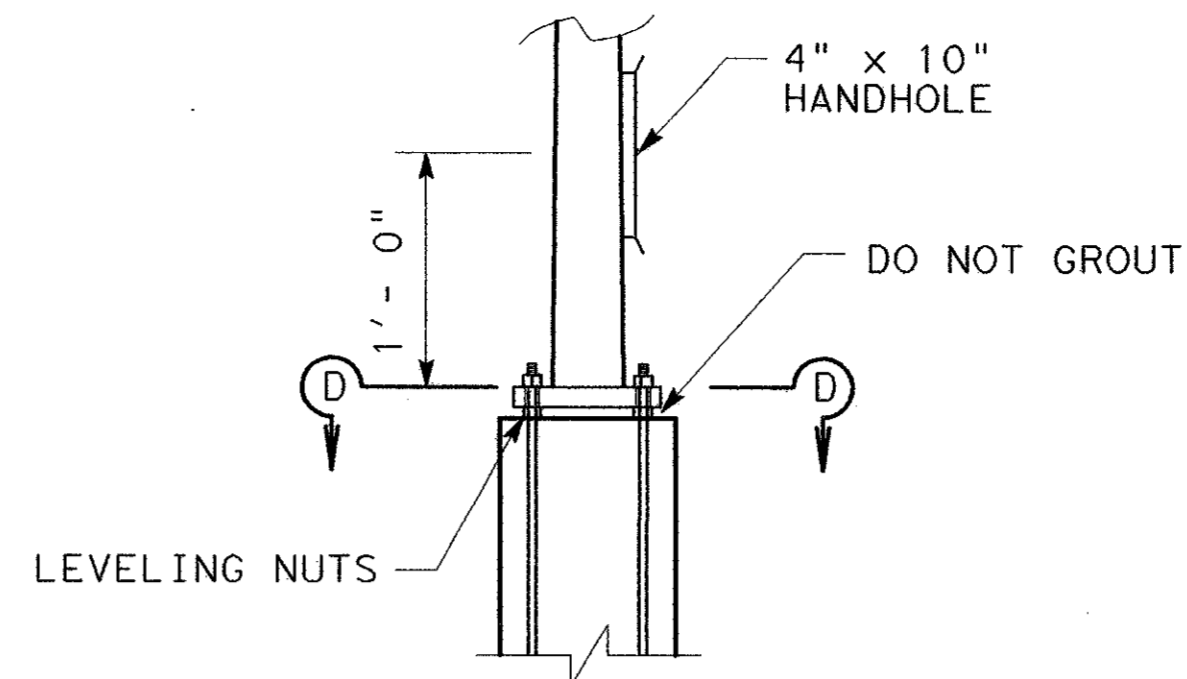


PLAN VIEW AT TOP OF BARRIER

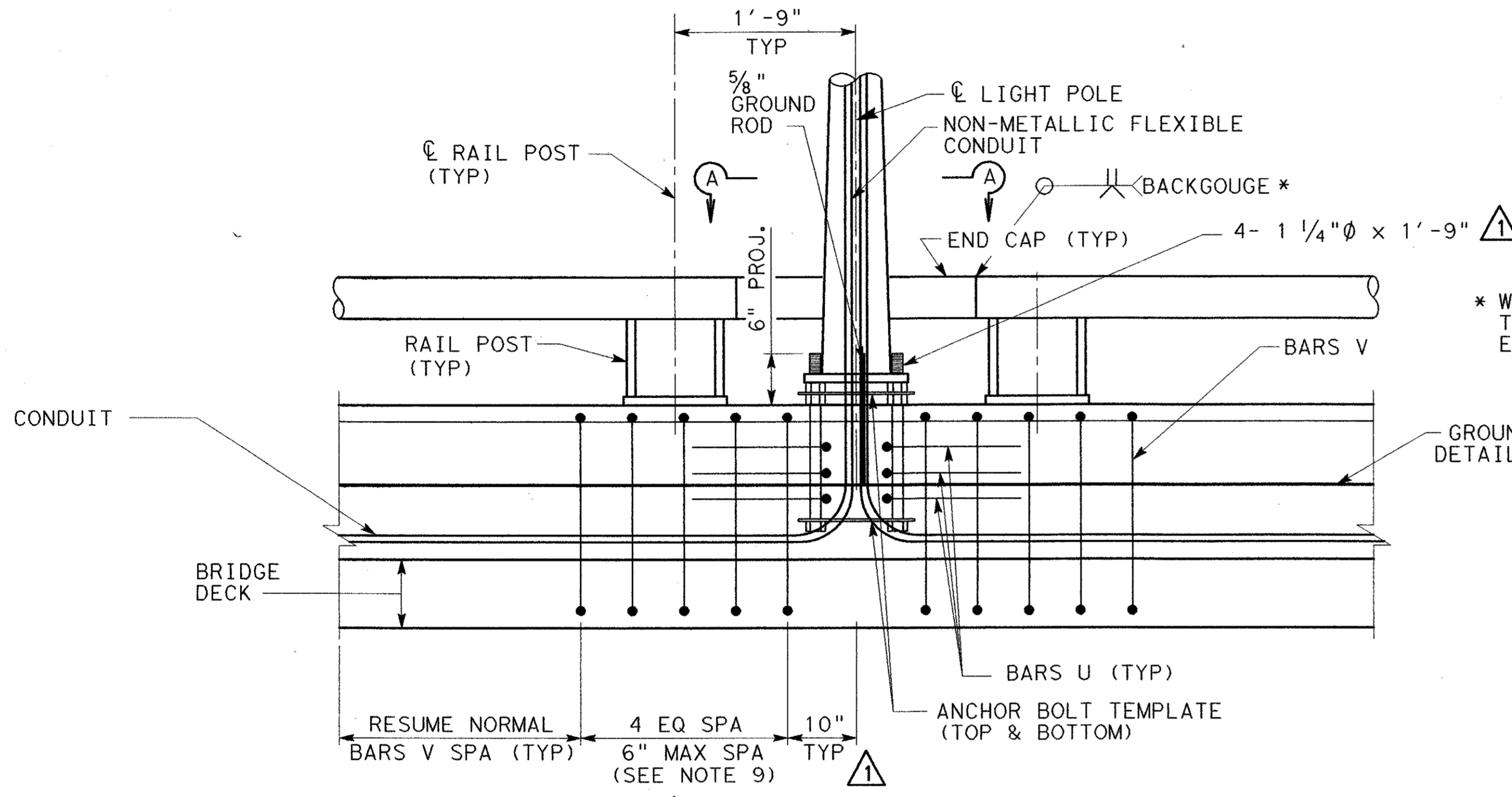


POLE DETAIL

FOUR 1/4" ANCHOR BOLTS (ASTM A193 GRADE B7 WITH THE TOP THREADED NOT LESS THAN 6 INCHES) OR ANCHOR RODS (ASTM A321). THE TOP END OF THE BOLTS, OR RODS, SHALL BE GALVANIZED NOT LESS THAN 8 INCHES AND FURNISHED WITH NUTS (ASTM A563, GRADE DH, GALVANIZED HEAVY HEX) AND FLAT AND LOCK WASHERS AND TEMPLATES.

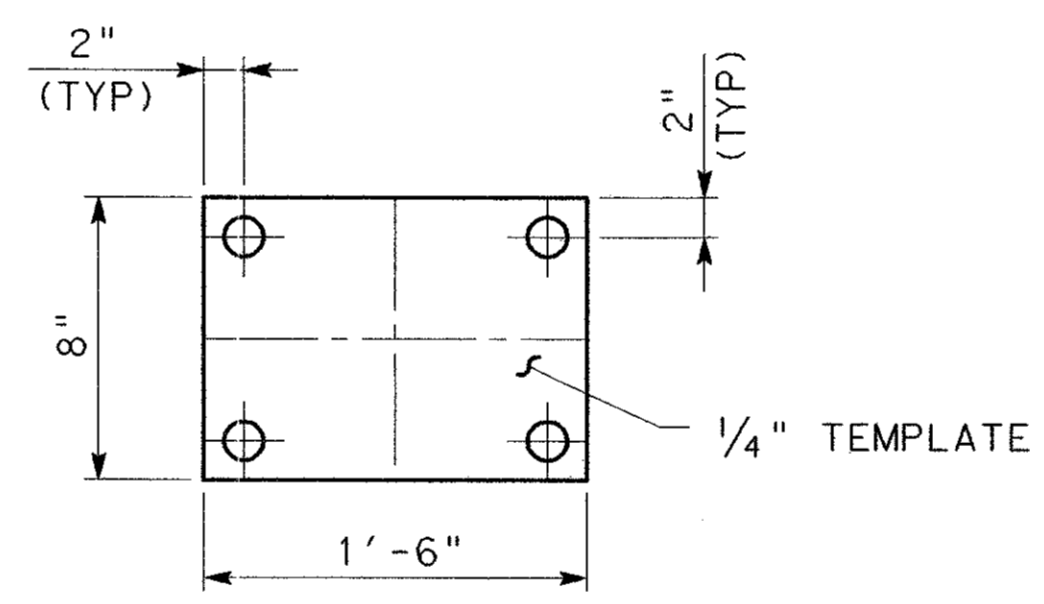
* WELD SIZE TO MATCH RAIL MEMBER THICKNESS. WELD IS TYPICAL TO ALL END CAPS AROUND LIGHTPOLES.

- GENERAL NOTES:**
- POLES ON BRIDGE BARRIER SHALL BE GROUNDED USING PROPER GROUNDING MATERIALS AND PRACTICES AS DESCRIBED IN NEC, 2002.
 - ANCHOR BOLTS AND GROUND RODS, AS SHOWN SHALL NOT BE PAID FOR DIRECTLY, BUT WILL BE CONSIDERED SUBSIDIARY TO THE VARIOUS BID ITEMS.
 - SEE LIGHTING PLANS FOR LIGHT POLE TYPE AND BRIDGE LAYOUTS FOR LOCATIONS.
 - ALL CONDUIT BENDS SHALL BE IN ACCORDANCE WITH THE NATIONAL ELECTRIC CODE, 2002.
 - JUNCTION BOX SHALL BE CAST IRON, AND SHALL BE MOUNTED FLUSH WITH CONCRETE SURFACE OF T4(S) (-0, + 1/2") WITH CONCRETE SURFACE OF T4(S) (MOD) A AND T4(S) (MOD) B. CAST IRON BOXES SHALL HAVE A GROUNDING STUD OR LUG AND SHALL BE GROUNDED. SEE ED(1) STANDARD FOR TYPES.
 - ALTERNATE FORMING METHODS MAY BE USED ONLY WITH THE PRIOR APPROVAL OF THE ENGINEER.
 - THE CONTRACTOR SHALL MAKE ADJUSTMENTS IN CONDUIT LOCATION, CONDUIT BEND, CONDUIT INSTALLATION, JUNCTION BOX AND LOCATION AND JUNCTION BOX MATERIAL BASED UPON FINAL INSTALLATION CONDITION.
 - ALL REBAR CALLOUTS AND DESIGNATIONS PER TxDOT STANDARD TYPE T4(S) (MOD) UNLESS OTHERWISE NOTED.
 - MAINTAIN 3" CLEARANCE BETWEEN RAIL POST ANCHOR BOLTS AND BARS V.

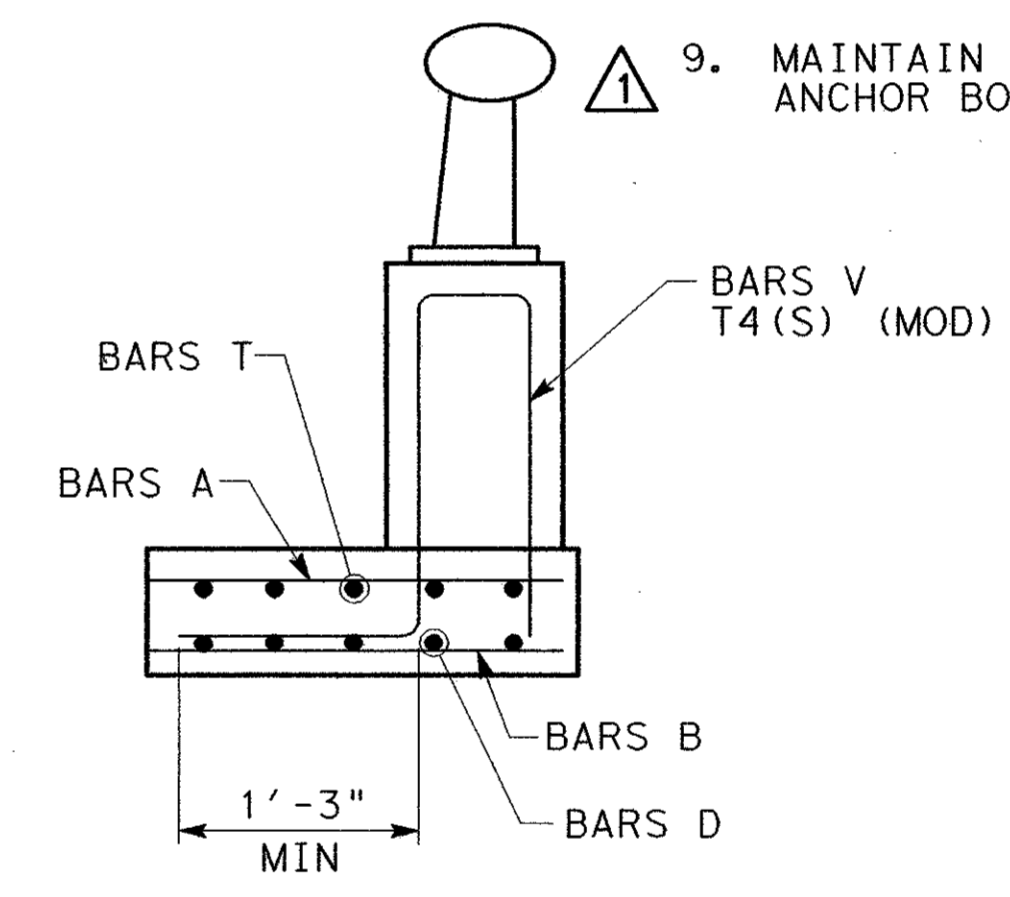


ELEVATION

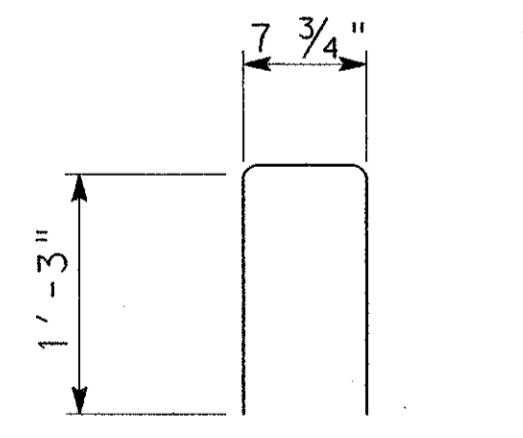
GROUNDING CONDUCTOR. SEE LIGHTING DETAILS FOR SIZE AND LOCATION



ANCHOR BOLT TEMPLATE DETAIL



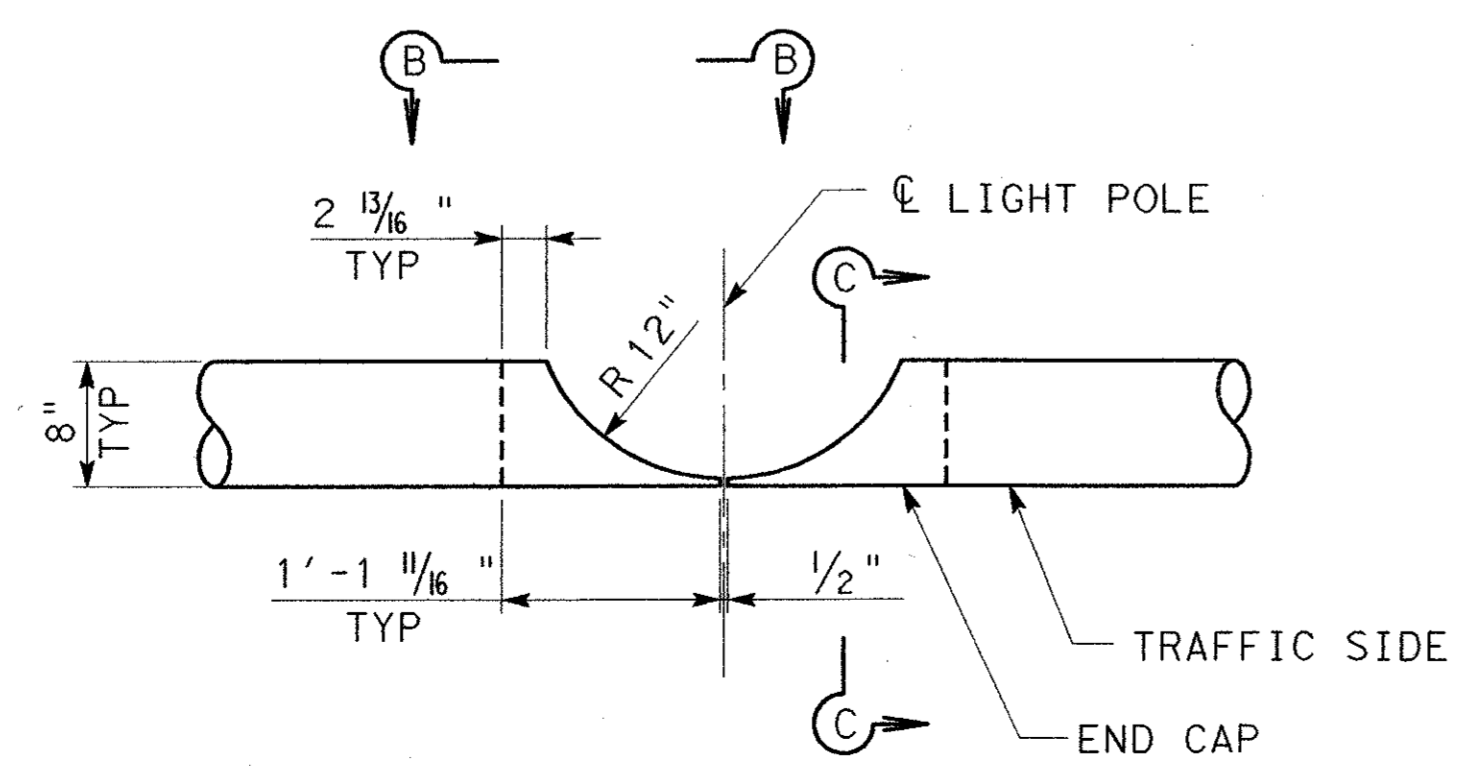
TYPICAL SECTION TYPE T4(S) (MOD) A



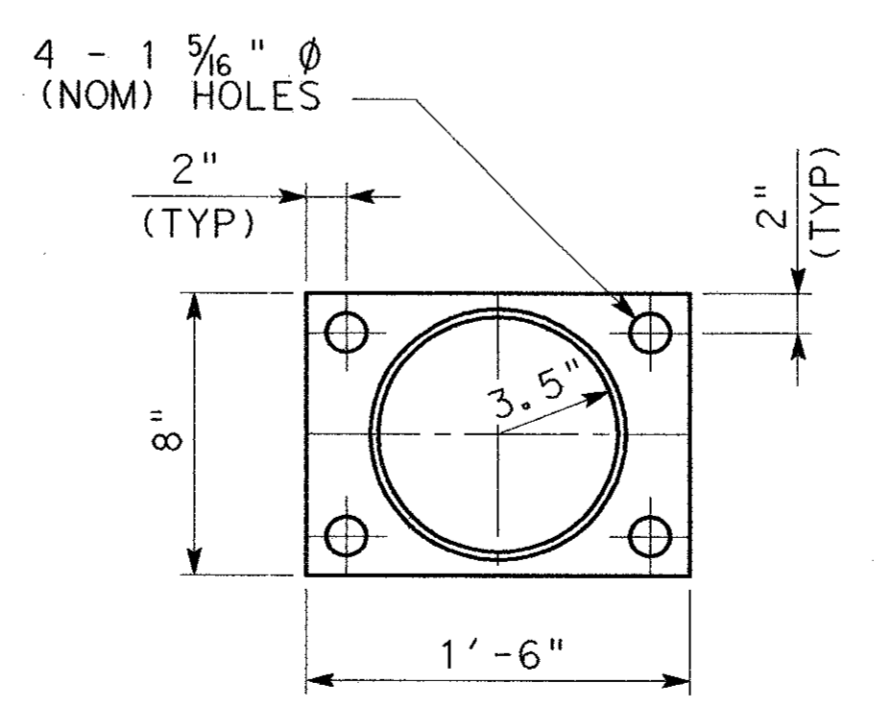
SECTION B-B

TACK WELD INSIDE SEAM ALL AROUND INSIDE DIAMETER OF MEMBER.

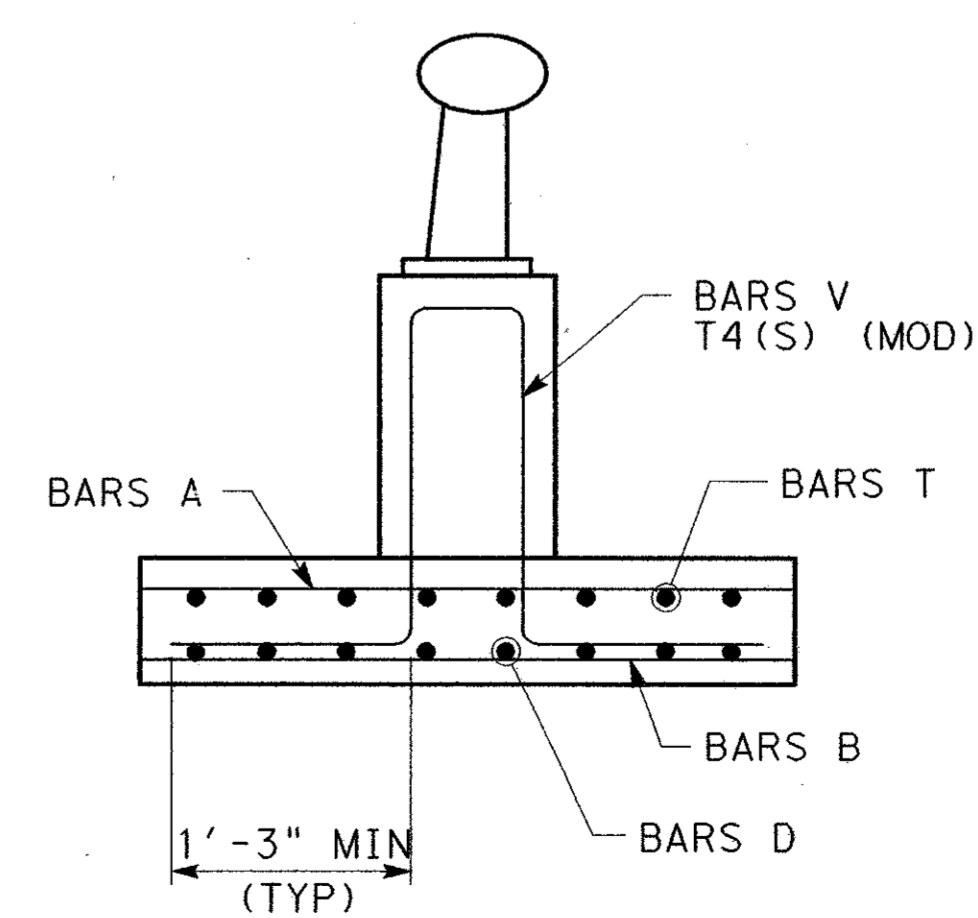
SECTION C-C



SECTION A-A



SECTION D-D



TYPICAL SECTION TYPE T4(S) (MOD) B



				306	
1	05/24/04	ADDENDUM CHANGES		CRH	
NO.	DATE	REVISION		APPROV.	
URS GREYSTONE CENTRE 5010 LBJ FREEWAY, SUITE 1300 DALLAS, TX 75254					
ARAPAHO ROAD - PHASE III					
SURVEYOR BOULEVARD TO ADDISON ROAD					
LIGHT POLE ANCHORAGE DETAILS					
TOWN OF ADDISON, TEXAS					
Design	Drawn	DATE	SCALE	PROJECT NO.	SHEET NO.
Check	Check	05-07-04		25768	BR-68

7/2/2004 10:33:06 AM

\\urssgd1\data\projects\arapaho_road_bridge\loads\structures\lighting_details\ar3\lightrail.dgn