

DISCLAIMER: The use of this standard is governed by the "Texas Engineering Practice Act". No warranty of any kind is made by TxDOT for any purpose whatsoever. TxDOT assumes no responsibility for the conversion of this standard to other formats or for incorrect results or damages resulting from its use.

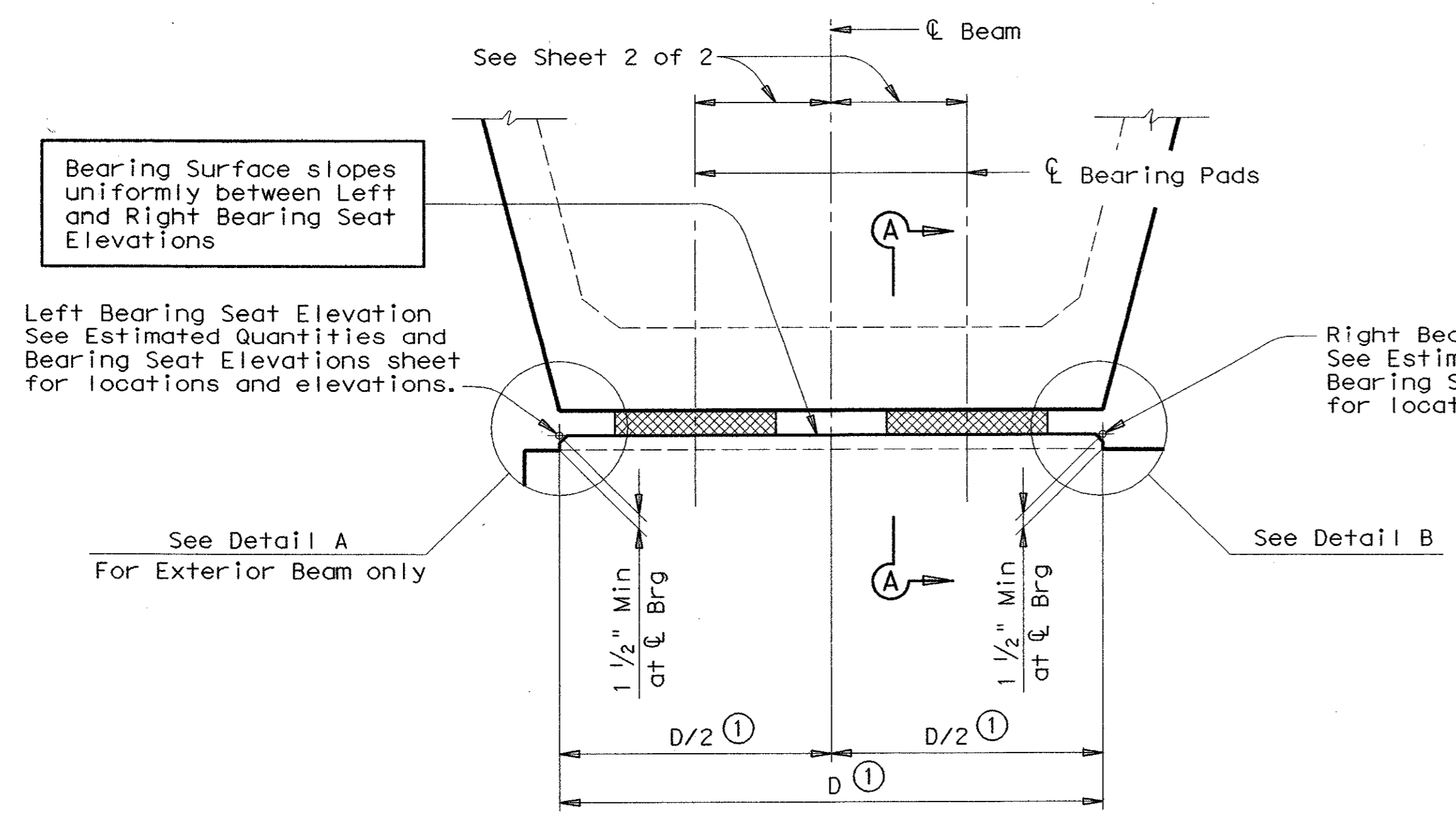
LEVELS DISPLAYED

1	2
3	4
5	6
7	8
9	10
11	12
13	14
15	16
17	18
19	20
21	22
23	24
25	26
27	28
29	30
31	32
33	34
35	36
37	38
39	40
41	42
43	44
45	46
47	48
49	50
51	52
53	54
55	56
57	58
59	60
61	62
63	64
65	66
67	68
69	70
71	72
73	74
75	76
77	78
79	80
81	82
83	84
85	86
87	88
89	90
91	92
93	94
95	96
97	98
99	100

STANDARD BEARING SEAT DIMENSION "D"

BEAM ANGLE	STANDARD END
75° + thru 90°	4'-6"
60° + thru 75°	5'-0"
45° thru 60°	5'-6"

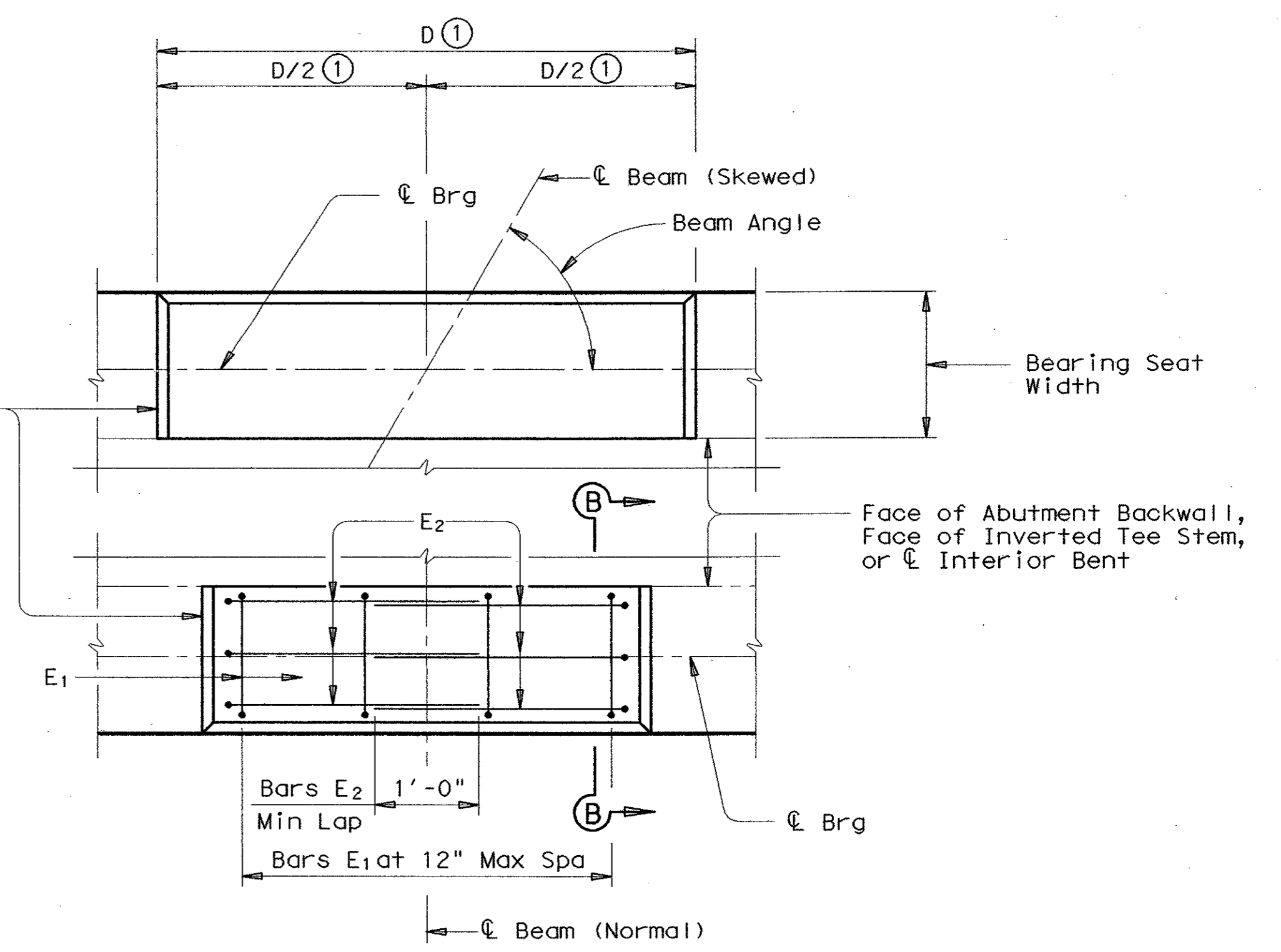
Standard Bearing Seat Dimensions shown are adequate for up to and including two 9" x 19" pads.



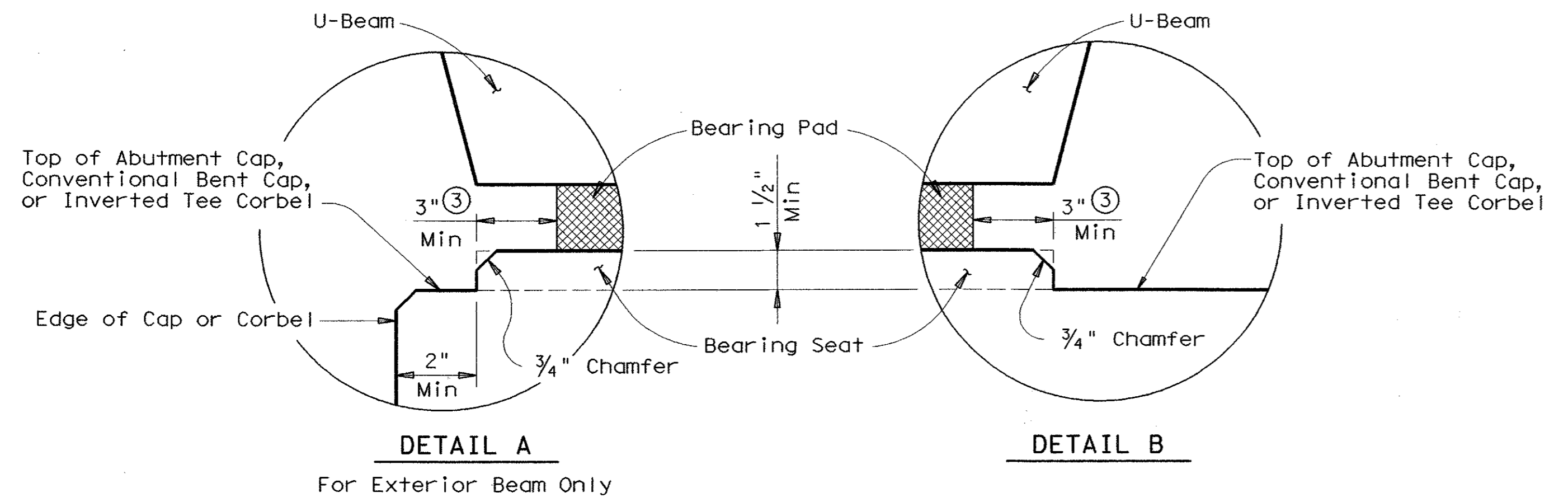
VIEW OF BEARING SEAT BUILD-UP

Showing Standard Beam End with Two-Pad Condition. All other end conditions similar.

- ① Measured along ℓ of Bearing. See "Estimated Quantities and Bearing Seat Elevations" sheet for "D". Dimension "D" should not conflict with minimum edge distances shown on Details "A" and "B".
- ② Unless noted otherwise in the plans.
- ③ Parallel to ℓ Bearing. Minimum dimensions apply to One-Pad and Two-Pad Conditions.
- ④ Bearing Seat Build-ups greater than 3" in height shall be reinforced as shown.



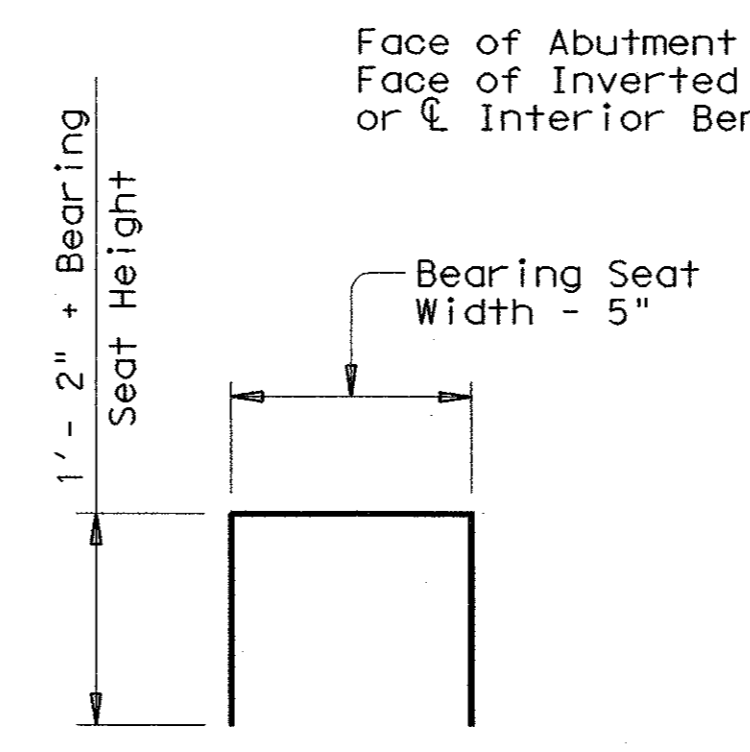
PLAN



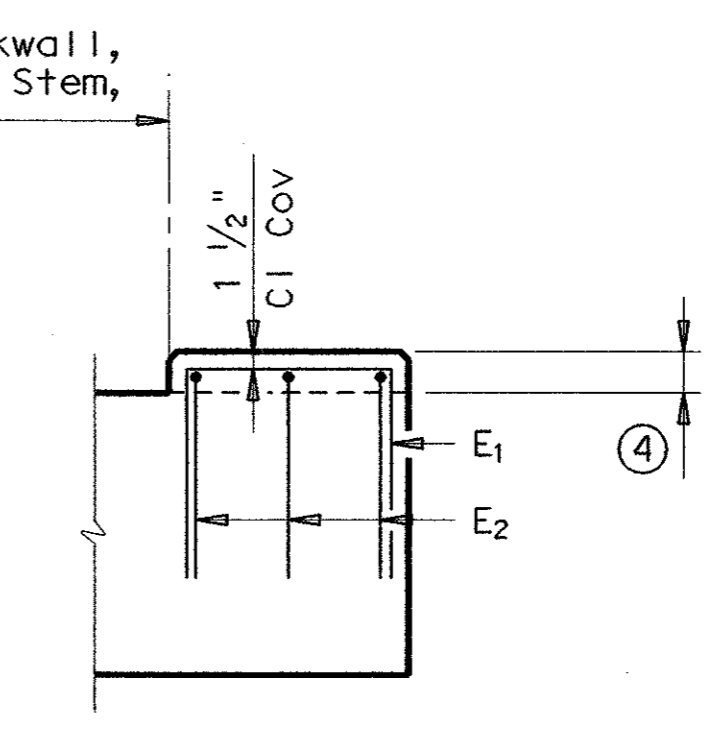
DETAIL A

For Exterior Beam Only

DETAIL B



BARS E1 (#5)

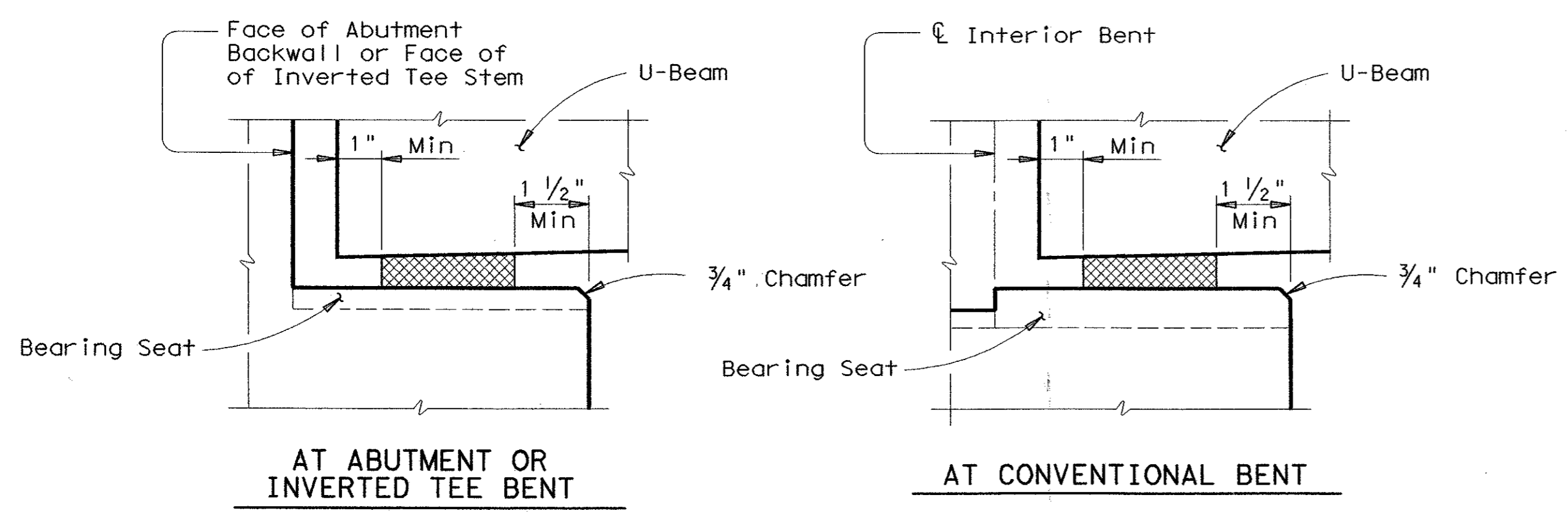


SECTION B-B

GENERAL NOTES:

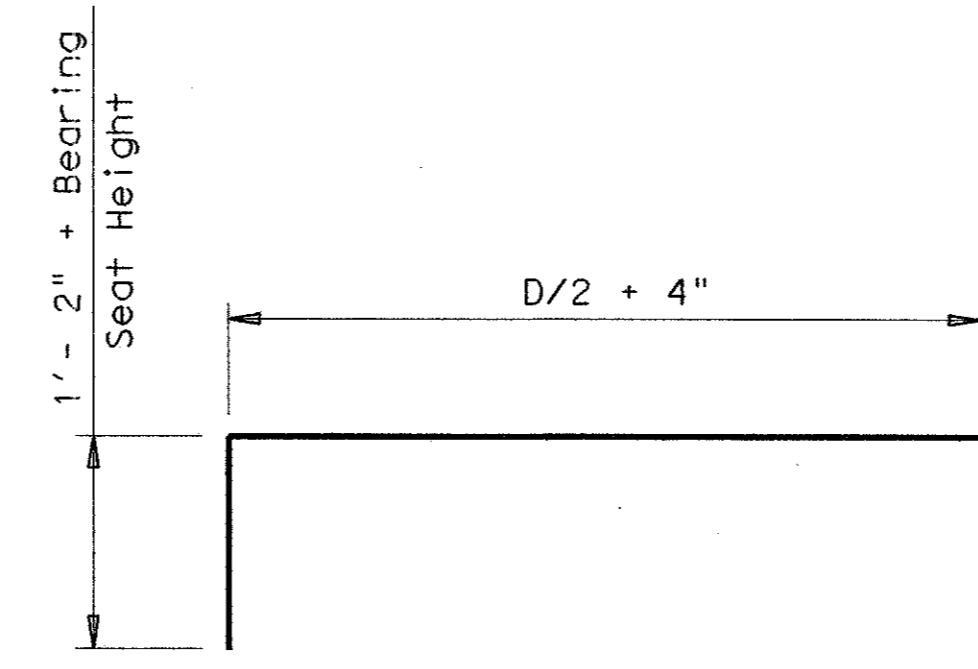
The back bearing of bent shall have one pad and the forward bearing of bent shall have two pads unless noted otherwise in the plans. Finish Bearing Surface with a wood float finish. Bearing Surface shall be clean and free of all loose material before placing Bearing Pads. For Transition Bents with backwall, the beams and elastomeric bearing pads shall receive the same treatment as shown for the Abutment. See Bearing Pad Taper Report sheet for Fabricator's Report of bearing pad taper. Cost of furnishing and installing elastomeric bearings shall be included in unit price bid for "Prestressed Concrete Beams".

Note: The use of Polyisoprene (natural rubber) for the manufacture of bearing pads will not be permitted.



SECTION A-A

Showing Standard Beam End.



BARS E2 (#5)

Texas Department of Transportation
Design Division (Bridge)

ENGLISH BEAM END AND BEARING DETAILS (FOR PRESTR CONC U-BEAMS)

UBB

FILE: ubst+d002.dgn	DN: TxDOT	CK: TGA	DW: TxDOT	CK: TGA	STD: B540
© TxDOT March 1998	DIST	FED REG	FEDERAL AID PROJECT	SHEET	BS-4
REVISIONS	6	COUNTY	CONTROL	SECT	JOB
					HIGHWAY