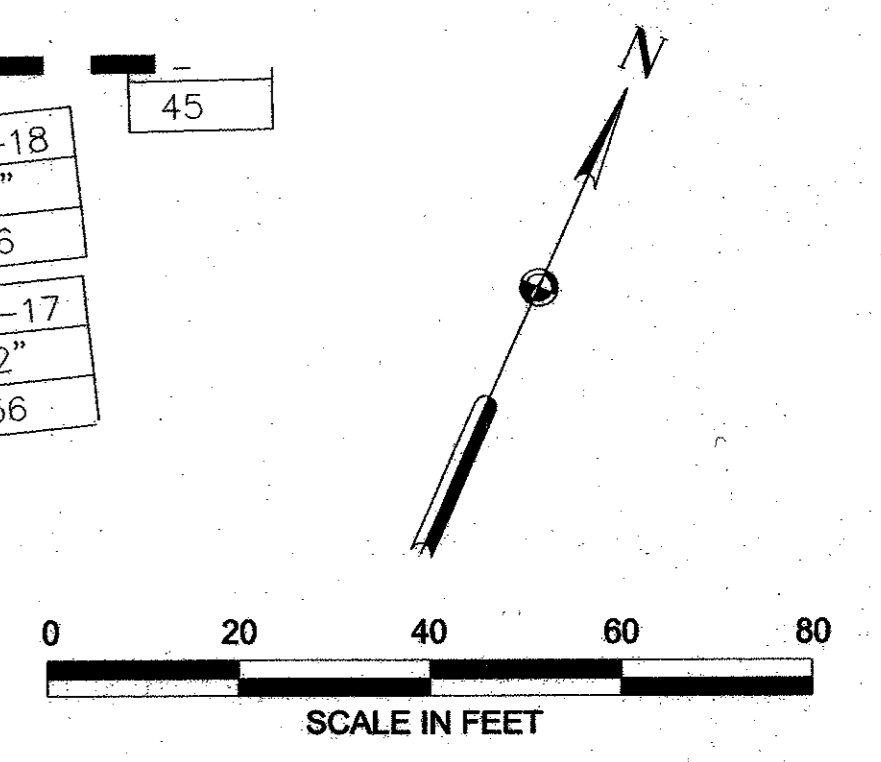
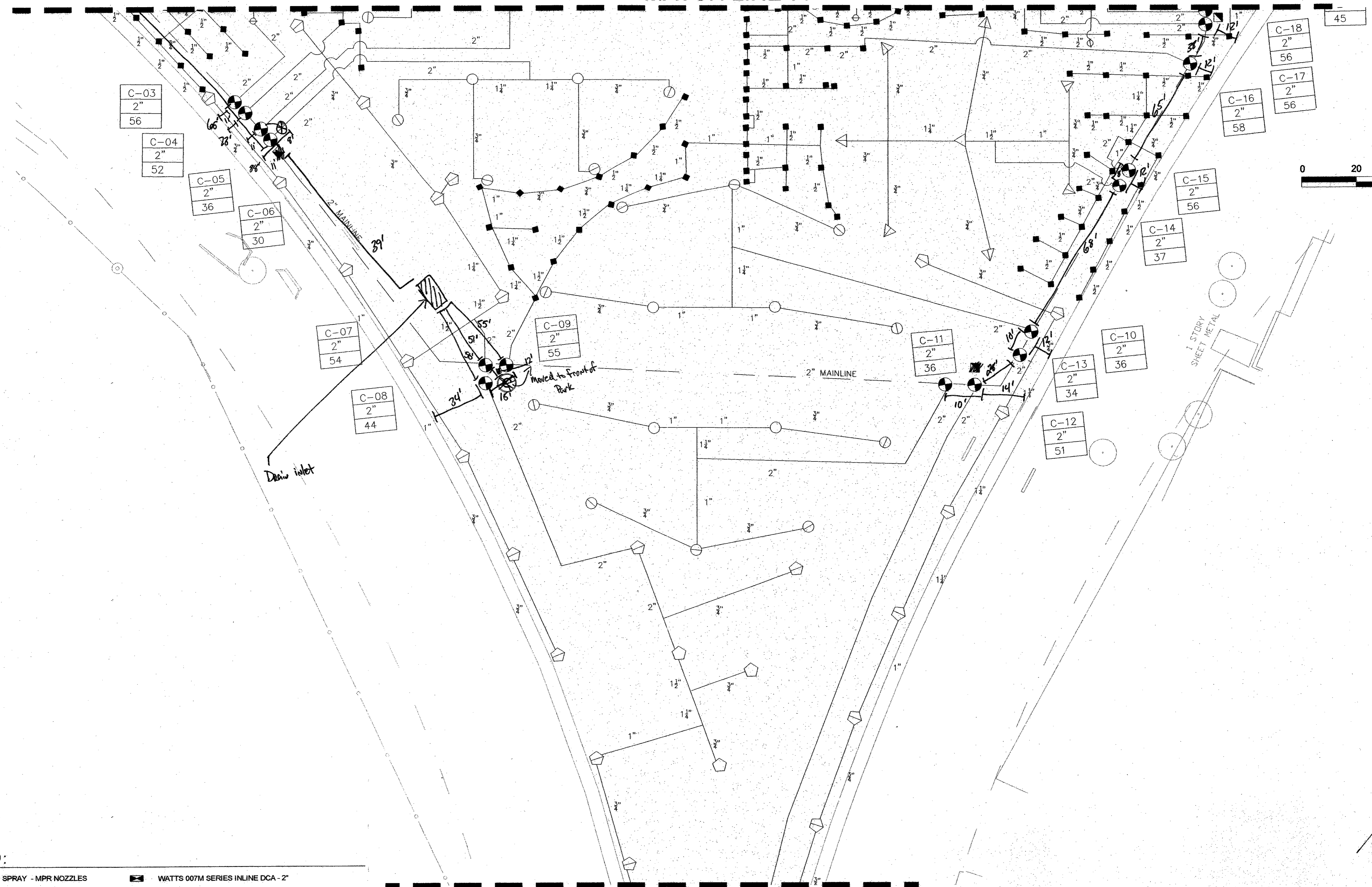


MATCH LINE 'A'

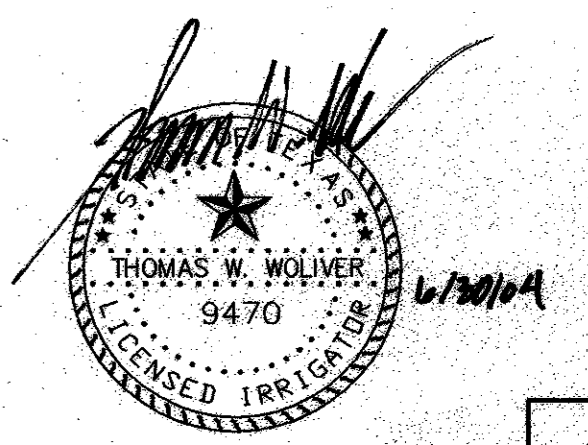


MATCH LINE 'B'

IRRIGATION LEGEND:

- RAINBIRD 1804-PRS-SAM SERIES 4" POP-UP SPRAY - MPR NOZZLES
- RAINBIRD 1806-PRS-SAM SERIES 6" POP-UP SPRAY - MPR NOZZLES
- ⊙ RAINBIRD 1812-PRS-SAM SERIES 12" POP-UP SPRAY - MPR NOZZLES
- ◇ TORO FB-PC-50 SERIES 12" POP-UP BUBBLERS - TURF AREAS
- ◇ TORO FB-100 ON SCH 80 RISER W/SHRUB ADAPTOR - TREE WELLS
- HUNTER I20-ADV SERIES - 8.0 NOZZLE
- ⊖ HUNTER I20-ADV SERIES - 4.0 NOZZLE
- ⊕ HUNTER I20-6P-ADV SERIES - 8.0 NOZZLE
- ⊖ HUNTER I20-6P-ADV SERIES - 4.0 NOZZLE
- △ HUNTER I20-HP-ADV SERIES - 8.0 NOZZLE
- △ HUNTER I20-HP-ADV SERIES - 4.0 NOZZLE
- ⊙ WEATHERMATIC 11000CR SERIES REMOTE CONTROL VALVE
- MANIFOLDED VALVES SHALL BE SPACED 4'-0" APART
- BUCKNER QB3SBL07 SINGLE LUG 3/4" QUICK COUPLING VALVE
- N SPEARS PLASTIC BALL VALVE - Same size as mainline
- WATTS 007M SERIES INLINE DCA - 2"
- M HERSEY MVR WATER METER - 2"
- Ⓐ RAINMASTER EVOLUTION DX-2 CONTROLLER- ELECTRICAL POWER DISTRIBUTION AND PHONE SERVICE LINES TO THE IRRIGATION CONTROLLERS SHALL BE THE RESPONSIBILITY OF THE IRRIGATION CONTRACTOR. THE ELECTRICAL AND PHONE LINES (AND ALL RELATED WORK) SHALL BE INSTALLED PER ALL LOCAL, STATE, AND NATIONAL CODES.
- ⊕ FLOW METER - SAME SIZE AS MAINLINE - FS-200 DATA INDUSTRIAL FLOW METER
- SCHEDULE 40 PVC MAINLINE - REF PLAN
- Class 315 IPS or Class 200 IPS Lateral Line
- ▨ SCH 40 PVC SLEEVE - PERMANENTLY MARK CURBS WITH LOCATIONS OF SLEEVES PER CITY STANDARDS
- ⊕ ZONE CONTROLLER - STATION NUMBER
- VALVE VALVE SIZE
- GPM GPM PER VALVE

CONTRACTOR SHALL VERIFY NOZZLE SIZES IN FIELD FOR MPR AND HEAD TO HEAD COVERAGE. CONTRACTOR TO MINIMIZE OVERSPRAY. NO OVERSPRAY ONTO PAVEMENT SHALL BE ACCEPTED.



NO.		DATE	REVISION	APPROV.
				236
HNTB ARCHITECTS ENGINEERS PLANNERS The HNTB Companies				
ARAPAHO ROAD EXTENSION				
SURVEYOR BOULEVARD TO ADDISON ROAD				
IRRIGATION PLAN				
MATCH LINE A TO				
MATCH LINE B				
TOWN OF ADDISON, TEXAS				
Design	TW	Drawn	TW	DATE
Check	TW	Check	MP	6/3/04
SCALE		PROJECT NO.		SHEET NO.
VARIES		25768		IR-13