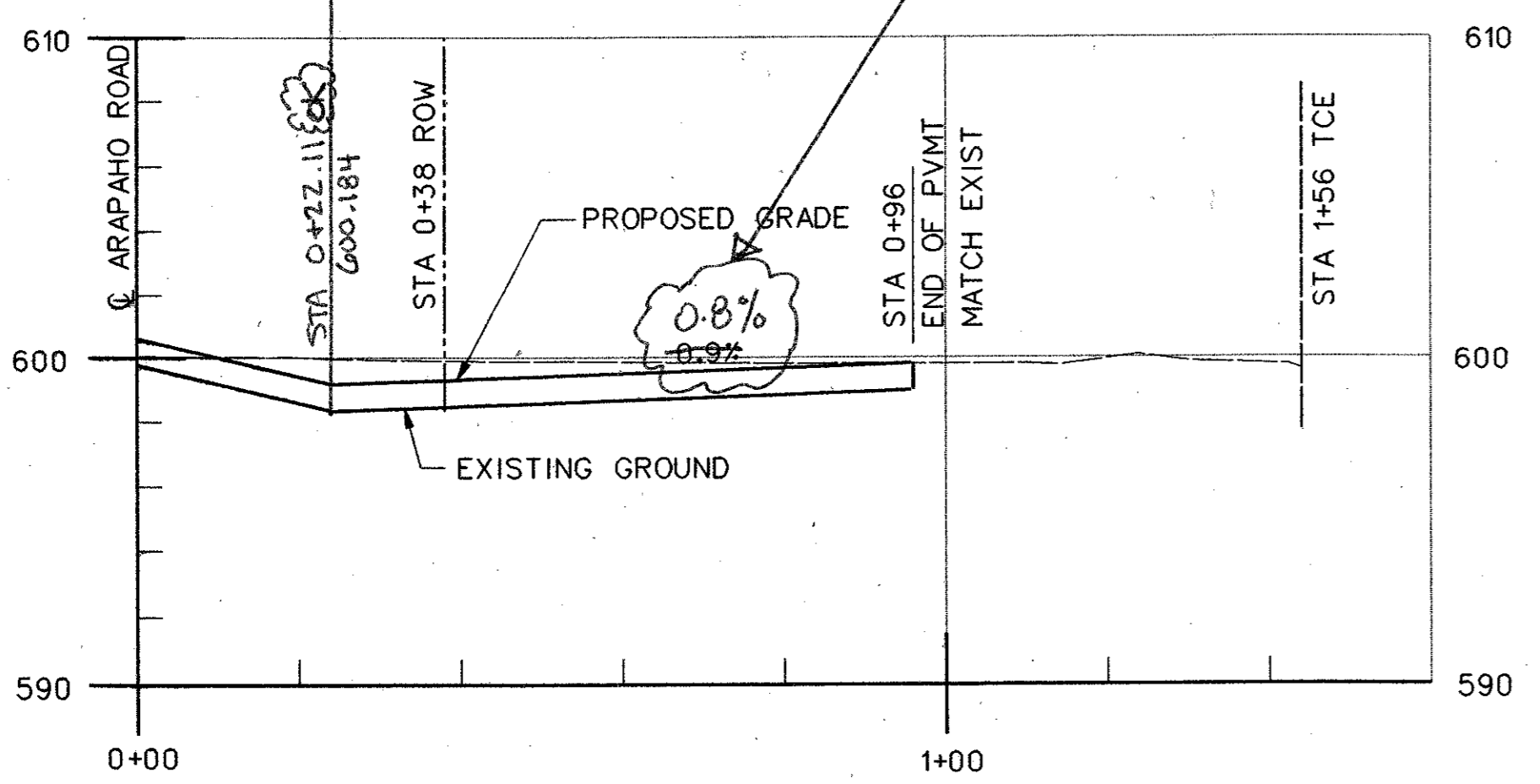
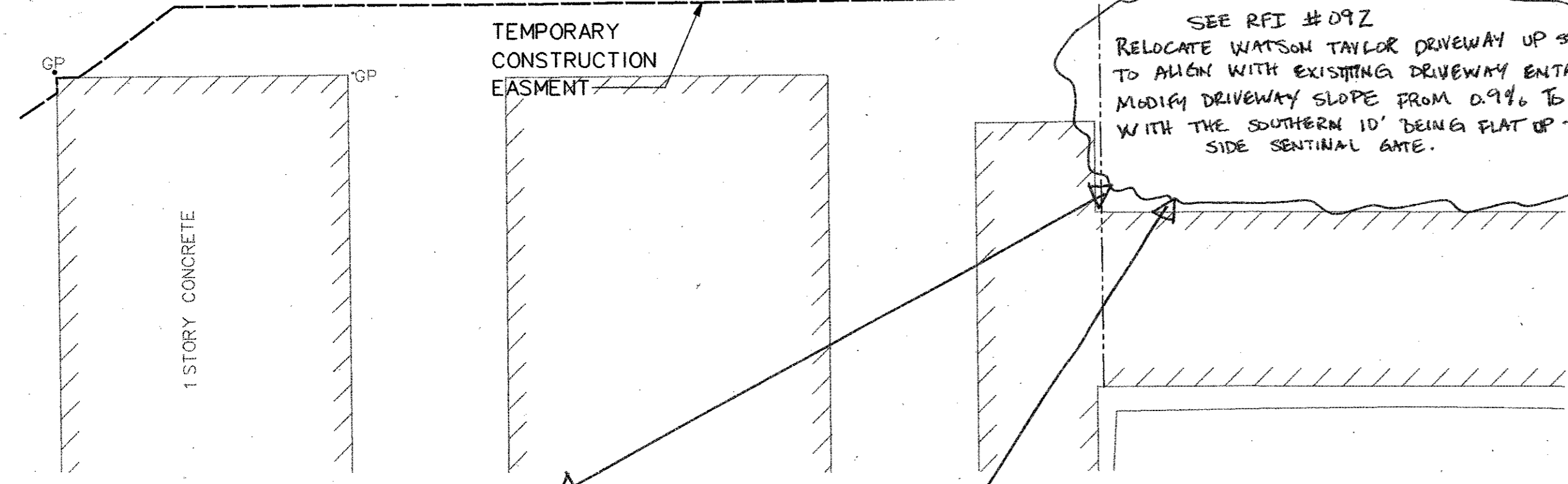
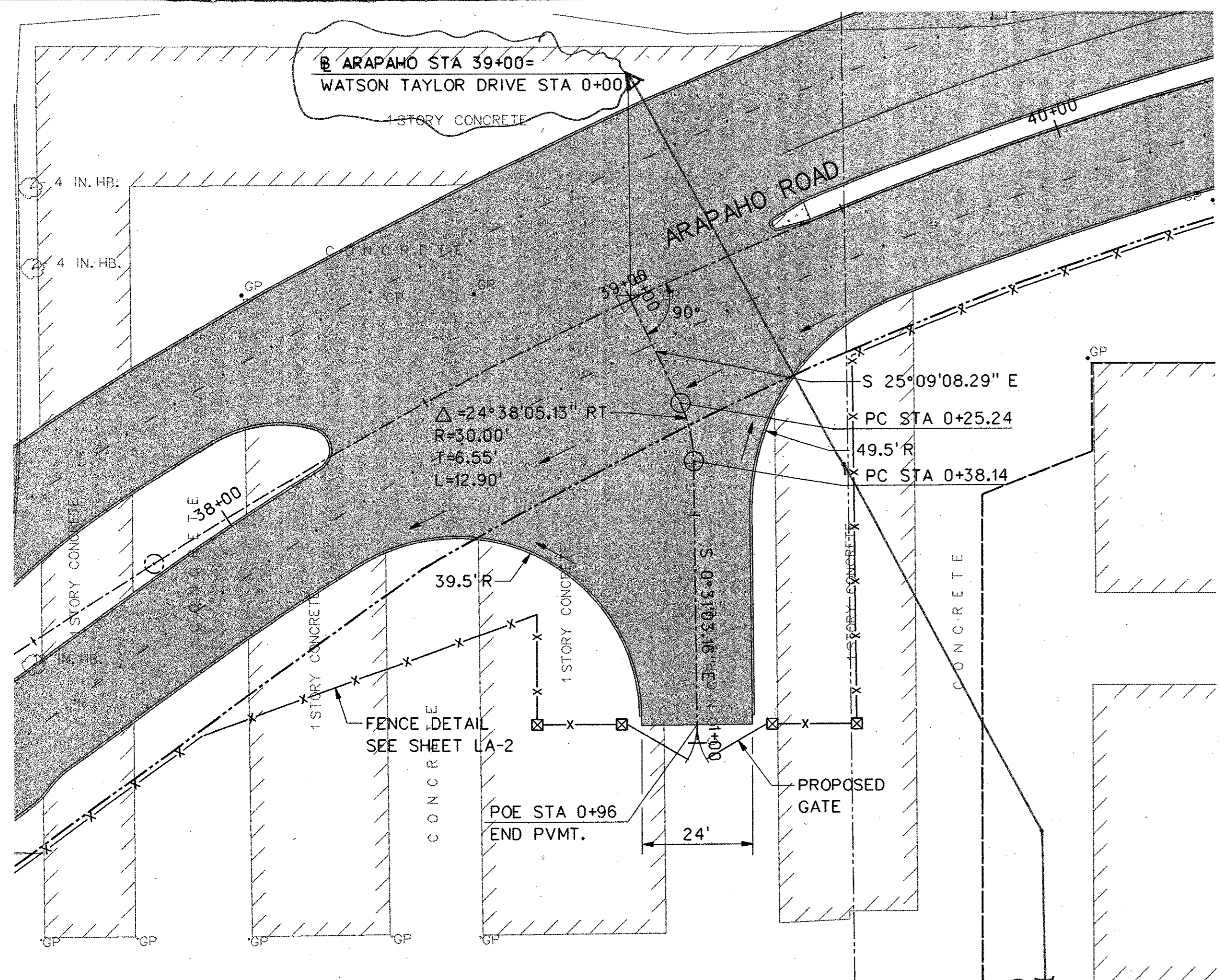
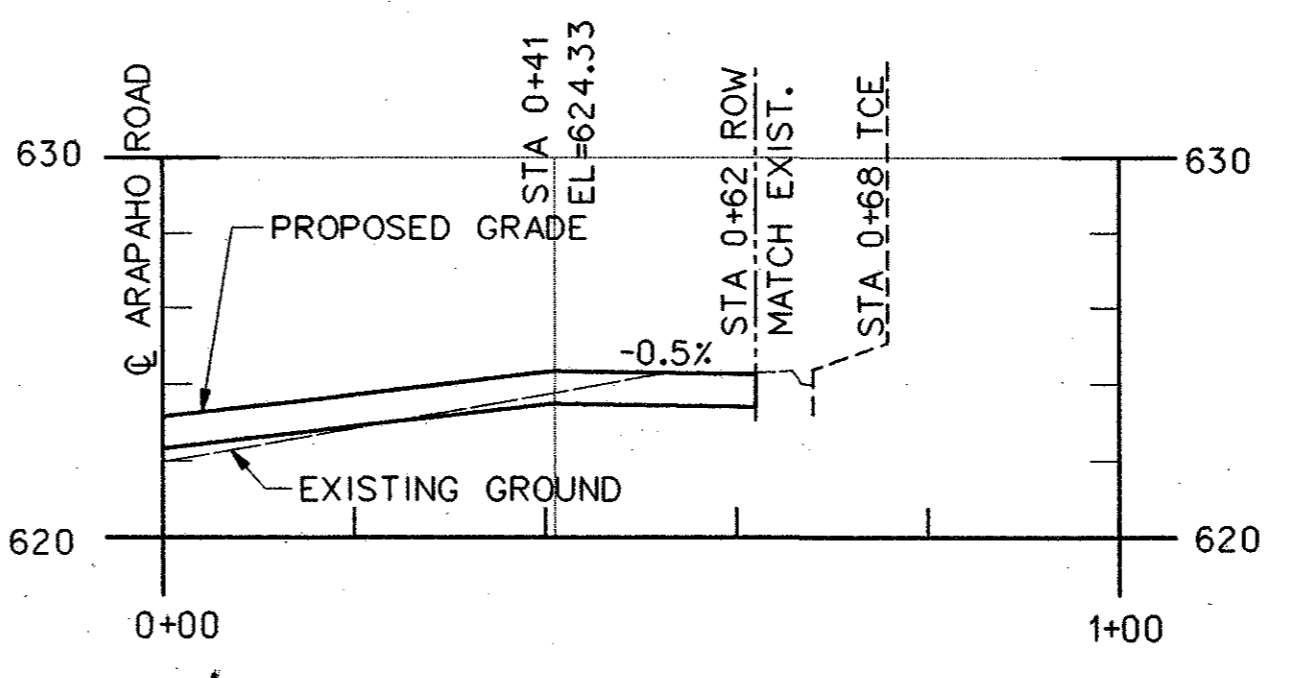
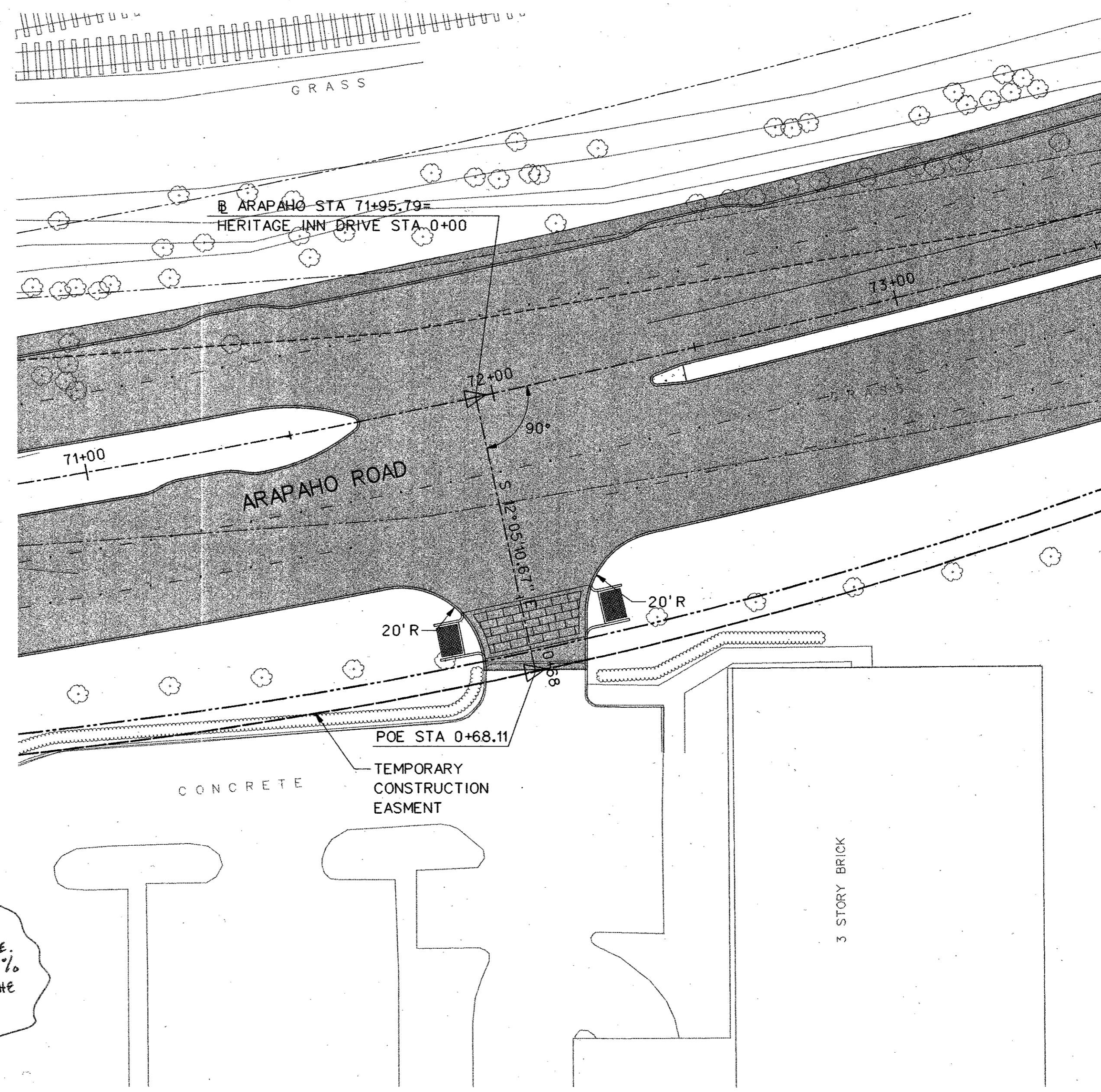


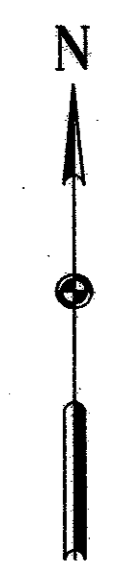
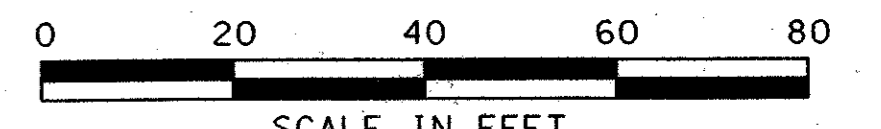
26-JUL-2004 16:03  
G:\25768-ph3\1\1\Cds\ar3dp01.dgn



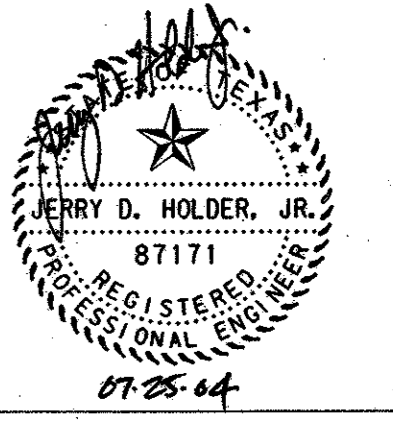
WATSON TAYLOR PARCEL  
DRIVEWAY AT STA 39+00



HERITAGE INN DRIVEWAY AT STA 71+96



- NOTES:
1. 10' ROUNDING AT DRIVEWAY GRADE BREAKS.
  2. REINFORCED PCC PAVEMENT TRANSITIONS FROM 8" AT EDGE OF ROADWAY TO 6" AT ROW.



NO.	DATE	REVISION	APPROV.
<b>HNTB</b> ARCHITECTS ENGINEERS PLANNERS <small>The HNTB Companies</small>			
<b>ARAPAHO ROAD - PHASE III</b> SURVEYOR BOULEVARD TO ADDISON ROAD DRIVEWAY PROFILES SHEET 1 OF 1			
TOWN OF ADDISON, TEXAS			
Design JSN	Drawn GFS	DATE	SCALE
Check JDH	Check JSN	APRIL 04	1" = 5'
PROJECT NO.	SHEET NO.		
25768	DP-1		

53