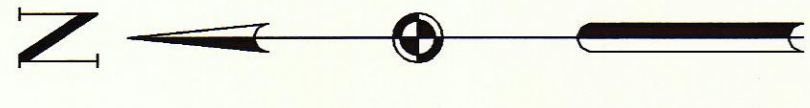

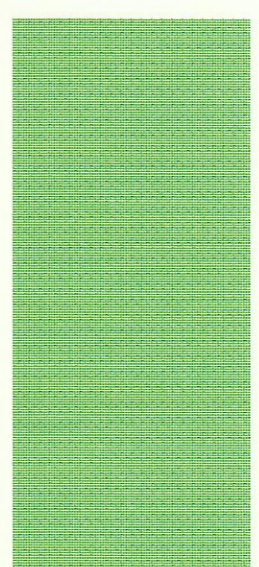
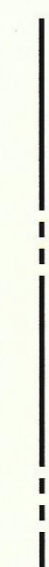



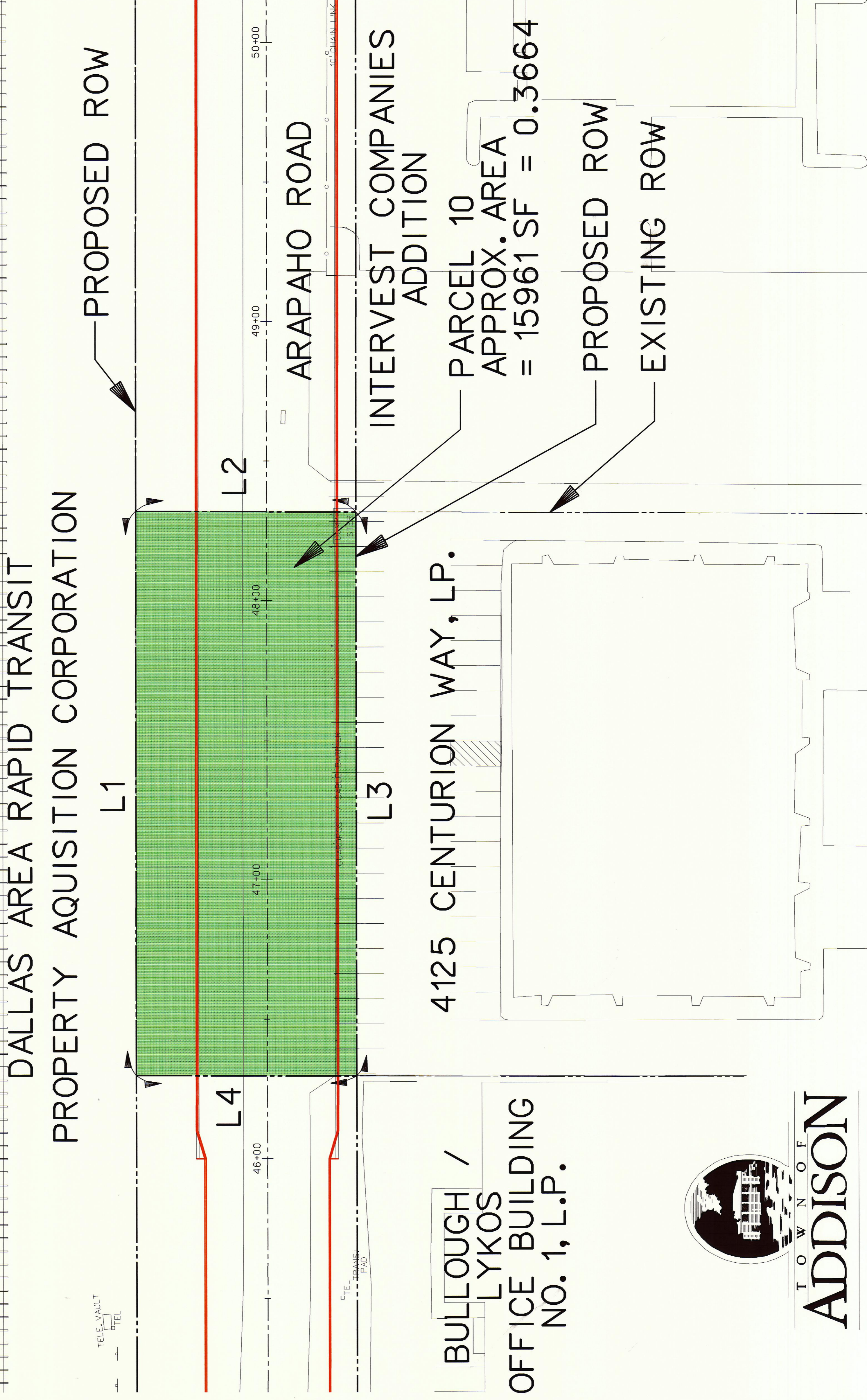
LINE TABLE			
LINE	BEARING	DIST	
L1	S 89°58'49"E	202.14'	
L2	S 00°08'05" W	78.95	
L3	N 89°58'49" W	202.14'	
L4	N 00°08'05" E	78.95'	

SCALE:
1 INCH=20 FEET



LEGEND

-  PROPOSED ARAPAHO ROAD
-  PROPOSED PARCEL
-  PROPOSED ROW
-  EXISTING ROW

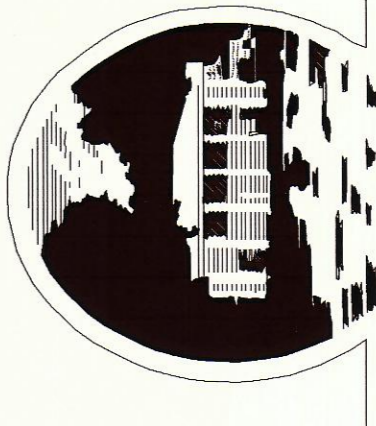


DALLAS AREA RAPID TRANSIT
PROPERTY ACQUISITION CORPORATION

BULLOUGH /
LYKOS
OFFICE BUILDING
NO. 1, L.P.

4125 CENTURION WAY, LP.

INTERVEST COMPANIES
ADDITION
PARCEL 10
APPROX. AREA
= 15961 SF = 0.3664 ACRES



TOWN OF
ADDISON



ARCHITECTS ENGINEERS PLANNERS
The HNTB Companies

PARCEL 10
R.O.W. EXHIBIT
OCTOBER 2002