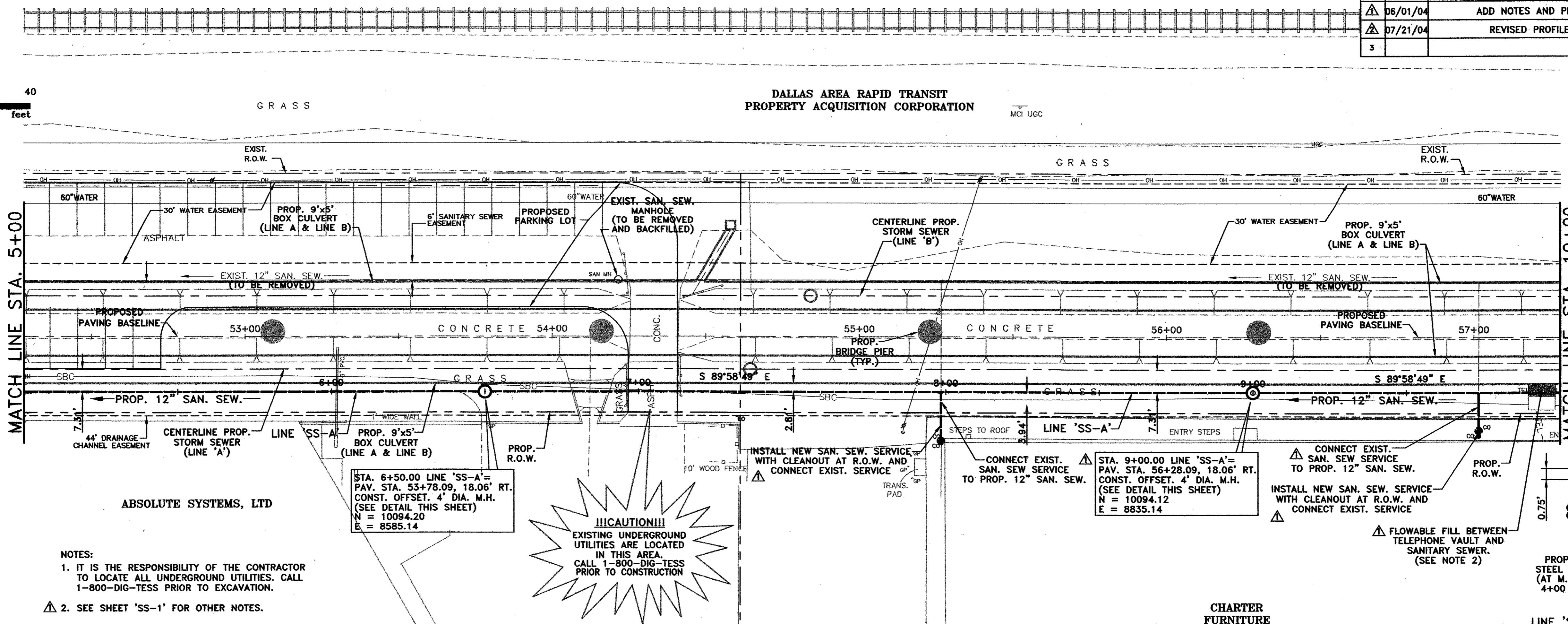
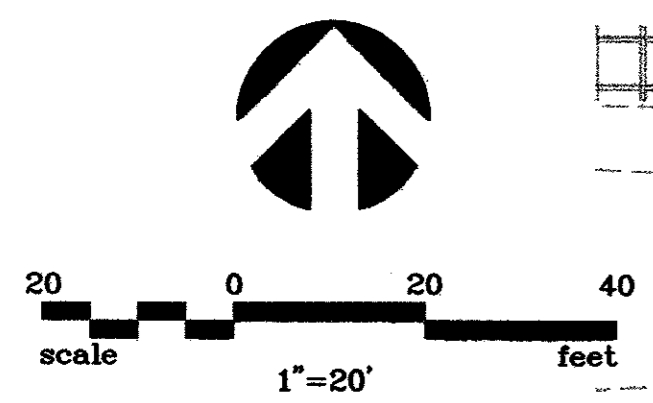


NO.	DATE	REVISION	APPROV.
1	06/01/04	ADD NOTES AND PROPOSED GRADE	A.K.C.
2	07/21/04	REVISED PROFILE PER G & A	A.K.C.
3			



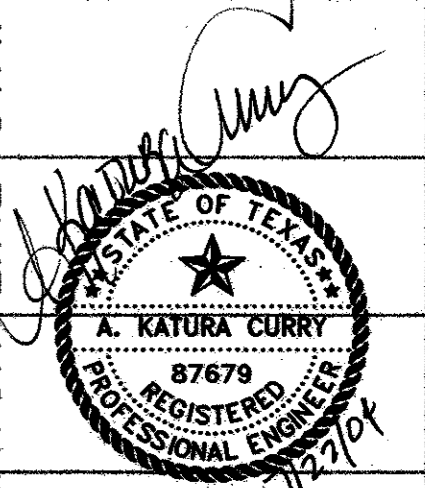
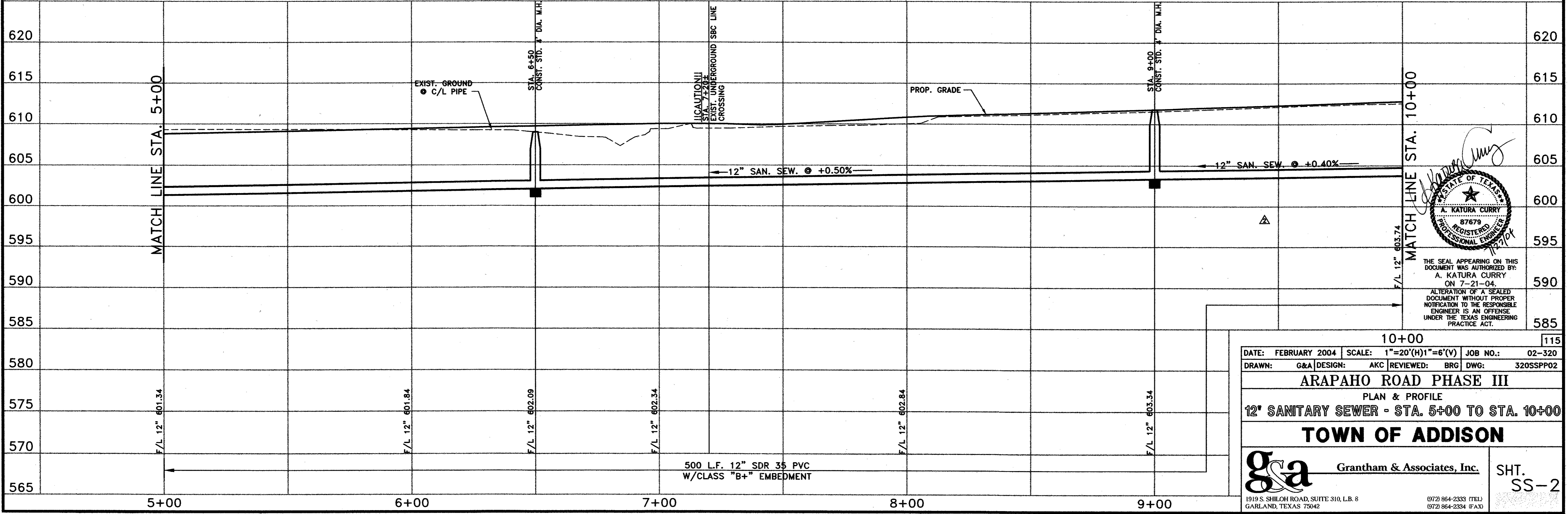
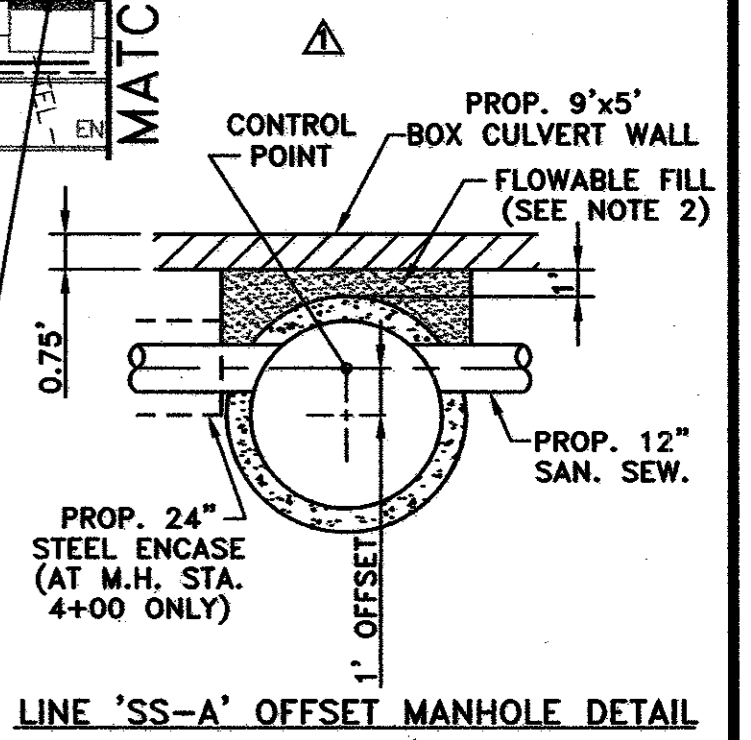
NOTES:
 1. IT IS THE RESPONSIBILITY OF THE CONTRACTOR TO LOCATE ALL UNDERGROUND UTILITIES. CALL 1-800-DIG-TESS PRIOR TO EXCAVATION.
 2. SEE SHEET 'SS-1' FOR OTHER NOTES.

STA. 6+50.00 LINE 'SS-A'=
 PAV. STA. 53+78.09, 18.06' RT.
 CONST. OFFSET. 4' DIA. M.H.
 N = 10094.20
 E = 8585.14

!!!CAUTION!!!
 EXISTING UNDERGROUND UTILITIES ARE LOCATED IN THIS AREA. CALL 1-800-DIG-TESS PRIOR TO CONSTRUCTION

CONNECT EXIST. SAN. SEW SERVICE TO PROP. 12" SAN. SEW.
 STA. 9+00.00 LINE 'SS-A'=
 PAV. STA. 56+28.09, 18.06' RT.
 CONST. OFFSET. 4' DIA. M.H.
 (SEE DETAIL THIS SHEET)
 N = 10094.12
 E = 8835.14

CONNECT EXIST. SAN. SEW SERVICE TO PROP. 12" SAN. SEW.
 INSTALL NEW SAN. SEW. SERVICE WITH CLEANOUT AT R.O.W. AND CONNECT EXIST. SERVICE



THE SEAL APPEARING ON THIS DOCUMENT WAS AUTHORIZED BY:
 A. KATURA CURRY
 ON 7-21-04.
 ALTERATION OF A SEALED DOCUMENT WITHOUT PROPER NOTIFICATION TO THE RESPONSIBLE ENGINEER IS AN OFFENSE UNDER THE TEXAS ENGINEERING PRACTICE ACT.

10+00 115

DATE: FEBRUARY 2004 SCALE: 1"=20'(H)1"=6'(V) JOB NO.: 02-320
 DRAWN: G&A DESIGN: AKC REVIEWED: BRG DWG: 320SSPP02

ARAPAHO ROAD PHASE III
 PLAN & PROFILE
 12" SANITARY SEWER - STA. 5+00 TO STA. 10+00

TOWN OF ADDISON

g&a Grantham & Associates, Inc. SHT. SS-2
 1919 S. SHILOH ROAD, SUITE 310, L.B. 8 GARLAND, TEXAS 75042 (972) 864-2333 (TEL) (972) 864-2334 (FAX)