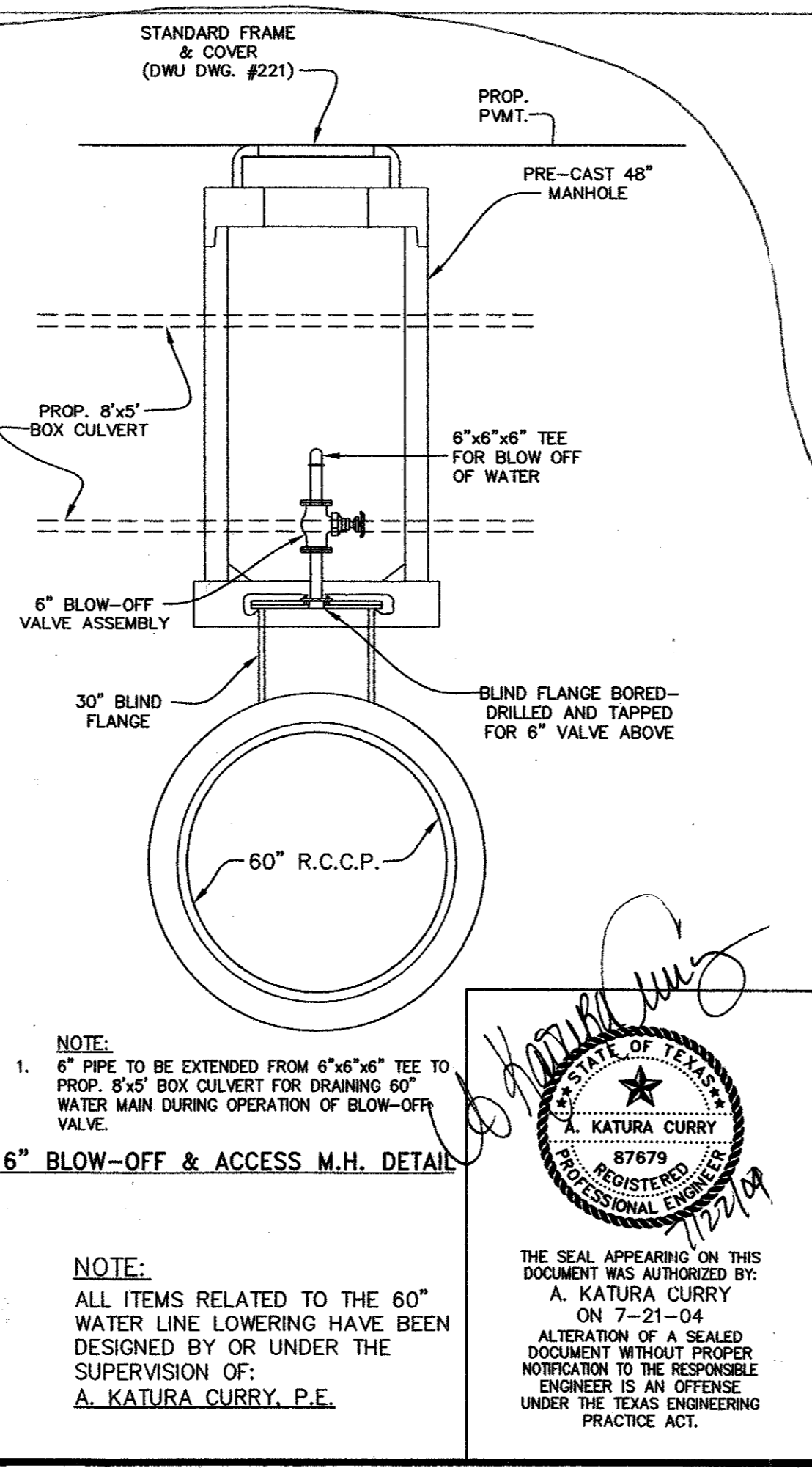


60" WATER REMOVE:
 1 - 48" Valve and Manhole
 2 - 60" x 48" Eccentric Reducers
INSTALL:
 1 - 60" Horizontal Butterfly Valve, M.J. x M.J.
 1 - 60" Butt Strap Closure Section
 2 - 60" RC E - 301 x Plain End Adapters w/
 6" Flanged Outlets
 1 - 4" Dia. Blow-off M.H. per Detail
 1 - 6" Dia. Precast M.H. Over Gears As Per D.W.U.
 1 - 6" Gate Valve for Bypass

60" TO REMAIN IN SERVICE UNPHASED CONSTRUCTION & TESTING OF TEST SECTION COMPLETED

GENERAL NOTES
 1. EXCEPT AT TIE-IN LOCATIONS, NEW ALIGNMENT SHALL BE IN SEPARATE TRENCH FROM EXISTING 60" WATER.
 2. ALL 60" WATER LINE CONSTRUCTION SHALL BE PER DALLAS WATER UTILITIES (DWU) STANDARDS.
 3. THE EXISTING 60" WATER MAIN CAN ONLY BE SHUTDOWN DURING THE MONTHS OF OCTOBER TO APRIL.
 4. ALL BENDS AND APPURTENANCES ALONG THE "TEST SECTION" CAN USE WELDED THRUST RESTRAINTS. FINAL CLOSURE CONNECTIONS MUST BE RESTRAINED USING THRUST BLOCKING PER DWU STANDARDS.
 5. INTERNAL TEST PLUGS OR EXTERNAL TEST PLUGS WITH A 2" FLANGE FITTING MAY BE USED FOR TESTING OF THE "TEST SECTION".
 6. DEPTH OF COVER OVER NEW PIPE SHALL NOT EXCEED 18 FEET NOR BE LESS THAN 6 FEET.
 7. PIPE MUST END AT EXISTING PIPE JOINTS. JOINTS TO BE LOCATED IN THE FIELD OR FROM EXISTING SHOP DRAWINGS.
 8. OVERALL LENGTH OF RELOCATION AND LOCATION OF TIE-IN POINTS MAY BE ALTERED BASED ON LOCATION OF EXISTING JOINTS.
 9. DETAILED SHOP DRAWINGS MUST BE PRODUCED FOR THE LOWERING SHOWING LOCATIONS OF ALL THRUST BLOCKING, VALVES, AND APPURTENANCES. THE SHOP DRAWINGS MUST INCLUDE THE CONTRACTOR'S METHODS FOR TESTING AND CONSTRUCTION AS WELL AS DEWATERING OF THE EXISTING LINE. ALL SHOP DRAWINGS MUST BE APPROVED BY BOTH DWU AND THE ENGINEER PRIOR TO FABRICATING THE LOWERING.
 10. CONTRACTOR SHALL COORDINATE THE CONSTRUCTION WITH DWU. DWU WILL PERFORM ALL VALVE SHUT-OFFS. 48 HOURS NOTICE IS REQUIRED FOR VALVE SHUT-OFFS.
 11. FOR CONSTRUCTION, THE DWU CONTACT PERSON IS RANDY PAYTON AT (214) 670 - 8035.
 12. DWU CONSTRUCTION INSPECTOR MUST BE PRESENT AT ALL TIMES DURING CONSTRUCTION OF THE 60" WATERLINE AND BUTTERFLY VALVE CONSTRUCTION.
 13. THE AIR RELEASE VALVE SHALL BE VENTED ONTO DWU'S PROPERTY BEHIND THE FENCE.



GENERAL NOTES

- The contractor shall verify the dimensions of all existing water mains to be connected to prior to ordering materials for connections.
- Backfill for all new valves and manholes shall be Four F Flowable Backfill as per NCTCOG 602.10 (I). NO SEPARATE PAY ITEM
- The 60" Butterfly Valve will be furnished by the City of Dallas Water Utilities Department. The Valve shall be picked up by the contractor at 2900 Municipal St. Dallas, Texas 75215. The contractor shall contact Johnny Partain (214) 670-8796 or Robert Dullig at (214) 670-8458, 48 hours in advance to schedule a pick-up time.
- The contractor will be responsible for furnishing the bolts, glands, insulating kits, gaskets etc. for all valves.
- The Water Main shall only be shutdown during the winter months of October to April and with the permission of Water Distribution.
- All existing utilities shown are approximate locations and depths. Exact locations and depths shall be verified by the contractor before beginning construction (including ordering of pre-cast manholes and ordering of concrete pipe, if applicable). The contractor is responsible for the protection of all existing utilities.
- CAUTION: Existing underground utilities involved. Call the Texas Excavation Safety System at 1-800-DIG-TESS (1-800-344-8377) 48 hours prior to construction.

4" PVC DRAIN PIPE TO BE INSTALLED AT THE OPTION OF CONSTRUCTION ENGINEER

TYPICAL BUTTERFLY VALVE INSTALLATION WITH BLOW - OFF & M.H.
 (No Scale)

REIN. CONC. SUPPORT DETAIL

12" DIA. 3000 P.S.I. CONCRETE
 #3 RINGS @ 12" VERTICALLY
 4-#3 VERTICAL DOWELS

NOTE:
 CONTRACTOR TO FURNISH STEM SUPPORT BRACKETS EVERY 8'-0" SUPPORT FROM WALL OF MANHOLE

NOTE:
 CONTRACTOR TO PROVIDE VALVE OPERATOR EXTENSION AS NECESSARY

Source: Drawing #59-129-V, sh 12, 13
 Hanson Pipe & Products, Inc.
 1003 N. McArthur Blvd.
 Grand Prairie, Texas 75050
 972-262-3600
 (Formerly Gifford-Hill-America, Inc.)

CONTRACT #03-167F, DWU FILE 685W, DWU NO. 540

NO.	DATE	REVISION	APPROV.
1			
2			
3			

DATE: JULY 2004 **SCALE:** 1"=20'(H)1"=6'(V) **JOB NO.:** 320-02
DRAWN: G&A **DESIGN:** AKC **REVIEWED:** BRG **DWG:** DWULOWERING

ARAPAHO ROAD PHASE III
 PLAN & PROFILE
D.W.U. 60" WATER & BUTTERFLY VALVE
TOWN OF ADDISON

g&a Grantham & Associates, Inc. **SHT. DWU-1**

1919 S. SHILOH ROAD, SUITE 310, L.B. 8 GARLAND, TEXAS 75042 (972) 964-2333 (TEL) (972) 964-2334 (FAX)