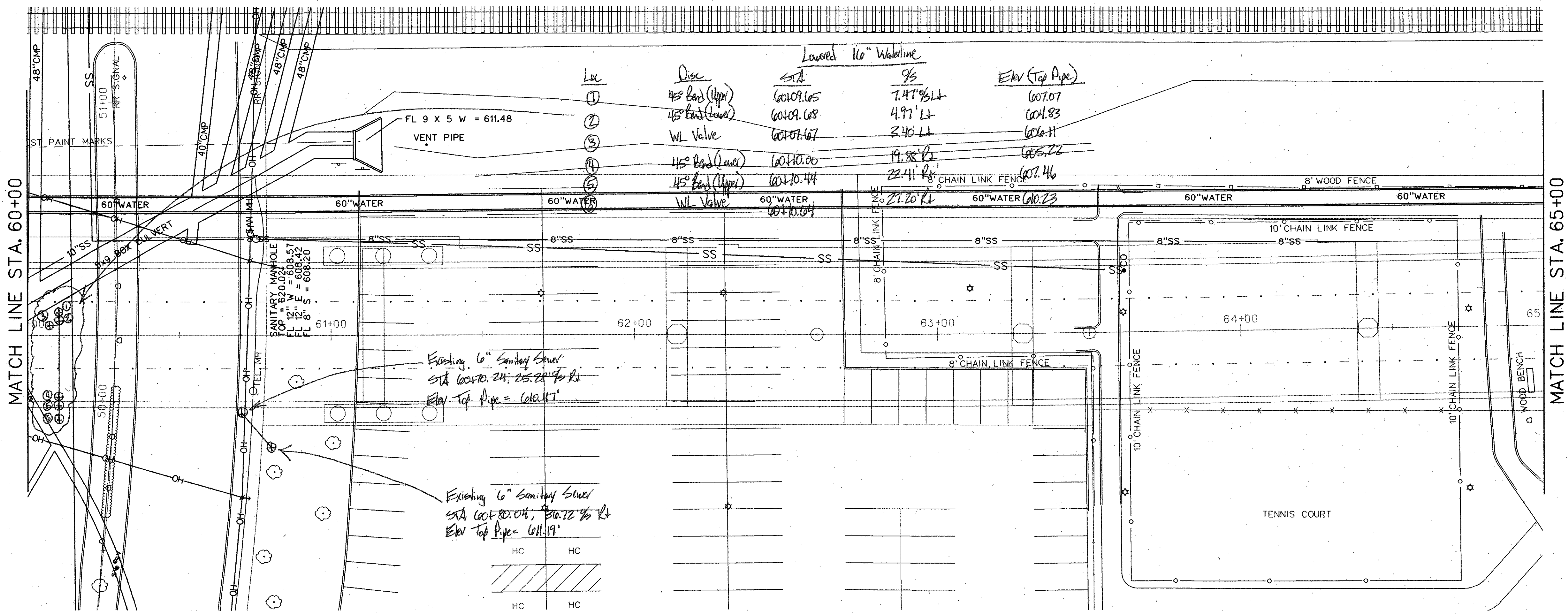


**LEGEND**

- OH — OVERHEAD LINES
- CO SANITARY SEWER CLEANOUT
- ⊙ FH FIRE HYDRANT
- ⊕ WV WATER VALVE
- ⊗ WM WATER METER
- ⊙ GM GAS METER

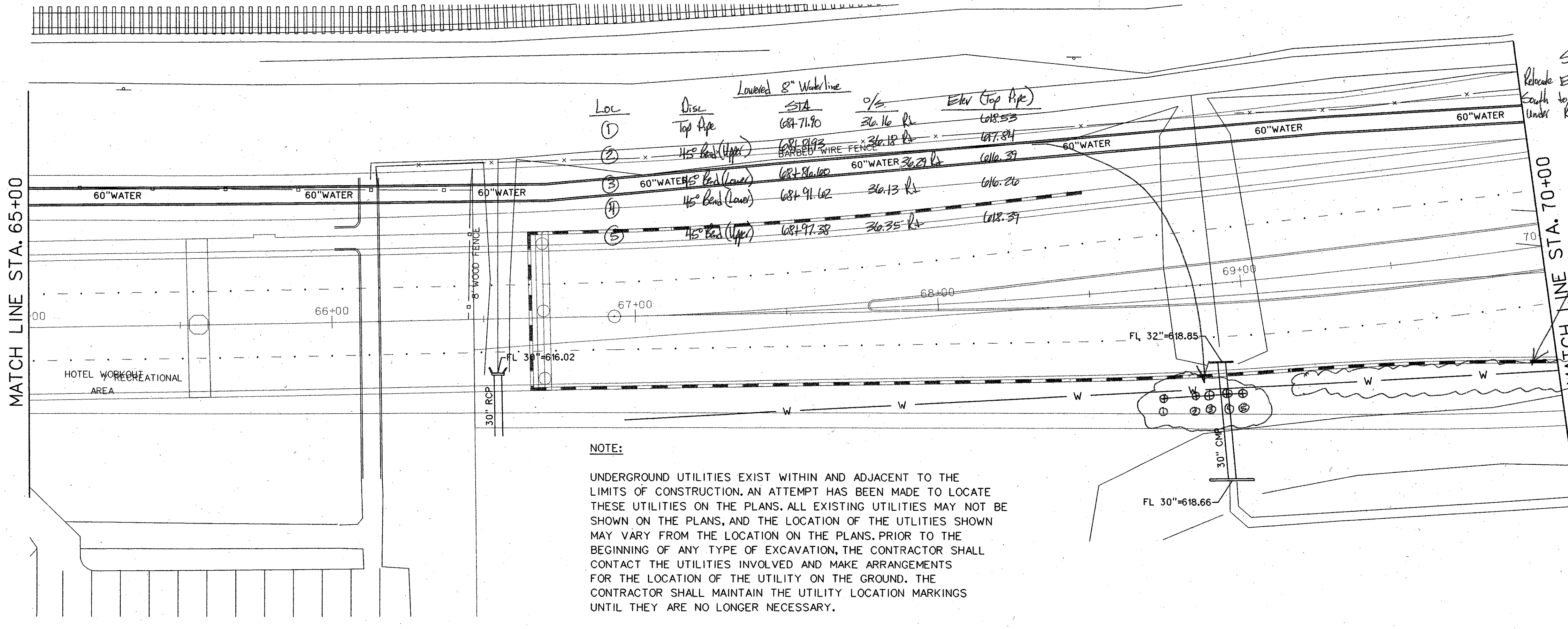
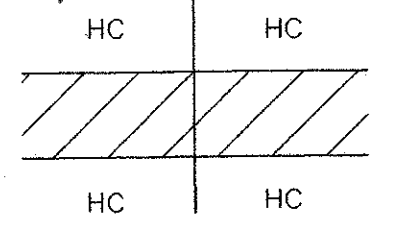


Lowered 16" Waterline

Loc	Disc	STA	Q/S	Elev (Top Pipe)
①	45° Bend (Upper)	60+09.65	7.47' RL	607.07
②	45° Bend (Lower)	60+09.68	4.97' LT	604.83
③	WL Valve	60+07.67	3.40' LT	606.11
④	45° Bend (Lower)	60+10.00	19.88' RL	605.22
⑤	45° Bend (Upper)	60+10.44	22.41' RL	607.46
⑥	WL Valve	60+10.04	21.20' RL	607.23

Existing 6" Sanitary Sewer  
 STA 60+10.24, 25.28, 28.96 RL  
 Elev Top Pipe = 602.47'

Existing 6" Sanitary Sewer  
 STA 60+80.04, 86.72, 96 RL  
 Elev Top Pipe = 601.19'

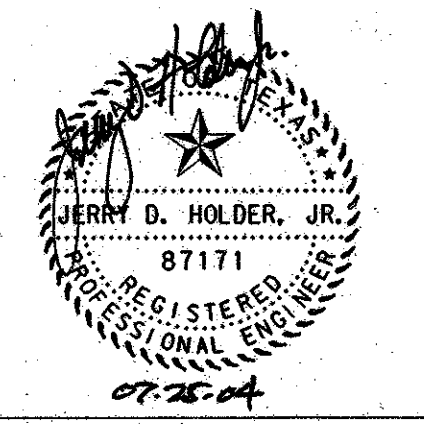


Lowered 8" Waterline

Loc	Disc	STA	Q/S	Elev (Top Pipe)
①	Top Pipe	68+71.90	36.16 RL	618.53
②	45° Bend (Upper)	68+81.92	36.18 RL	617.84
③	60" WATER 45° Bend (Lower)	68+86.60	60" WATER 36.29 RL	616.37
④	45° Bend (Lower)	68+91.62	36.13 RL	616.20
⑤	45° Bend (Upper)	68+97.38	36.35 RL	618.37

See RFI#083  
 Relocate Existing 8" Waterline to the South to keep it from being located Under Retaining Wall R/W.

**NOTE:**  
 UNDERGROUND UTILITIES EXIST WITHIN AND ADJACENT TO THE LIMITS OF CONSTRUCTION. AN ATTEMPT HAS BEEN MADE TO LOCATE THESE UTILITIES ON THE PLANS. ALL EXISTING UTILITIES MAY NOT BE SHOWN ON THE PLANS, AND THE LOCATION OF THE UTILITIES SHOWN MAY VARY FROM THE LOCATION ON THE PLANS. PRIOR TO THE BEGINNING OF ANY TYPE OF EXCAVATION, THE CONTRACTOR SHALL CONTACT THE UTILITIES INVOLVED AND MAKE ARRANGEMENTS FOR THE LOCATION OF THE UTILITY ON THE GROUND. THE CONTRACTOR SHALL MAINTAIN THE UTILITY LOCATION MARKINGS UNTIL THEY ARE NO LONGER NECESSARY.



NO.	DATE	REVISION	APPROV.
<b>HNTB</b> ARCHITECTS ENGINEERS PLANNERS The HNTB Companies			185
<b>ARAPAHO ROAD - PHASE III</b> SURVEYOR BOULEVARD TO ADDISON ROAD EXISTING UTILITY PLAN STA 60+00 TO 70+00 TOWN OF ADDISON, TEXAS			
Design JSN	Drawn GFS	DATE	SCALE PROJECT NO. SHEET NO.
Check JDH	Check JSN	APRIL 04	1" = 20' 25768 U-4

29-JUN-2004 13:03  
 G:\25768-ph3\h1\cdas\_r3ut04.dgn