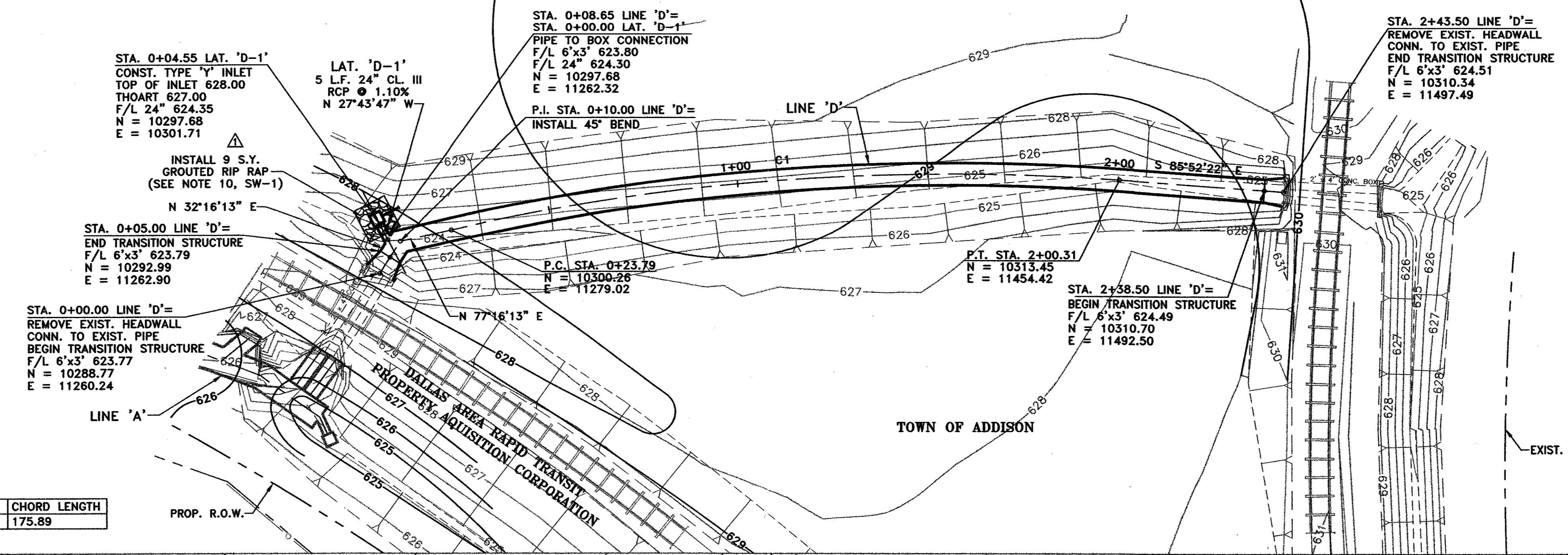
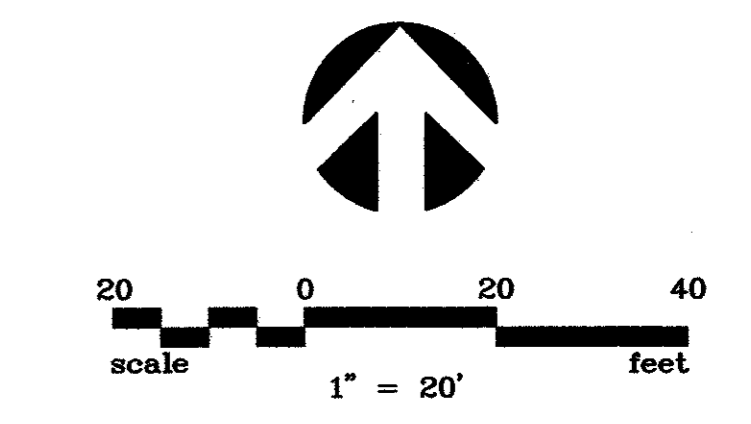
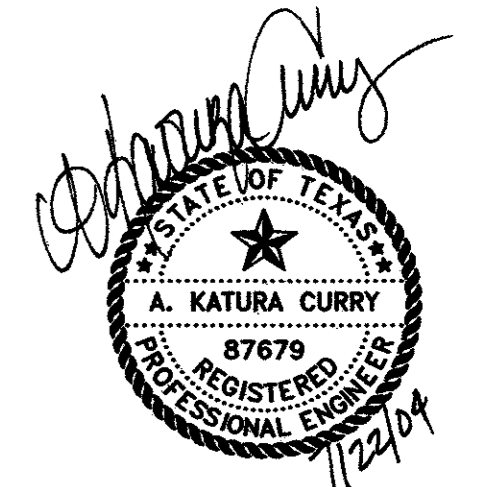


NO.	DATE	REVISION	APPROV.
1	06/28/04	REVISED PER ADDENDA	A.K.C.
2			
3			



NOTE:
REINFORCEMENT BAR SIZE AND SPACING IN TRANSITION SHALL MATCH REINFORCEMENT IN 6'x3' BOX CULVERT. BAR LENGTHS WILL VARY WITH TRANSITION DIMENSIONS.



THE SEAL APPEARING ON THIS DOCUMENT WAS AUTHORIZED BY:
A. KATURA CURRY
ON 7-21-04.
ALTERATION OF A SEALED DOCUMENT WITHOUT PROPER NOTIFICATION TO THE RESPONSIBLE ENGINEER IS AN OFFENSE UNDER THE TEXAS ENGINEERING PRACTICE ACT.

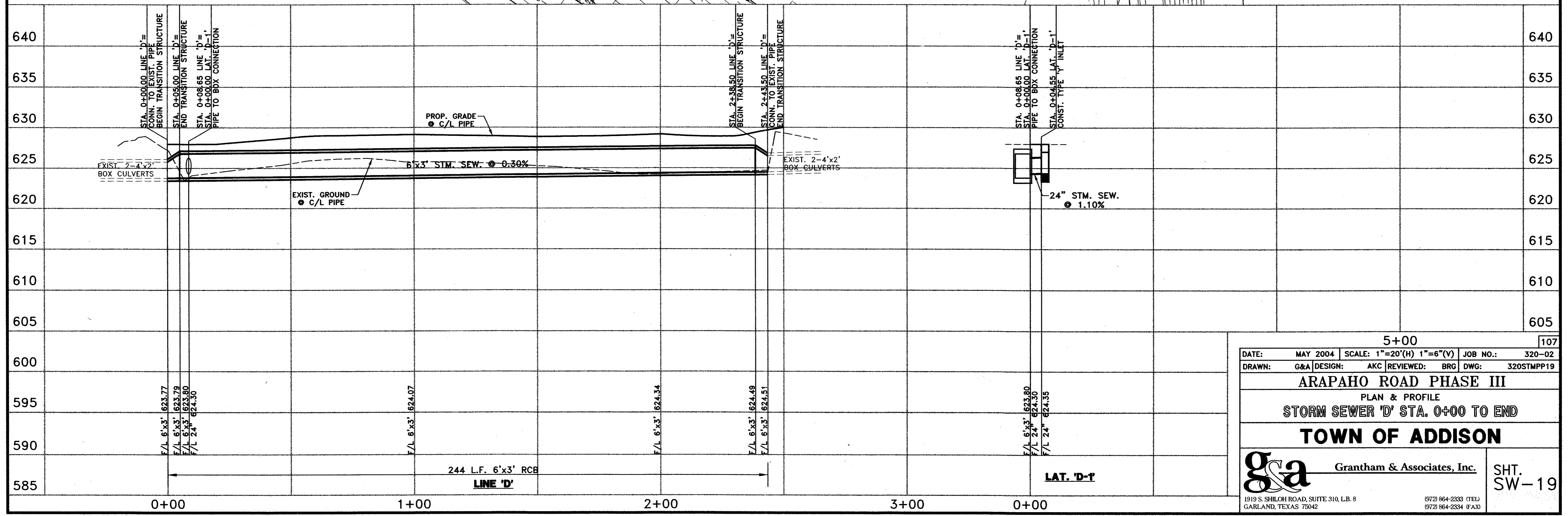
NOTE
REFER TO SW-1 FOR STORM SEWER NOTES

CITY OF DALLAS

TOWN OF ADDISON

LINE 'D' CURVE DATA

NUMBER	RADIUS	DELTA	ARC LENGTH	CHORD BEARING	CHORD LENGTH
C1	600.00	16°51'25"	176.53	N 85°41'56" E	175.89



5+00 107

DATE: MAY 2004 SCALE: 1"=20'(H) 1"=6"(V) JOB NO.: 320-02
 DRAWN: G&A DESIGN: AKC REVIEWED: BRG DWG: 320STMP19

ARAPAHO ROAD PHASE III
 PLAN & PROFILE
 STORM SEWER 'D' STA. 0+00 TO END

TOWN OF ADDISON

g&a Grantham & Associates, Inc. SHT. SW-19

1919 S. SHILOH ROAD, SUITE 310, L.B. 8 GARLAND, TEXAS 75042 (972) 864-2333 (TEL) (972) 864-2334 (FAX)