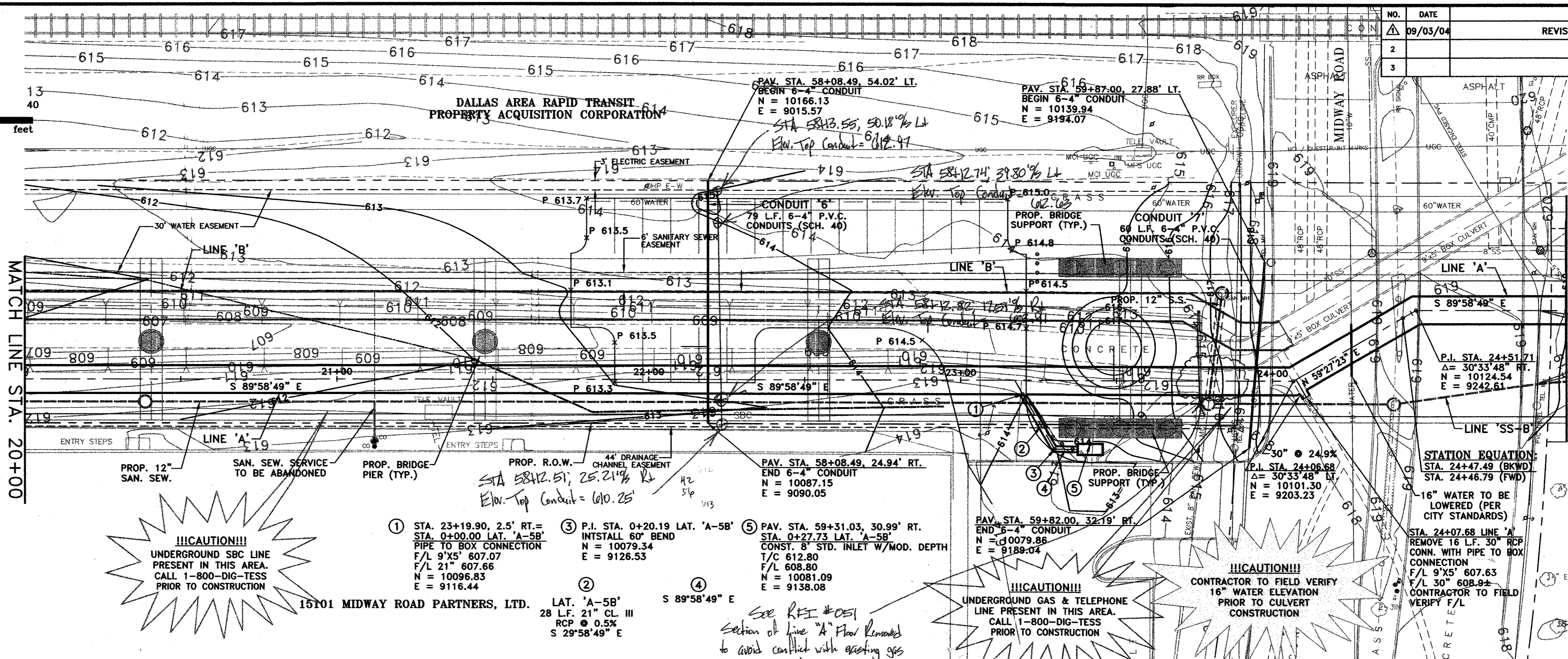
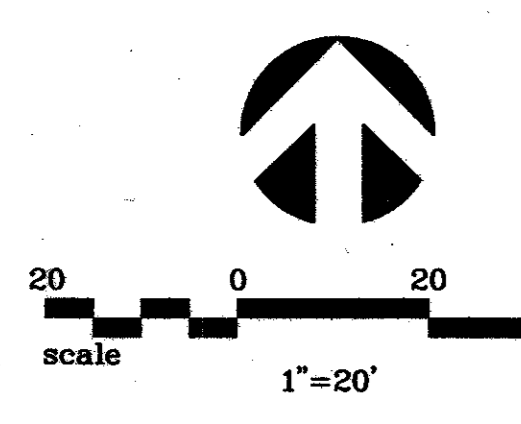


NO.	DATE	REVISION	APPROV.
1	09/03/04	REVISED GRADING	A.K.C.
2			
3			



!!!CAUTION!!!
 UNDERGROUND SBC LINE
 PRESENT IN THIS AREA.
 CALL 1-800-DIG-TESS
 PRIOR TO CONSTRUCTION

- ① STA. 23+19.90, 2.5' RT. = STA. 0+00.00 LAT. 'A-5B' PIPE TO BOX CONNECTION
 F/L 9'x5' 607.07
 F/L 21' 607.66
 N = 10096.83
 E = 9116.44
- ② LAT. 'A-5B' 28' L.F. 21' CL. III R/C @ 0.5% S 29°58'49" E
- ③ P.I. STA. 0+20.19 LAT. 'A-5B' INSTALL 60" BEND N = 10079.34 E = 9126.53
- ④ S 89°58'49" E
- ⑤ PAV. STA. 59+31.03, 30.99' RT. STA. 0+27.73 LAT. 'A-5B' CONST. 8" STD. INLET W/MOD. DEPTH T/C 612.80 F/L 608.80 N = 10081.09 E = 9138.08

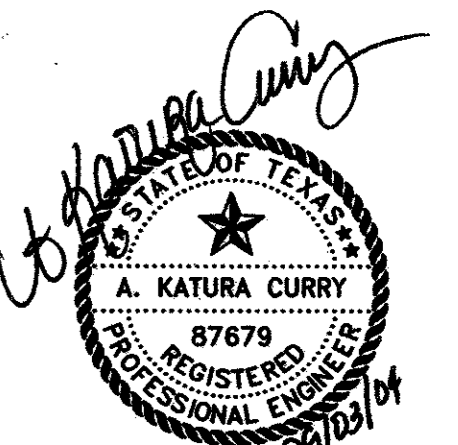
See REF #051
 Section of Line 'A' Floor Removed to avoid conflict with existing gas line.

!!!CAUTION!!!
 CONTRACTOR TO FIELD VERIFY 16" WATER ELEVATION PRIOR TO CULVERT CONSTRUCTION

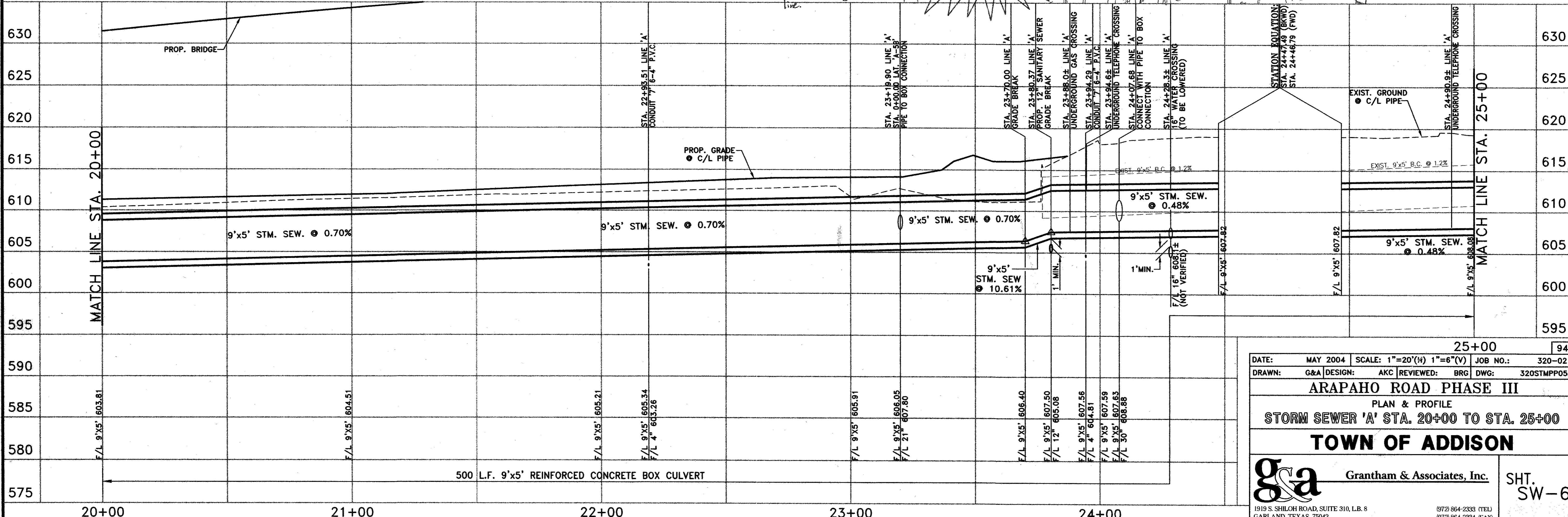
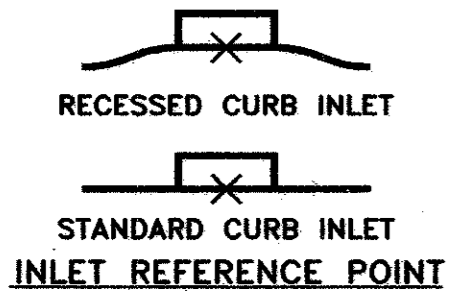
STATION EQUATION:
 STA. 24+47.49 (BKWD)
 STA. 24+46.79 (FWD)
 Δ = 30°33'48" RT.
 N = 10124.54
 E = 9242.61

NOTE
 REFER TO SW-1 FOR STORM SEWER NOTES

!!!CAUTION!!!
 18" SBC DUCT BANK TO REMAIN



THE SEAL APPEARING ON THIS DOCUMENT WAS AUTHORIZED BY:
 A. KATURA CURRY
 ON 9-3-04.
 ALTERATION OF A SEALED DOCUMENT WITHOUT PROPER NOTIFICATION TO THE RESPONSIBLE ENGINEER IS AN OFFENSE UNDER THE TEXAS ENGINEERING PRACTICE ACT.



DATE:	MAY 2004	SCALE:	1"=20'(H) 1"=6'(V)	JOB NO.:	320-02
DRAWN:	G&A	DESIGN:	AKC	REVIEWED:	BRG
ARAPAHO ROAD PHASE III					
PLAN & PROFILE					
STORM SEWER 'A' STA. 20+00 TO STA. 25+00					
TOWN OF ADDISON					
g&a Grantham & Associates, Inc.				SHT. SW-6	
1919 S. SHILOH ROAD, SUITE 310, L.B. 8 GARLAND, TEXAS 75042 (972) 864-2333 (TEL) (972) 864-2334 (FAX)					