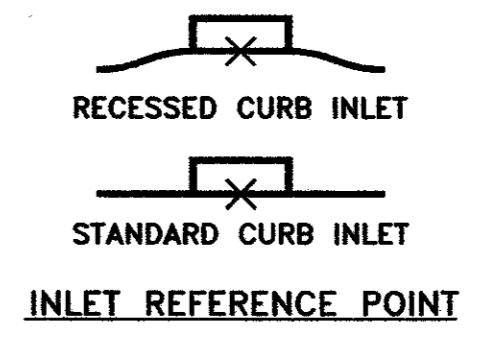
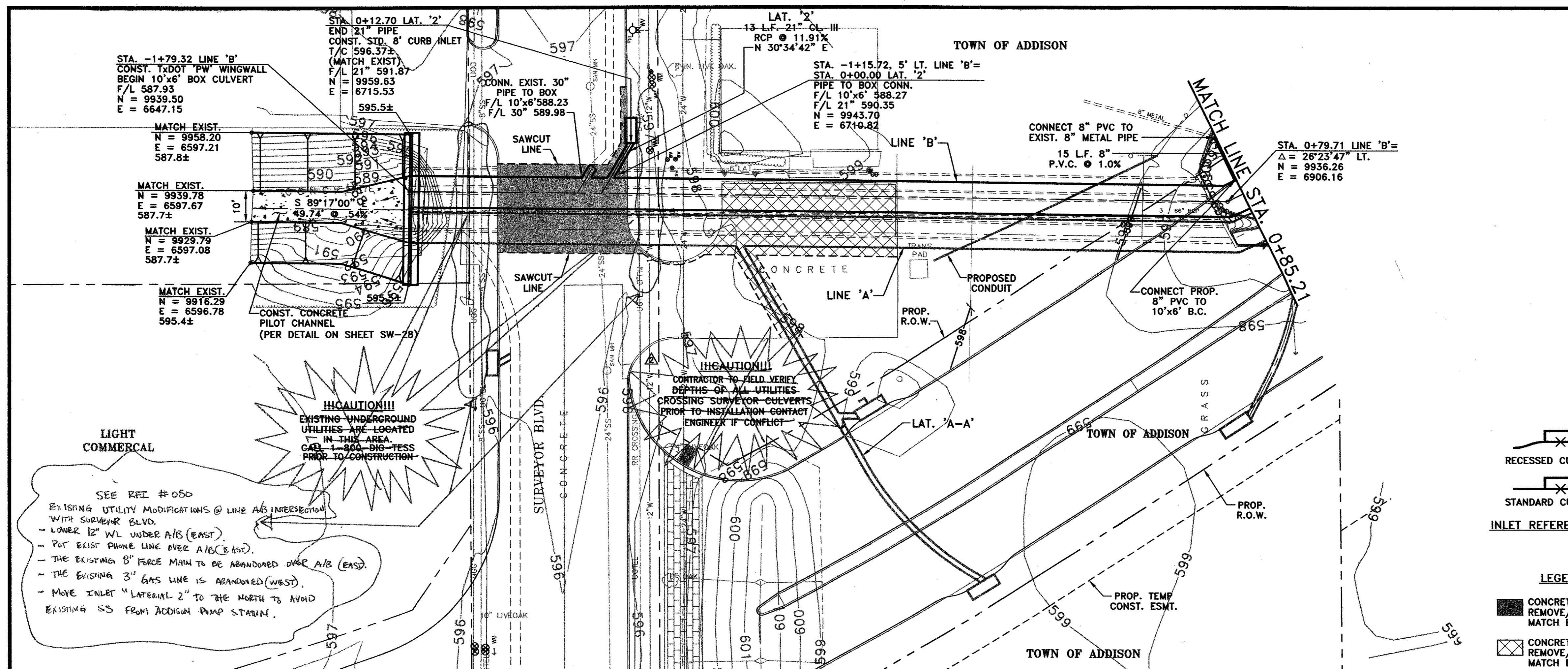
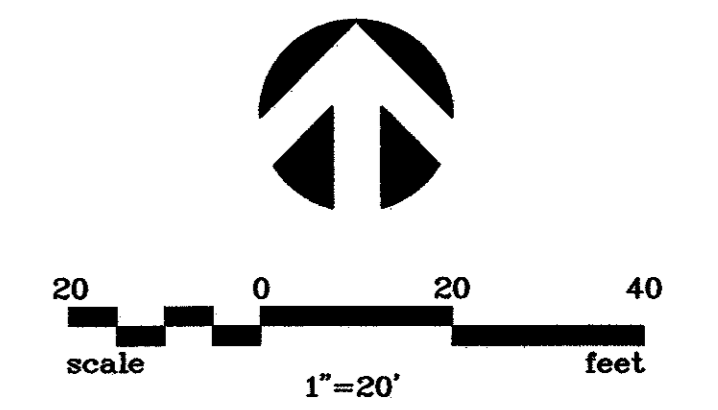


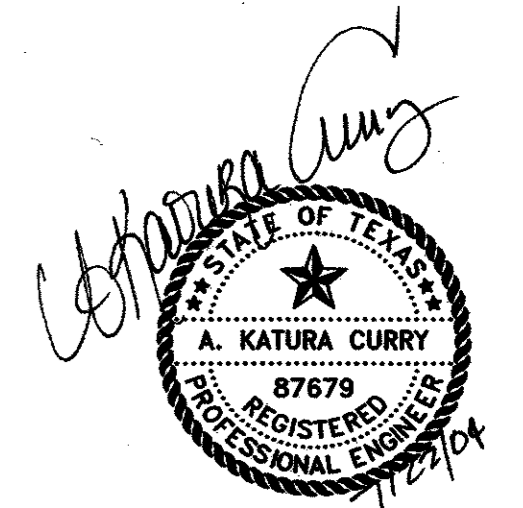
NO.	DATE	REVISION	APPROV.
1			
2	06/28/04	REVISED PER G & A	A.K.C.
3			



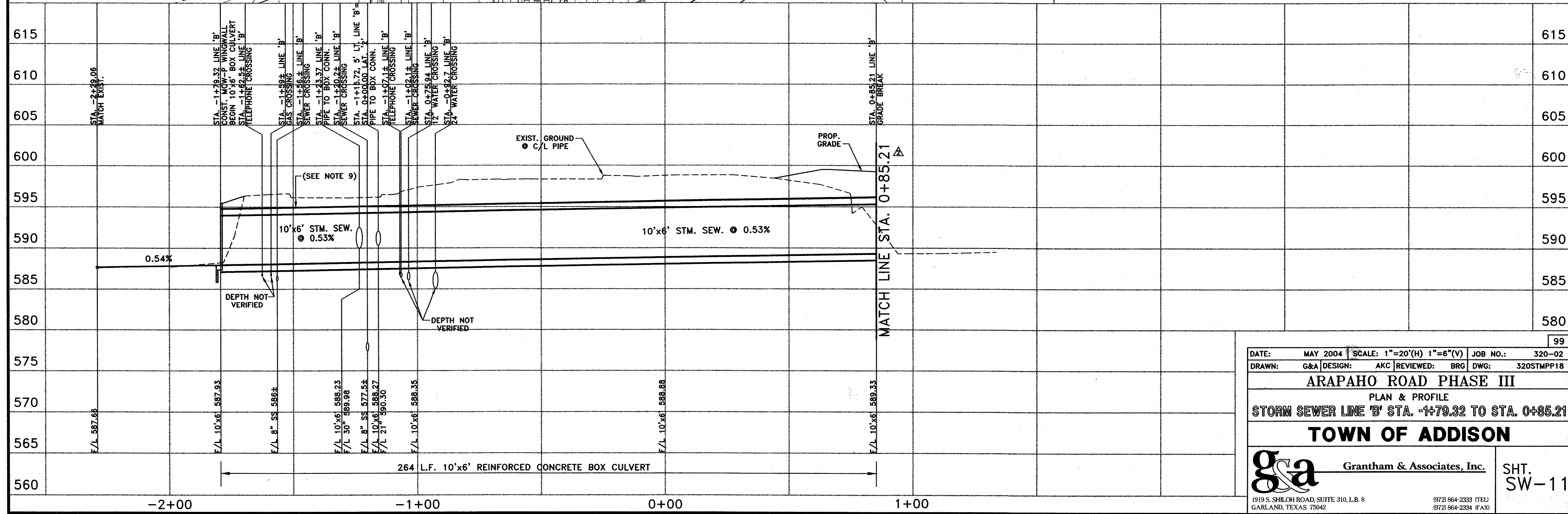
LEGEND

- CONCRETE PAVEMENT REMOVE/REPLACE MATCH EXIST.
- CONCRETE DRIVE REMOVE/REPLACE MATCH EXIST.

NOTE
REFER TO SW-1 FOR STORM SEWER NOTES



THE SEAL APPEARING ON THIS DOCUMENT WAS AUTHORIZED BY: A. KATURA CURRY ON 7-21-04. ALTERATION OF A SEALED DOCUMENT WITHOUT PROPER NOTIFICATION TO THE RESPONSIBLE ENGINEER IS AN OFFENSE UNDER THE TEXAS ENGINEERING PRACTICE ACT.



DATE: MAY 2004	SCALE: 1"=20'(H) 1"=6"(V)	JOB NO.: 320-02
DRAWN: G&A	DESIGN: AKC	REVIEWED: BRG
ARAPAHO ROAD PHASE III		DWG: 320STMP18
PLAN & PROFILE		
STORM SEWER LINE 'B' STA. -1+79.32 TO STA. 0+85.21		
TOWN OF ADDISON		
g&a Grantham & Associates, Inc.		SHT. SW-11
1915 S. SHILOH ROAD, SUITE 310, L.B. 8 GARLAND, TEXAS 75042		(972) 864-2333 (TEL) (972) 864-2334 (FAX)