

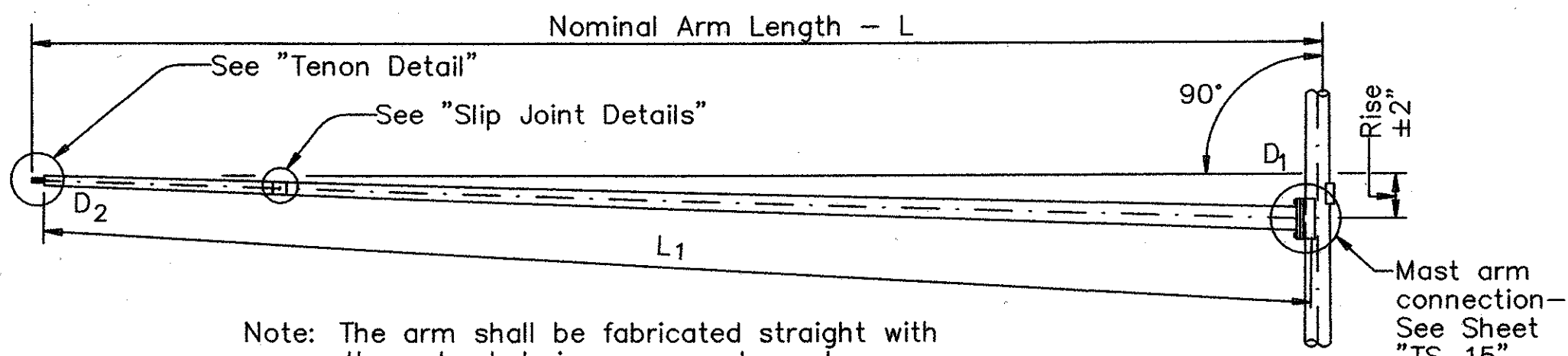
NO.	DATE	REVISION	APPROV.
1			
2			
3			

Arm Length	ROUND POLES					POLYGONAL POLES					Foundation Type
	D <sub>B</sub>	D <sub>19</sub>	D <sub>24</sub>	D <sub>30</sub>	① thk	D <sub>B</sub>	D <sub>19</sub>	D <sub>24</sub>	D <sub>30</sub>	① thk	
ft.	in.	in.	in.	in.	in.	in.	in.	in.	in.	in.	
20	10.5	7.8	7.1	6.3	.179	11.5	8.5	7.7	6.8	.179	30-A
24	11.0	8.3	7.6	6.8	.179	12.0	9.0	8.2	7.3	.179	30-A
28	11.5	8.8	8.1	7.3	.179	12.5	9.5	8.7	7.8	.179	30-A
32	12.5	9.8	9.1	8.3	.179	12.0	9.0	8.2	7.3	.239	30-A
36	12.0	9.3	8.6	7.8	.239	12.5	9.5	8.7	7.8	.239	36-A
40	12.0	9.3	8.6	7.8	.239	13.5	10.5	9.7	8.8	.239	36-A
44	12.5	9.8	9.1	8.3	.239	14.0	11.0	10.2	9.3	.239	36-A
48	13.0	10.3	9.6	8.8	.239	15.0	12.0	11.2	10.3	.239	36-A

Arm Length	ROUND ARMS					POLYGONAL ARMS				
	L <sub>1</sub>	D <sub>1</sub>	D <sub>2</sub>	① thk	Rise	L <sub>1</sub>	D <sub>1</sub>	② D <sub>2</sub>	① thk	Rise
ft.	ft.	in.	in.	in.		ft.	in.	in.	in.	
20	19.1	6.5	3.8	.179	1'-9"	19.1	7.0	3.5	.179	1'-8"
24	23.1	7.5	4.3	.179	1'-10"	23.1	7.5	3.5	.179	1'-9"
28	27.1	8.0	4.2	.179	1'-11"	27.1	8.0	3.5	.179	1'-10"
32	31.0	9.0	4.7	.179	2'-1"	31.0	9.0	3.5	.179	2'-0"
36	35.0	9.5	4.6	.179	2'-4"	35.0	10.0	3.5	.179	2'-1"
40	39.0	9.5	4.1	.239	2'-8"	39.0	9.5	3.5	.239	2'-3"
44	43.0	10.0	4.1	.239	2'-11"	43.0	10.0	3.5	.239	2'-6"
48	47.0	10.5	4.1	.239	3'-4"	47.0	11.0	3.5	.239	2'-9"

D<sub>B</sub> = Pole Base O.D.  
D<sub>19</sub> = Pole Top O.D. with no Luminaire and no ILSN  
D<sub>24</sub> = Pole Top O.D. with ILSN w/out Luminaire  
D<sub>30</sub> = Pole Top O.D. with Luminaire  
D<sub>1</sub> = Arm Base O.D.  
D<sub>2</sub> = Arm End O.D.  
L<sub>1</sub> = Shaft Length  
L = Nominal Arm Length

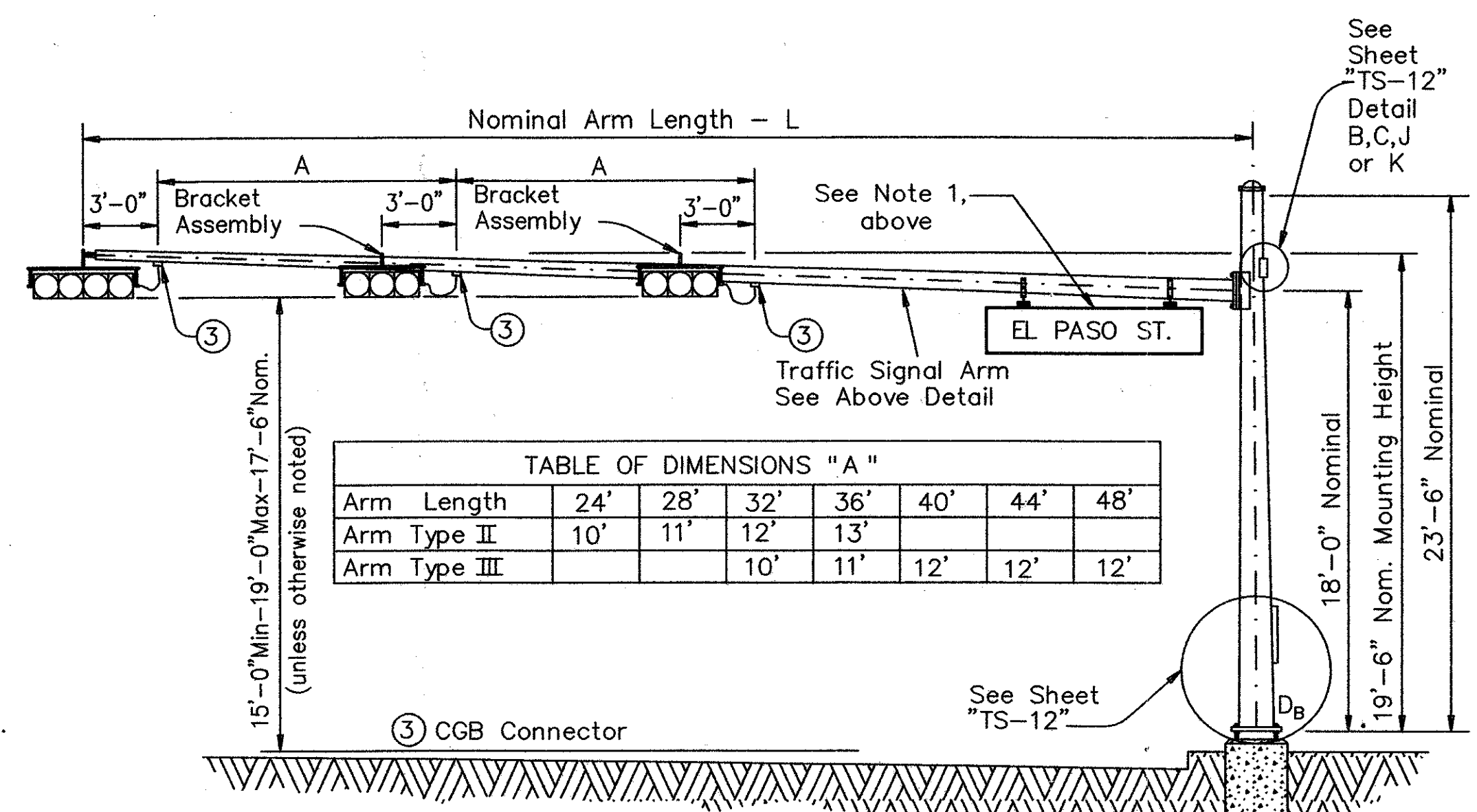
- ① Thickness shown are minimums, thicker materials may be used.
- ② D<sub>2</sub> may be increased by up to 1" for polygonal arms.



Note: The arm shall be fabricated straight with the unloaded rise measured as shown.

TRAFFIC SIGNAL ARM  
(Fixed Mount)

NOTE:  
1. INTERNALLY ILLUMINATED STREET SIGN TO BE SUPPLIED BY THE TOWN AND INSTALLED BY CONTRACTOR, ON SIGNAL POLE T-2 AT SURVEYOR INTERSECTION.



Arm Length	24'	28'	32'	36'	40'	44'	48'
Arm Type II	10'	11'	12'	13'	14'	15'	16'
Arm Type III			10'	11'	12'	12'	12'

STRUCTURE ASSEMBLY

**VIBRATION WARNING**  
Mast Arms of approximately 40' or longer are subject to possible harmonic vertical vibrations in light wind conditions due to unusual combinations of signal numbers, weights or positions, arm-wind orientation, and arm-pole stiffness. Arms shall be visually inspected in 5 to 20 mph wind conditions after signal head installation and, if vertical movements with a total excursion (max positive to max negative) of more than approximately 8" are observed at arm tip, damping devices or other means shall be fitted to the arm(s). The necessary damping device(s) or other remedial measures shall be as recommended by the fabricator. Excessive vibrations shall not be allowed to continue for more than two days.

SHIPPING PARTS LIST

Ship each pole with the following attached: enlarged hand hole, pole cap, fixed-arm connection bolts and washers and any additional hardware listed in the table.

Nominal Arm Length	30' Poles With Luminaire		24' Poles With ILSN		19' Poles With No Luminaire and No ILSN	
	Above hardware plus: One (or two if ILSN attached) small hand hole, clamp-on simplex		Above hardware plus one small hand hole		See note above	
ft	Designation	Quantity	Designation	Quantity	Designation	Quantity
20	20L-80		20S-80		20-80	
24	24L-80		24S-80		24-80	
28	28L-80		28S-80		28-80	
32	32L-80		32S-80		32-80	
36	36L-80		36S-80		36-80	
40	40L-80		40S-80		40-80	1
44	44L-80		44S-80		44-80	1
48	48L-80		48S-80		48-80	

Traffic Signal Arms (1 per Pole) Ship each arm with the listed equipment attached

Nominal Arm Length	Type I Arm (1 Signal)		Type II Arm (2 Signals)		Type III Arm (3 Signals)	
	1 CGB connector		1 Bracket Assembly and 2 CGB Connectors		2 Bracket Assemblies and 3 CGB Connectors	
ft	Designation	Quantity	Designation	Quantity	Designation	Quantity
20	20I-80					
24	24I-80		24II-80			
28	28I-80		28II-80			
32			32II-80		32III-80	
36			36II-80		36III-80	
40					40III-80	1
44					44III-80	1
48					48III-80	

Luminaire Arms (1 per 30' pole)

Nominal Arm Length	Quantity
8' Arm	

④ Supply Option "A" unless otherwise noted

ILSN Arm (Max. 2 per pole) Ship with clamps, bolts and washers

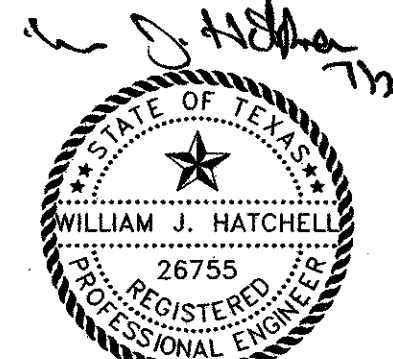
Nominal Arm Length	Quantity
7' Arm	
9' Arm	

Anchor Bolt Assemblies (1 per pole)

Anchor Bolt Diameter	Anchor Bolt Length	Quantity
1 1/2"	3'-4"	
1 3/4"	3'-10"	2

Each anchor bolt assembly consists of the following: Top and Bottom templates, 4 anchor bolts, 8 nuts, 8 flat washers, 4 lock washers and 4 nut anchor devices (Type 2) per Standard Drawing "TS-11".

Templates may be removed for shipment.



THE SEAL APPEARING ON THIS DOCUMENT WAS AUTHORIZED BY WILLIAM J. HATCHELL ON 7-21-04. ALTERATION OF A SEALED DOCUMENT WITHOUT PROPER NOTIFICATION TO THE RESPONSIBLE ENGINEER IS AN OFFENSE UNDER THE TEXAS ENGINEERING PRACTICE ACT.

NOTE:  
ALL SIGNAL HEADS TO BE VERTICAL MOUNT WITH BACKPLATES. ALL SIGNAL HEADS SHALL BE BLACK POLYCARBONATE (CHAPEL HILL-TCT-CROUSE HINDS OR APPROVED EQUAL)

THIS DETAIL SHEET WAS OBTAINED FROM TXDOT

DATE: MAY 2004 SCALE: NOT TO SCALE JOB NO.: 320  
DRAWN: G&A DESIGN: BRG REVIEWED: BRG DWG: 320DETAILS-SIGN  
**ARAPAHO ROAD PHASE III**  
**TRAFFIC SIGNAL SUPPORT STRUCTURES**  
**SIGNAL MAST ARM ASSEMBLY - 1 of 2**  
**TOWN OF ADDISON**  
**g&a** Grantham & Associates, Inc. SHT. TS-16  
1919 S. SHILOH ROAD, SUITE 310, L.B. 8 GARLAND, TEXAS 75042 (972) 864-2333 (TEL) (972) 864-2334 (FAX)