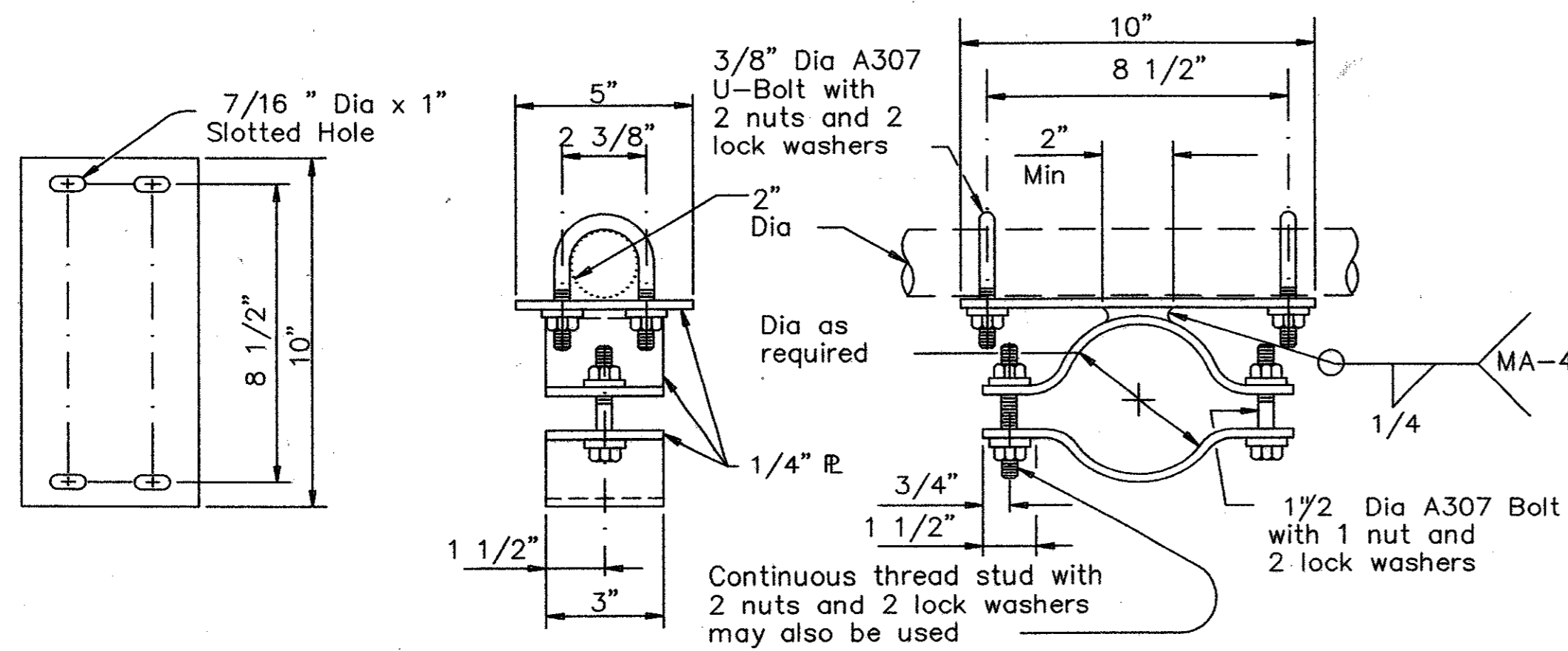
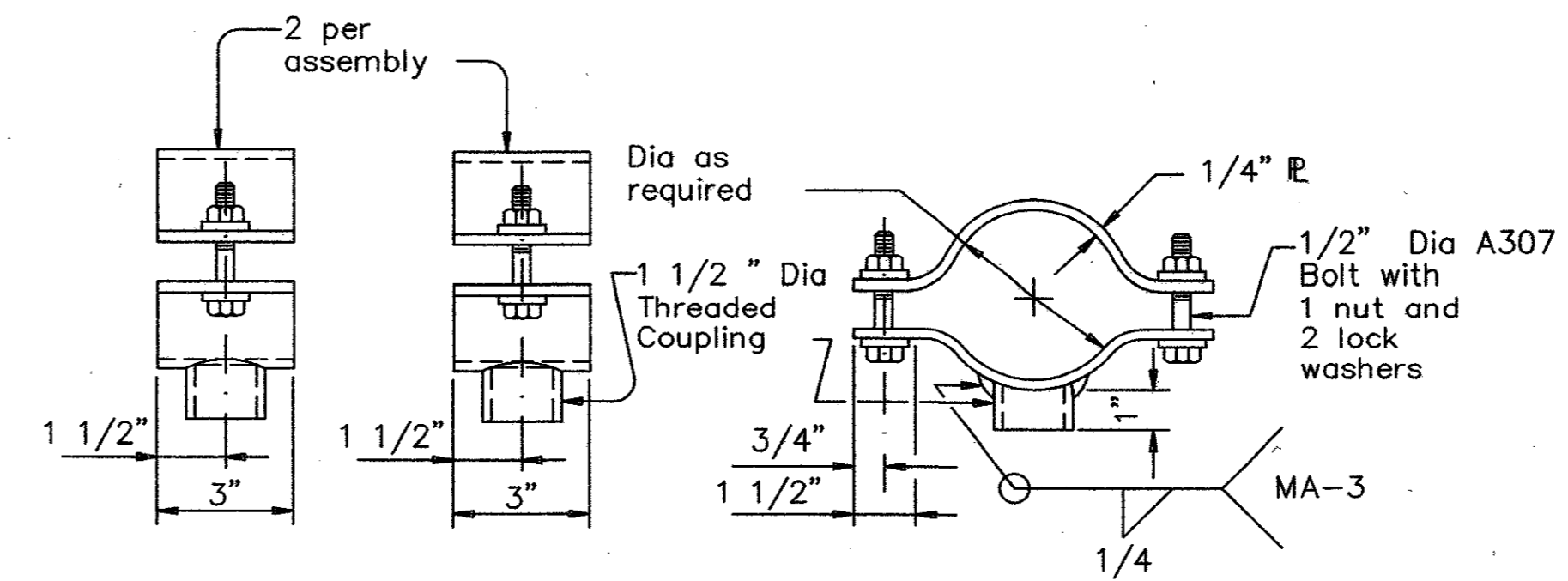


NO.	DATE	REVISION	APPROV.
1			
2			
3			



BRACKET ASSEMBLY DETAILS OPTION A



BRACKET ASSEMBLY DETAILS OPTION B

BRACKET ASSEMBLY OPTION C

Stainless steel bands and cast bracket as in "Astro-Brac" with 1 1/2" Dia Threaded Coupling.

GENERAL NOTES:

Design conforms to 1994 AASHTO Standard Specifications for Structural Supports for Highway Signs, Luminaires, and Traffic Signals and Interim Specifications thereto. Design Wind Speed equals 80 mph plus a 1.3 gust factor.

Poles are designed to support one 8'-0" luminaire arm, one 9'-0" internally lighted street name sign and one traffic signal arm with a length as tabulated. The specified luminaire load applied at the end of the luminaire arm equals 75 lbs vertical dead load plus the horizontal wind load on an effective projected area of 1.5 sq ft. The specified internally lighted street name sign load applied 4.5 ft from the centerline of the pole equals 85 lbs vertical dead load plus horizontal wind load on an effective projected area of 11.5 sq ft. The specified signal load applied at the end of the traffic signal arm equals 180 lbs vertical dead load plus the horizontal wind load on an effective projected area of 32.4 sq ft (actual area times drag coefficient).

See Standard Sheet "TS-12" for pole details, "TS-16" for traffic signal arm connection details, "TS-15" for internally lighted street name sign arm connection details, "TS-14" for luminaire arm and connection details, "TS-21" for internally lighted street name sign details, and "TS-11" for anchor bolt and foundation details. See "TS-16" for material specifications.

Fabrication shall be in accordance with the Specifications and with the details, dimensions, and weld procedures shown herein. Weld references call for preapproved weld procedures which the Fabricator must obtain prior to fabrication. Miscellaneous welds which do not call for preapproved weld procedures are nevertheless subject to rejection for poor workmanship. Materials, fabrication tolerances, and shipping practices shall meet the requirements of this sheet and the Specifications.

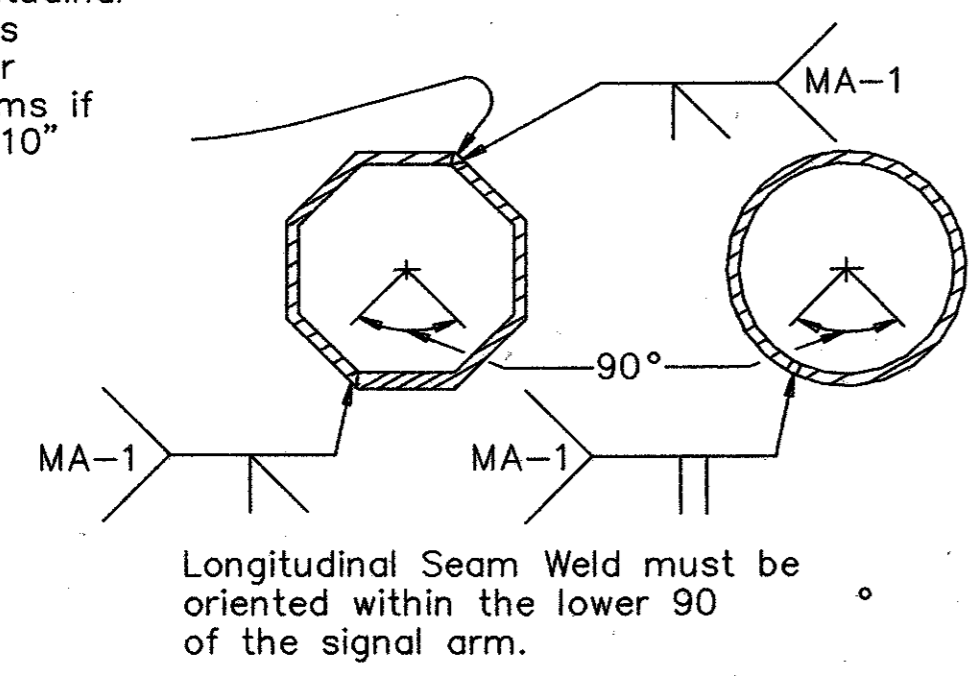
Unless otherwise noted, all parts shall be galvanized in accordance with the Specifications.

Special design require submission of shop drawings in accordance with the item "Steel Structures".

All mounting brackets for signal heads to be Pelco Astro-BRAC or approved equal.

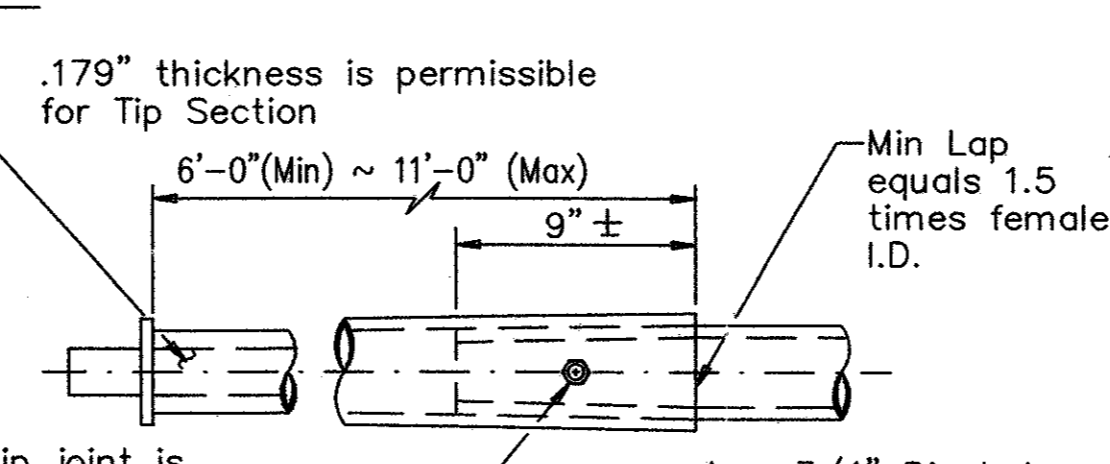
All mounting brackets for internal illuminated signs are also Pelco hardware.

Second longitudinal Seam Weld is permitted for polygonal arms if D₁ exceeds 10"



Longitudinal Seam Weld must be oriented within the lower 90° of the signal arm.

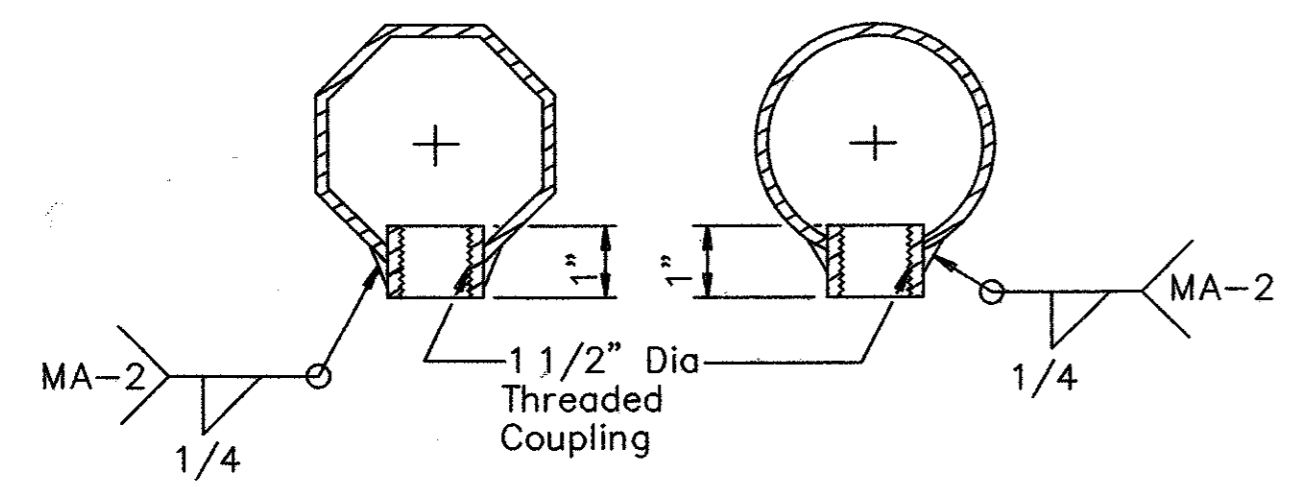
ARM WELD DETAIL



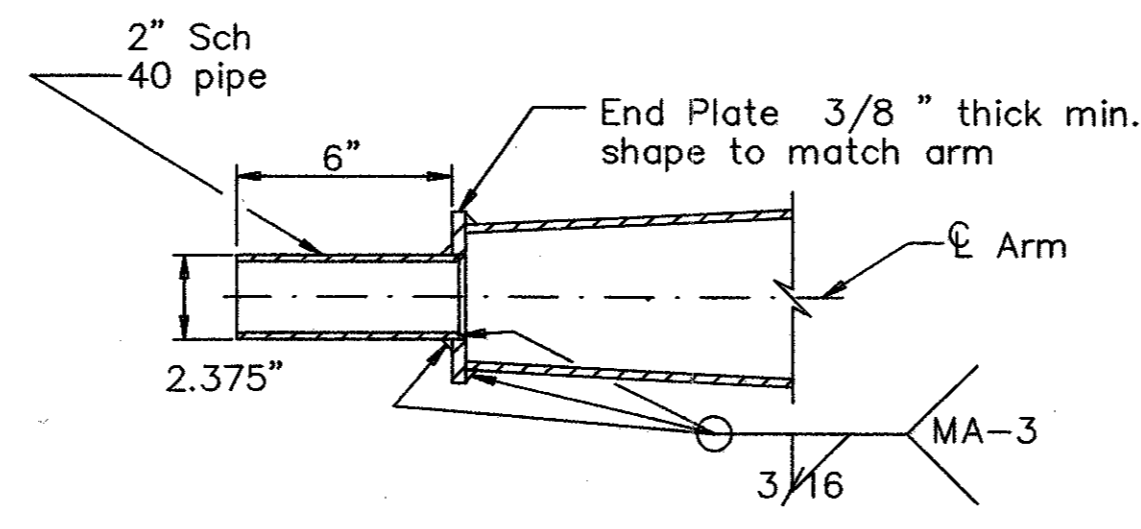
Note: A slip joint is permissible for arms 40' and greater in length. The slip joint shall be made in the shop, but may be match marked and shipped disassembled.

4 - 3/4" Dia holes and 1- 5/8" Dia galv A307 bolt. Tack weld nut to thread projection after making joint. Repair damaged galvanizing in accordance with the specifications.

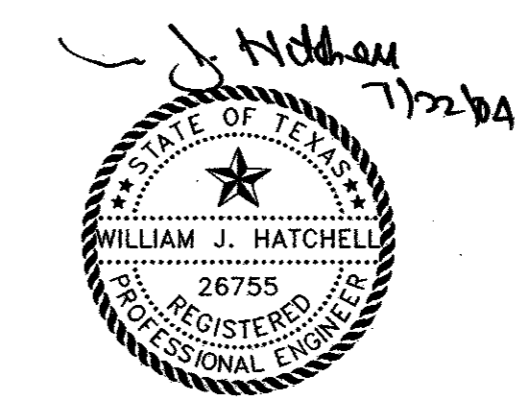
SLIP JOINT DETAIL



COUPLING DETAILS



TENON DETAIL



THE SEAL APPEARING ON THIS DOCUMENT WAS AUTHORIZED BY: WILLIAM J. HATCHELL ON 7-21-04. ALTERATION OF A SEALED DOCUMENT WITHOUT PROPER NOTIFICATION TO THE RESPONSIBLE ENGINEER IS AN OFFENSE UNDER THE TEXAS ENGINEERING PRACTICE ACT.

THIS DETAIL SHEET WAS OBTAINED FROM TXDOT

DATE:	MAY 2004	SCALE:	NOT TO SCALE	JOB NO.:	320
DRAWN:	G&A	DESIGN:	BRG	REVIEWED:	BRG
DWG: 320DETAILS-SIGN					
ARAPAHO ROAD PHASE III					
TRAFFIC SIGNAL SUPPORT STRUCTURES					
SIGNAL MAST ARM ASSEMBLY - 2 of 2					
TOWN OF ADDISON					
g&a				Grantham & Associates, Inc.	
1919 S. SHILOH ROAD, SUITE 310, L.B. 8 GARLAND, TEXAS 75042				(972) 864-2333 (TEL) (972) 864-2334 (FAX)	

SHT. TS-17