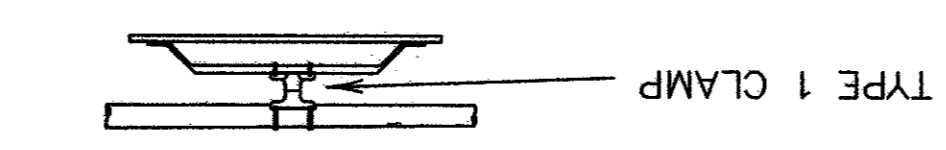
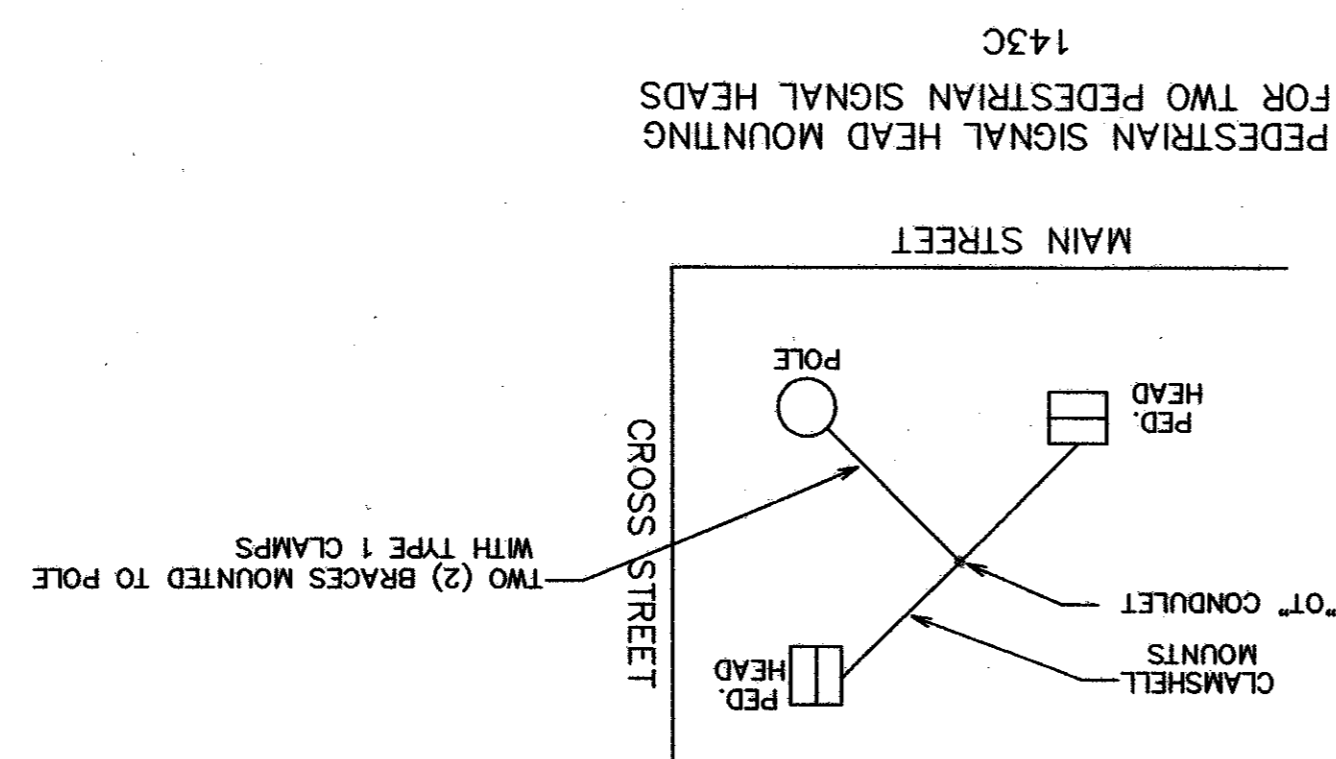
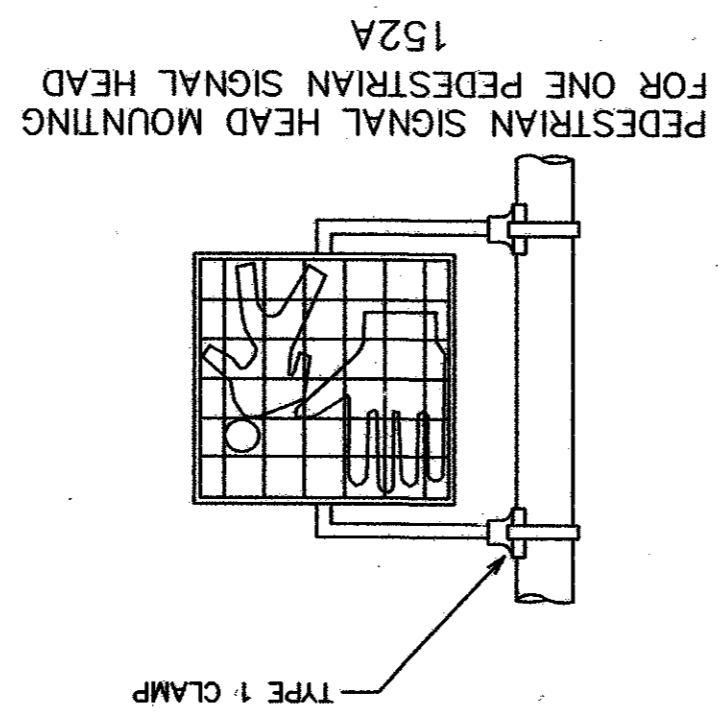
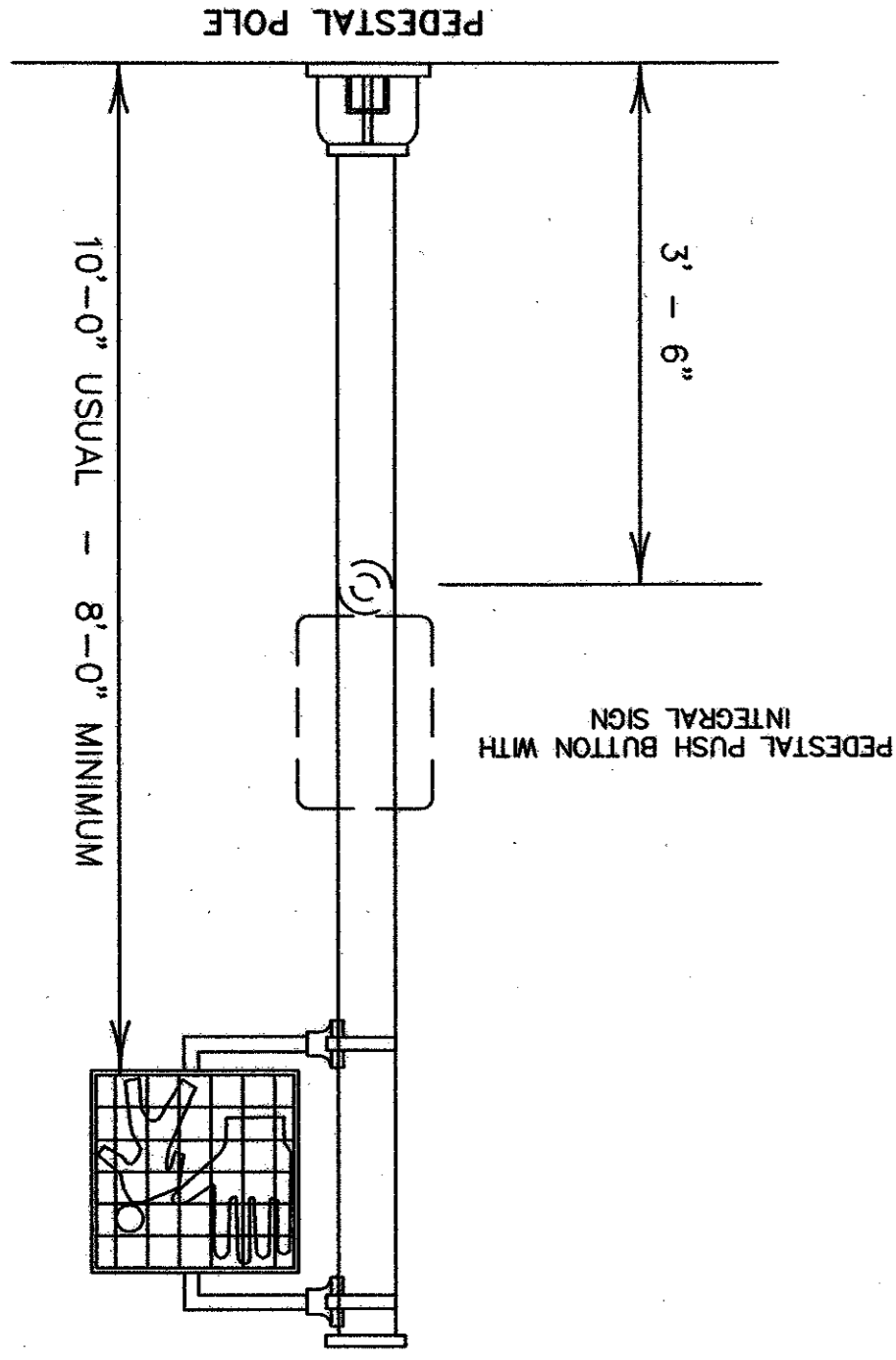
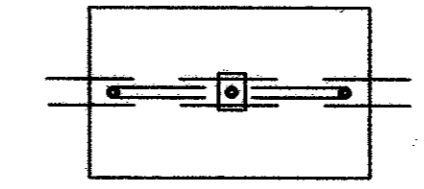


NO.	DATE	REVISION	APPROV.
3			
2			
1			

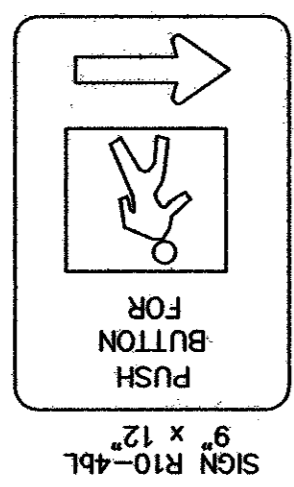
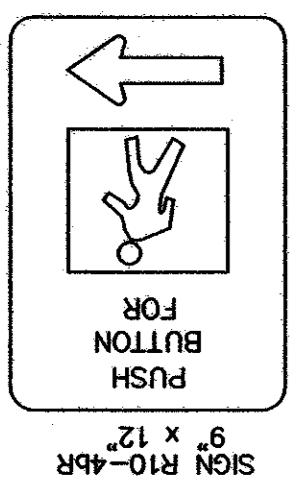
NOTE: THE POLE ON THIS DRAWING IS SHOWN AS AN EXAMPLE ONLY. POLES OF SIMILAR DESIGN FOR ANY CROSS SECTION WHICH MEET THE SPECIFICATIONS AND REQUIREMENTS SHOWN ON THESE DRAWINGS AND ARE APPROVED BY THE TOWN WILL BE DEEMED ACCEPTABLE.



\* ONE (1) CLAMP SHALL BE USED ON SIGNS LESS THAN OR EQUAL TO 10'-0" IN LENGTH.  
 \* TWO (2) CLAMPS SHALL BE USED ON SIGNS GREATER THAN 10'-0" IN LENGTH.

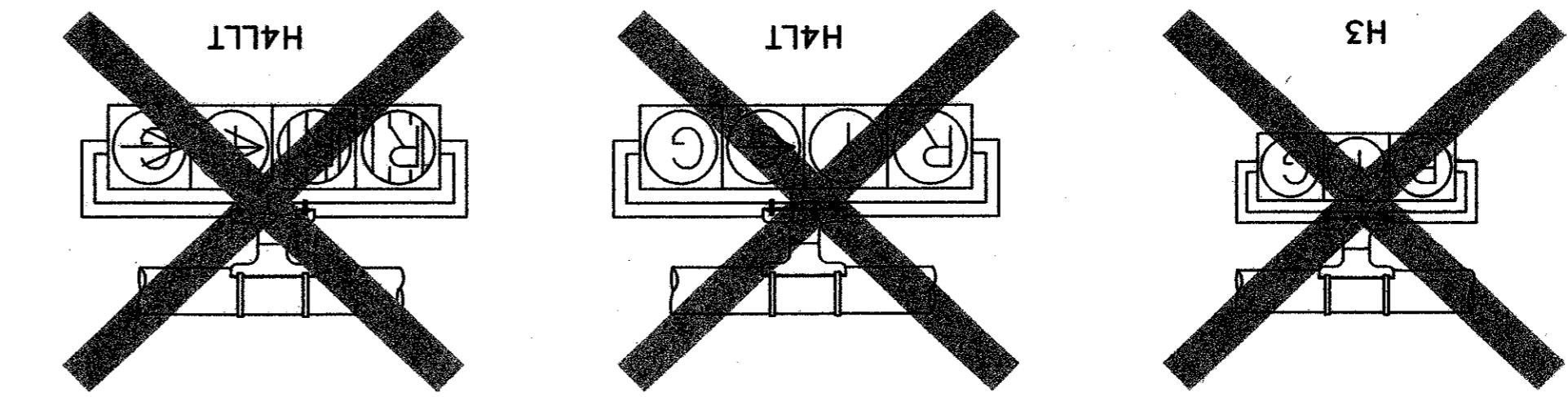


SIGN OR DAMPENING DEVICE ATTACHMENT FOR MAST ARMS

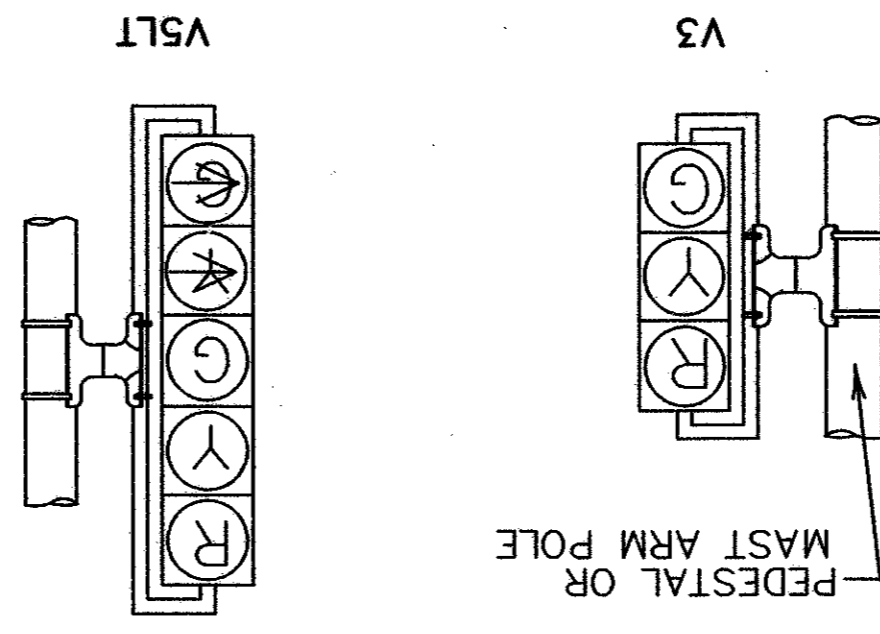
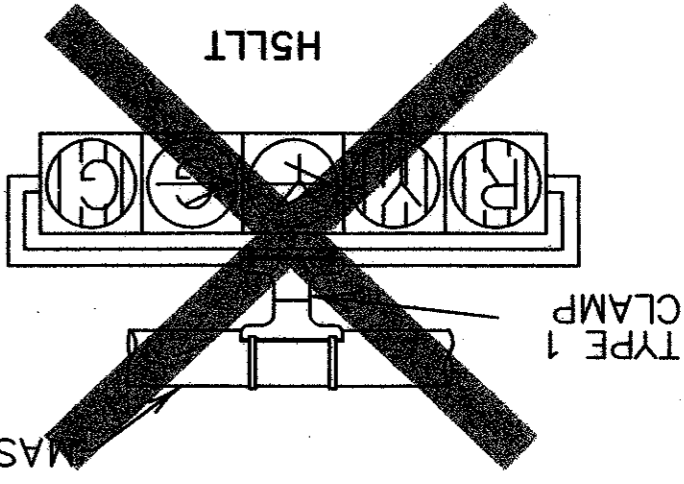
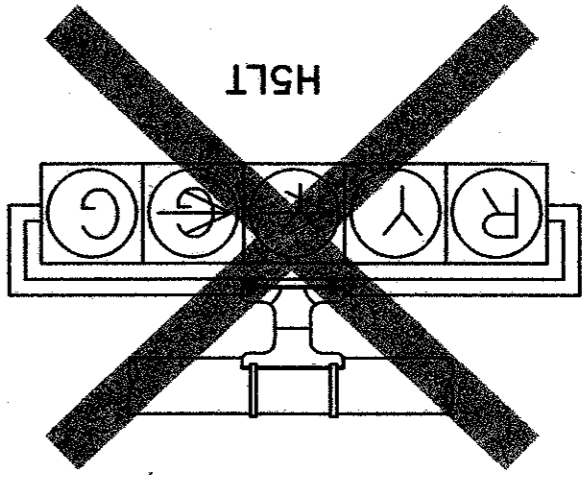


PEDESTRIAN PUSHBUTTON SIGN DETAILS

PEDESTRIAN PUSHBUTTON SIGN DETAILS



NOTE: ALL SIGNAL HEADS TO BE MOUNTED VERTICALLY ON MAST ARM PER MANUFACTURERS SPECIFICATIONS.

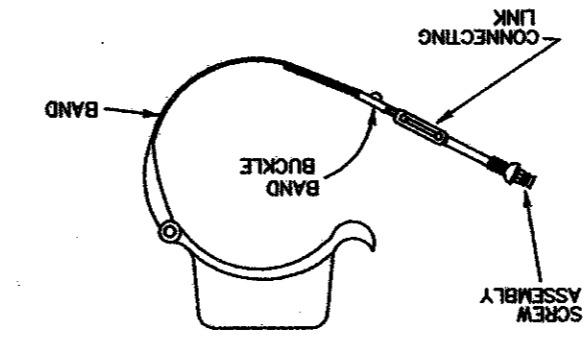


NOTE: VERTICAL LOUVERS SHALL BE INSTALLED ON HORIZONTAL MOUNTED SIGNALS, HORIZONTAL LOUVERS SHALL BE INSTALLED ON VERTICAL MOUNTED SIGNAL WHEN NEEDED.



TYPE 2 CLAMP KIT

SHOULD BE INSTALLED WHEN ROTATION ABOUT HORIZONTAL AND VERTICAL AXES ARE NEEDED.



NOTE: CLAM SHELL MOUNTING HARDWARE SHALL BE USED INSTEAD OF MOUNTING HARDWARE SHOWN ABOVE, AS APPROVED BY THE ENGINEER. ICC P/N 4805 DH OR APPROVED EQUAL.

- NOTES:
1. PEDESTRIAN SIGNAL HEADS SHALL BE MOUNTED WITH TYPE 1 CLAMPS AND APPROPRIATE TUBING.
  2. ALL PEDESTRIAN SIGNAL HEADS SHALL BE INSTALLED ON THE AWAY-FROM-TRAFFIC SIDE OF THE PEDESTAL OR MAST POLE.
  3. ALL WIRING FOR PEDESTRIAN SIGNALS SHALL BE TOTALLY ENCLOSED WITHIN THE SIGNAL MOUNTING HARDWARE.
  4. ALL PEDESTRIAN SIGNAL HEADS AND PUSH BUTTON SIGNS SHALL DISPLAY THE SYMBOLIZED MESSAGES SHOWN ABOVE.

DATE: MAY 2004 SCALE: NOT TO SCALE JOB NO.: 320  
 DRAWN: G&A DESIGN: BRG REVIEWED: BRG DWG: 320DETAILS-TRAF  
**ARAPAHO ROAD PHASE III**  
**TRAFFIC AND PEDESTRIAN SIGNAL**  
**HEAD IDENTIFICATION**  
**TOWN OF ADDISON**

THIS DETAIL SHEET WAS OBTAINED FROM TxDOT

THE SEAL APPEARING ON THIS DOCUMENT WAS AUTHORIZED BY: WILLIAM J. HATCHELL ON 7-21-04

ALTERATION OF A SEALED DOCUMENT WITHOUT PROPER NOTIFICATION TO THE RESPONSIBLE ENGINEER IS AN OFFENSE UNDER THE TEXAS ENGINEERING PRACTICE ACT.

1915 S. SHILOH ROAD SUITE 310, L.B. 8 GARLAND, TEXAS 75042 (972) 864-2334 (FAX)

Grantham & Associates, Inc.

TS-19