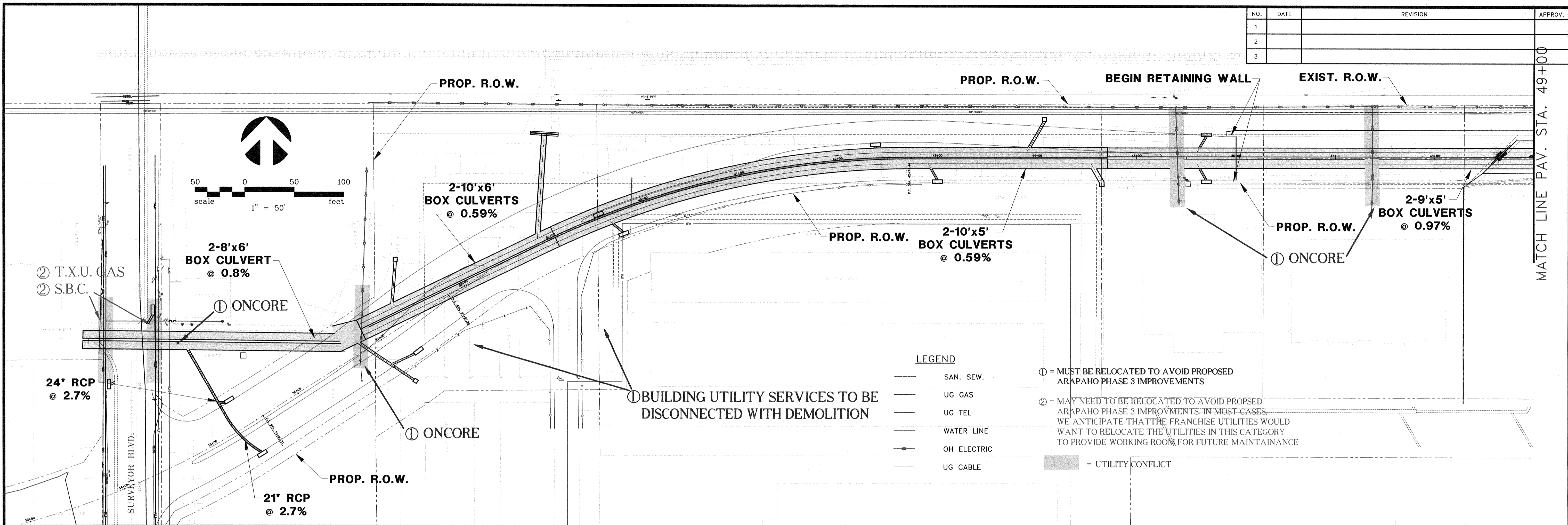


NO.	DATE	REVISION	APPROV.
1			
2			
3			

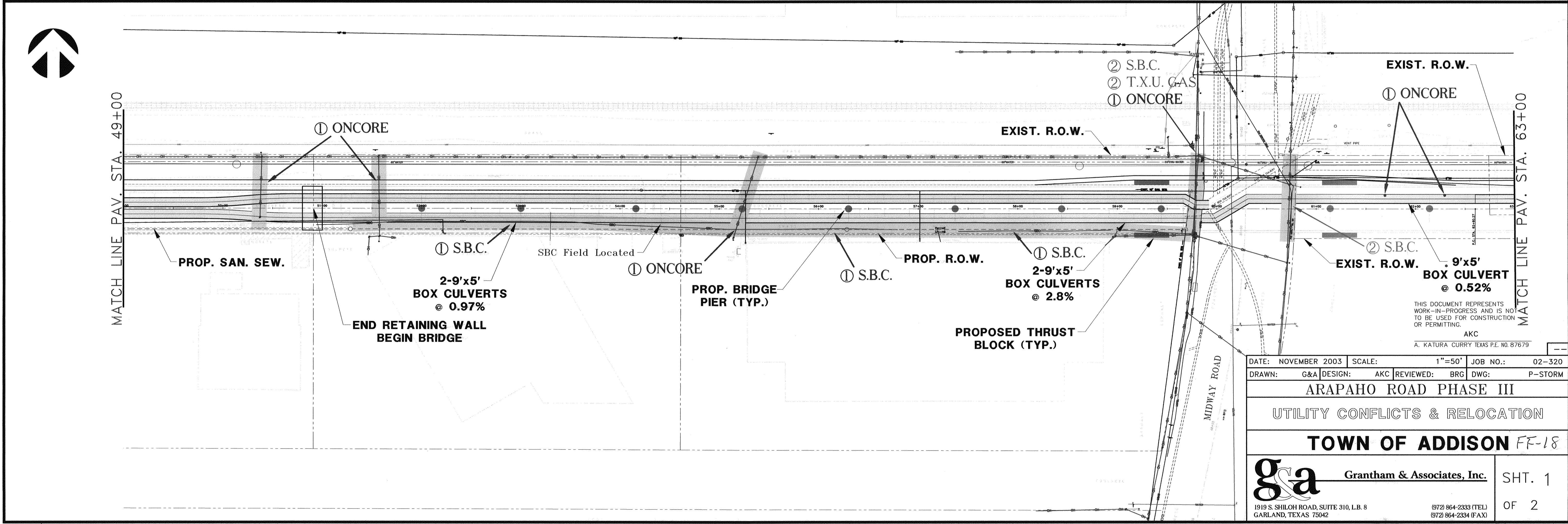
FF-18



**LEGEND**

- SAN. SEW.
  - UG GAS
  - UG TEL
  - WATER LINE
  - OH ELECTRIC
  - UG CABLE
- ① = MUST BE RELOCATED TO AVOID PROPOSED ARAPAHO PHASE 3 IMPROVEMENTS
- ② = MAY NEED TO BE RELOCATED TO AVOID PROPOSED ARAPAHO PHASE 3 IMPROVEMENTS. IN MOST CASES, WE ANTICIPATE THAT THE FRANCHISE UTILITIES WOULD WANT TO RELOCATE THE UTILITIES IN THIS CATEGORY TO PROVIDE WORKING ROOM FOR FUTURE MAINTAINANCE
- = UTILITY CONFLICT

① BUILDING UTILITY SERVICES TO BE DISCONNECTED WITH DEMOLITION



DATE: NOVEMBER 2003	SCALE: 1"=50'	JOB NO.: 02-320
DRAWN: G&A	DESIGN: AKC	REVIEWED: BRG
		DWG: P-STORM

**ARAPAHO ROAD PHASE III**

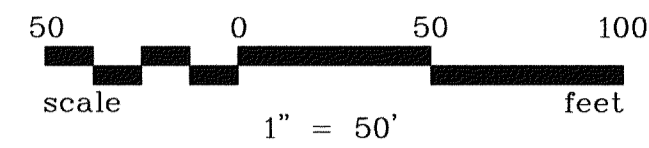
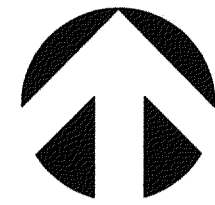
**UTILITY CONFLICTS & RELOCATION**

**TOWN OF ADDISON FF-18**

**g&a** Grantham & Associates, Inc. SHT. 1

1919 S. SHILOH ROAD, SUITE 310, L.B. 8 GARLAND, TEXAS 75042 (972) 864-2333 (TEL) (972) 864-2334 (FAX) OF 2

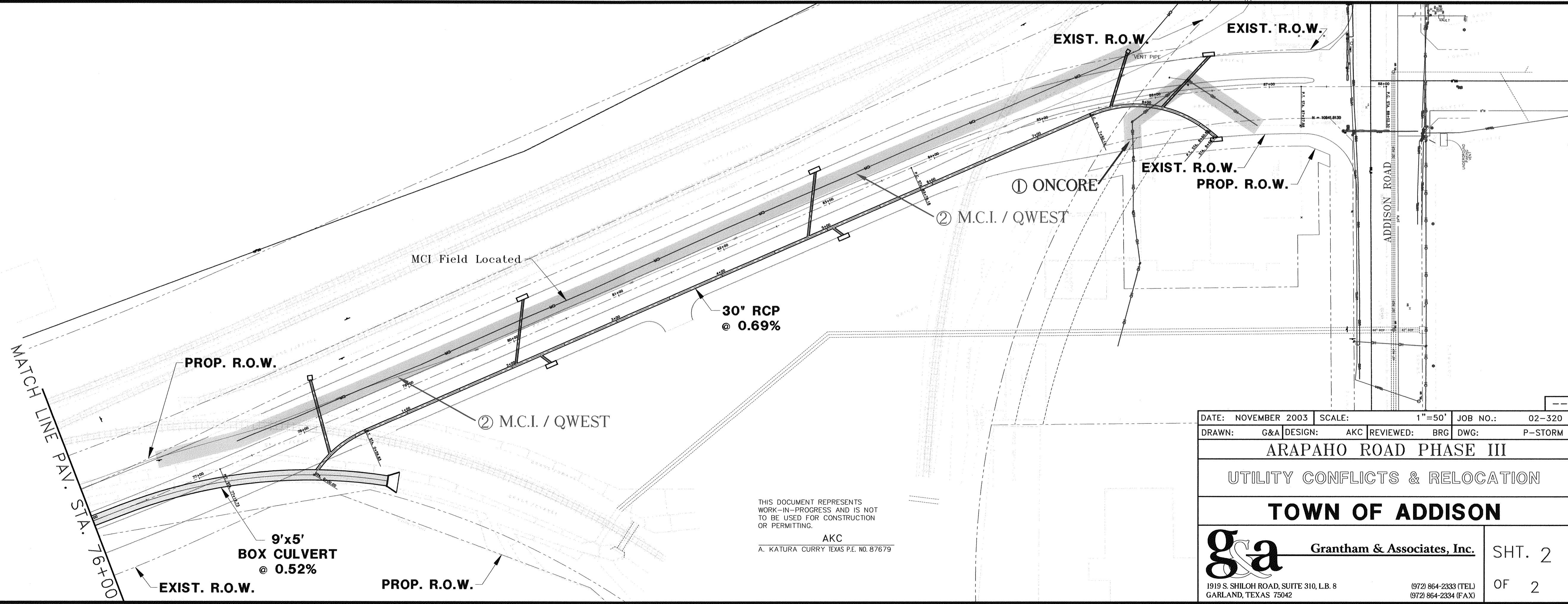
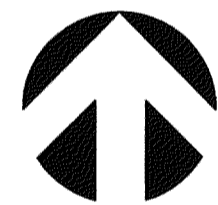
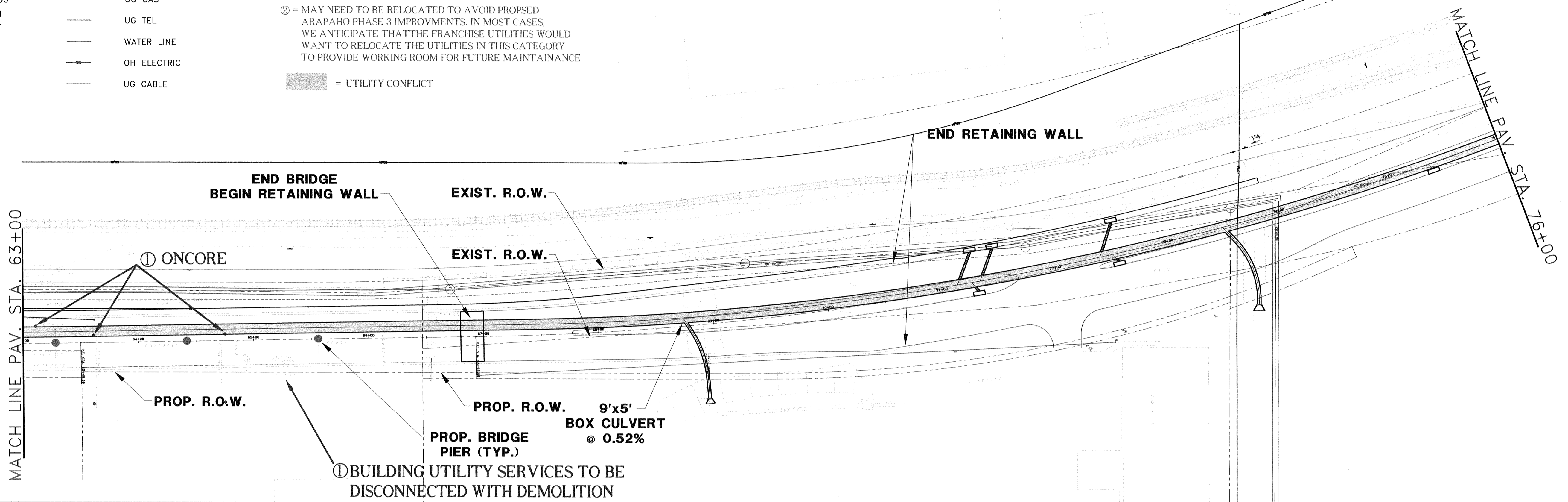
NO.	DATE	REVISION	APPROV.
1			
2			
3			



**LEGEND**

- SAN. SEW.
- UG GAS
- UG TEL
- WATER LINE
- OH ELECTRIC
- UG CABLE

- ① = MUST BE RELOCATED TO AVOID PROPOSED ARAPAHO PHASE 3 IMPROVEMENTS
- ② = MAY NEED TO BE RELOCATED TO AVOID PROPOSED ARAPAHO PHASE 3 IMPROVEMENTS. IN MOST CASES, WE ANTICIPATE THAT THE FRANCHISE UTILITIES WOULD WANT TO RELOCATE THE UTILITIES IN THIS CATEGORY TO PROVIDE WORKING ROOM FOR FUTURE MAINTAINANCE
- = UTILITY CONFLICT



THIS DOCUMENT REPRESENTS WORK-IN-PROGRESS AND IS NOT TO BE USED FOR CONSTRUCTION OR PERMITTING.  
AKC  
A. KATURA CURRY TEXAS P.E. NO. 87679

DATE: NOVEMBER 2003	SCALE: 1"=50'	JOB NO.: 02-320
DRAWN: G&A	DESIGN: AKC	REVIEWED: BRG
DWG: P-STORM		

**ARAPAHO ROAD PHASE III**

**UTILITY CONFLICTS & RELOCATION**

**TOWN OF ADDISON**

**g&a** Grantham & Associates, Inc.

1919 S. SHILOH ROAD, SUITE 310, L.B. 8 GARLAND, TEXAS 75042

(972) 864-2333 (TEL)  
(972) 864-2334 (FAX)

SHT. 2  
OF 2