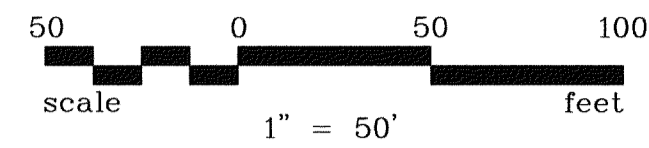
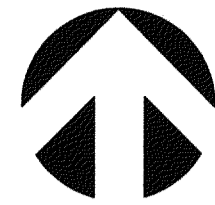


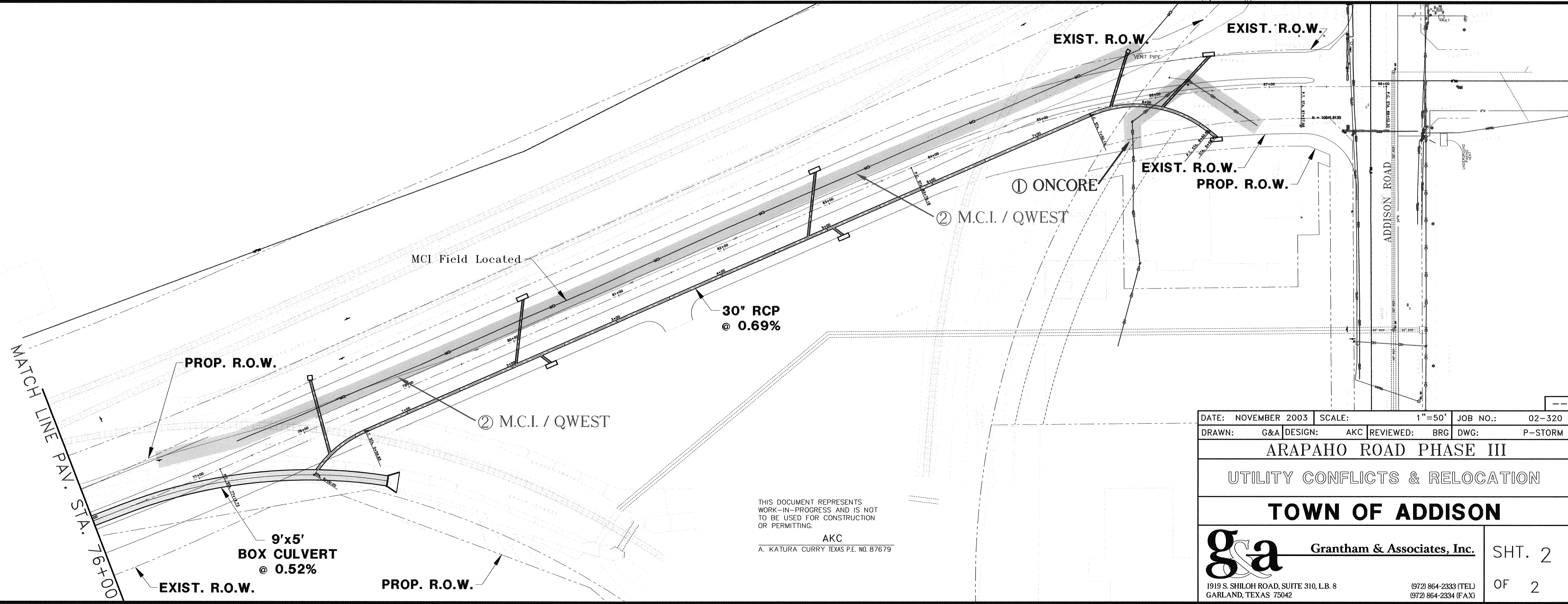
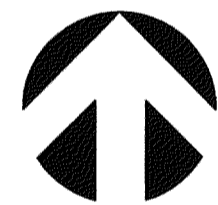
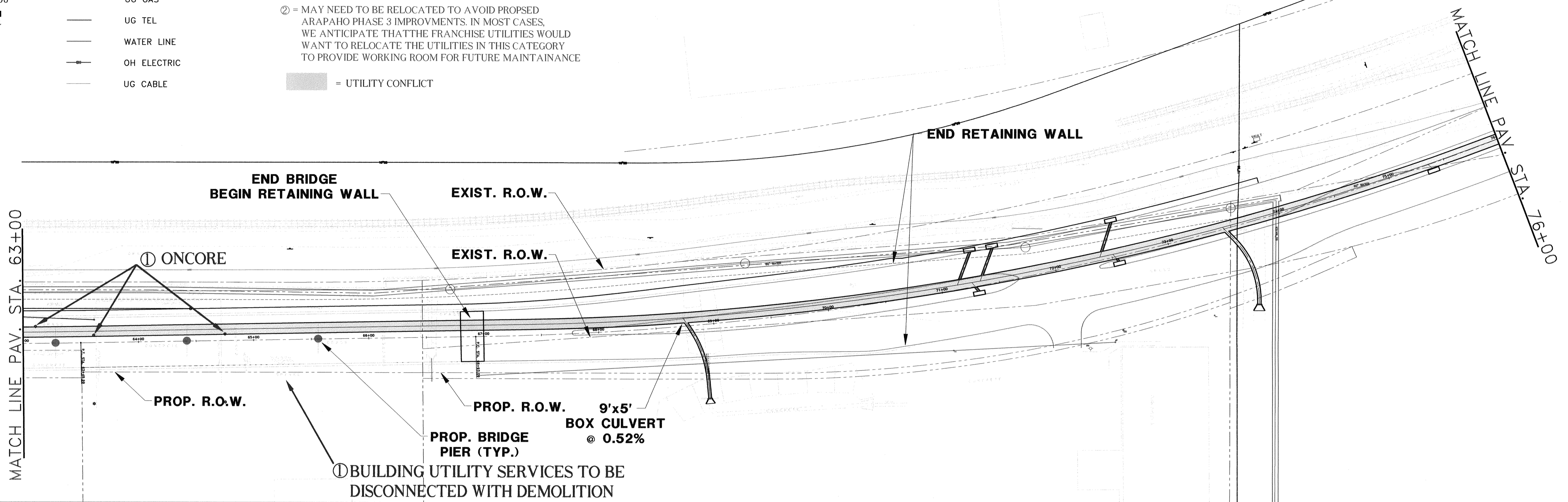
NO.	DATE	REVISION	APPROV.
1			
2			
3			



LEGEND

- SAN. SEW.
- UG GAS
- UG TEL
- WATER LINE
- OH ELECTRIC
- UG CABLE

- ① = MUST BE RELOCATED TO AVOID PROPOSED ARAPAHO PHASE 3 IMPROVEMENTS
- ② = MAY NEED TO BE RELOCATED TO AVOID PROPOSED ARAPAHO PHASE 3 IMPROVEMENTS. IN MOST CASES, WE ANTICIPATE THAT THE FRANCHISE UTILITIES WOULD WANT TO RELOCATE THE UTILITIES IN THIS CATEGORY TO PROVIDE WORKING ROOM FOR FUTURE MAINTAINANCE
- = UTILITY CONFLICT



THIS DOCUMENT REPRESENTS WORK-IN-PROGRESS AND IS NOT TO BE USED FOR CONSTRUCTION OR PERMITTING.
AKC
A. KATURA CURRY TEXAS P.E. NO. 87679

DATE: NOVEMBER 2003	SCALE: 1"=50'	JOB NO.: 02-320
DRAWN: G&A	DESIGN: AKC	REVIEWED: BRG
DWG: P-STORM		

ARAPAHO ROAD PHASE III

UTILITY CONFLICTS & RELOCATION

TOWN OF ADDISON

g&a Grantham & Associates, Inc.

1919 S. SHILOH ROAD, SUITE 310, L.B. 8 GARLAND, TEXAS 75042

(972) 864-2333 (TEL)
(972) 864-2334 (FAX)

SHT. 2
OF 2