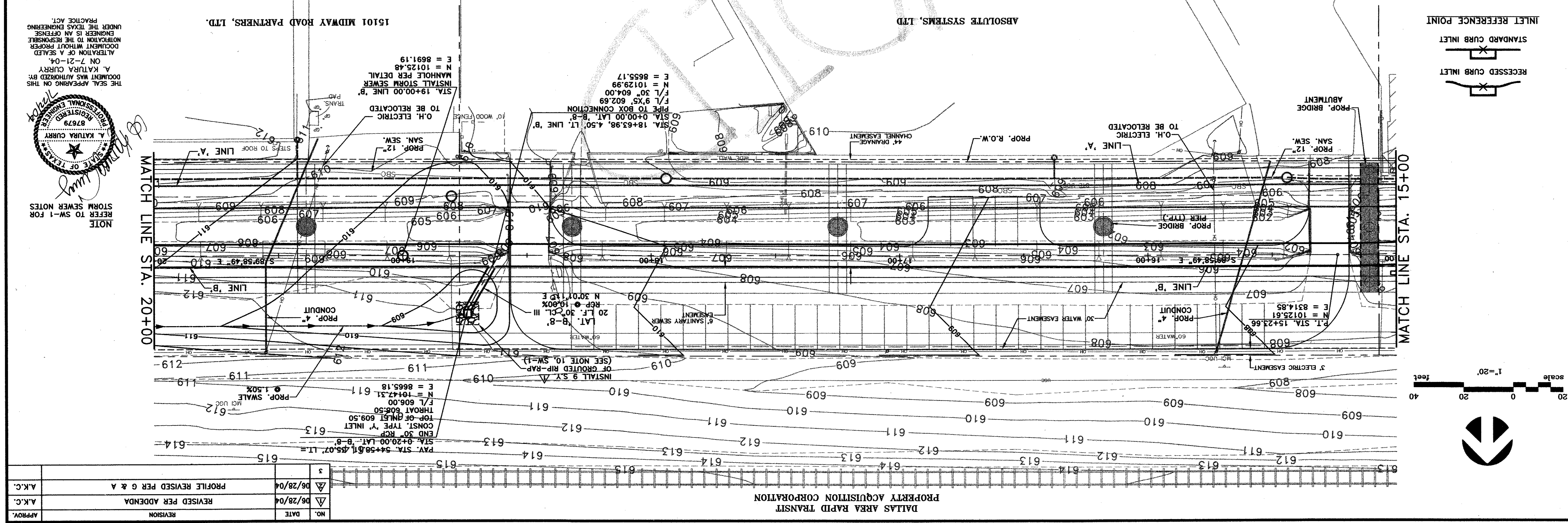
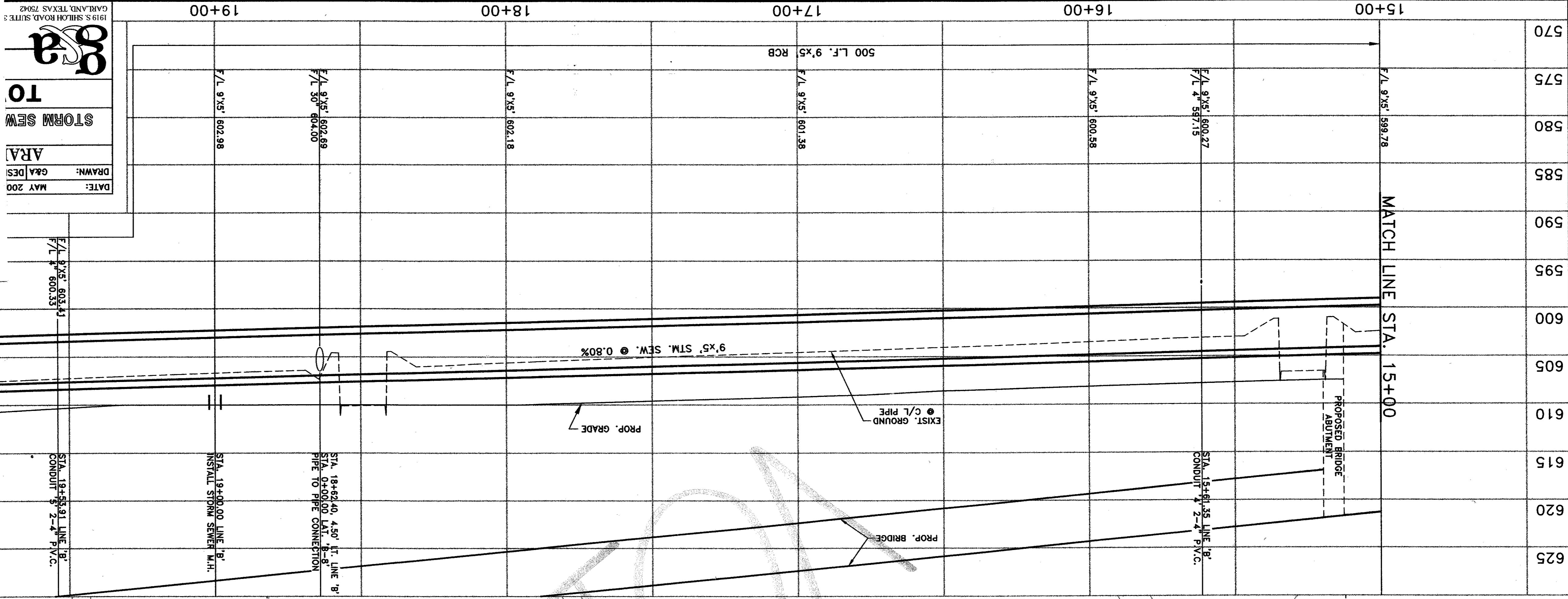


DATE: MAY 200
 DRAWN: G&A/DES
 AREA
 TO
 STORM SEW

1919 S. SHILOH ROAD, SUITE 3
 GARLAND, TEXAS 75042



ABSOLUTE SYSTEMS, LTD.
 15101 MIDWAY ROAD PARTNERS, LTD.

THE SEAL APPEARING ON THIS DOCUMENT WAS AUTHORIZED BY: *A. KATURA CURRY*
 ON 7-21-04.
 ALTERATION OF A SEALED DOCUMENT WITHOUT PROPER NOTIFICATION TO THE RESPONIBLE ENGINEER IS AN OFFENSE UNDER THE TEXAS ENGINEERING PRACTICE ACT.

NOTE
 REFER TO SW-1 FOR STORM SEWER NOTES

Professional Engineer Seal:
 STATE OF TEXAS
 A. KATURA CURRY
 87679
 REGISTERED PROFESSIONAL ENGINEER

NO.	DATE	REVISION
3	06/28/04	PROFILE REVISED PER G & A
2	06/28/04	REVISED PER ADDENDA
1		A.K.C.

APPROV.	A.K.C.